



STATE OF NORTH CAROLINA  
DEPARTMENT OF TRANSPORTATION

MICHAEL F. EASLEY  
GOVERNOR

April 05, 2004

LYNDO TIPPETT  
SECRETARY

**MEMORANDUM TO:** Mr. Benton G. Payne, PE  
Division Engineer  
Division 10

**FROM:** Forrest L. Robson, PE  
GIS Director

**SUBJECT:** Road System Changes

The Road Inventory Section has been authorized to make the following changes to the state road system as indicated below. We request that you make similar changes to the related maps and files in your Division and District offices, and install appropriate road number signs if necessary. We have updated our records and county maps accordingly. If our system changes do not conform to the actual conditions in the field, please return this memorandum with recommendations.

*89-1015-06-08*

Municipality	County	Approval Date
89080703	UNION	8/7/03

Inquires about secondary road petition changes should be referred to Ron Tucker, Secondary Roads Group Supervisor at (919) 212-6080. Inquires about TIP Project changes should be referred to Tom Schroeder, Primary Highway Group Supervisor at (919) 212-6074. If you have further questions, please contact Hardee Cox, Road Inventory Manager at (919) 212-6060. Thank you for your assistance

FLR/hrc  
enclosures ( )

- cc: BSIP
- Bridge Maintenance
- Pavement Management
- Permit Unit
- Right of Way
- Safety Management
- State Road Maintenance
- Traffic Engineering
- Traffic Surveys

MAILING ADDRESS:  
NC DEPARTMENT OF TRANSPORTATION  
GEOGRAPHIC INFORMATION SYSTEMS  
1587 MAIL SERVICE CENTER  
RALEIGH NC 27699-1587



[www.ncdot.org/statewide/planning/gis](http://www.ncdot.org/statewide/planning/gis)

DELIVERY ADDRESS:  
3401 CARL SANDBURG CT.  
RALEIGH, NC 27610  
PHONE: (919) 212-6000  
FAX: (919) 212-5999

# Road System Changes

MUNICIPALITY	COUNTY	APPROVAL DATE	NEW NUMBER	EXISTING NUMBER	STREET NAME	LENGTH (miles)	TYPE OF CHANGE	REMARKS (See Attached Map)
89080703	UNION	8/7/03		SR 1805		0.21	SYSTEM DELETION VIA MUNICIPAL AGREEMENT	MAP A, SEGMENT 0
89080703	UNION	8/7/03		SR 1625		0.35	SYSTEM DELETION VIA MUNICIPAL AGREEMENT	MAP A, SEGMENT 0
89080703	UNION	8/7/03		SR 1684		0.21	SYSTEM DELETION VIA MUNICIPAL AGREEMENT	MAP A, SEGMENT 0
89080703	UNION	8/7/03		SR 1792		0.43	SYSTEM DELETION VIA MUNICIPAL AGREEMENT	MAP A, SEGMENT 0
89080703	UNION	8/7/03		SR 1801		0.28	SYSTEM DELETION VIA MUNICIPAL AGREEMENT	MAP A, SEGMENT 0
89080703	UNION	8/7/03		SR 1804		0.74	SYSTEM DELETION VIA MUNICIPAL AGREEMENT	MAP A, SEGMENT 0
89080703	UNION	8/7/03		SR 2723		0.12	SYSTEM DELETION VIA MUNICIPAL AGREEMENT	MAP A, SEGMENT 0
89080703	UNION	8/7/03		SR 1806		0.36	SYSTEM DELETION VIA MUNICIPAL AGREEMENT	MAP A, SEGMENT 0
89080703	UNION	8/7/03		SR 2721		0.15	SYSTEM DELETION VIA MUNICIPAL AGREEMENT	MAP A, SEGMENT 0
89080703	UNION	8/7/03		SR 2722		0.40	SYSTEM DELETION VIA MUNICIPAL AGREEMENT	MAP A, SEGMENT 0
89080703	UNION	8/7/03		SR 1803		0.41	SYSTEM DELETION VIA MUNICIPAL AGREEMENT	MAP A, SEGMENT 0
89080703	UNION	8/7/03		SR 2335		0.22	SYSTEM DELETION VIA MUNICIPAL AGREEMENT	MAP B, SEGMENT 0
89080703	UNION	8/7/03		SR 2336		0.25	SYSTEM DELETION VIA MUNICIPAL AGREEMENT	MAP B, SEGMENT 0

<b>MUNICIPALITY</b>	<b>COUNTY</b>	<b>APPROVAL DATE</b>	<b>NEW NUMBER</b>	<b>EXISTING NUMBER</b>	<b>STREET NAME</b>	<b>LENGTH (miles)</b>	<b>TYPE OF CHANGE</b>	<b>REMARKS (See Attached Map)</b>
89080703	UNION	8/7/03		SR 2337		0.23	SYSTEM DELETION VIA MUNICIPAL AGREEMENT	MAP B, SEGMENT 0
89080703	UNION	8/7/03		SR 1565		0.67	SYSTEM DELETION VIA MUNICIPAL AGREEMENT	MAP B, SEGMENT 1
89080703	UNION	8/7/03		SR 1565		0.10	SYSTEM DELETION VIA MUNICIPAL AGREEMENT	MAP B, SEGMENT 2
89080703	UNION	8/7/03		SR 1565		0.20	SYSTEM DELETION VIA MUNICIPAL AGREEMENT	MAP B, SEGMENT 3

PETITION #: MunSept

CO: UNION

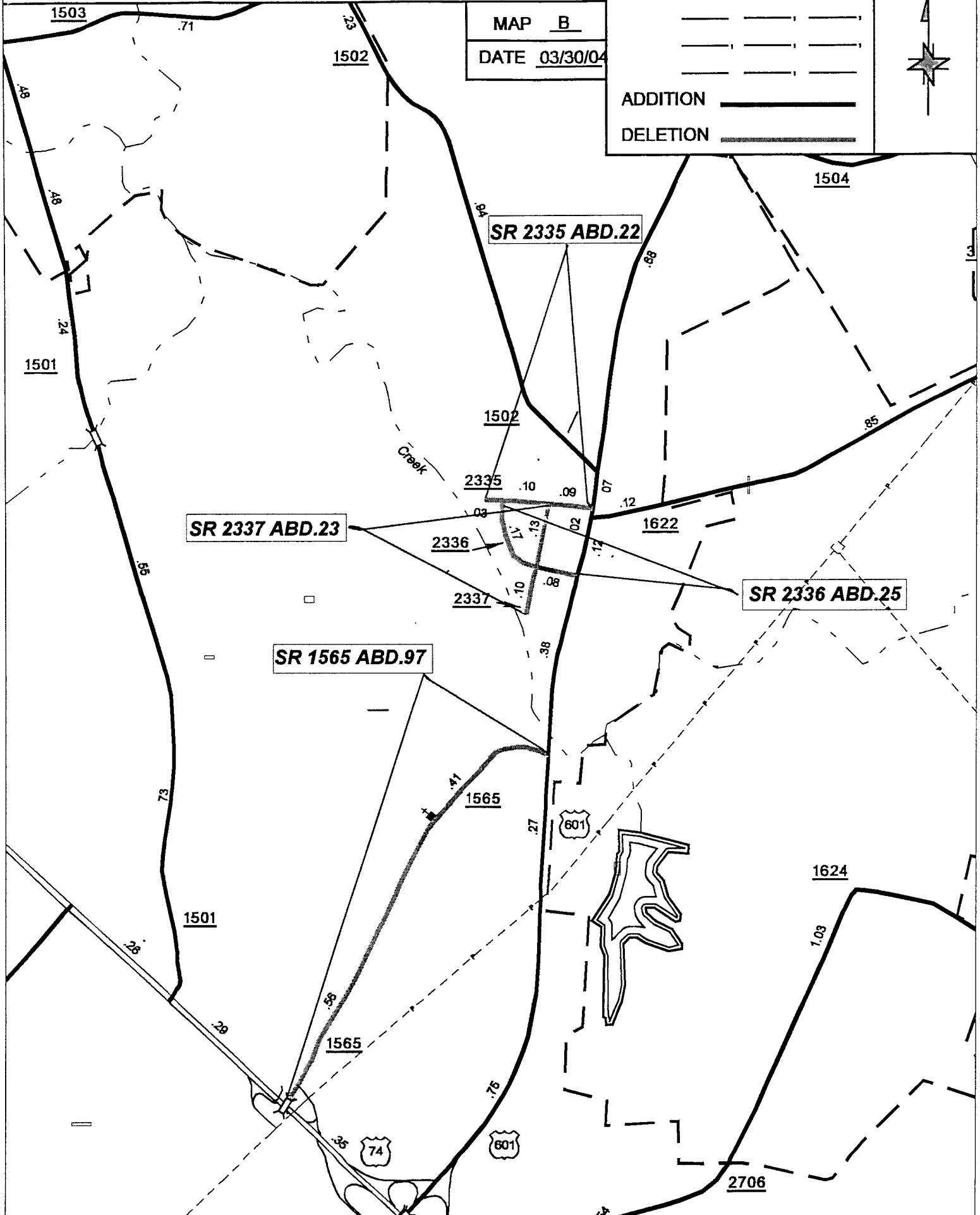
SR #: \_\_\_\_\_

MAP B

DATE 03/30/04

ADDITION 

DELETION 



SOURCE: DOQQ

SHEET: 2 OF 5

NAME: YRT

SCALE: 4:1

PETITION #. MunSept

CO: UNION

SR #: \_\_\_\_\_

MAP A

DATE 03/30/04

ADDITION \_\_\_\_\_

DELETION \_\_\_\_\_



**SR 2721 ABD.15**

2720

**SR 2722 ABD.40**

**SR 2723 ABD.12**

1504

1821

2721

2722

2723

2722

**SR1806 ABD.36**

1806

**SR 1684 ABD.21**

1621

**SR 1805 ABD.21**

1805

1804

1792

1684

**SR 1792 ABD.43**

1803

1861

1804

1006

1764

**SR 1803 ABD.41**

**SR 1801 ABD.28**

**SR 1804 ABD.74**

**SR1625 ABD.35**

SOURCE: DOQQ

SHEET: 2 OF 5

NAME: YRT

SCALE: 4:1