

RALEIGH BICYCLE ROUTES

Recreation Loop Route (Green line)
Cross Town Route (Blue line)
Limited Access Highway (Red line)
Paved Greenway (Green line)
Unpaved Greenway (Dashed green line)
Parks (Green area)
Points of Interest (Blue icon)
Bicycle Shops (Black icon)

Public Schools (Red icon)
Colleges and Universities (Red icon)
Hospitals (Red icon)
Fire Stations (Red icon)

SIGNED ROUTE DESCRIPTIONS

- ### Recreation Loop Routes
- Route 1 includes a journey along the Buckeye Greenway trail with a ride past historic Oakwood Cemetery and Lions Park. The terrain is gently sloping with some small hills. Traffic is light to moderate. However, caution should be used in crossing Raleigh Boulevard and in pedaling along Millbrook Road or Oakwood Avenue during rush hours.
 - Route 2 passes near North Hills, Optimist, and Shelley-Sertoma Parks. It is characterized by tree lined streets with rolling hills. Connections may be made with several greenway trails radiating from Shelley Lake. Caution should be used along North Hills Drive and while crossing Millbrook Road and Northbrook Drive, particularly during rush hours.
 - The two miles of bicycle lanes on Ridge Road are the backbone of Route 3 in west Raleigh. Terrain is gentle and traffic is light with only a few busy street crossings at Dixie Trail, Glen Eden Drive, and Lake Boone Trail. Opportunities abound for creating shorter personally favored rides by cycling along the many intersecting streets in this area.
 - Along Route 4 cyclists can stop at the N. C. State University Arboretum, several neighborhood parks like Kentwood, Method, and Powell Park, or they can venture onto the N. C. S. U. campus or the State Fairgrounds. Special caution is needed at the crossings of Western Boulevard and Blue Ridge Road.

- ### Cross Town Routes
- This north-south route in west Raleigh travels along Ridge Road and Gorman Street primarily. It passes the west side of N. C. State University and links Route 10 on Glen Eden Drive to Route 6 on Thistledown Drive. The streets on this route are wide, but often busy with traffic. Use caution at street crossings, particularly on Wade Avenue.
 - From east to west across the southern side of the city Route 6 connects Route 11 near Sanderford Road Park to Route 5 on Gorman Street. Carolina Pines Park is easily accessible. Cyclists will follow generally low traffic residential streets, but should use caution crossing several major streets including South Saunders Street, Wilmington Street, and Hammond Road.
 - Cyclists may use this route to cross the I-440 Beltline on Yadkin Drive between the North Hills neighborhoods and the southern half of Raleigh. Route 7 passes through N. C. State University and extends to the greenway and park attractions at Lake Johnson. Use special caution at Glenwood Avenue and through N. C. S. U. where weekday traffic is heavy.
 - Route 8 connects west Raleigh and the State Fairgrounds to the southeast by passing through Downtown. Attractions along this route include the State Capitol and City Market. Always use caution on these busy streets, but particularly at rush hours and on Hillsborough Street and Martin Luther King Jr. Boulevard. There are very few hills on this route.

- Beginning at Cedar Hills Park in north Raleigh Route 9 crosses the I-440 Beltline on Lassiter Mill Road near North Hills Mall and goes south through the Downtown business district toward Worthdale Park in the southeast. It is characterized by many busy streets. Use caution especially at the crossings on Glenwood Avenue, New Bern Avenue, and Six Forks Road.
- Route 10 is an east-west route from Kiwanis Park in east Raleigh to Laurel Hills Park at Edwards Mill Road. Cyclists may experience rolling hills on quieter residential streets. Other attractions include the All Children's Playground and Glen Eden Park.
- This north-south route along several major thoroughfares on the east side of the city connects Durant Park to Sanderford Road Park while crossing five other routes. Defensive cycling techniques should be used with additional caution during rush hours.
- Cyclists just north of I-440 may use this east-west route to go from Route 11 on Brentwood Road to the North Hills area. Use caution crossing Six Forks Road, Wake Forest Road, and Atlantic Avenue.
- Route 14 links several north Raleigh neighborhoods and shopping centers between West Millbrook Middle School and Lake Lynn Park. Cyclists will encounter narrow road shoulders on Ray Road and heavy traffic at thoroughfare crossings.

- ### PARKS, SCHOOLS AND POINTS OF INTEREST
- #### CITY PARKS
- 1 Apollo Heights
 - 2 Biltmore Hills
 - 3 Brookhaven
 - 4 Brookhaven
 - 5 Carolina Pines
 - 6 Cedar Hills
 - 7 Chavis
 - 8 Drury Hills
 - 9 Durant Nature Park
 - 10 Eastgate
 - 11 Millbrook Exchange
 - 12 Fallon
 - 13 Fred Fletcher
 - 14 Glen Eden
 - 15 Green Road
 - 16 Halifax
 - 17 Jayce Park & Daylily Garden
 - 18 Kiwanis
 - 19 Kentwood
 - 20 Lake Johnson
 - 21 Lake Johnson
 - 22 Lake Lynn
 - 23 Laurel Hills
 - 24 Lions
 - 25 Longview Pool
 - 26 Method
 - 27 Method Historic Park
 - 28 North Hills
 - 29 Oakwood
 - 30 Peach Road
 - 31 Peach Road
 - 32 Peach Road
 - 33 Pullen
 - 34 Ridge Road Pool
 - 35 Rose Garden & Little Theater
 - 36 Sanderford
 - 37 Shelley-Sertoma
 - 38 Shelley-Sertoma
 - 39 Sherwood
 - 40 Southgate
 - 41 Tarboro Road
 - 42 Tuckalee
 - 43 Williams
 - 44 Walnut Creek
 - 45 Worthdale
- (See Park Facilities Description on reverse.)

- #### PUBLIC SCHOOLS
- 1 Adams Elementary
 - 2 Athens Drive High
 - 3 Brooks Elementary
 - 4 Brooks Elementary
 - 5 Broughton High
 - 6 Cary Elementary
 - 7 Carnage Middle
 - 8 East Middle
 - 9 Conn Elementary
 - 10 Daniels Middle
 - 11 Durham Elementary
 - 12 Durant Road Elementary
 - 13 East Millbrook Middle
 - 14 Enloe High
 - 15 Fuller Elementary
 - 16 Green Elementary
 - 17 Hunter Elementary
 - 18 H. V. Stough Elementary
 - 19 Jeffreys Grove Elementary
 - 20 Joyner Elementary
 - 21 J. W. Ligon Middle
 - 22 J. Y. York Elementary
 - 23 Kenan Elementary
 - 24 Leadmine Elementary
 - 25 Longview Elementary
 - 26 Lynn Road Elementary
 - 27 Martin Middle
 - 28 Millbrook Elementary
 - 29 Millbrook High
 - 30 North Ridge Elementary
 - 31 Oak Elementary
 - 32 Phillips High
 - 33 Powell Elementary
 - 34 Powell Elementary
 - 35 Project Enlightenment
 - 36 Root Elementary
 - 37 Sanderson High
 - 38 Underwood Elementary
 - 39 Washington Elementary
 - 40 West Millbrook Middle
 - 41 Wilburn Elementary
 - 42 Wiley Elementary
 - 43 Governor Morehead

- #### COLLEGES AND UNIVERSITIES
- 1 Meredith College
 - 2 North Carolina State University
 - 3 Peace College
 - 4 Saint Augustine's College
 - 5 Saint Mary's College
 - 6 Shaw University

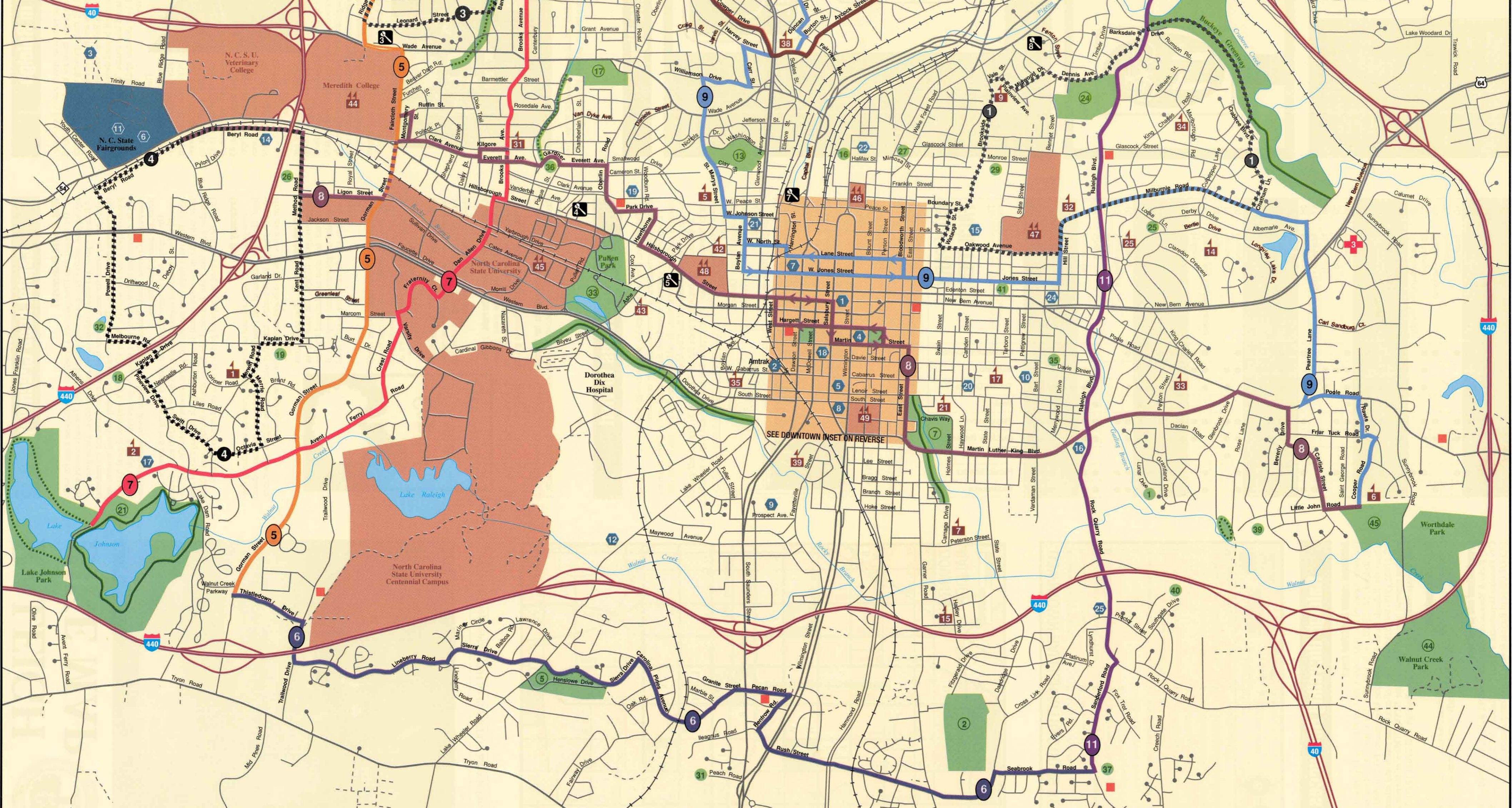
- #### POINTS OF INTEREST
- 1 State Capitol
 - 2 Amtrak Train Station
 - 3 Carter-Finley Stadium
 - 4 City Bus Station
 - 5 Civic and Convention Center
 - 6 Dorton Arena
 - 7 Greyhound Bus Terminal
 - 8 Memorial Auditorium
 - 9 Mount Hope Cemetery
 - 10 National Cemetery
 - 11 N. C. State Fairgrounds
 - 12 N. C. State Farmers Market
 - 13 N. C. Museum of Art
 - 14 N. C. S. U. Arboretum
 - 15 Oakwood Cemetery
 - 16 Martin Luther King Jr. Memorial Gardens

- #### LIBRARIES
- 17 Athens Drive
 - 18 Business & Professional
 - 19 Cameron Village
 - 20 Chavis Heights
 - 21 Glenwood Towers
 - 22 Halifax Court
 - 23 North Regional
 - 24 Richard B. Harrison
 - 25 South Raleigh

- #### HOSPITALS
- 1 Raleigh Community
 - 2 Rex
 - 3 Wake Medical Center

- #### BICYCLE SHOPS
- 1 All Star Bike Shop, Six Forks Road
 - 2 All Star Bike Shop, Quail Corners
 - 3 All Star Bike Shop, Raleigh
 - 4 Cycle Center
 - 5 Cycle Log
 - 6 Fly the Cocker, Peace Street
 - 7 Hills Incorporated

- #### FIRE STATIONS
- 1
 - 2
 - 3
 - 4
 - 5
 - 6
 - 7
 - 8
 - 9
 - 10
 - 11
 - 12
 - 13
 - 14
 - 15
 - 16
 - 17
 - 18
 - 19
 - 20
 - 21
 - 22
 - 23
 - 24
 - 25
 - 26
 - 27
 - 28
 - 29
 - 30
 - 31
 - 32
 - 33
 - 34
 - 35
 - 36
 - 37
 - 38
 - 39
 - 40
 - 41
 - 42
 - 43
 - 44
 - 45



SEE DOWNTOWN INSET ON REVERSE

