



The following route descriptions provide the information you need to help you plan your rides. Whether you're cycling for an hour, a day, or longer, each of these routes gives you a variety of places to ride and sights to see. On the road, look for signs like the one shown here that mark the routes.

**ROUTE 1: 31 MILES**

This north-south route bisects the county, connecting Level Cross, Randleman, Asheboro and Seagrove. Lightly traveled country roads take you through rolling farmlands, forests and lightly settled areas. Traveling south, the hills get steeper as you skirt the once-lofty Uwharrie Mountains. Extra caution is recommended in the Asheboro area and around the zoo, where roads are sometimes busy. Some portions of the route are remote, with no services for ten miles or more, so be sure to carry water and snacks.

There are a great variety of things to do along this route. Stop in Randleman for a refreshing break at the Deep River Park or visit the Richard Petty Museum, featuring cars and memorabilia of this icon of NASCAR racing. Asheboro, with its numerous restaurants and parks, makes an ideal lunch stop at the halfway point. The NC Zoological Park, accessed through the African Pavilion entrance along the route, will transport you to exotic animal habitats from around the globe. In Seagrove, the numerous potteries and the exhibits at the NC Pottery Center provide an overview of the pottery industry, first established in the area during the 1700s.

**ROUTE 3: 40 MILES**

Oriented from north to south, this route traverses the western portion of the county from Archdale to Seagrove and provides access to an abundance of parks and natural areas. Stop to picnic, hike or just take a break at Creekside Park in Archdale, Lake Reese mid-way along the route

and the Birkhead Mountain Wilderness in the Uwharrie National Forest. Other points of interest include the old Pisgah Covered Bridge, the NC Aviation Museum and the town of Seagrove, headquarters for the area's pottery industry.

For most of its distance, this route follows lightly traveled country roads. However, extra caution is advised at the northern end where traffic volumes are higher. You can avoid some of this traffic



by using the greenway from Creekside Park to nearby neighborhood streets as an alternative to US 311 (see Archdale inset). As you head south, these busier roads soon give way to quiet lanes through verdant farmland, ending in the lush woodlands of the Uwharrie

National Forest. The area's topography means lots of hills and curves but the vistas make it well worthwhile. This part of the county is remote with few services so plan to take water and snacks with you.

**ROUTE 5: 32 MILES**

This route across northern Randolph County connects the towns of Archdale, Level Cross, Liberty, and Staley. White-fenced farms and one-lane bridges lend charm to the up-and-down of the rolling countryside, which is graced by a myriad of wildflowers during spring and summer. Most of the route follows quiet country roads, but watch for heavier traffic in the first few miles, as you leave Creekside Park in Archdale. This route shows connections to the cross-state Mountains to Sea (Route 2) and Piedmont Spur (Route 6) and to the Alamance County bicycle route system.

**ROUTE 6: 31 MILES**

This route is a portion of the 200-mile cross-state Piedmont Spur Route, from Morganton to Snow Camp. Peaceful and rural, this section of the route curves through the eastern edge of Randolph County with its rolling hills of verdant farmland interspersed with forests. It connects Seagrove and Staley and provides access to the NC Zoological Park's African Pavilion via the intersection with Bike Route 1.

**ROUTE 7: 33 MILES**

This east-west route, which could be called the route of lakes and parks, covers the mid-section of Randolph County, passing through Asheboro, Franklinville, and Ramseur before ending in Staley. Curvy and undulating, the route passes widely spaced houses and forests interspersed with pastoral settings along fairly smooth roads.

Recreational opportunities abound along this route. Lake Reese, Lake Lucas and the Pell Recreation Facility (Ramseur Lake) all make great places to stop for a picnic or to just relax by the water. Riverside Park in Franklinville offers picnic tables on the banks of the Deep River.

**UNSIGNED CONNECTOR ROUTES**

These unsigned routes provide links between the signed routes within Randolph County as well as connections to existing routes in Moore, Alamance, Chatham, and Guilford counties. The unsigned routes can serve as shortcuts between signed routes or can link routes for additional mileage.

From its ancient mountains to its swift rivers, Randolph County melds its interesting history and current vitality to offer diverse attractions from a historic covered bridge to the North Carolina Zoological Park.

Located in the Piedmont region, Randolph County offers an abundance of peaceful roads that are great for bicycling. Glide through the quiet countryside of undulating farmland, rest in shaded parks, and stop for refreshments at one of many country stores. Explore the friendly towns and busy Asheboro, with its many restaurant choices. The county's many lakes and parks provide a tranquil respite from pedaling. For more physical challenges, try the routes in the southwestern section where the slopes of the ancient Uwharrie Mountains can still intimidate, even if their altitude is less than it once was. These remote areas mean less traffic but also fewer services, so plan to carry snacks and water with you.



This map shows a 255-mile system of routes that can be combined for innumerable touring options. The Randolph County system includes five signed routes (Routes 1, 3, 5, 6, and 7) covering 167 miles, through most parts of the county. Route 6 across the southern part of the county is a segment of the cross-state Piedmont Spur Bicycling Highways Route. The northern routes include 33 miles of the High Point Area Bicycle Routes 4, 6, and 8 that dip into Randolph County. Unsigned connector routes, totaling 55 miles, link signed routes within the county and also connect to bike routes in Moore, Chatham, Guilford and Alamance counties.

The friendly people, beautiful vistas and miles of smooth roads make bicycling in Randolph County well worth the effort.

In North Carolina, the bicycle has the legal status of a vehicle. This means that bicyclists have full rights and responsibilities on the roadway and are subject to the regulations governing the operation of a motor vehicle. Under North Carolina law, bicyclists are required to:

- Ride on the right in the same direction as other traffic
- Obey all traffic signs and signals
- Use hand signals to communicate intended movements
- Equip bicycle for night riding with a front lamp visible from 300 feet and a rear reflector that is visible from a distance of 200 feet.

In addition, cyclists under the age of 16 are required by North Carolina law to wear an approved bicycle helmet.

**Safety Tips**

- Ride defensively and in a predictable manner
- Wear a bicycle helmet every time you ride your bike
- Avoid riding at night, if possible.
- When riding in a group, ride single file
- Wear bright-colored clothes to increase your visibility
- Be courteous to other drivers
- Keep traffic flowing by helping motorists pass safely

**Resources**

- Asheboro-Randolph Chamber of Commerce**  
317 E. Dixie Drive  
Asheboro, NC 27203  
Phone: 336.626.2626  
Fax: 336.626.7077  
Email: chamber@asheboro.com  
Website: http://chamber.asheboro.com
- North Carolina Zoological Park**  
4401 Zoo Parkway  
Asheboro, NC 27203  
Phone: 800.488.0444  
Website: www.nczoo.org
- Uwharrie National Forest**  
Uwharrie Ranger District  
789 NC Hwy. 2A/27 East  
Troy, NC 27171-9332  
Phone: 910.576.6391  
Website: www.cs.unca.edu/nfnc/recreation/uwharrie
- Randolph County Tourism Development Authority**  
P.O. Box 4774  
Asheboro, NC 27204  
Phone: 336.626.0364 or 800.626.2672  
Fax: 336.626.0977  
Email: tourism@VisitRandolph.org  
Website: www.VisitRandolph.org
- Division of Bicycle and Pedestrian Transportation**  
1552 Mail Service Center  
Raleigh, NC 27699-1552  
Phone: 919.733.2804  
Fax: 919.715.4422  
Email: bikeped.transportation@dot.state.nc.us  
Visit the Division's website www.ncdot.gov/tourism/bicycle for maps of cross-state, regional, and local bicycle routes, additional information on laws and safety tips, a calendar of bicycle events, and listings of North Carolina bicycle shops and clubs.
- Asheboro Parks & Recreation Department**  
123-B Davis Street  
P.O. Box 1106  
Asheboro, NC 27204-1106  
Phone: 336.626.1240  
Email: aoliver@ci.asheboro.nc.us  
Website: www.ci.asheboro.nc.us

This map was produced in conjunction with the Asheboro-Randolph County Chamber of Commerce. Funding for this enhancement project was provided through the NC DOT Transportation Improvement Program. 10,000 copies of the map were printed on recycled paper at \$45 a copy and are distributed free of charge. Published January, 2003.



North Carolina Department of Transportation  
Division of Bicycle and Pedestrian Transportation

Welcome to Randolph County

Randolph County straddles the Uwharrie and Deep river drainage basins in the heart of North Carolina where the Catawba Indians held sway before European settlers appeared. The county was named in honor of Peyton Randolph of Virginia, the first president of the Continental Congress. Predominately settled in the eighteenth century by Quakers, the county has always followed a different path from the southern mainstream. Its inhabitants launched the anti-tax War of the Regulation in 1770 and endured a fratricidal internal war between Whigs and Tories during the Revolution.

The staunch abolitionist views of the Society of Friends resulted in the direct involvement of its members in the Underground Railroad. During the 1830s when cotton agriculture was king, local residents were some of the first in the state to create industrial production in local textile mills. The Civil War saw the county under martial law as state troops tried to preserve law and order in the face of anti-Confederate activism, draft resisters and roving bands of anti-government guerrillas.

Textile mills are no longer the industrial backbone of the county, having yielded their place to wood-working operations, which have evolved from traditional chair and porch rocker factories to modern manufacturing giants. However, despite the county's pioneer role in industrialization, it has retained a strong foothold in agriculture. More than 1,300 Randolph County farms generate more than \$200 million in annual agricultural income. It is the number one county in North Carolina for both dairy and beef cattle operations. Specialty niches have been created by smaller scale "agri-tourism" businesses such as the Goat Lady Dairy, which produces some 7,500 pounds of cheese each year, and Rising Meadow Farms Bed and Breakfast Inn, which produces wool and mutton.



Pottery photos courtesy of the Division of Tourism, Film and Sports Development.

Points of Interest

**NORTH CAROLINA ZOOLOGICAL PARK**

When you visit the North Carolina Zoological Park, you'll feel as though you've stepped onto another continent. The zoo's 500 acres provide native-like habitats for animals from North America and Africa in the largest natural habitat zoo in the world. The county's premier tourist attraction, it draws about 800,000 visitors each year. The North American side of the facility is home to seals and polar bears, bison and elk as well as the indoor Streamside and Sonora Desert pavilions. The zoo's African habitats feature nine large outdoor exhibits for zebras, ostriches, baboons, elephants, gorillas, giraffes and rhinoceros. The luxuriant vegetation of the Forest Aviary offers ample perches for the brilliantly colored tropical birds that call this home. Let your imagination run wild at the zoo. The zoo is open year round, closing only for Christmas Day and occasional severe weather days. Admission is charged. www.nczoo.org. or 800.488.0444



**NORTH CAROLINA AVIATION MUSEUM**

Established in 1996, this museum and aircraft conservation workshop will take you back to another era. The museum, housed in a large hangar, includes numerous examples of America's greatest warplanes from WWII through Vietnam, many of which are still flyable. Around the perimeter of the hangar, you will find one of the most extensive collections of authentic military uniforms and memorabilia in the southeastern United States. An on-site gift shop offers aviation t-shirts and model planes. Admission is charged. While the museum is generally open 7 days a week, it may be closed on weekends from April through October because the aircraft are participating in air shows. 336.625.0170.

**NORTH CAROLINA POTTERY CENTER**

North Carolina's pottery tradition dates to prehistoric times when Native Americans used the region's abundant clay for a variety of household goods. Situated in Seagrove, one of the oldest and largest communities of working potters in the country, The Pottery Center houses a permanent collection of over 200 pieces of pottery, artifacts, and photographs that interpret this unique cultural resource. Changing exhibits display contemporary work by the state's potters as well as information on historic traditions. Display and information services help visitors find their way to the many different potteries in the area. Admission is charged. www.ncpotterycenter.com or 336.873.8430.

**RICHARD PETTY MUSEUM**

This official museum and racing headquarters are a testament to Randolph County native Richard Petty, called the "King" of NASCAR auto racing. The museum displays videos that highlight Petty's racing career and showcases exhibits of his race cars, trophies and awards, mementos, and other racing items. The museum is open year round, Monday through Saturday. Admission is charged. 336.495.1143.

**PISGAH COVERED BRIDGE**

One of the few remaining covered bridges in North Carolina, the Pisgah Covered Bridge now serves only foot traffic since the roadway has been re-routed around it. Its sturdy wooden timbers are reminiscent of days when horses and buggies were the preferred mode of transportation. The bridge nestles in a wooded area with picnic tables and an inviting loop trail for hiking along the creek banks.



**DEEP RIVER NATURE TRAIL**

Located off Main Street in Randleman, this hard-packed trail (one-third of a mile) starts in a park area next to the Deep River. The nicely shaded park, open from 6:00 AM until 10:00 PM, offers picnic tables and grills. Bicycles are allowed on the trail and fishing is permitted in the park. Camping and swimming are not permitted.

**LAKE REESE AND LAKE LUCAS**

Operated and administered by Asheboro Parks & Recreation Department, these long and narrow lakes, the banks of which are mostly wooded, are open to the public from 6:30 AM until dusk on most days. Lake Reese is closed on Tuesdays from March 15-November 15 and closed on Monday and Tuesday November 16-March 14. Lake Lucas is closed on Wednesdays from March 15-November 15 and on Wednesdays and Thursdays November 16-March 14. The facilities at both lakes include restrooms, picnic areas and grills. Drinks and concessions are available at the park office. Swimming is not permitted. For more information, access the Parks and Recreation web site at www.ci.asheboro.nc.us.



**UWHARRIE NATIONAL FOREST**

This large recreation area in southwestern Randolph County encompasses much of the Uwharrie Mountains, remnants of an ancient chain of island volcanoes that were active some 600 million years ago. The derivation of the name Uwharrie has been lost although some attribute it to an old Indian term for "rocky soil." Located at the edge of an ancient ocean that no longer exists, these peaks — according to some

evidence — once exceeded 10,000 feet in elevation, making them one of the oldest mountain ranges in the world. A few remaining peaks — all under 1,000 feet — remind us of their former grandeur. Covered with

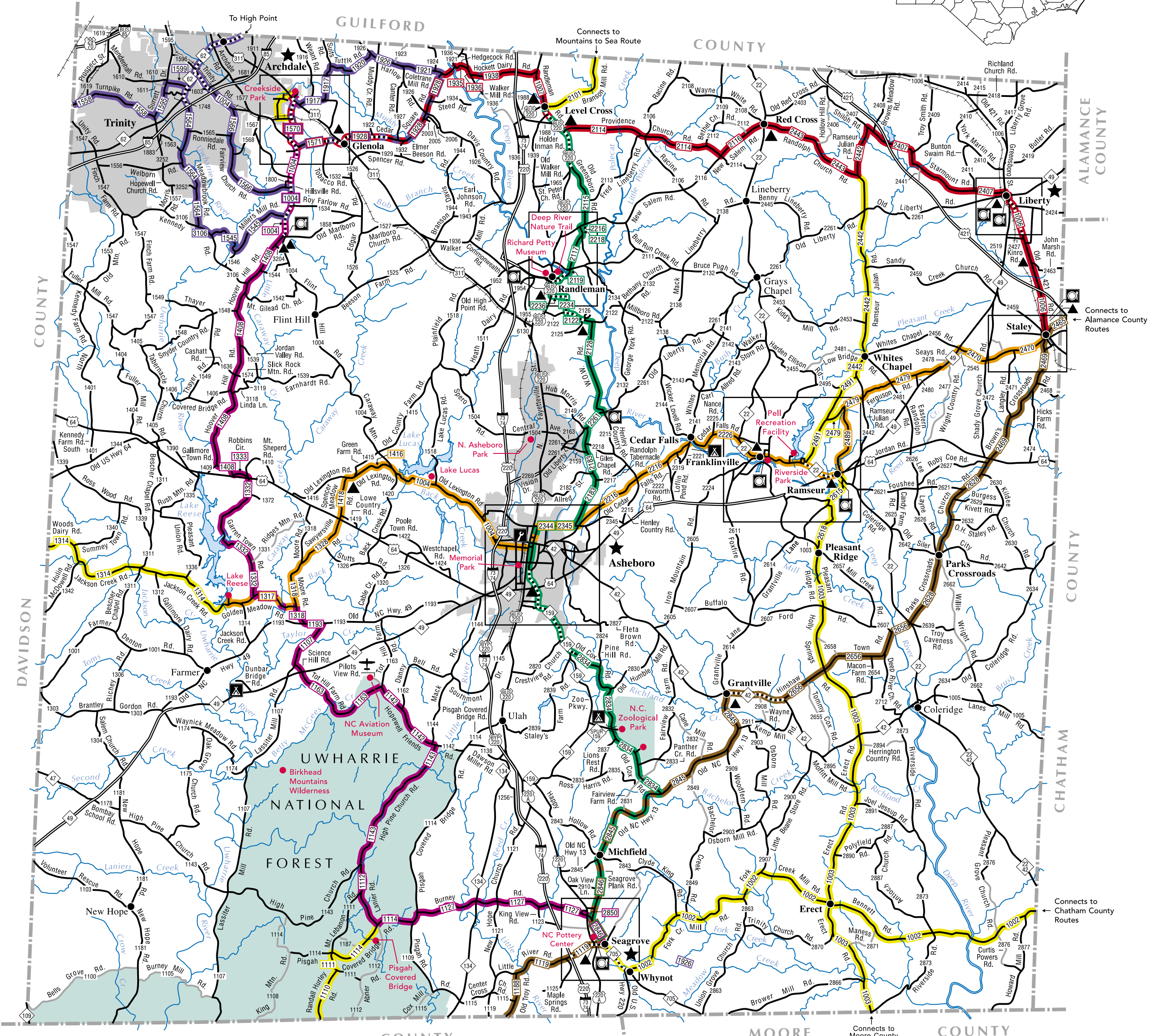
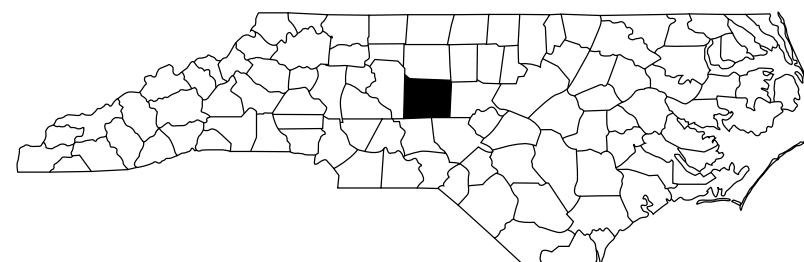
rhyolite, an extremely hard and smooth volcanic product, these mountains proved an abundant source of stone for arrowheads and tools for Native Americans who inhabited this region from 12,000 BC. Some of the oldest Indian artifacts on the East Coast have been recovered here, yet few tribes remained in the area when the European settlers arrived.

The Birkhead Mountain Wilderness within the national forest offers hikers a naturally beautiful retreat from civilization with a few remnants of long-gone Indian and pioneer settlements. The 13 miles of interconnected trails can be reached from two main trailheads located off Lassiter Mill Road. While these trails are not long, they offer surprising climbs in places. Highlights along the trails include the Rush Gold Mine and an old rock chimney at the former Bingham home place. Other numerous homesteads and Indian camps have long since been reclaimed by the majestic forests.

**PELL RECREATION FACILITY**

The central feature of this park is the long, narrow lake, which serves as a public water supply for Ramseur and the surrounding area. Open dawn to dusk, Tuesday through Saturday, the facility offers picnic tables and grills, restrooms, a playground, volleyball nets, a boat launch, and boat and equipment rentals. Swimming and bank fishing are not allowed. A second entrance off Ramseur Lake Road leads to the First Aid station. The facility is administered by the Ramseur Parks & Recreation Department.

# Bicycling Randolph County



## About the Map

Whether you wish to take a short ride, an all-day trip or a longer overnight tour, the resources you need to plan your ride are all here. A 255-mile system of bicycle routes is highlighted on the map: five signed routes totaling 167 miles, an additional 55 miles of unsigned connector routes and 33 miles of the High Point Area Bicycle Routes that dip into Randolph County. By combining various portions of these routes, endless trip options are possible.

In addition to showing the bike routes, the map includes a wealth of other information. The locations of all services such as country stores, campgrounds, and restaurants are pinpointed with symbols, as shown in the legend. Campgrounds make good base camps and provide opportunities for multi-day travel over various parts of the route system. Towns that provide overnight accommodations, restaurants and other amenities are marked with a star. Points of interest are marked with a large dot.

Names are shown for all roads that are part of the route system or which cross a route. Busier sections of the routes, where extra caution is recommended, are clearly marked. On the road, these areas are posted with "Share the Road" signs, like the one shown below.

Enlarged inset maps of Asheboro, Archdale, Staley, Liberty, Seagrove, Randleman and Franklinville/Ramseur are included to help you navigate these areas and locate points of interest.

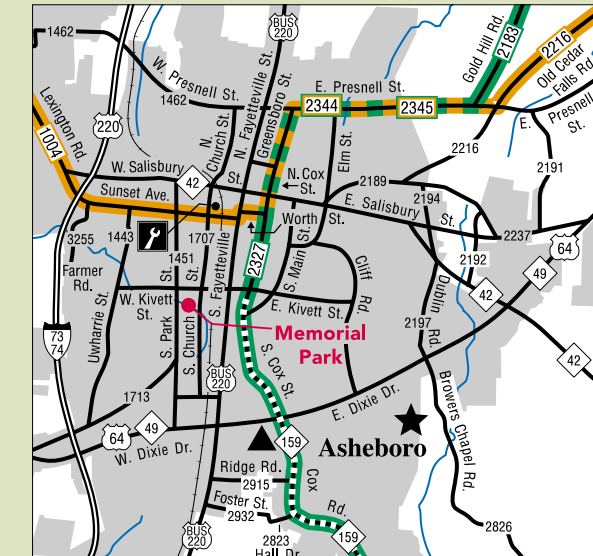
Have a safe and enjoyable ride. Please remember to be courteous to other road users.



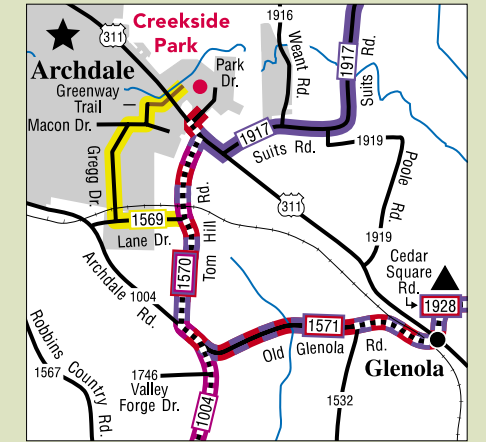
## A Note of Caution

The highlighted bicycle routes shown on this map follow roads of the North Carolina highway system and local streets. These roads do not include any special accommodations for bicycles, such as paved shoulders or bike lanes. Care has been taken to select more lightly traveled roads. In a few places, however, short segments of more heavily traveled roads are used to make connections where no other options exist. These areas are marked with "Share the Road" signs to alert motorists to the presence of cyclists. The Randolph County bike routes are not designed to be used by children, as their ability to judge traffic conditions and driver actions is not well developed.

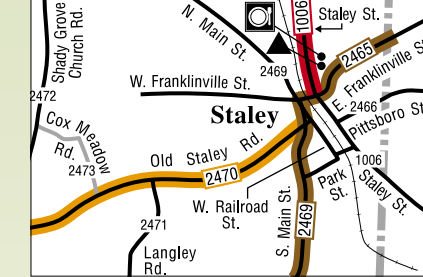
### Asheboro



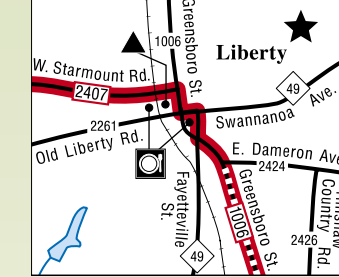
### Archdale



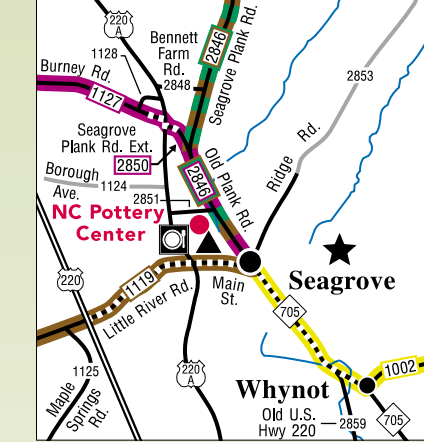
### Staley



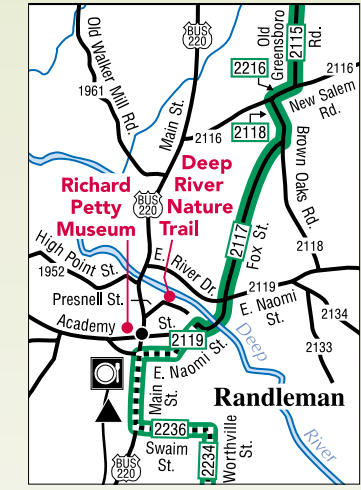
### Liberty



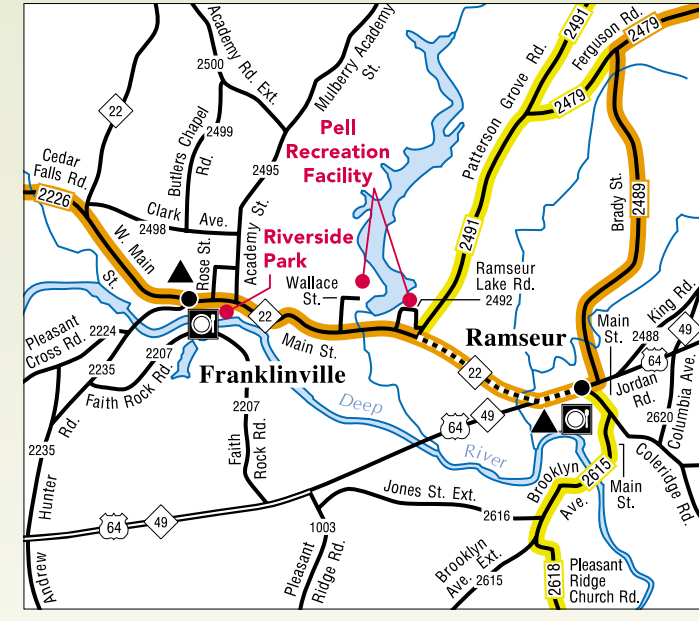
### Seagrove



### Randleman



### Franklinville/Ramseur



### Legend

Route 1 - Level Cross, Randleman, Asheboro, Zoo, Seagrove	Unsigned Connectors	Country Stores
Route 3 - Archdale to Seagrove	High Traffic Areas	Full Service Areas
Route 5 - Staley, Liberty, Level Cross, Archdale	Divided Highways	Campgrounds
Route 6 - Segment of Piedmont Spur	Paved Roads	Restaurants
Route 7 - Staley, Ramseur, Franklinville, Asheboro, W. Randolph Co.	Dirt Roads	Bicycle Shops
Route 4,6,8 - High Point Area Routes	Railroads	Points of Interest
	Creeks and Rivers	Airport

SCALE 1 0 1 2 3 4 MILES

### Milage Between Points

Archdale	Asheboro	Franklinville	Lake Reese	Level Cross	Liberty	NC Zoo	Ramseur	Seagrove	Staley	Randleman
26	31	17	13	21	10	16	22	25	31	23
8	31	23	15	36	21	34	8	16	21	34
21	10	16	22	25	31	30	11	3	24	21
10	16	22	25	31	36	21	13	15	30	11
16	22	25	31	36	21	34	8	16	21	34
25	31	23	15	36	21	34	8	16	21	34
25	31	23	15	36	21	34	8	16	21	34
25	31	23	15	36	21	34	8	16	21	34
25	31	23	15	36	21	34	8	16	21	34
25	31	23	15	36	21	34	8	16	21	34
25	31	23	15	36	21	34	8	16	21	34

Distances shown are measured along highlighted routes and may not be the shortest or the most direct way between points.

