

# ORANGE COUNTY BICYCLING MAP



**A NOTE OF CAUTION** The highlighted routes on this map follow roads that are paved shoulders, local streets, and, in a few cases, paved greenways. Most of these roads do not include any special accommodations for bicycles, such as paved shoulders or bike lanes. Care has been taken to select more lightly traveled roads. In a few places, however, the routes use short segments of more heavily traveled roads to make connections where no alternative exists. These areas are marked with "Share the Road" signs to alert motorists to the possible presence of bicyclists on the road. Some roads also carry higher volumes of traffic during commute times. The Orange County bicycle routes are not designed to be used by children because their ability to judge traffic conditions and driver actions is not sufficiently developed.



### LEGEND

- Perimeter Route
- Segment of Mountains-to-Sea Bicycle Route
- East-West Route
- North-South Route
- Alamance County Bicycle Route
- Divided Highways
- Primary Roads
- Paved Secondary Roads
- Unpaved Roads
- Railroads
- Creeks and Rivers
- Full-Service Areas
- Campgrounds
- Convenience Stores
- Bicycle Shops
- Points of Interest
- Airport
- Greenway Trails
- Unsigned Connector Routes
- Higher Traffic Areas

### SCALE



### ABOUT THE MAP

Whether you wish to take a short ride, an all-day trip or a longer overnight tour, all the information you need to plan your ride is on this map. The 206-mile system of Orange County bicycle routes, highlighted on the map in different colors, consists of four signed routes totaling 158 miles and an additional 48 miles of unsigned connector routes. By combining these routes in different ways, you can create a variety of trip options.

In addition to showing the bike routes, this map includes a wealth of other information. The locations of all services such as convenience stores, campgrounds, restaurants are pinpointed with symbols, as shown in the legend. Towns that provide overnight accommodations, restaurants and other amenities are marked with a star. Points of interest are marked with a red dot. The names of all roads that are part of the route system or which cross a route are shown. Busier sections of the routes, where extra caution is recommended, are clearly indicated. On the road, "Share the Road" signs posted on these portions of the routes remind motorists and bicyclists to remain alert.

Enlarged maps of Chapel Hill/Carrboro, Hillsborough, Mebane and Efland provide greater detail to help you navigate these areas and locate points of interest.

### BICYCLE LAWS

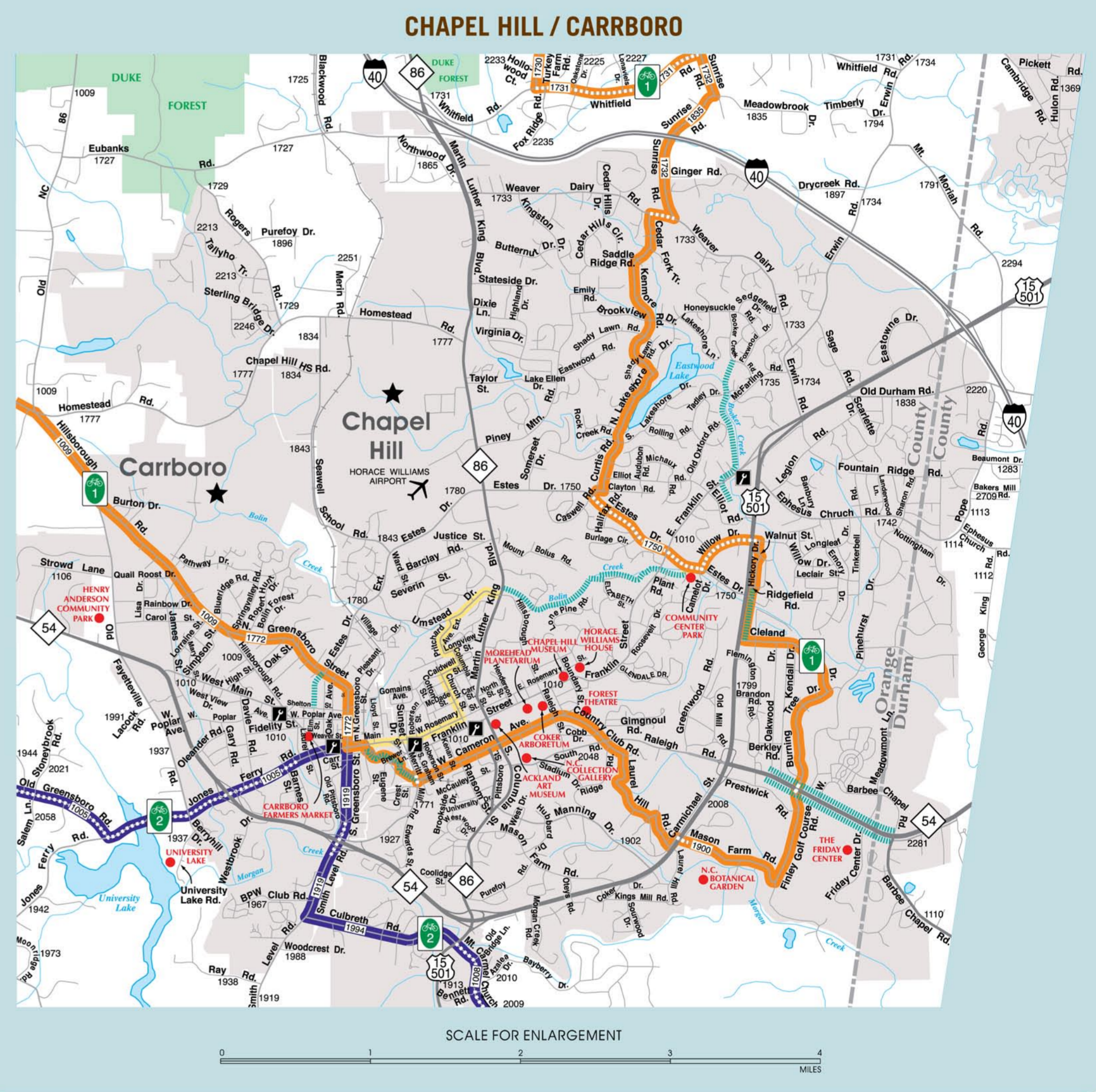
In North Carolina, the bicycle has the legal status of a vehicle. This means that bicyclists have full rights and responsibilities on the roadway and are subject to the same regulations governing the operation of a motor vehicle. Under North Carolina law, bicyclists are required to:

- Ride on the right in the same direction as other traffic.
- Obey all traffic signs and signals.
- Use hand signals to communicate intended movements.
- Equip each bicycle for night riding with a front lamp visible from 300 feet and a rear reflector that is visible from a distance of 200 feet.

In addition, cyclists under the age of 16 are required by North Carolina law to wear a bicycle helmet approved by the US Consumer Product Safety Commission.

### SAFETY TIPS

- Ride defensively and in a predictable manner.
- Wear a bicycle helmet every time you ride your bike.
- Avoid riding at night, if possible.
- Wear bright-colored clothes to increase your visibility.
- Be courteous to other road users.
- Keep traffic flowing by helping motorists pass safely.



### CHAPEL HILL / CARRBORO

### SCALE FOR ENLARGEMENT



### HILLSBOROUGH

### SCALE FOR ENLARGEMENT



### EFLAND

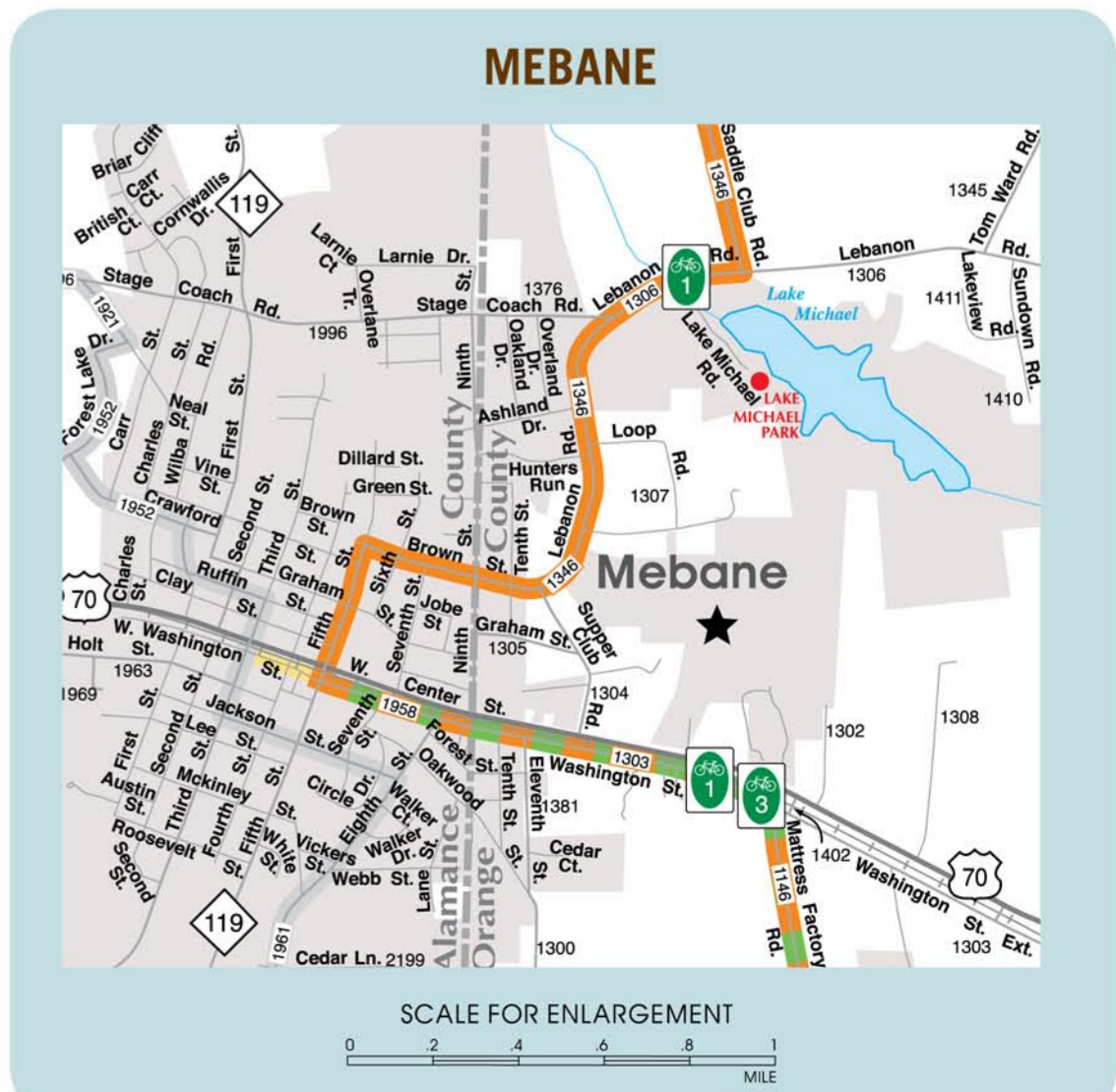
### SCALE FOR ENLARGEMENT



### MILEAGE BETWEEN POINTS

Distances shown are measured along highlighted routes and may not be the shortest or the most direct way between points.

|                            | CHAPEL HILL | CARRBORO | MEBANE | EFLAND | HILLSBOROUGH | LITTLE RIVER REGIONAL PARK | END RIVER STATE PARK |
|----------------------------|-------------|----------|--------|--------|--------------|----------------------------|----------------------|
| CHAPEL HILL                |             |          |        |        |              |                            |                      |
| CARRBORO                   | 1.2         |          |        |        |              |                            |                      |
| MEBANE                     | 25.9        | 24.8     |        |        |              |                            |                      |
| EFLAND                     | 19.7        | 18.6     | 6.5    |        |              |                            |                      |
| HILLSBOROUGH               | 19.2        | 18.1     | 11.1   | 4.6    |              |                            |                      |
| LITTLE RIVER REGIONAL PARK | 29.5        | 30       | 22.9   | 16.5   | 11.9         |                            |                      |
| END RIVER STATE PARK       | 20.3        | 21.4     | 27.8   | 21.3   | 16.7         | 9.4                        |                      |



### MEBANE

### SCALE FOR ENLARGEMENT

