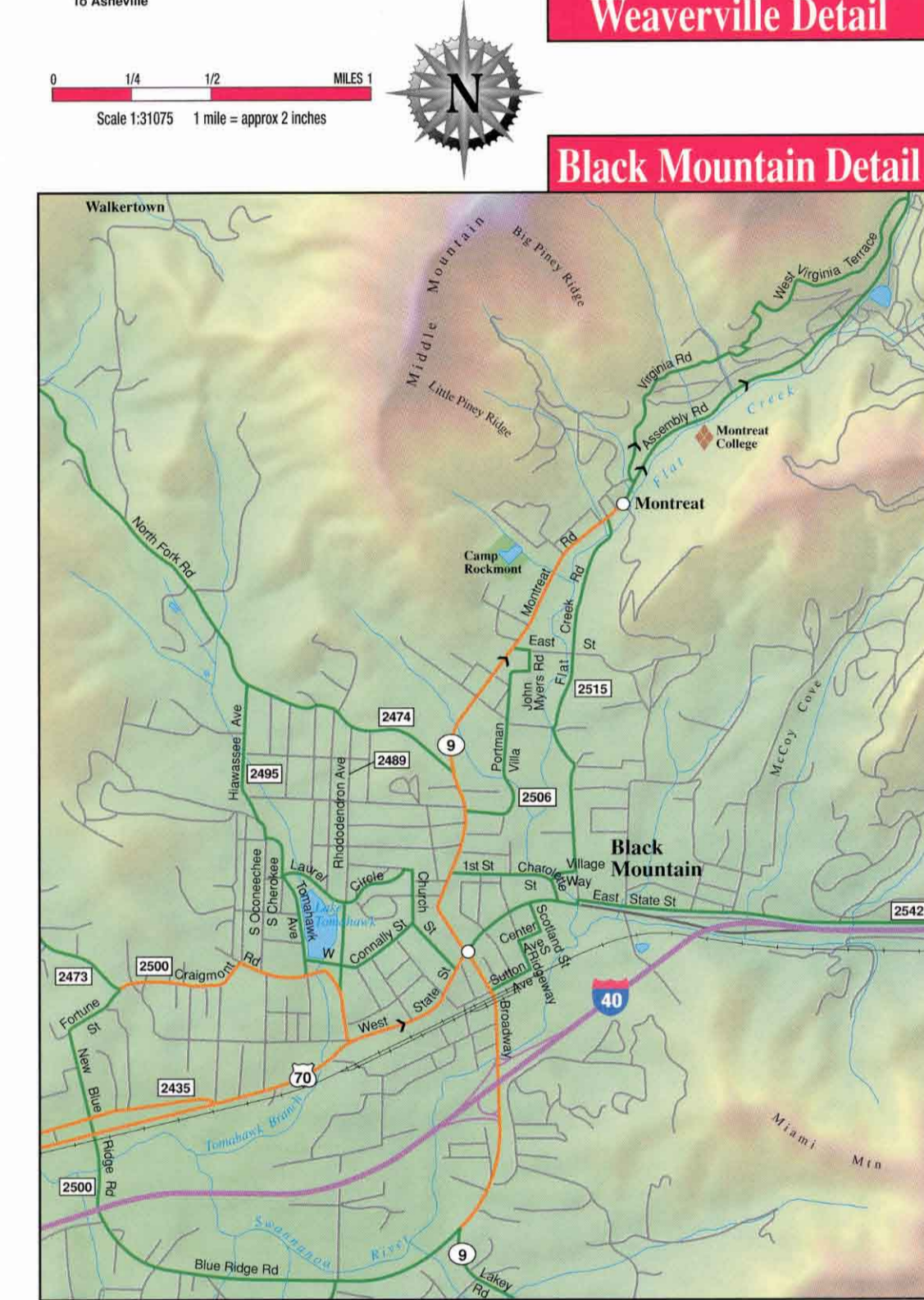
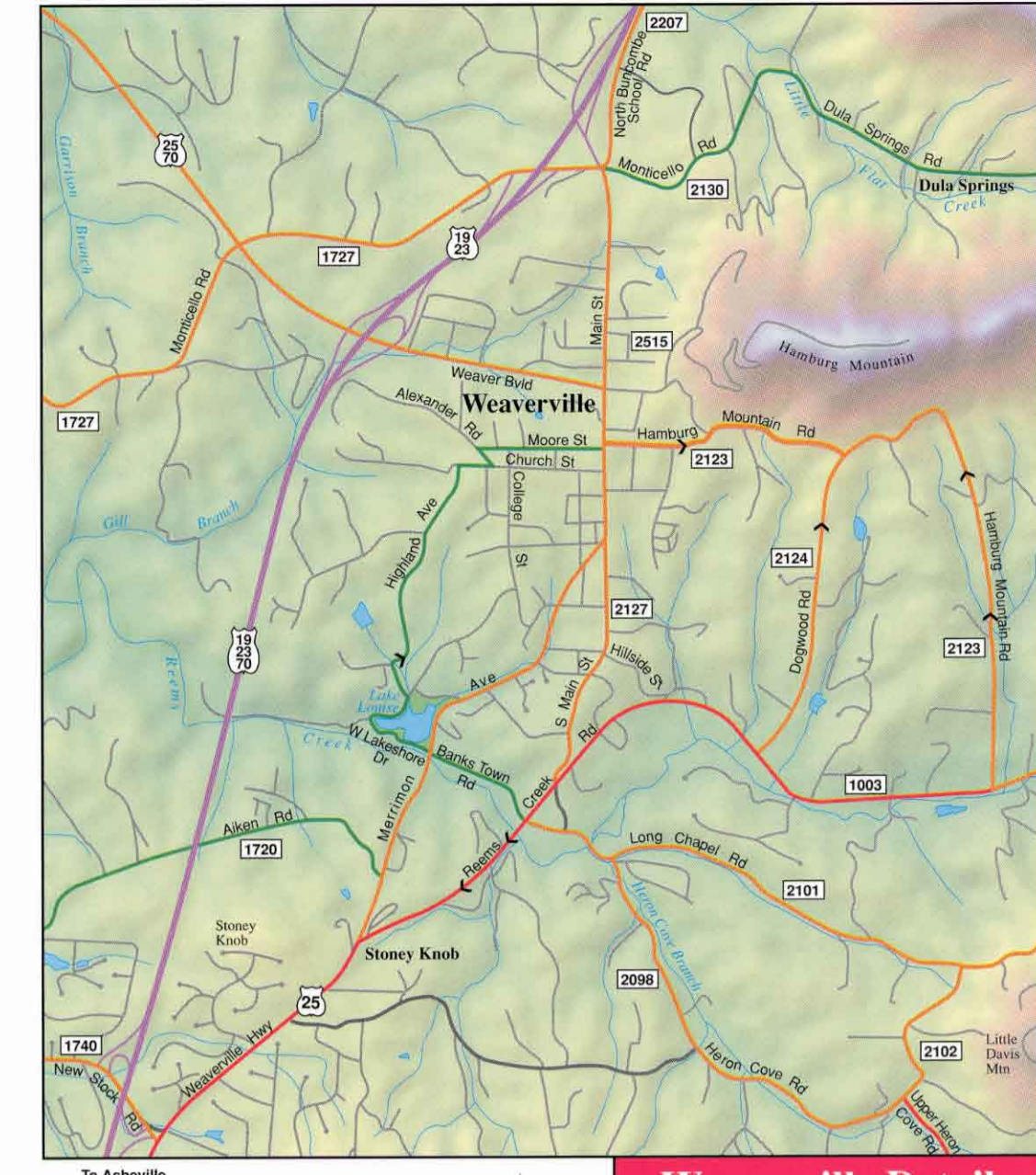
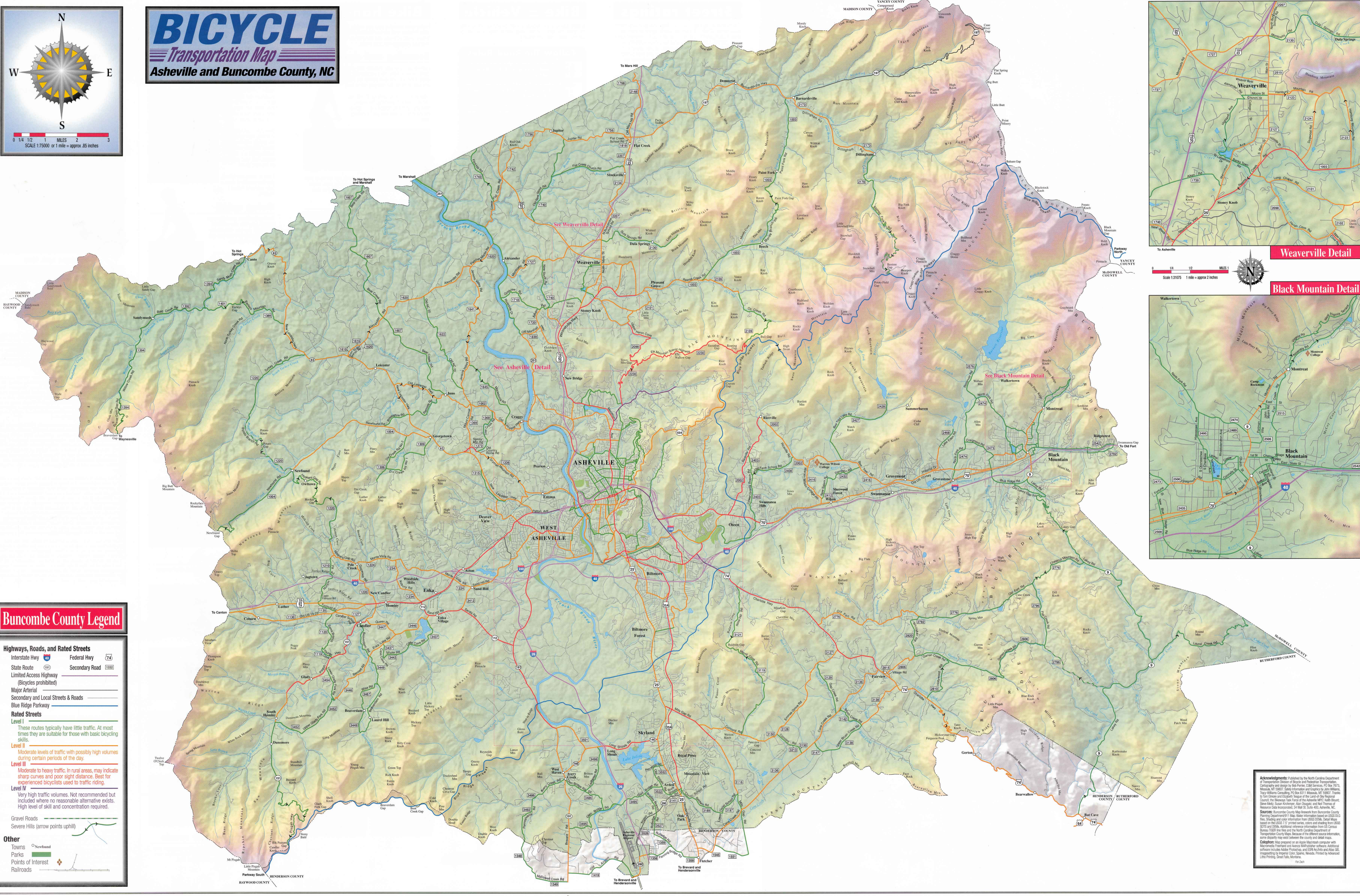


BICYCLE Transportation Map

Asheville and Buncombe County, NC



Buncombe County Legend

- Highways, Roads, and Rated Streets**
- Interstate Hwy
- Federal Hwy
- State Route
- Limited Access Highway (Bicycles prohibited)
- Major Arterial
- Secondary and Local Streets & Roads
- Blue Ridge Parkway
- Rated Streets**
- Level I**
These routes typically have little traffic. At most times they are suitable for those with basic bicycling skills.
- Level II**
Moderate levels of traffic with possibly high volumes during certain periods of the day.
- Level III**
Moderate to heavy traffic. In rural areas, may indicate sharp curves and poor sight distance. Best for experienced bicyclists used to traffic riding.
- Level IV**
Very high traffic volumes. Not recommended but included where no reasonable alternative exists. High level of skill and concentration required.
- Gravel Roads
- Severe Hills (arrow points uphill)
- Other**
- Towns
- Newfound
- Parks
- Points of Interest
- Railroads

Acknowledgments: Published by the North Carolina Department of Transportation, Division of Bicycle and Pedestrian Transportation. Cartography and design by Bob Peticola, C&G Software, PO Box 70712, Mechanicsville, VA 22687. Safety information and graphics by John Williams, Tracy Williams Consulting, PO Box 8171 Mechanicsville, VA 22687. Thanks to Tom Evans and Elizabeth Torgler of the Land of Sky Regional Council, the Buncombe State Fair, the Asheville Mountain Park, the Stone Mountain, Susan Kistner, Alan Douglas, and Neil Thomas of the Buncombe State Fair, the Asheville Mountain Park, the Stone Mountain, Susan Kistner, Alan Douglas, and Neil Thomas of the Buncombe State Fair, the Asheville Mountain Park, the Stone Mountain, Susan Kistner, Alan Douglas, and Neil Thomas of the Buncombe State Fair, the Asheville Mountain Park, the Stone Mountain, Susan Kistner, Alan Douglas, and Neil Thomas of the Buncombe State Fair.

