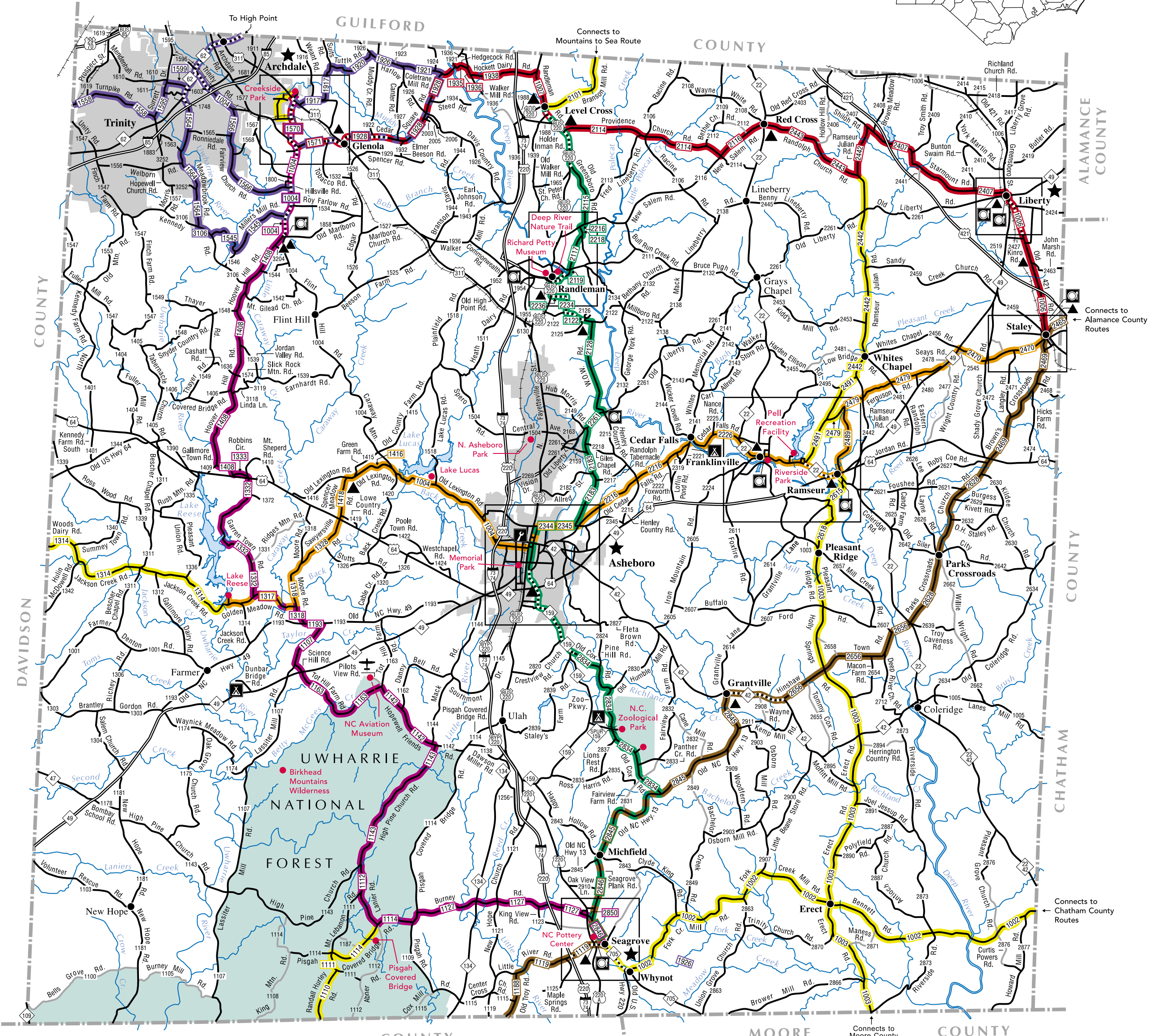
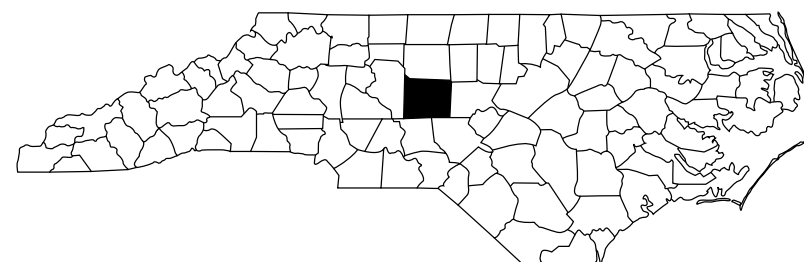


# Bicycling Randolph County



## About the Map

Whether you wish to take a short ride, an all-day trip or a longer overnight tour, the resources you need to plan your ride are all here. A 255-mile system of bicycle routes is highlighted on the map: five signed routes totaling 167 miles, an additional 55 miles of unsigned connector routes and 33 miles of the High Point Area Bicycle Routes that dip into Randolph County. By combining various portions of these routes, endless trip options are possible.

In addition to showing the bike routes, the map includes a wealth of other information. The locations of all services such as country stores, campgrounds, and restaurants are pinpointed with symbols, as shown in the legend. Campgrounds make good base camps and provide opportunities for multi-day travel over various parts of the route system. Towns that provide overnight accommodations, restaurants and other amenities are marked with a star. Points of interest are marked with a large dot.

Names are shown for all roads that are part of the route system or which cross a route. Busier sections of the routes, where extra caution is recommended, are clearly marked. On the road, these areas are posted with "Share the Road" signs, like the one shown below.

Enlarged inset maps of Asheboro, Archdale, Staley, Liberty, Seagrove, Randleman and Franklinville/Ramseur are included to help you navigate these areas and locate points of interest.

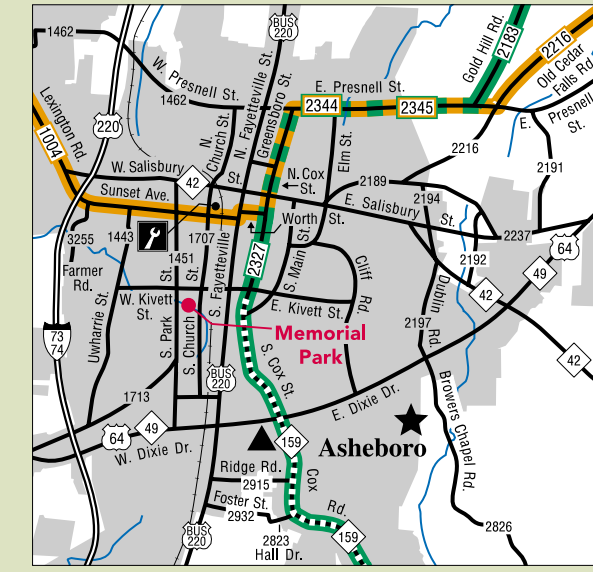
Have a safe and enjoyable ride. Please remember to be courteous to other road users.



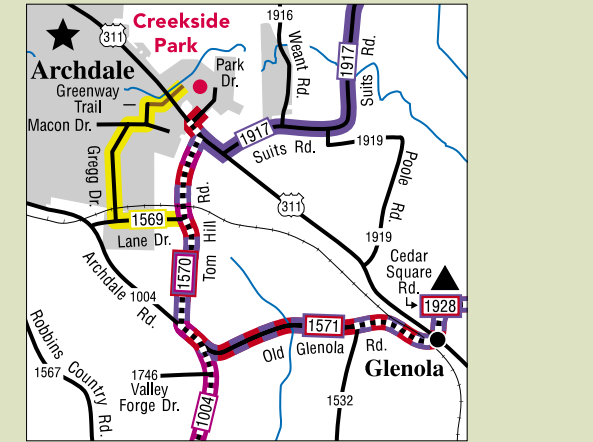
## A Note of Caution

The highlighted bicycle routes shown on this map follow roads of the North Carolina highway system and local streets. These roads do not include any special accommodations for bicycles, such as paved shoulders or bike lanes. Care has been taken to select more lightly traveled roads. In a few places, however, short segments of more heavily traveled roads are used to make connections where no other options exist. These areas are marked with "Share the Road" signs to alert motorists to the presence of cyclists. The Randolph County bike routes are not designed to be used by children, as their ability to judge traffic conditions and driver actions is not well developed.

### Asheboro



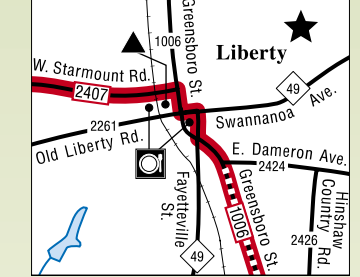
### Archdale



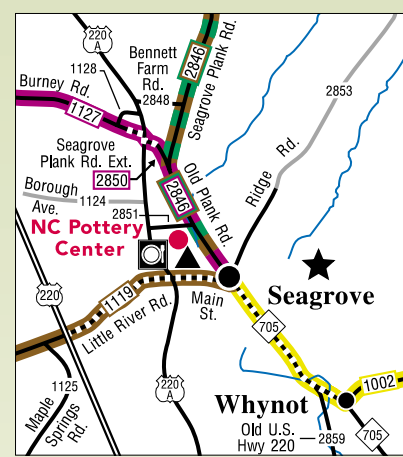
### Staley



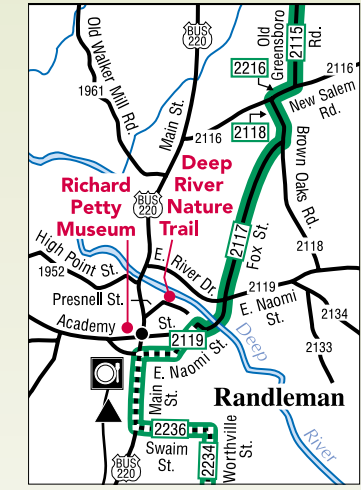
### Liberty



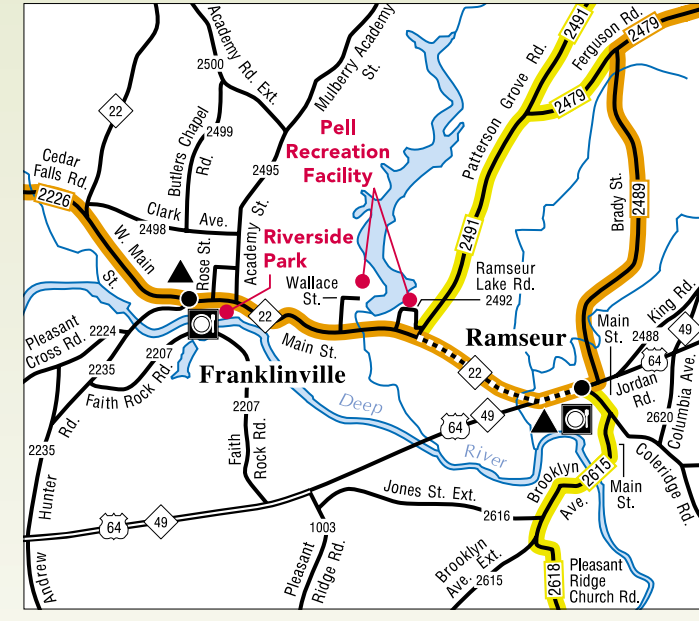
### Seagrove



### Randleman



### Franklinville/Ramseur



### Legend

Route 1 - Level Cross, Randleman, Asheboro, Zoo, Seagrove	Unsigned Connectors	Country Stores
Route 3 - Archdale to Seagrove	High Traffic Areas	Full Service Areas
Route 5 - Staley, Liberty, Level Cross, Archdale	Divided Highways	Campgrounds
Route 6 - Segment of Piedmont Spur	Paved Roads	Restaurants
Route 7 - Staley, Ramseur, Franklinville, Asheboro, W. Randolph Co.	Dirt Roads	Bicycle Shops
Route 4,6,8 - High Point Area Routes	Railroads	Points of Interest
	Creeks and Rivers	Airport

SCALE 1 0 1 2 3 4 MILES

### Milage Between Points

Archdale	Asheboro	Franklinville	Lake Reese	Level Cross	Liberty	NC Zoo	Ramseur	Seagrove	Staley	Randleman
26	31	8	17	13	21	10	16	22	25	31
31	8	17	13	21	10	16	22	25	31	8
31	23	15	36	21	10	34	8	16	21	24
34	8	16	21	24	26	30	11	3	24	21
30	11	3	24	21	13	30	11	3	24	13
30	11	3	24	21	13	30	11	3	24	13
40	16	22	25	32	31	40	16	22	25	32
35	20	10	33	25	4	35	20	10	33	25
16	10	15	23	6	25	16	10	15	23	6

Distances shown are measured along highlighted routes and may not be the shortest or the most direct way between points.

SCALE FOR ENLARGEMENTS 1 0 1 2 MILES