
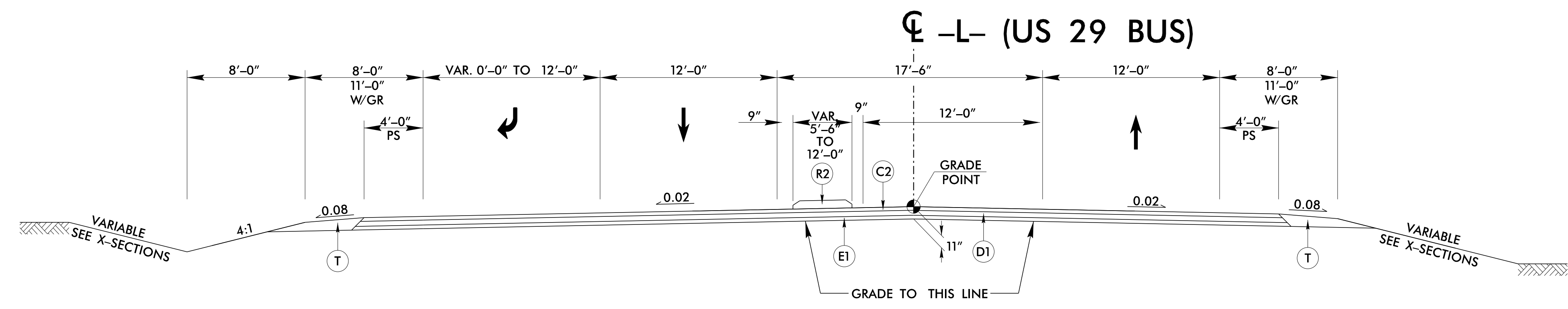
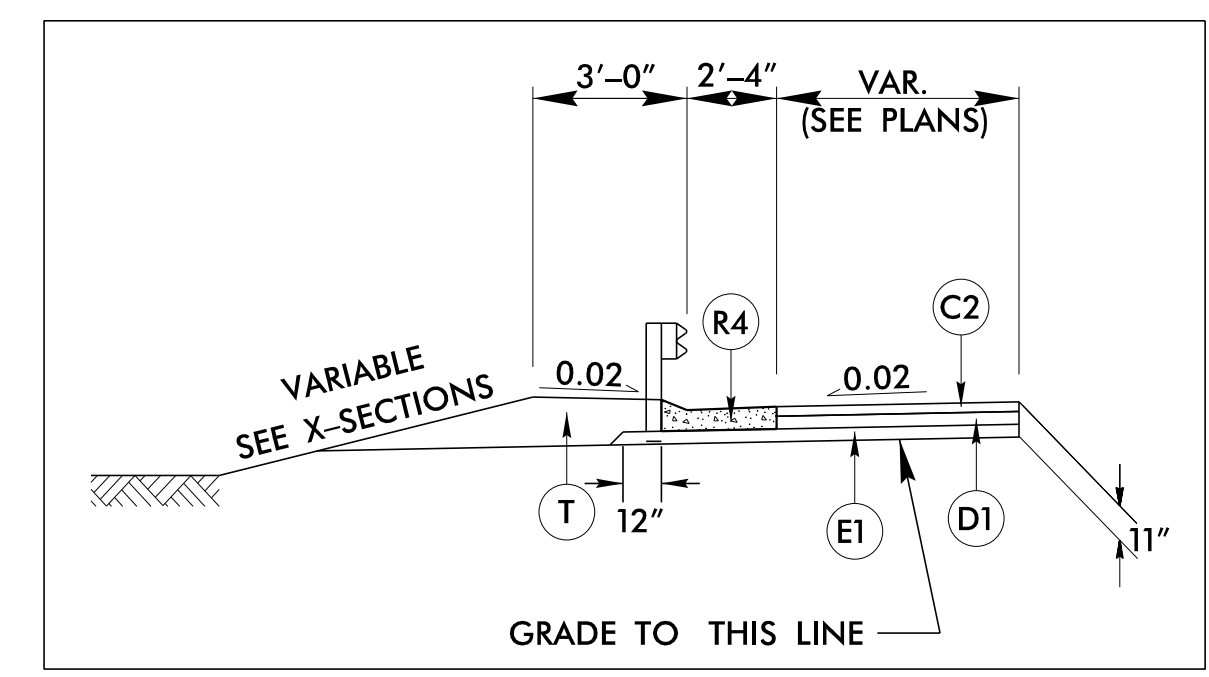


PROJECT REFERENCE BP7.R001	SHEET NO. 2A-2
ROADWAY DESIGN ENGINEER MOTT MACDONALD 1 & E, LLC LICENSE NO. F-0669	PROFESSIONAL SEAL SEAL 21102 MOTT MACDONALD 1 & E, LLC LICENSE NO. F-0669
DOCUMENT NOT CONSIDERED FINAL UNLESS ALL SIGNATURES COMPLETED	
Prepared in the Office of:	 930 Main Campus Drive, Suite 200 Raleigh, NC 27606 (919) 552-2255 www.mottmcc.com

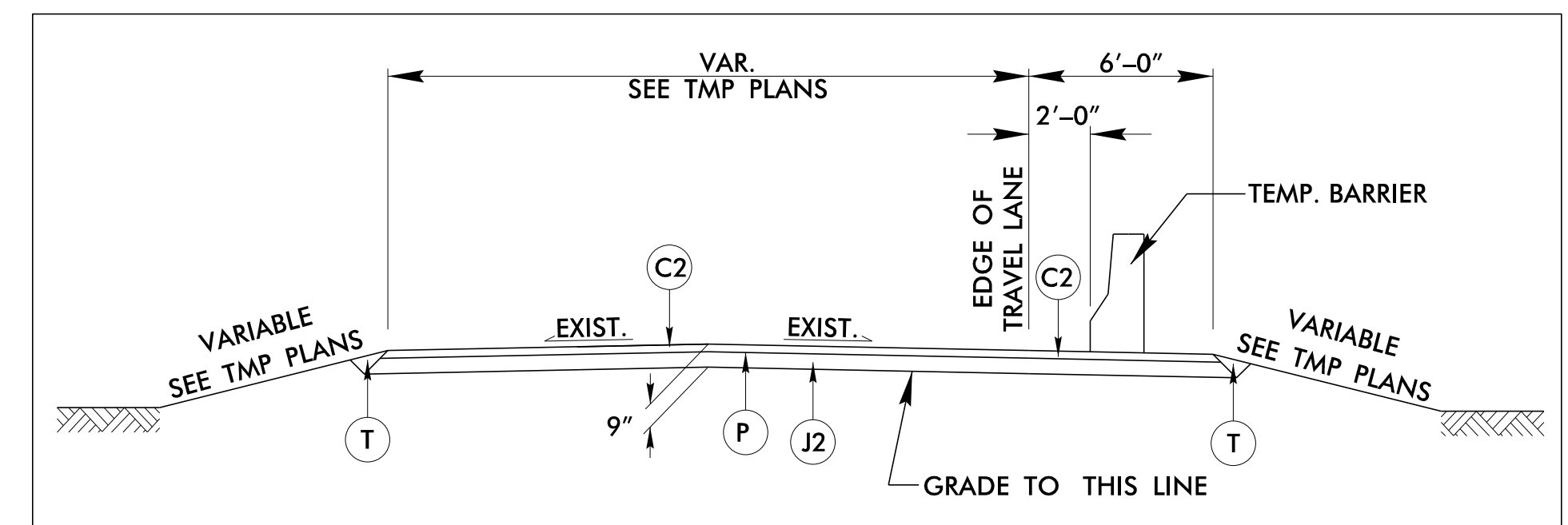


TYPICAL SECTION NO. 3

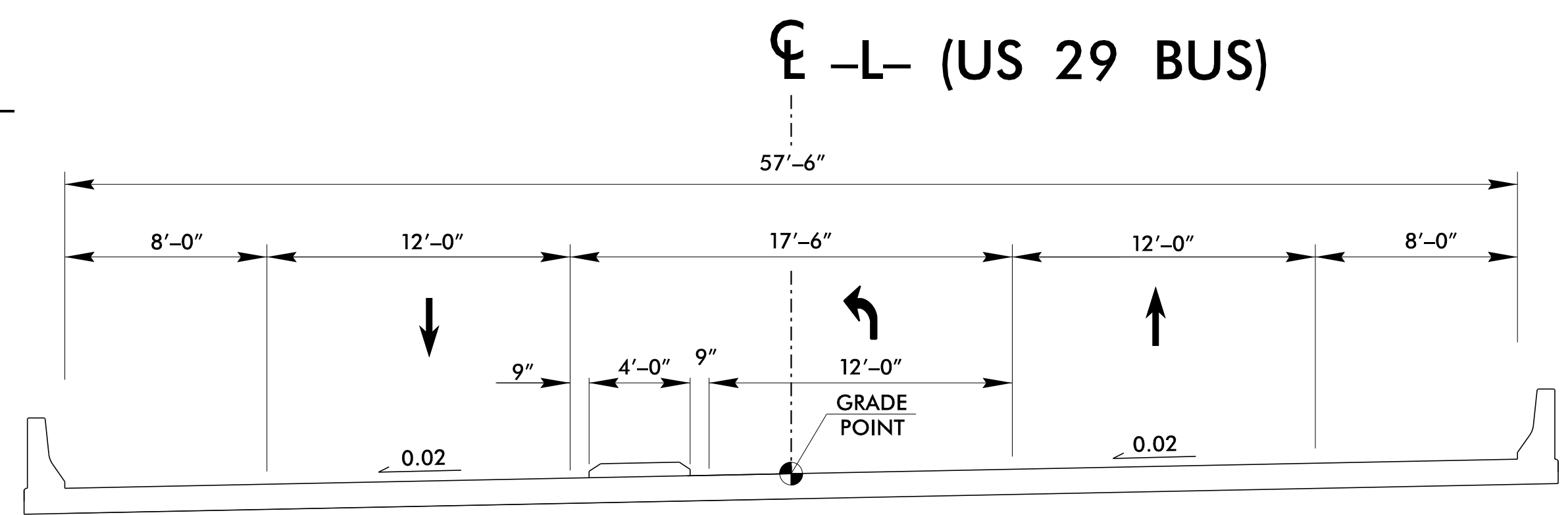
USE TYPICAL SECTION NO. 3:
 -L- STA 20+25.00 TO 20+80.27 (BEGIN BRIDGE)
 -L- STA 23+18.27 (END BRIDGE) TO 28+00.00
TRANSITION FROM TYPICAL SECTION NO. 3 TO TYPICAL SECTION NO. 5:
 -L- STA 28+00.00 TO 32+00.00



***DETAIL FOR SHOULDER BERM GUTTER IN CONJUNCTION WITH GUARDRAIL ON -L-**
 -L- STA 19+20.00 TO 20+27.94 LT
 -L- STA 23+13.11 TO 25+39.00 LT

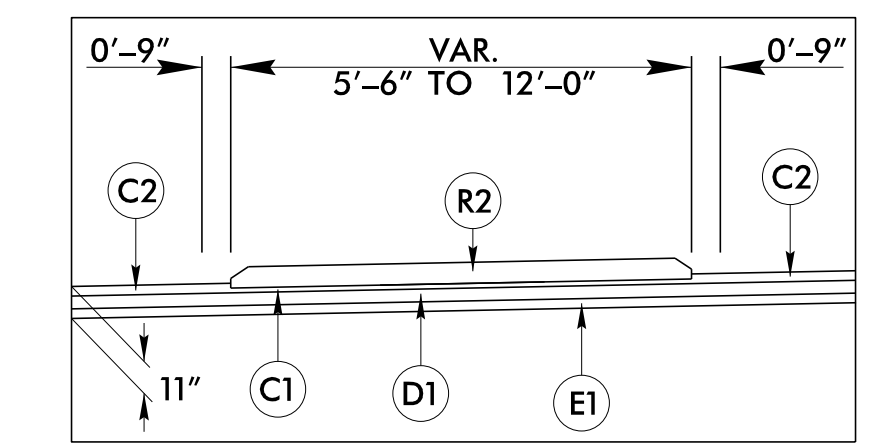


DETAIL FOR TEMPORARY PAVEMENT
USE IN CONJUNCTION WITH TYPICAL SECTIONS NO. 1, 2, 3, 8 & 9 (SEE TMP PLANS)
 -L- STA 13+70.00 TO 18+50.00
 -L- STA 24+25.00 TO 32+00.00
 -RPA- STA 10+25.00 TO 14+04.50
 -RPD- STA 11+00.00 TO 14+04.50

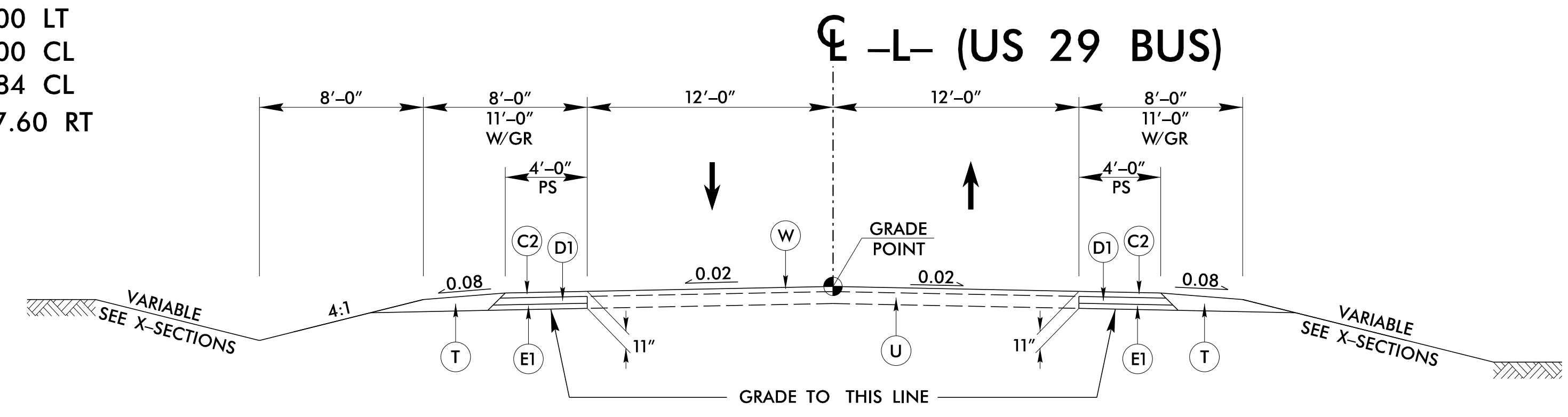


TYPICAL SECTION NO. 4

USE TYPICAL SECTION NO. 4:
 -L- STA 20+80.27 (BEGIN BRIDGE) TO 23+18.27 (END BRIDGE)
 SEE STRUCTURE PLANS FOR STRUCTURE CONSTRUCTION DETAILS



MONOLITHIC ISLAND DETAIL
USE IN CONJUNCTION WITH TYPICAL SECTIONS NO. 1, NO. 2 & NO. 3
 -L- STA 13+70.00 TO 15+00 LT
 -L- STA 16+25.00 TO 20+45.00 RT & LT
 -L- STA 23+50.00 TO 24+40.00 LT
 -L- STA 25+35.00 TO 29+00.00 CL
 -L- STA 29+00.00 TO 29+82.84 CL
 -RPD- STA 13+83.85 TO 14+17.60 RT



TYPICAL SECTION NO. 5

TRANSITION FROM TYPICAL SECTION NO. 5 TO EXISTING:
 -L- STA 32+00.00 TO 32+50.00

PAVEMENT SCHEDULE	
C2	3" S9.5C
D1	4" I19.0C
E1	4" B25.0C
J2	6" ABC
P	PRIME COAT
R2	5' MONOLITHIC ISLAND
R4	SHOULDER BERM GUTTER
T	EARTH MATERIAL
U	EXIST. PAVEMENT
W	WEDGING

NOTE: PAVEMENT EDGE SLOPES ARE 1:1 UNLESS SHOWN OTHERWISE.

3/10/2026 11:50:51 AM
 c:\pwworking\hmm\ra11.transt\jor-66165\40180146\780023_r.dwg -typ.dgn
 isep.lordan