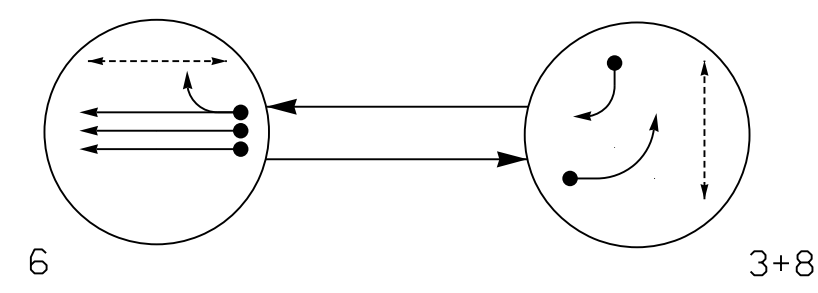


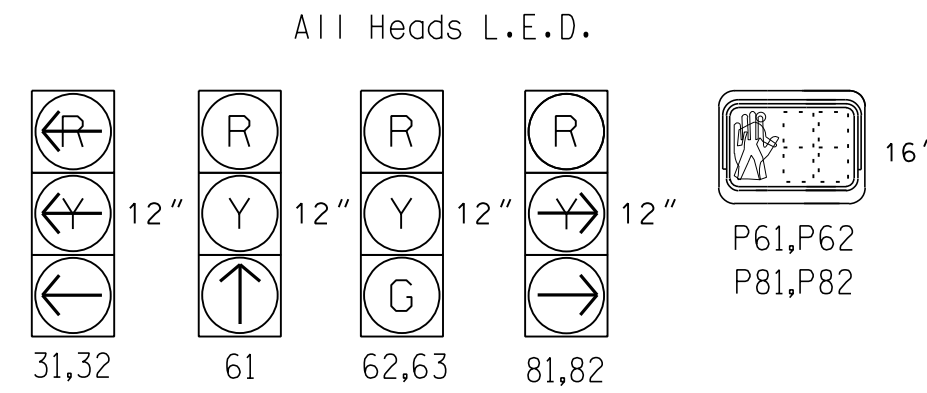
PHASING DIAGRAM



PHASING DIAGRAM DETECTION LEGEND
 ● DETECTED MOVEMENT
 ○ UNDETECTED MOVEMENT (OVERLAP)
 ○ UNSIGNALIZED MOVEMENT
 ○ PEDESTRIAN MOVEMENT

SIGNAL FACE	PHASE		
	6	3+8	10+11
31,32	←R	←R	←R
61	↑	R	R
62,63	G	R	R
81,82	R	→	R
P61,P62	W	DW	DRK
P81,P82	DW	W	DRK

SIGNAL FACE I.D.

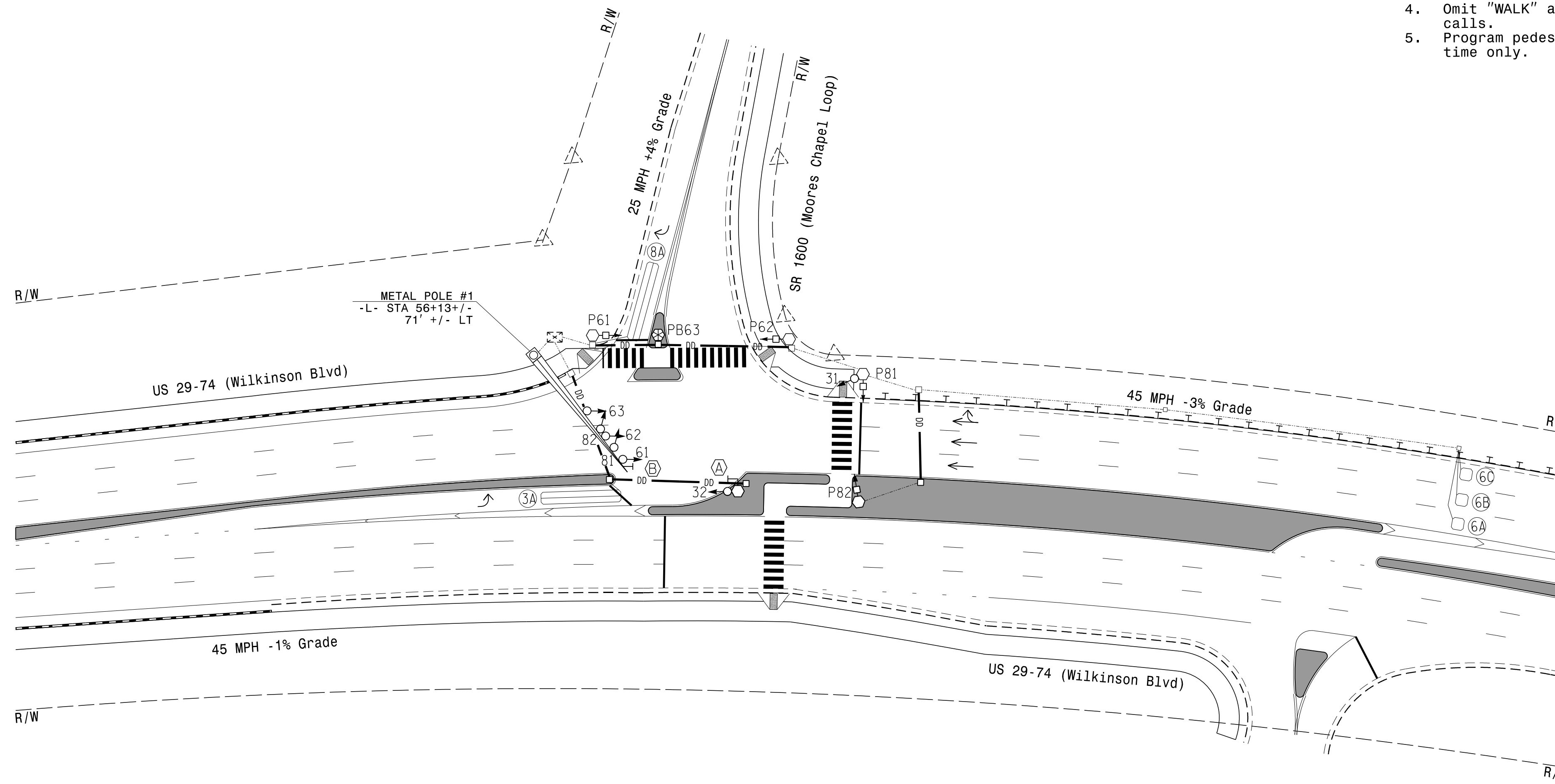


MAXTIME DETECTOR INSTALLATION CHART											
DETECTOR					PROGRAMMING						
LOOP	SIZE (FT)	DISTANCE FROM STOPBAR (FT)	TURNS	NEW LOOP	CALL PHASE	DELAY TIME	EXTEND TIME	EXTEND	ADDED INITIAL	CALL DURING GREEN	NEW CARD
3A	6X40	0	2-4-2	X	3	-	-	X	X	-	X
6A	6X6	300	5	X	6	-	-	X	X	X	-
6B	6X6	300	5	X	6	-	-	X	X	X	-
6C	6X6	300	5	X	6	-	-	X	X	X	-
8A	6X40	0	2-4-2	X	8	15.0	-	X	X	-	X

2 Phase Fully Actuated (Isolated)

NOTES

1. Refer to "Roadway Standard Drawings NCDOT" dated January 2024 and "Standard Specification for Roads and Structures" dated January 2024.
2. Do not program signal for late night flashing operation unless otherwise directed by the Engineer.
3. Set all detector units to presence mode.
4. Omit "WALK" and flashing "DON'T WALK" with no pedestrian calls.
5. Program pedestrian heads to countdown the flashing "Don't Walk" time only.



PROPOSED		EXISTING	
○	Traffic Signal Head	●	N/A
○	Modified Signal Head	○	N/A
○	Sign	○	N/A
○	Pedestrian Signal Head With Push Button & Sign	○	N/A
○	Signal Pole with Guy	○	N/A
○	Signal Pole with Sidewalk Guy	○	N/A
○	Inductive Loop Detector	○	N/A
○	Controller & Cabinet	○	N/A
○	Junction Box	○	N/A
○	2-in Underground Conduit	○	N/A
○	Right of Way	○	N/A
○	Directional Arrow	○	N/A
○	Type I Pushbutton Post	○	N/A
○	Type II Signal Pedestal	○	N/A
○	Guardrail	○	N/A
○	Curb Ramp	○	N/A
○	No U-Turn Sign (R3-4)	○	N/A
○	No Left Turn Sign (R3-2)	○	N/A

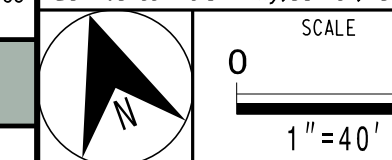
MAXTIME TIMING CHART			
FEATURE	PHASE		
	3	6	8
Walk *	-	7	7
Ped Clear	-	24	8
Min Green *	7	12	7
Passage *	2.0	6.0	2.0
Max I *	30	90	30
Yellow Change	3.0	4.8	3.0
Red Clear	2.8	1.9	2.8
Added Initial *	-	1.0	-
Maximum Initial *	-	34	-
Time Before Reduction *	-	15	-
Time To Reduce *	-	30	-
Minimum Gap	-	3.0	-
Advance Walk	-	7	-
Non Lock Detector	X	-	X
Vehicle Recall	-	MIN RECALL	-
Dual Entry	X	-	X

* These values may be field adjusted. Do not adjust Min Green and Extension times for phase 6 lower than what is shown. Min Green for all other phases should not be lower than 4 seconds.

Signal Upgrade - Final Design

DOCUMENT NOT CONSIDERED FINAL UNLESS ALL SIGNATURES COMPLETED

US 29-74 (Wilkinson Blvd) at SR 1600 (Moores Chapel Loop)	
Division 10	Mecklenburg County Charlotte
PLAN DATE: August 2025	REVIEWED BY: DT Sears
PREPARED BY: WP Erickson-Jones	REVIEWED BY:
REVISIONS	INIT. DATE



8/1/2025 R:\Projects\6051\Signal\6051_Sig\6051_U-6143_Sig\10-2479.dgn dsd