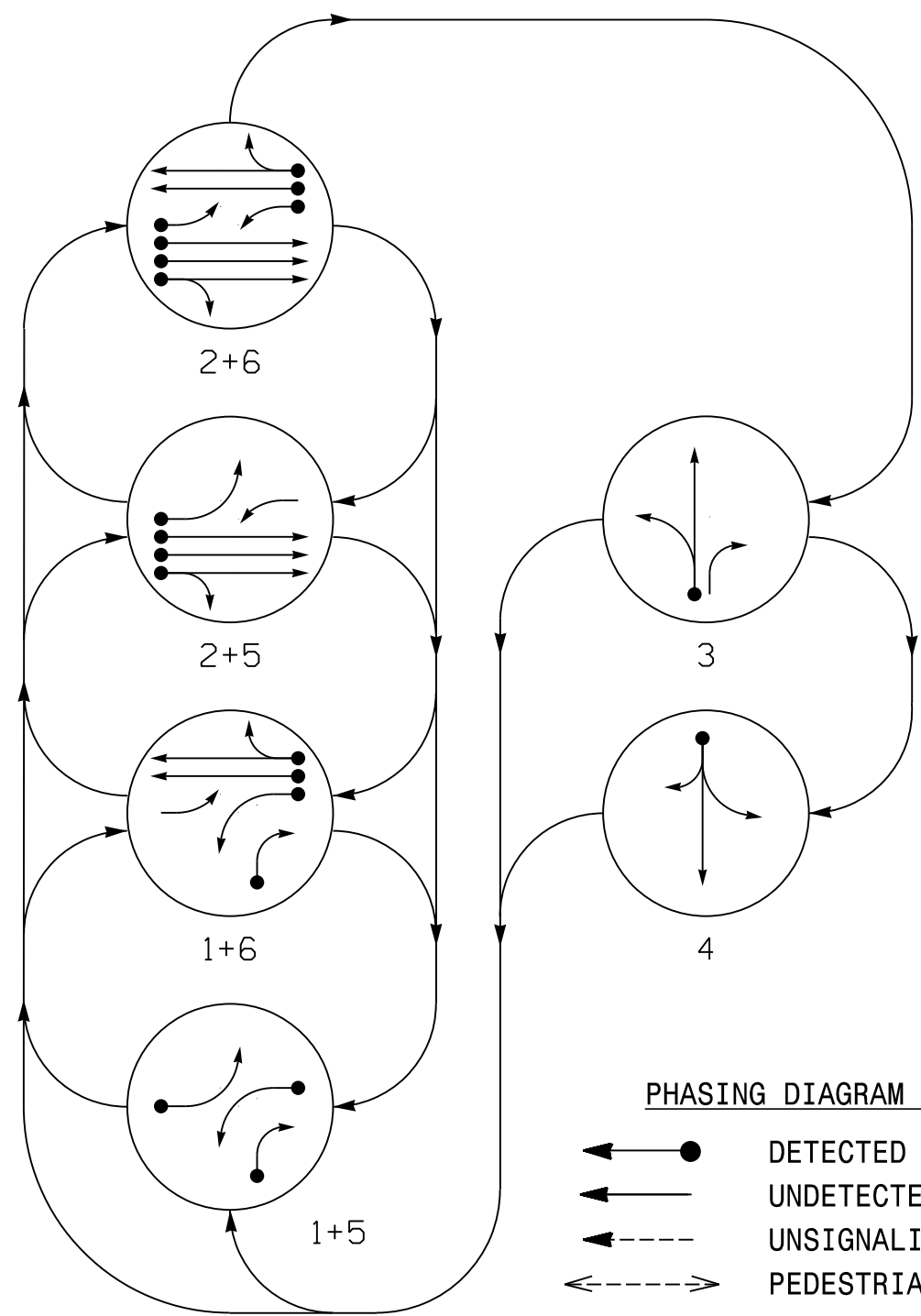
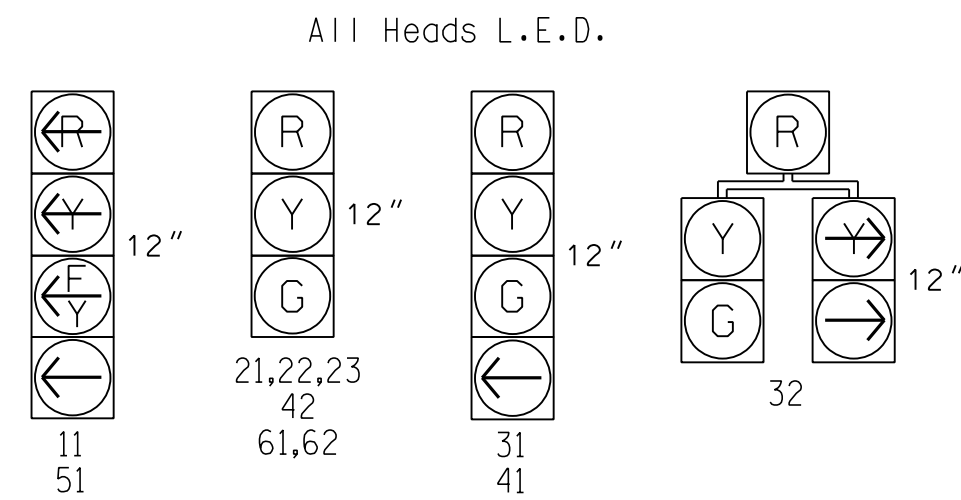


PHASING DIAGRAM



SIGNAL FACE	PHASE					
	1+5	1+6	2+5	2+6	3	4
11	←	←	←	←	←	←
21,22,23	R	R	G	G	R	R
31	R	R	R	R	G	R
32	R	R	R	R	G	R
41	R	R	R	R	G	R
42	R	R	R	R	G	R
51	←	←	←	←	←	←
61,62	R	G	R	G	R	R

SIGNAL FACE I.D.



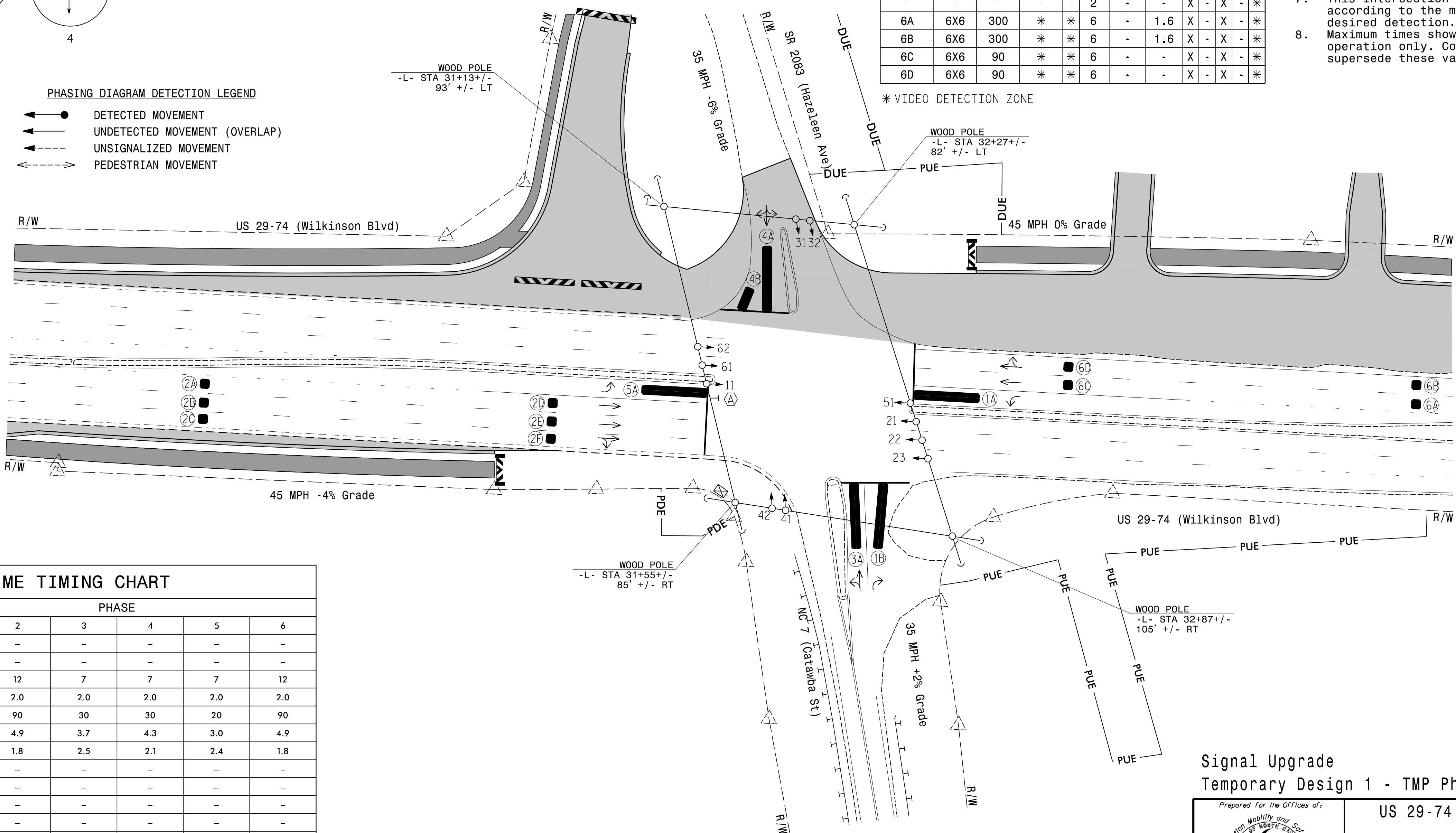
MAXTIME DETECTOR INSTALLATION CHART

ZONE	SIZE (FT)	DISTANCE FROM STOPBAR (FT)	TURNS	NEW LOOP	PROGRAMMING							
					CALL PHASE	DELAY TIME	EXTEND TIME	EXTEND	ADDED INITIAL	CALL	DELAY DURING GREEN	NEW CARD
1A	6X40	0	*	*	1	15.0	-	X	-	X	-	*
1B	6X40	0	*	*	6	-	-	X	-	X	-	*
2A	6X6	300	*	*	2	-	1.6	X	-	X	-	*
2B	6X6	300	*	*	2	-	1.6	X	-	X	-	*
2C	6X6	300	*	*	2	-	1.6	X	-	X	-	*
2D	6X6	90	*	*	2	-	-	X	-	X	-	*
2E	6X6	90	*	*	2	-	-	X	-	X	-	*
2F	6X6	90	*	*	2	-	-	X	-	X	-	*
3A	6X40	0	*	*	3	-	-	X	-	X	-	*
4A	6X40	0	*	*	4	10.0	-	X	-	X	-	*
4B	6X15	0	*	*	4	10.0	-	X	-	X	-	*
5A	6X40	0	*	*	5	15.0	-	X	-	X	-	*
6A	6X6	300	*	*	6	-	1.6	X	-	X	-	*
6B	6X6	300	*	*	6	-	1.6	X	-	X	-	*
6C	6X6	90	*	*	6	-	-	X	-	X	-	*
6D	6X6	90	*	*	6	-	-	X	-	X	-	*

6 Phase Fully Actuated (Belmont Signal System)

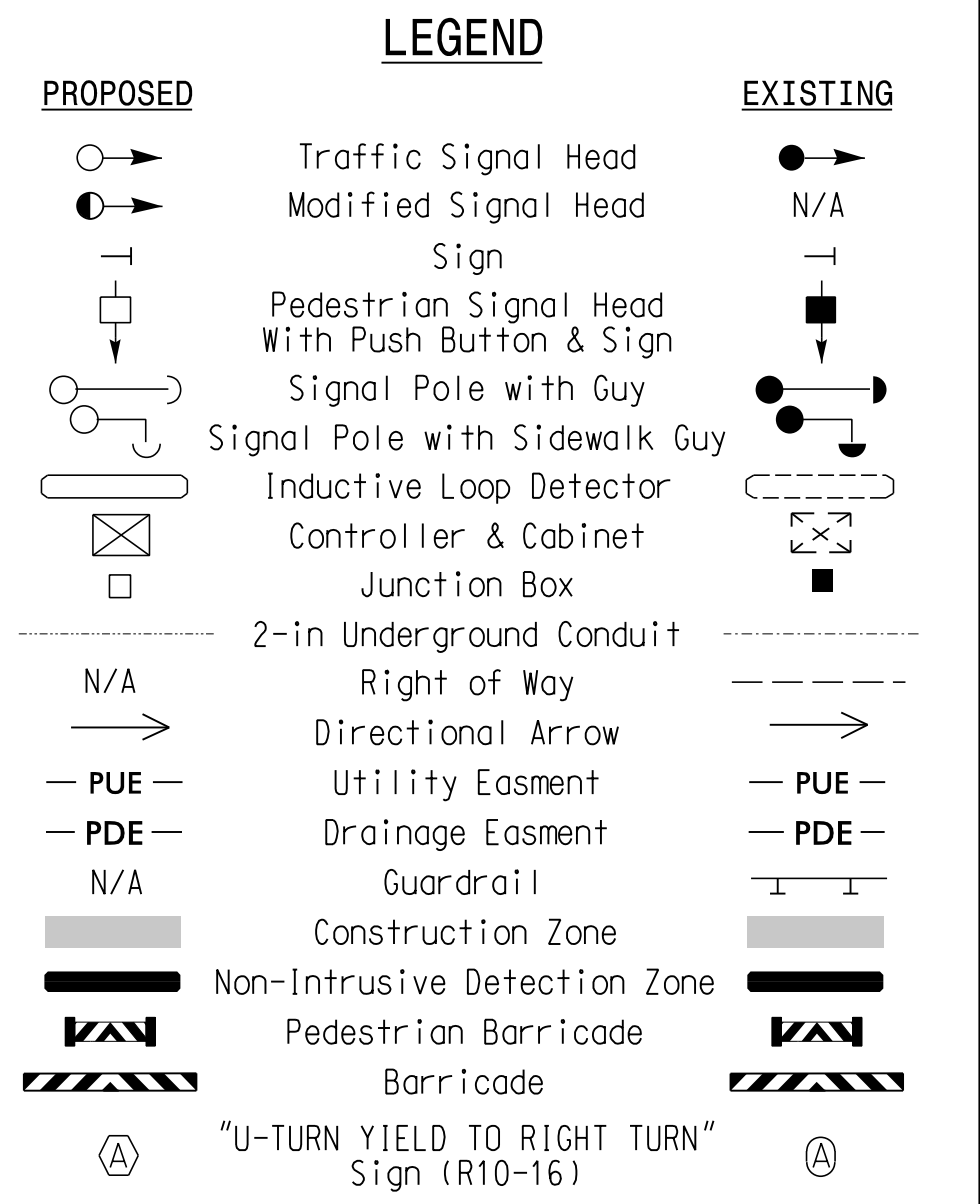
NOTES

- Refer to "Roadway Standard Drawings NCDOT" dated January 2024 and "Standard Specification for Roads and Structures" dated January 2024.
- Do not program signal for late night flashing operation unless otherwise directed by the Engineer.
- Phase 1 and/or phase 5 may be reversed.
- The order of phase 3 and phase 4 may be reversed.
- Set all detector units to presence mode.
- Locate new cabinet so as not to obstruct sight distance of vehicles turning right on red.
- This intersection uses video detection. Install detectors according to the manufacturer's instructions to achieve the desired detection.
- Maximum times shown in timing chart are for free-run operation only. Coordinated signal system timing values supersede these values.



FEATURE	PHASE					
	1	2	3	4	5	6
Walk *	-	-	-	-	-	-
Ped Clear	-	-	-	-	-	-
Min Green *	7	12	7	7	7	12
Passage *	2.0	2.0	2.0	2.0	2.0	2.0
Max 1 *	20	90	30	30	20	90
Yellow Change	3.0	4.9	3.7	4.3	3.0	4.9
Red Clear	2.6	1.8	2.5	2.1	2.4	1.8
Added Initial *	-	-	-	-	-	-
Maximum Initial *	-	-	-	-	-	-
Time Before Reduction *	-	-	-	-	-	-
Time To Reduce *	-	-	-	-	-	-
Minimum Gap	-	-	-	-	-	-
Advance Walk	-	-	-	-	-	-
Non Lock Detector	X	-	X	X	X	-
Vehicle Recall	-	MIN RECALL	-	-	-	MIN RECALL
Dual Entry	-	-	-	-	-	-

\* These values may be field adjusted. Do not adjust Min Green and Extension times for phases 2 and 6 lower than what is shown. Min Green for all other phases should not be lower than 4 seconds.



Signal Upgrade Temporary Design 1 - TMP Phase I Step 2

Prepared For the Offices of:

8001 Six Forks Road Suite 700 | Raleigh, North Carolina 27615-2965  
NC License No. F-0112

750 N. Greenfield Pkwy, Garner, NC 27529

Engineers | Construction Managers | Planners | Scientists  
www.rk&k.com  
Responsive People | Creative Solutions

US 29-74 (Wilkinson Blvd)  
at  
NC 7 (Catawba St) /  
SR 2083 (Hazeleen Avenue)

Division 12 Gaston County Belmont

PLAN DATE: August 2025 REVIEWED BY: DT Sears

PREPARED BY: WP Erickson-Jones REVIEWED BY:

SEAL

8/1/2025

SIGNATURE DATE

SIG. INVENTORY NO. 12-099771

8/1/2025 R:\Projects\6051\Drawings\Signal\Signal\12-099771.dwg dsd