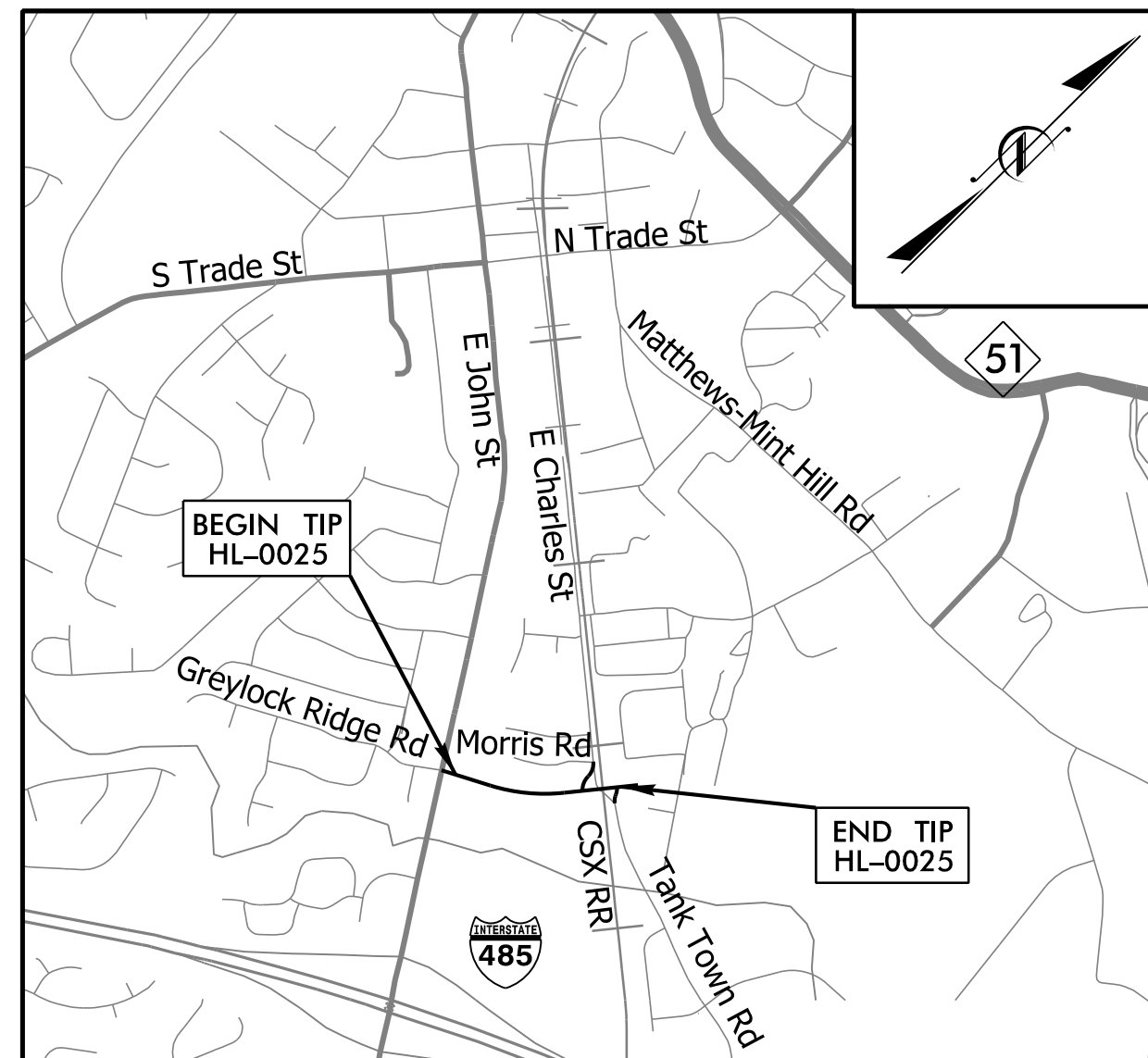


See Sheet 1A For Index of Sheets
See Sheet 1B For Conventional Symbols



VICINITY MAP

N.T.S.

UBO PLANS

STATE OF NORTH CAROLINA
DIVISION OF HIGHWAYS

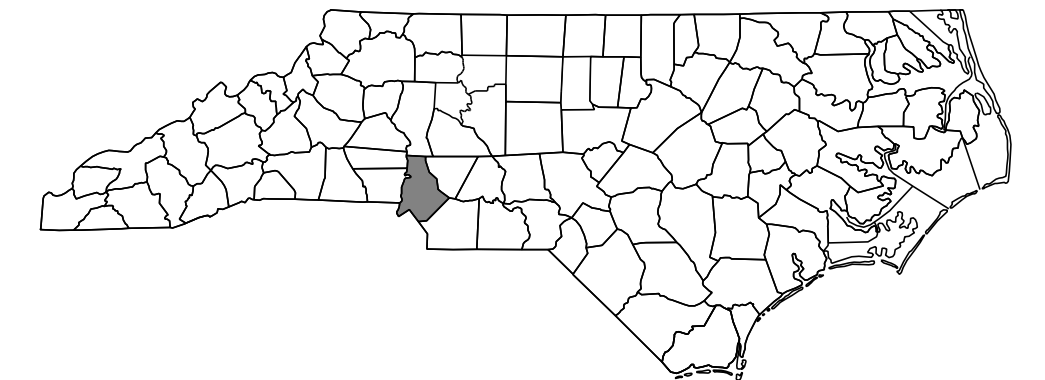
MECKLENBURG COUNTY

LOCATION: GREYLOCK RIDGE ROAD EXTENSION
FROM E. JOHN ST. TO TANK TOWN
RD. IN MATTHEWS, NC

UTILITIES BY OTHERS PLANS

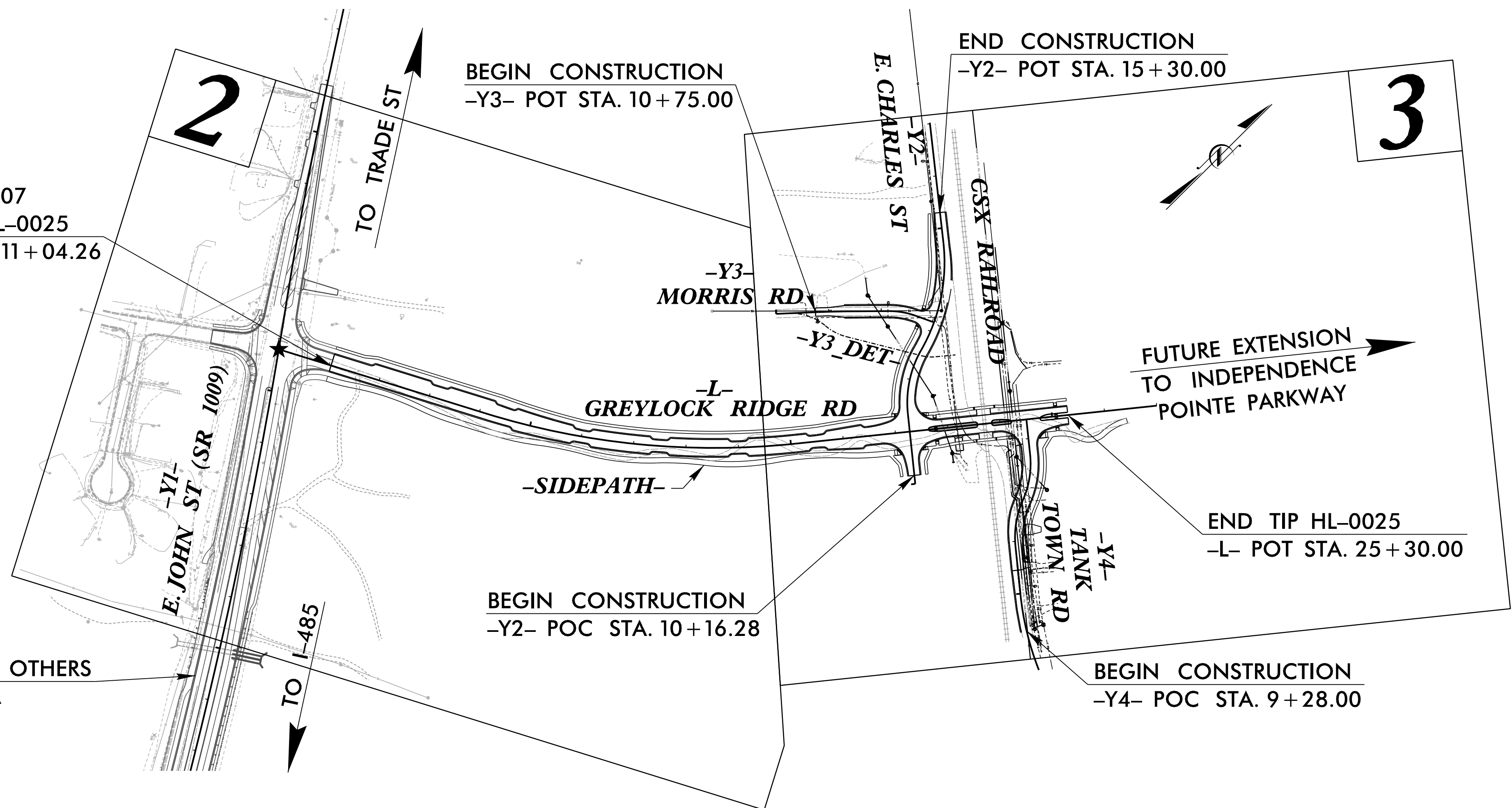
T.I.P. NO.	SHEET NO.
HL-0025	UO-1

NOTE:
ALL UTILITY WORK SHOWN ON THESE SHEETS WILL BE DONE BY OTHERS.
NO PAYMENT WILL BE MADE TO THE CONTRACTOR FOR UTILITY WORK SHOWN ON THESE SHEETS.



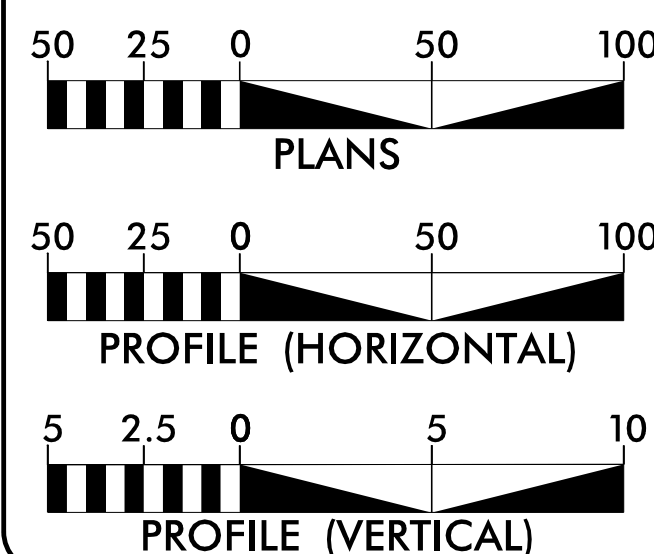
END TIP I-5507
BEGIN TIP HL-0025
-L- POT STA. 11+04.26

CONSTRUCTION BY OTHERS
TIP I-5507 /U-4714A



★ PROPOSED SIGNAL

GRAPHIC SCALES



INDEX OF SHEETS

SHEET NO.:	DESCRIPTION:
UO-1	TITLE SHEET
UO-1A	UTILITIES SYMBOLS
UO-2 THRU UO-3	UBO PLAN SHEETS

UTILITY OWNERS WITH CONFLICTS

- (A) POWER DISTRIBUTION - DUKE
- (B) TELECOMMUNICATIONS - WINDSTREAM
- (C) TELECOMMUNICATIONS - SPECTRUM
- (D) TELECOMMUNICATIONS - SPRINT

UTILITY OWNERS WITHOUT CONFLICTS

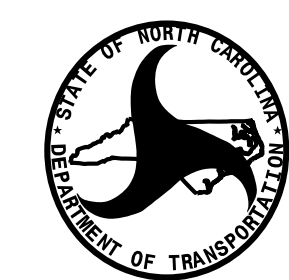
- (A) TELECOMMUNICATIONS - VERIZON
- (B) GAS - PNG

PREPARED IN THE OFFICE OF:



A. MORTON THOMAS AND ASSOCIATES, INC.
10735 DAVID TAYLOR DRIVE, SUITE 310 • CHARLOTTE, NC 28262
(704) 595-9975 • NC LICENSE NO. F-1049
WWW.AMTENGINEERING.COM

STEVE KARNIS, PE	PROJECT ENGINEER
DAN MORGAN	PROJECT DESIGN ENGINEER
JOSEPH HATLEY	PROJECT UTILITY COORDINATOR



DIVISION OF HIGHWAYS
DIVISION 10
716 W. MAIN ST
ALBEMARLE, NC 28001
PHONE (704) 983-4400
FAX (704) 982-3146

TRAVIS PRESLAR, PE	DIVISION PROJECT TEAM LEAD
LYNN BASINGER	DIVISION UTILITY ENGINEER
ADAM PRESLAR	SR. DIV. UTILITY COORDINATOR
BARRY CARLTON	DIVISION UTILITY COORDINATOR

TIP PROJECT: HL-0025

CONTRACT: C205013