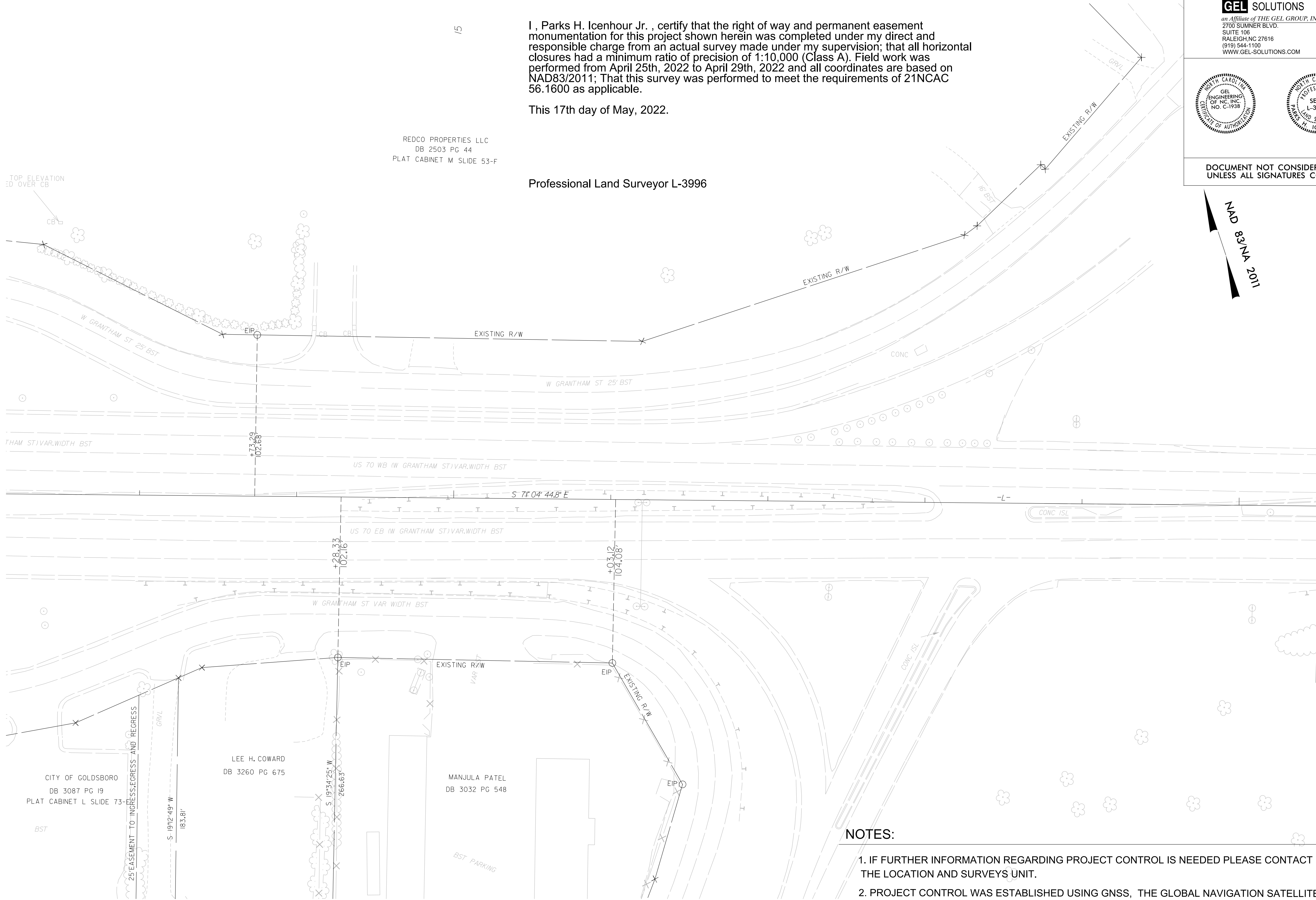


REVISIONS



I, Parks H. Icenhour Jr., certify that the right of way and permanent easement monumentation for this project shown herein was completed under my direct and responsible charge from an actual survey made under my supervision; that all horizontal closures had a minimum ratio of precision of 1:10,000 (Class A). Field work was performed from April 25th, 2022 to April 29th, 2022 and all coordinates are based on NAD83/2011; That this survey was performed to meet the requirements of 21NCAC 56.1600 as applicable.

This 17th day of May, 2022.

Professional Land Surveyor L-3996

REDCO PROPERTIES LLC
DB 2503 PG 44
PLAT CABINET M SLIDE 53-F

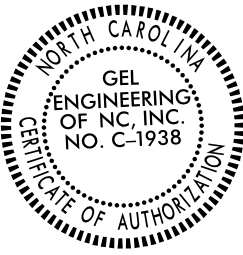

CITY OF GOLDSBORO
DB 3087 PG 19
PLAT CABINET L SLIDE 73-F

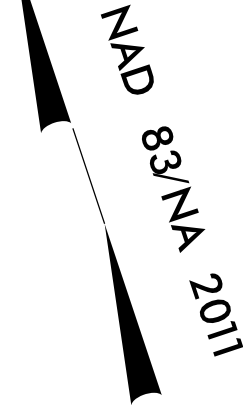
LEE H. COWARD
DB 3260 PG 675

MANJULA PATEL
DB 3032 PG 548

NOTES:

1. IF FURTHER INFORMATION REGARDING PROJECT CONTROL IS NEEDED PLEASE CONTACT THE LOCATION AND SURVEYS UNIT.
2. PROJECT CONTROL WAS ESTABLISHED USING GNSS, THE GLOBAL NAVIGATION SATELLITE SYSTEM.
3. RIGHT OF WAY MONUMENTATION ESTABLISHED 4/25/2022 TO 4/29/2022.

PROJECT REFERENCE NO.	SHEET NO.
B-4838	RW04
Location and Surveys	
GEL SOLUTIONS <small>an Affiliate of THE GEL GROUP, INC. 2700 SUMNER BLVD. SUITE 106 RALEIGH, NC 27616 (919) 544-1100 WWW.GEL-SOLUTIONS.COM</small>	
	
DOCUMENT NOT CONSIDERED FINAL UNLESS ALL SIGNATURES COMPLETED	



MATCH LINE -L- STA. 20+50 SEE SHEET 5