

OUTPUT CHANNEL CONFIGURATION

Front Panel
Main Menu >Controller >More>Channels>Channels Config

Web Interface
Home >Controller >Advanced IO>Channels>Channels Configuration

Channel Configuration

Channel	Control Type	Control Source	Flash Yellow	Flash Red	Flash Alt	MMU Channel
1	Phase Vehicle	1		X	X	1
2	Phase Vehicle	2		X		2
3	Phase Vehicle	3		X	X	3
4	Phase Vehicle	4		X		4
5	Overlap	3		X		5
6	Phase Vehicle	6		X	X	6
7	Overlap	4		X		7
8	Phase Vehicle	8		X	X	8
9	Overlap	1		X	X	9
10	Overlap	2		X	X	10
11	Overlap	3		X		11
12	Overlap	4		X		12
13	Phase Ped	2				13
14	Phase Ped	4				14
15	Phase Ped	6				15
16	Phase Ped	8				16
17	Overlap	5		X	X	17
18	Overlap	6		X		18

NOTE OL3 ASSIGNED
TO CHANNEL 5
NOTE OL4 ASSIGNED
TO CHANNEL 7

↑ ↑
NOTE: ALL RED FLASH

MAXTIME OVERLAP PROGRAMMING DETAIL

Front Panel
Main Menu >Controller >Overlap >Overlap Parameters/Overlap Timings

Web Interface
Home >Controller >Overlap Configuration >Overlaps

Overlap Plan 1

Overlap	3	4
Type	FYA 4 - Section	FYA 4 - Section
Included Phases	2	2
Modifier Phases	7	7
Modifier Overlaps	-	-
Trail Green	0	0
Trail Yellow	0.0	0.0
Trail Red	0.0	0.0

MAXTIME OVERLAP PROGRAMMING DETAIL
FOR ALTERNATE PHASING

Front Panel
Main Menu >Controller >Overlap >Overlap Parameters/Overlap Timings

Web Interface
Home >Controller >Overlap Configuration >Overlaps

In the table view of the web interface, right click on "Overlap" in the top left corner of the table. Copy the entire contents of Overlap Plan 1. Paste Overlap Plan 1 into Overlap Plan 2. Modify Overlap Plan 2 as shown below and save changes.

Overlap Plan 2

Overlap	3	4
Type	FYA 4 - Section	FYA 4 - Section
Included Phases	-	-
Modifier Phases	7	7
Modifier Overlaps	-	-
Trail Green	0	0
Trail Yellow	0.0	0.0
Trail Red	0.0	0.0

← NOTICE INCLUDED PHASES
ON OL3 AND OL4

MAXTIME STARTUP AND SOFTWARE FLASH
PROGRAMMING DETAIL

Front Panel
Main Menu >Controller >Unit

Web Interface
Home >Controller >Unit

Modify parameters as shown below and save changes.

Start Up Parameters

StartUp Clearance Hold
6

Unit Flash Parameters

All Red Flash Exit Time
6

FYA SIGNAL OUTPUT REMAPPING ASSIGNMENT
PROGRAMMING DETAIL FOR SIGNAL HEADS 71&72

Front Panel
Main Menu >Controller >More >Advanced IO >Output Points

Web Interface
Home >Controller >Advanced IO >Cabinet Configuration >Output Points

IO Module 1

Output Point	Description	Output Control Type	Index
33	C1-35	Not Active	
34	C1-36	Phase Green	7
35	C1-37	Not Active	
36	C1-38	Phase Green	7

NOTICE
OUTPUT
REMAPPING

THIS ELECTRICAL DETAIL IS FOR
THE SIGNAL DESIGN: 06-1389T
DESIGNED: Feb 2025
SEALED: 2/10/2025
REVISED:

Temporary Signal - TMP Phase III, Step 1
Electrical Detail - Sheet 2 of 3

DOCUMENT NOT CONSIDERED
FINAL UNLESS ALL
SIGNATURES COMPLETED

ELECTRICAL AND PROGRAMMING
DETAILS FOR:

SR 1997 (Fayetteville Road)
at
SR 1984 (Linkhaw Road)
Temporary U-Turn North

Division 6 Robeson County Lumberton

PLAN DATE: Feb 2025 REVIEWED BY: H.M. Surti

PREPARED BY: R.L. Aristondo REVIEWED BY: T.M. Woody

REVISIONS INIT. DATE

DATE

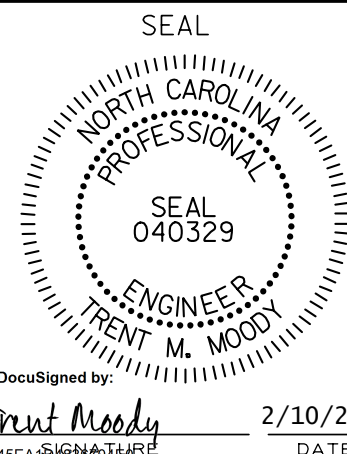
DATE

DATE

DATE

DATE

STV
STV Engineers, Inc.
900 West Trade St., Suite 715
Charlotte, NC 28202
(704) 372-1885
NC License Number F-0991



DocuSigned by: Trent Moody 2/10/2025

DATE

DATE

DATE

DATE

DATE

SIG. INVENTORY NO. 06-1389T