

PED 3 PROGRAMMING DETAIL

Front Panel
Main Menu >Controller >Detector >Ped Det Plans

Web Interface
Home >Controller >Detector Configuration >Pedestrian Detector

Plan 1

Detector	Description	Call Phase	Call Overlap
2		2	0
4	P41, P42	4	0
6	P61, P62	6	0
8	P31, P32	3	0

NOTICE PHASE 3 PED
ASSIGNED TO
DETECTOR 8 PED →

Front Panel
Main Menu >Controller >More>Channels>Channels Config

Web Interface
Home >Controller >Advanced IO>Channels>Channels Configuration

Channel Configuration

Channel	Control Type	Control Source	Flash Yellow	Flash Red	Flash Alt	MMU Channel
1	Overlap	7		X	X	1
2	Phase Vehicle	2		X		2
3	Phase Vehicle	3		X	X	3
4	Phase Vehicle	4		X		4
5	Overlap	8		X		5
6	Phase Vehicle	6		X	X	6
7	Phase Vehicle	7		X		7
8	Overlap	9		X	X	8
9	Overlap	1		X	X	9
10	Overlap	2		X	X	10
11	Overlap	3		X		11
12	Overlap	4		X		12
13	Phase Ped	2				13
14	Phase Ped	4				14
15	Phase Ped	6				15
16	Phase Ped	3				16
17	Overlap	5		X	X	17
18	Overlap	6		X		18

NOTICE OL7
ASSIGNED TO CHANNEL 1 →

NOTICE OL8
ASSIGNED TO CHANNEL 5 →

NOTICE OL9
ASSIGNED TO CHANNEL 8 →

NOTICE PHASE 3 PED
ASSIGNED TO CHANNEL 16 →

↑
NOTE: ALL RED FLASH
↑

MAXTIME OVERLAP PROGRAMMING DETAIL

Front Panel
Main Menu >Controller >Overlap >Overlap Parameters/Overlap Timings

Web Interface
Home >Controller >Overlap Configuration >Overlaps

Overlap Plan 1

Overlap	1	2	5	7	8	9
Type	FYA 4 - Section	FYA 4 - Section	Normal	Normal	Normal	Normal
Included Phases	3	6	1	4,5	4,5	3
Modifier Phases	4,5	3	-	-	-	-
Modifier Overlaps	-	-	-	-	-	-
Trail Green	0	0	0	0	0	0
Trail Yellow	0.0	0.0	0.0	0.0	0.0	0.0
Trail Red	0.0	0.0	0.0	0.0	0.0	0.0

FLASHER CIRCUIT MODIFICATION DETAIL

IN ORDER TO INSURE THAT SIGNALS FLASH CONCURRENTLY ON THE SAME APPROACH, MAKE THE FOLLOWING FLASHER CIRCUIT CHANGES:

1. ON REAR OF PDA - REMOVE WIRE FROM TERM. T2-4 AND TERMINATE ON T2-2.
2. ON REAR OF PDA - REMOVE WIRE FROM TERM. T2-5 AND TERMINATE ON T2-3.
3. REMOVE FLASHER UNIT 2.

THE CHANGES LISTED ABOVE TIES ALL PHASES AND OVERLAPS TO FLASHER UNIT 1.

MAXTIME STARTUP AND SOFTWARE FLASH PROGRAMMING DETAIL

Front Panel
Main Menu >Controller >Unit

Web Interface
Home >Controller >Unit

Modify parameters as shown below and save changes.

Start Up Parameters

StartUp Clearance Hold
6

Unit Flash Parameters

All Red Flash Exit Time
6

THIS ELECTRICAL DETAIL IS FOR
THE SIGNAL DESIGN: 06-0537T5
DESIGNED: June 2025
SEALED: 6/11/2025
REVISED:

Temporary Design 5 - TMP Phase IV, Step 2
Electrical Detail - Sheet 2 of 2

DOCUMENT NOT CONSIDERED
FINAL UNLESS ALL
SIGNATURES COMPLETED

ELECTRICAL AND PROGRAMMING
DETAILS FOR:

SR 1997 (Fayetteville Road)
at
SR 1984 (Linkhaw Road)

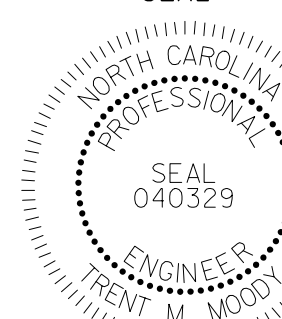
Division 6 Robeson County Lumberton

PLAN DATE: June 2025 REVIEWED BY: H.M. Surti

PREPARED BY: R.L. Aristondo REVIEWED BY: T.M. Moody

REVISIONS INIT. DATE

SEAL



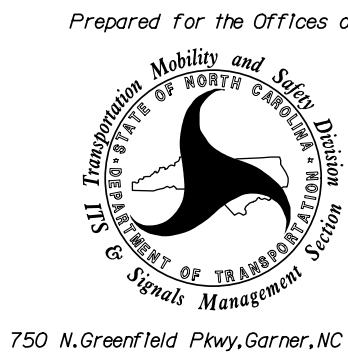
DocuSigned by: Trent M. Moody 6/11/2025

DATE

SIG. INVENTORY NO. 06-0537T5



STV Engineers, Inc.
900 West Trade St., Suite 715
Charlotte, NC 28202
(704) 372-1885
NC License Number F-0991



750 N.Greenfield Pkwy, Garner, NC 27529