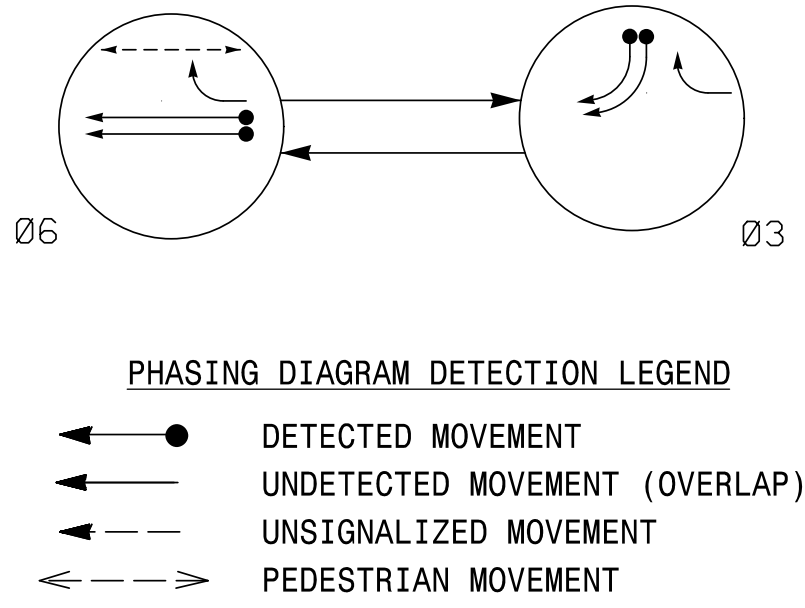


PHASING DIAGRAM

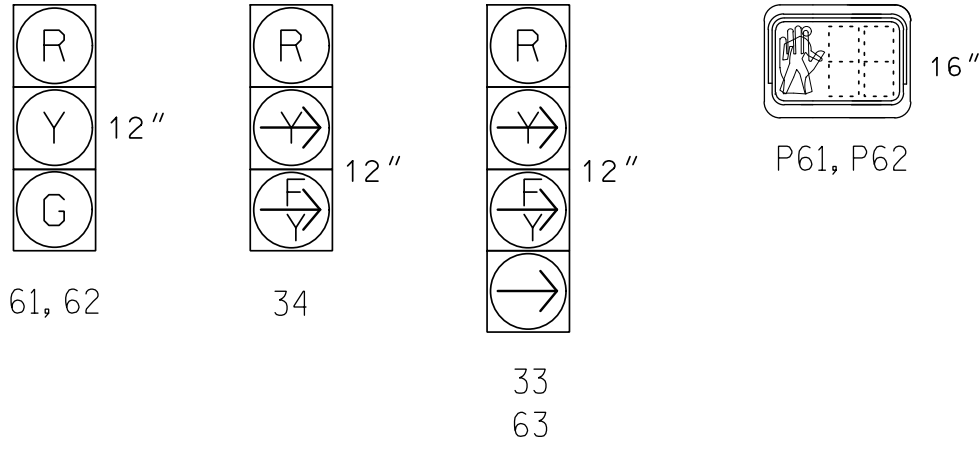


SIGNAL FACE	PHASE		
	Ø 6	Ø 3	FLASH
** 33	R	F	R
34	R	F	R
61, 62	G	R	R
63	F	R	R
P61, P62	W	DW	DRK

\* Bag Green Arrow on Head 33 during this Construction Phase

SIGNAL FACE I.D.

All Heads L.E.D.

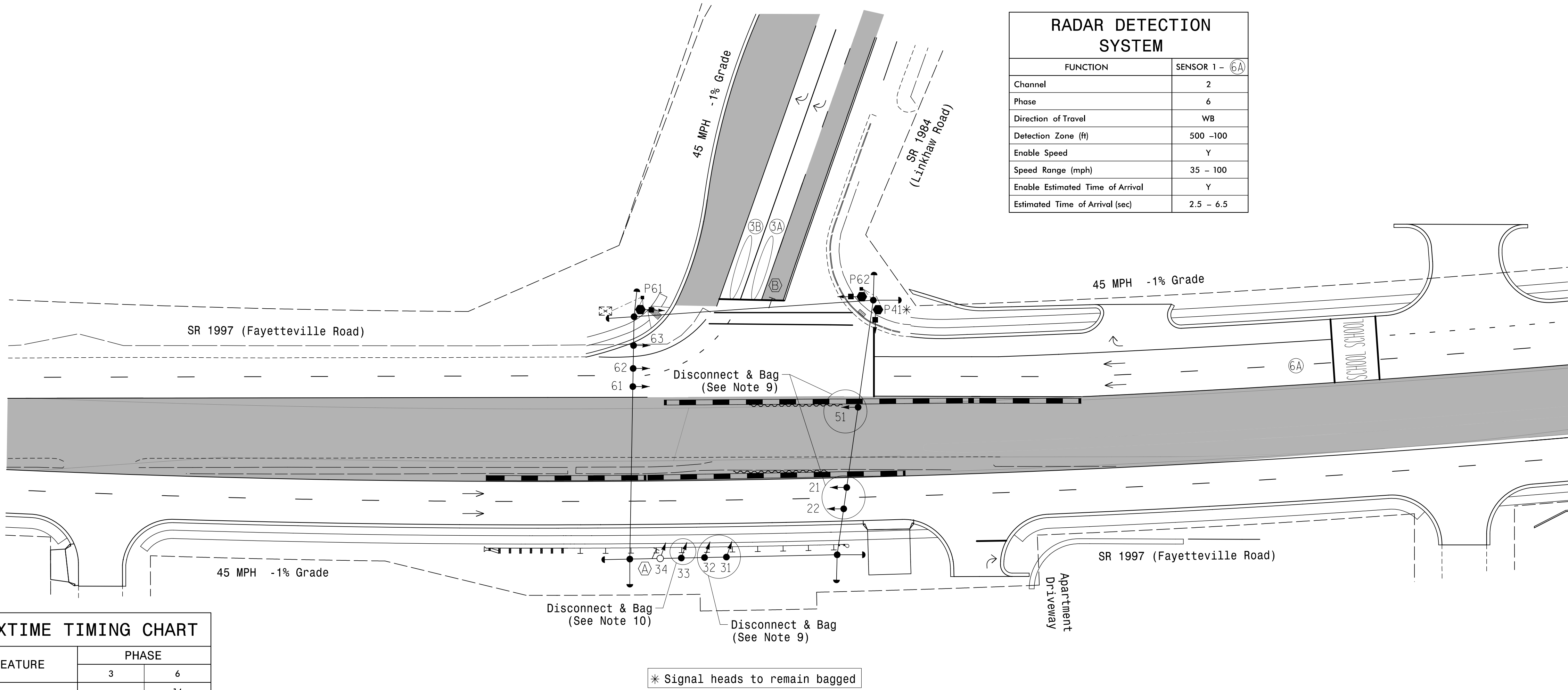


MAXTIME DETECTOR INSTALLATION CHART										
DETECTOR					PROGRAMMING					
LOOP	SIZE (FT)	DISTANCE FROM STOPBAR (FT)	TURNS	NEW LOOP	CALL PHASE	DELAY TIME	EXTEND TIME	EXTEND	ADDED INITIAL CALL	DELAY DURING GREEN NEW CARD
3A	6X40	0	*	*	3	15	-	X	-	X
3B	6X40	0	*	*	3	15	-	X	-	X

\* Multi-zone Microwave Detection Zone

RADAR DETECTION SYSTEM

FUNCTION	SENSOR 1 - 6A
Channel	2
Phase	6
Direction of Travel	WB
Detection Zone (ft)	500 -100
Enable Speed	Y
Speed Range (mph)	35 - 100
Enable Estimated Time of Arrival	Y
Estimated Time of Arrival (sec)	2.5 - 6.5



MAXTIME TIMING CHART		
FEATURE	PHASE	
	3	6
Walk *	-	14
Ped Clear *	-	29
Min Green	7	12
Passage *	2.0	2.0
Max 1 *	30	90
Yellow Change	3.2	4.6
Red Clear	2.1	2.0
Added Initial *	-	-
Maximum Initial *	-	-
Time Before Reduction *	-	-
Time To Reduce *	-	-
Minimum Gap	-	-
Advance Walk	-	7
Non Lock Detector	X	-
Vehicle Recall	-	MIN RECALL
Dual Entry	-	-

\* These values may be field adjusted. Do not adjust Min Green and Extension times for phase 6 lower than what is shown.  
Min Green for all other phases should not be lower than 4 seconds.

PROPOSED	LEGEND	EXISTING
	Traffic Signal Head	
	Modified Signal Head	
	Pedestrian Signal Head With Push Button & Sign	
	Sign	
	Metal Strain Pole	
	Signal Pole with Sidewalk Guy	
	Inductive Loop Detector	
	Controller & Cabinet	
	Junction Box	
	2-in Underground Conduit	
	Right of Way	
	Directional Arrow	
	Type II Signal Pedestal	
	Curb Ramp	
	Guardrail	
	Construction Zone	
	Portable Barrier	
	Temporary Shoring	
	Microwave Detection Zone	
	Construction Zone Drums	
	Right "TURNING VEHICLES"	
	Yield "TO" Pedestrians Sign R10-15R	
	No Left Turn Sign R3-2	

Signal Upgrade  
Temporary Design 3 - TMP Phase III, Step 1

**stv**  
STV Engineers, Inc.  
900 West Trade St., Suite 715  
Charlotte, NC 28202  
(704) 372-1885  
NC License Number F-0991

Prepared for the Offices of:  
  
750 N. Greenfield Pkwy, Garner, NC 27529  
SCALE  
0 40  
1" = 40'

SR 1997 (Fayetteville Road)  
at  
SR 1984 (Linkhaw Road)

Division 6	Robeson County	Lumberton
PLAN DATE: Feb 2025	REVIEWED BY: H.M. Surti	
PREPARED BY: R.L. Aristondo	REVIEWED BY: T.M. Woody	
REVISIONS	INIT.	DATE

DOCUMENT NOT CONSIDERED FINAL UNLESS ALL SIGNATURES COMPLETED

SEAL  
NORTH CAROLINA  
PROFESSIONAL  
ENGINEER  
RENEE M. MOODY  
040329  
03/19/2025  
DATE  
SIC. INVENTORY NO. 06-0537T3