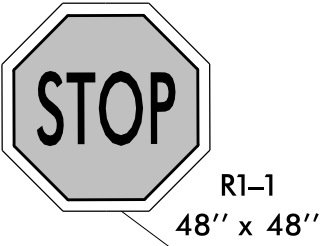


OVERHEAD SIGN ASSEMBLY 'C'
-L- STA.60+05.17

FLAGGER OPERATION TO MAINTAIN ACCESS FROM THE HIGHLAND TOWNES TOWN HOMES DURING OVER HEAD SIGN INSTALLATION. MAY UTILIZE LAW ENFORCEMENT.



ROSLYN DR.

MATCHLINE -L- STA.65+00 SEE SHEET TMP-14C

ICT #2
AWAY FROM TRAFFIC, CONSTRUCT PROPOSED OVERHEAD SIGNS BETWEEN 10:00 PM AND 6:00AM. REFER TO SHEET TMP-14A FOR DETOUR ROUTE.

FLAGGER OPERATION TO MAINTAIN ACCESS FROM THE HIGHLAND TOWNES TOWN HOMES DURING OVER HEAD SIGN INSTALLATION. MAY UTILIZE LAW ENFORCEMENT.

PREVIOUSLY CONSTRUCTED IN PHASE III STEP 1

TEMPORARY PAVEMENT MARKINGS

PREVIOUSLY CONSTRUCTED IN PHASE II

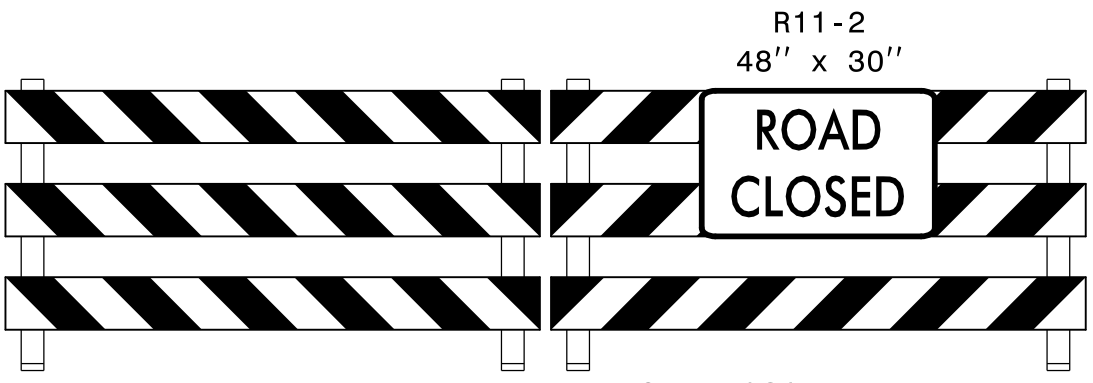
70' MAX. (TYP.)

PREVIOUSLY CONSTRUCTED IN PHASE I

460' LANE SHIFT TAPER

-L- STA. 60+60+/-

-L- FAYETTEVILLE RD. (SR 1997)

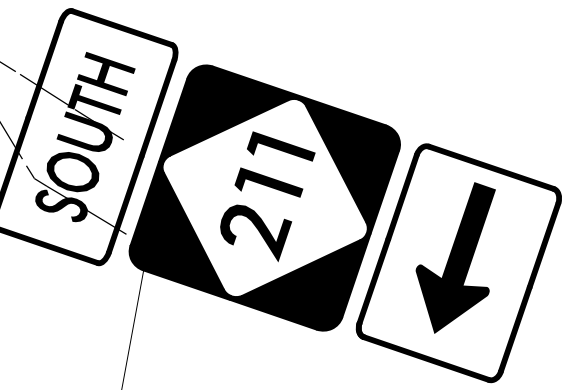


TYPE III BARRICADE(S)

F

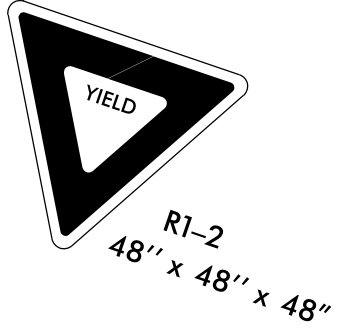
PREVIOUSLY CONSTRUCTED IN PHASE II

-Y3- HIGHLAND AVE.



55

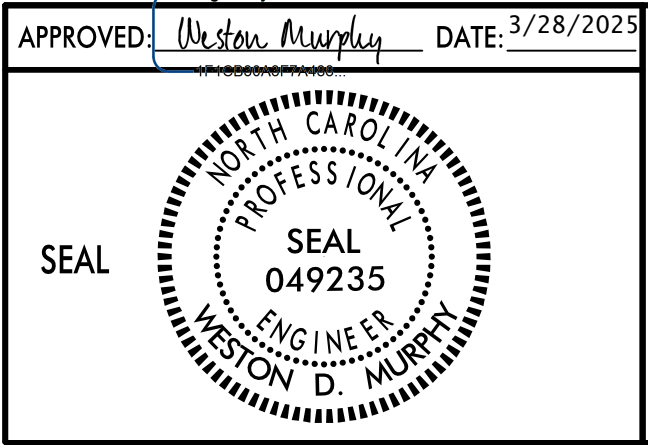
70' MAX. (TYP.)



-Y3- BOOMERANG DR.

PREVIOUSLY CONSTRUCTED IN PHASE I

DOCUMENT NOT CONSIDERED FINAL
UNLESS ALL SIGNATURES COMPLETED



PHASE III
STEP 4 OHS INSTALLATION
(FAYETTEVILLE RD.
SOUTHBOUND)