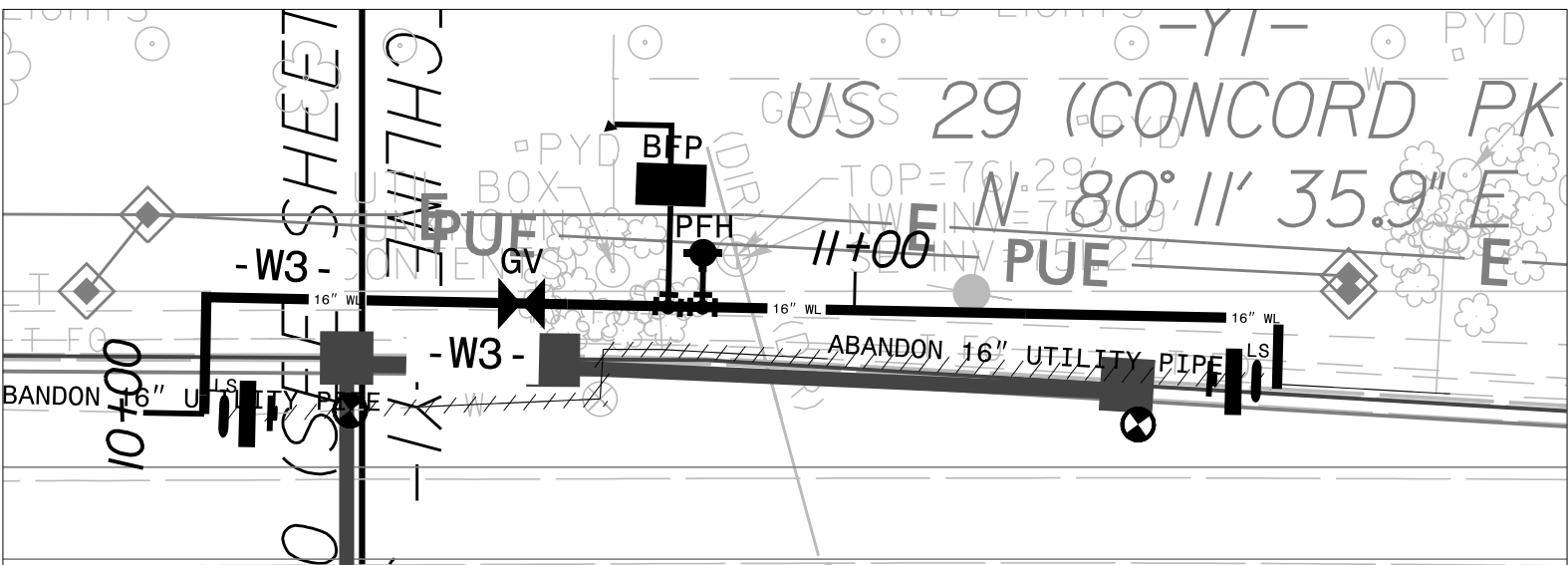


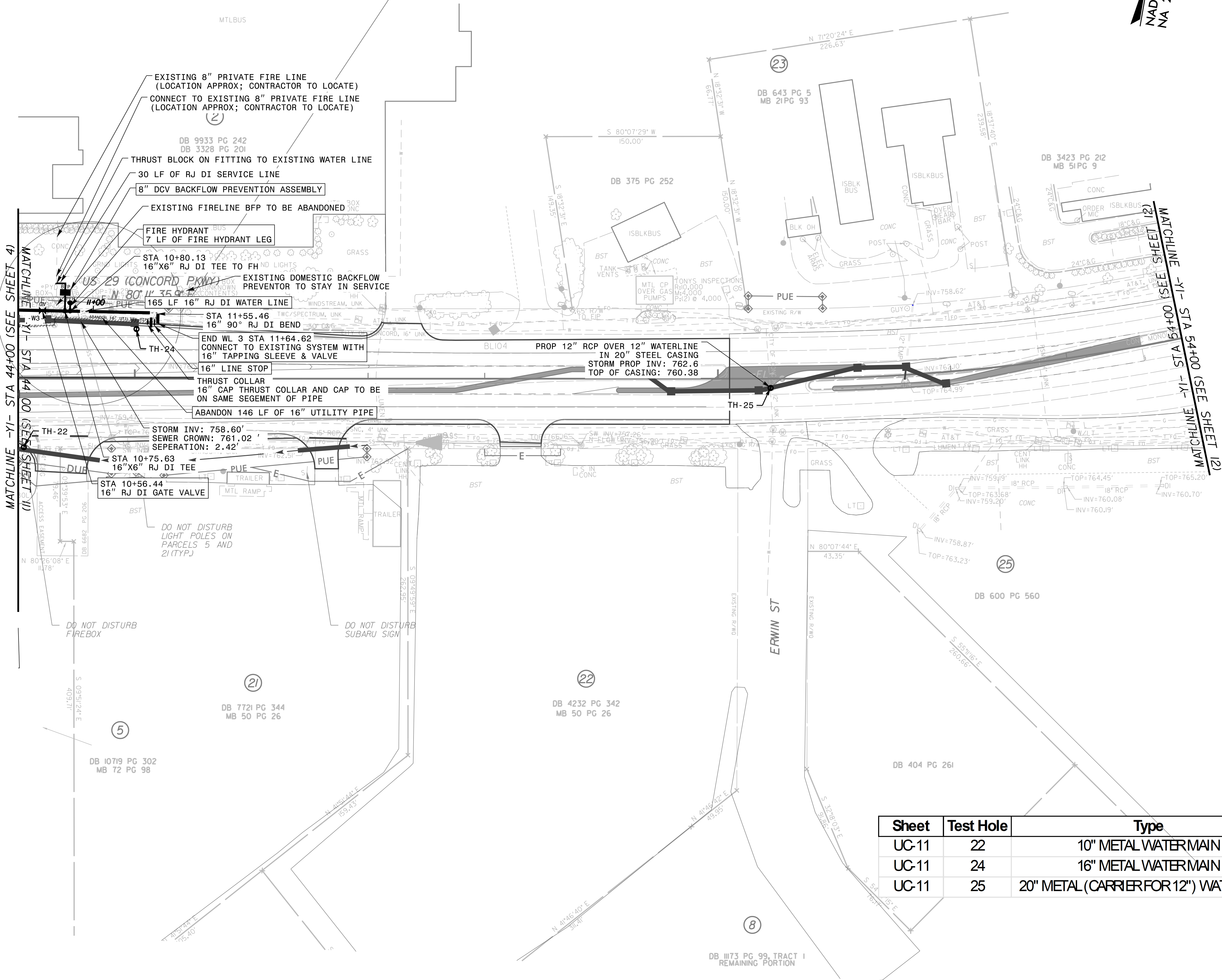
5/14/2019

REVISIONS

12/17/2025



DETAIL A: RELOCATION OF WATERLINE W3



- NOTES:
1. EXISTING BACKFLOW PREVENTION ASSEMBLIES AND ASSOCIATED SERVICE CONNECTIONS SHALL REMAIN IN SERVICE AT ALL TIMES. A SINGLE SHUTDOWN SHALL BE PERMITTED ON A DAY AND TIME ACCEPTABLE TO BOTH THE UTILITY OWNER AND THE USER TO RECONNECT THE SERVICE AND RELOCATE THE BACKFLOW PREVENTION ASSEMBLY.
  2. EXISTING FDC SHALL BE RELOCATED AND PLACED IN SERVICE WITH THE 8" DCV BACKFLOW PREVENTOR. FDC RELOCATION SHALL BE CONSIDERED INCIDENTAL TO THE RELOCATION OF THE 8" DCV BACKFLOW PREVENTOR.
  3. CONTRACTOR TO VERIFY STATUS AND CONFIGURATIONS OF EXISTING SERVICE CONNECTIONS WITH UTILITY OWNER AND USER PRIOR TO SETTING TEES OR MAKING TAPS FOR SERVICE OR BRANCH CONNECTIONS.

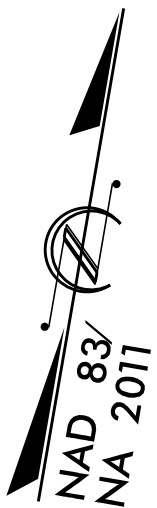
PROJECT NOTES:  
THRUST COLLAR TO BE CURED BEFORE INSTALLATION OF INSERTION VALVE OR LINE STOP.  
THRUST COLLAR TO BE ON SAME STRING OF PIPE AS LONG BODY SLEEVE.

Kimley»Horn

200 S TYRON STREET, SUITE 200  
CHARLOTTE, NC 28202

RIGHT-OF-WAY REV.

CONST. REV.



PROJECT REFERENCE NO.	SHEET NO.
U-5956	UC-11
UTILITY DESIGN ENGINEER	

Seal of Matthew S. Smith, Professional Engineer, No. 027670, State of North Carolina, expires 12/31/2025.

**DOCUMENT NOT CONSIDERED FINAL  
UNLESS ALL SIGNATURES COMPLETED**

Sheet	Test Hole	Type	Cover	Top Elev
UC-11	22	10" METAL WATERMAIN	4.01	756.1
UC-11	24	16" METAL WATERMAIN	4.78	758.12
UC-11	25	20" METAL (CARRIER FOR 12") WATERMAIN	5.51	760.38

