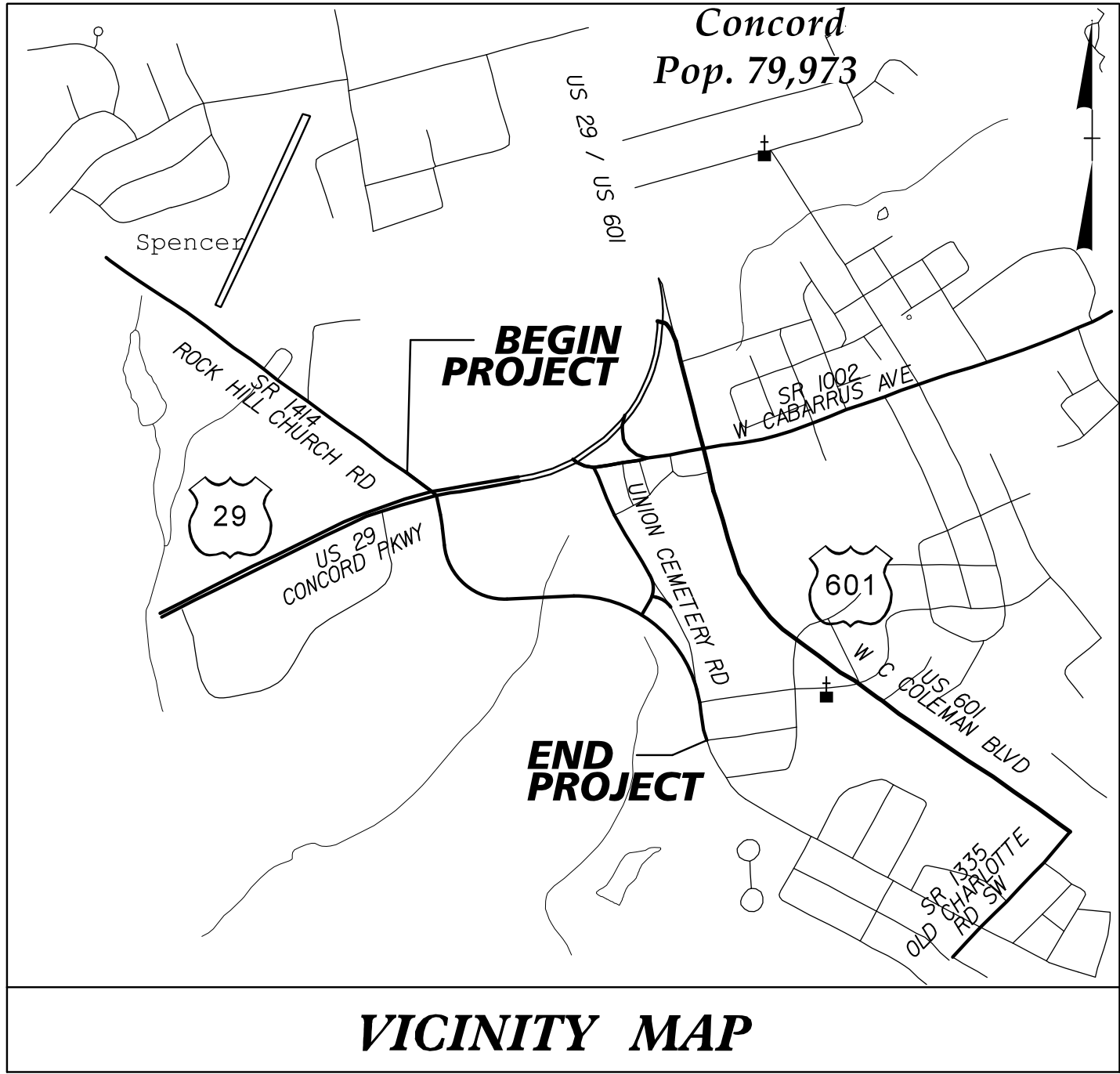


8/20/2025 2:07:12 PM susan.perrington K:\CHIL_LPR\M011036427 - U-5956 Union Cemetery\MSignal\K64 - Signal Design\1.0 U-5956-TSH.dgn

TIP PROJECT: U-5956



VICINITY MAP

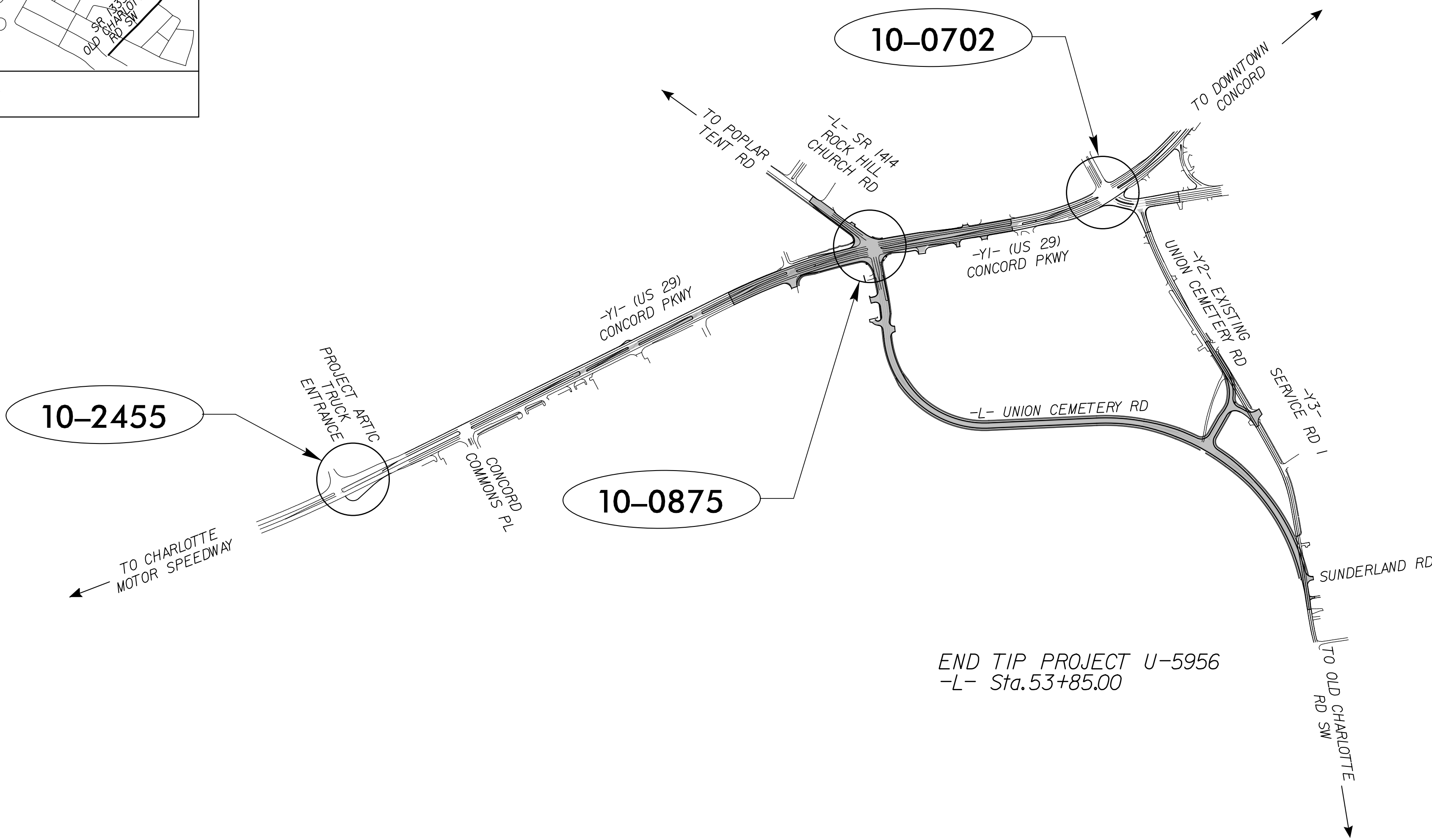
Note: Not to Scale

STATE OF NORTH CAROLINA
DIVISION OF HIGHWAYS

CABARRUS COUNTY

LOCATION: REALIGN UNION CEMETERY ROAD TO INTERSECT US 29 AT
ROCK HILL CHURCH ROAD AND CONSTRUCT IMPROVEMENTS
ALONG US 29 FROM 0.6 MILE WEST OF ROCK HILL CHURCH
ROAD TO JUST EAST OF ROCK HILL CHURCH ROAD

TYPE OF WORK: TRAFFIC SIGNALS AND COMMUNICATION PLANS



END TIP PROJECT U-5956
-L- Sta. 53+85.00

Project No.

Sheet No.

U-5956

Sig. 1.0

Sheet #

Reference #

Index of Plans

Location/Description

Sig. 1.0

Sig. 2.0-2.3

Sig. 3.0-6.3

Sig. 7.0-7.2

SCP 1-4

10-2455

10-0875

10-0702

Title Sheet

US 29 (Concord Parkway South) at Project Artic Truck Entrance

US 29 (Concord Parkway South) at Rock Hill Church Road/Union Cemetery Road

US 29 (Concord Parkway South) at SR 1002(Cabarrus Avenue)/The Village Shopping Center

Signal Communication and Splice Plans

TSMO SIGNAL CONTACT:

R. Nicholas Zinser, P.E.

WESTERN REGION SIGNALS ENGINEER

Keith M. Mims, P.E.

SIGNAL EQUIPMENT DESIGN ENGINEER

Gregg Green

SIGNAL COMMUNICATION ENGINEER

PLANS PREPARED BY:

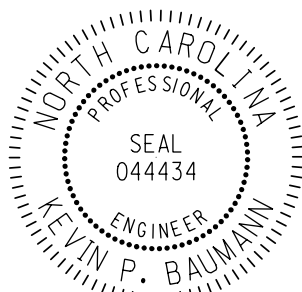
Kimley»Horn

421 Fayetteville Street, Suite 600
Raleigh, North Carolina 27601
PE NO. F-0102

© 2025

Kevin P. Baumann, P.E.

TRAFFIC SIGNAL ENGINEER

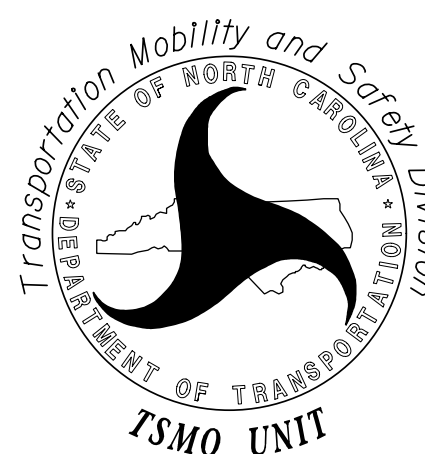


DocuSigned by:
Kevin P. Baumann, P.E.
8/21/2025

P.E.

Refer to Roadway Standard Drawings
NCDOT” dated January 2024 and
Standard Specifications for Roads
and Structures” dated January 2024.

Prepared for:



750 N.Greenfield Pkwy,Garner,NC 27529