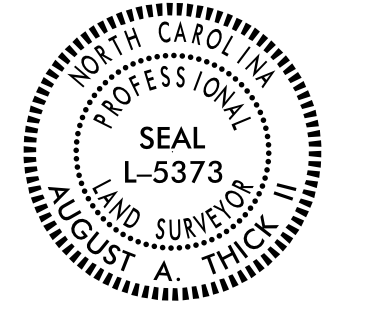


Location and Surveys



DOCUMENT NOT CONSIDERED FINAL
UNLESS ALL SIGNATURES COMPLETED

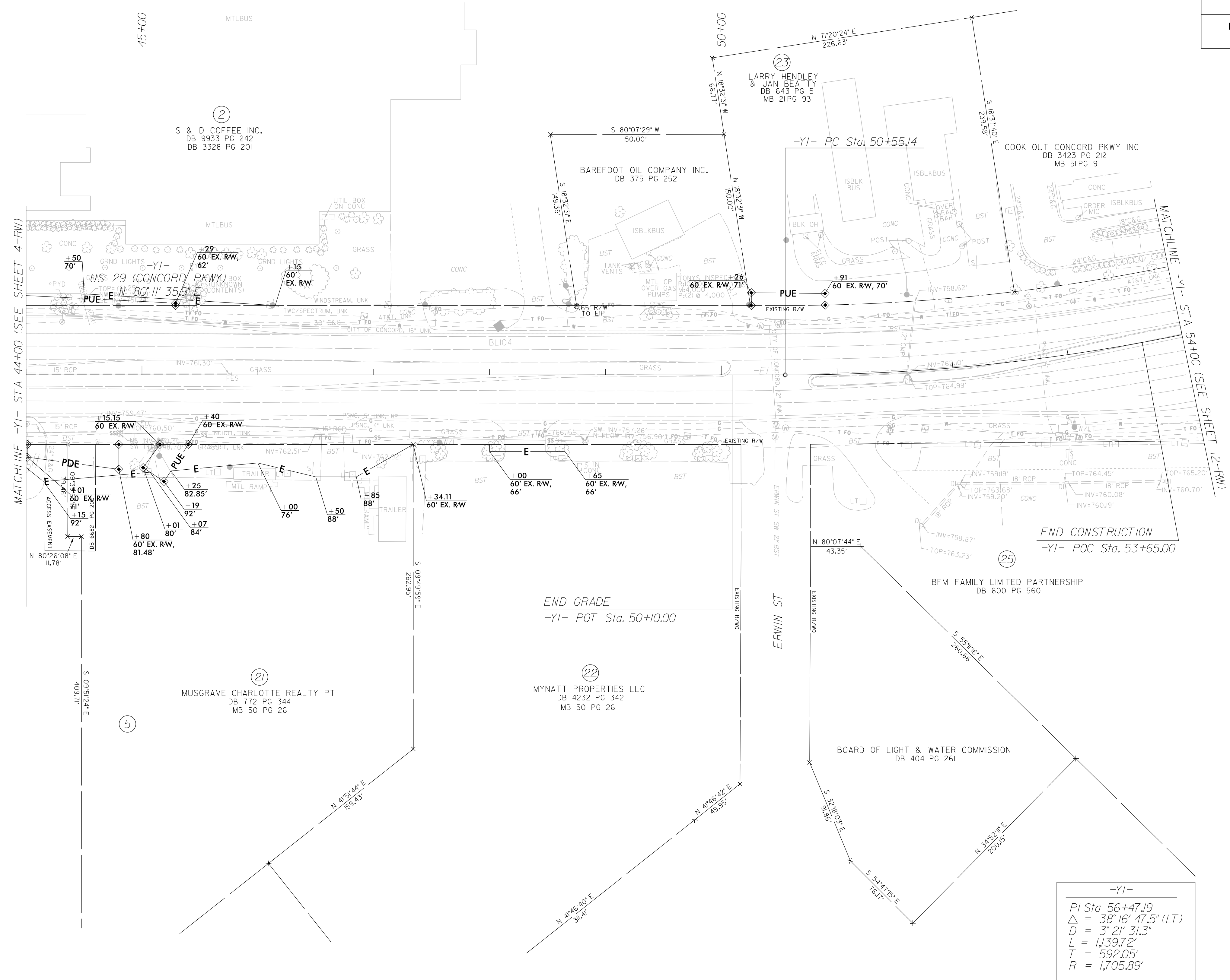
NOTES:

1. IF FURTHER INFORMATION REGARDING PROJECT CONTROL IS NEEDED PLEASE CONTACT THE LOCATION AND SURVEYS UNIT.
2. PROJECT CONTROL WAS ESTABLISHED USING GNSS, THE GLOBAL NAVIGATION SATELLITE SYSTEM.
3. RIGHT OF WAY MONUMENTATION ESTABLISHED OCTOBER TO DECEMBER 2022 .

I, August A. Thick, certify that the right of way and permanent easement monumentation for this project shown herein was completed under my direct and responsible charge from an actual survey made under my supervision; that all horizontal closures had a minimum ratio of precision of 1:10,000 (Class A). Field work was performed from October to November 2022 and all coordinates are based on NAD83/2011; That this survey was performed to meet the requirements of 21NCAC 56.1600 as applicable.

This day of December 7th 2022

Professional Land Surveyor L-5373



-YI-

PI Sta 56+47.19
 $\Delta = 38^{\circ} 16' 47.5''$ (LT)
 $D = 3^{\circ} 21' 31.3''$
 $L = 1,139.72'$
 $T = 592.05'$
 $R = 1,705.89'$

REVISIONS