

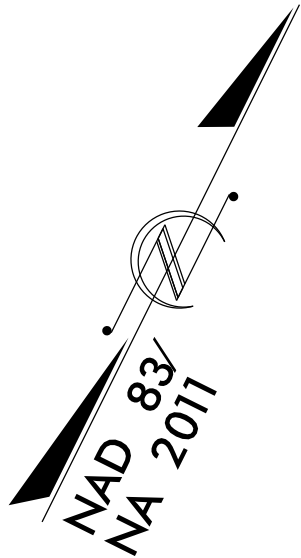
REVISIONS

NOTES:

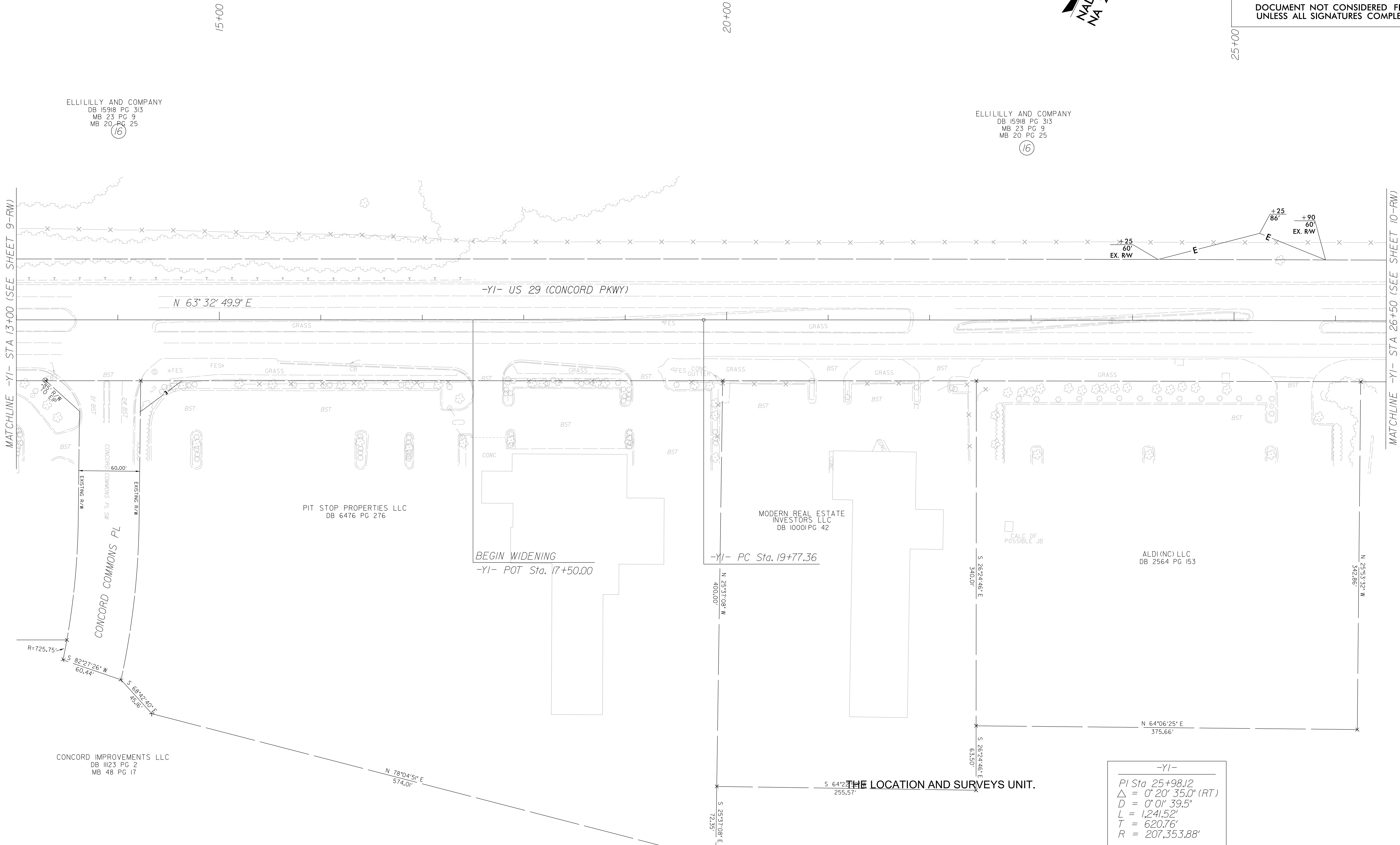
1. IF FURTHER INFORMATION REGARDING PROJECT CONTROL IS NEEDED PLEASE CONTACT
2. PROJECT CONTROL WAS ESTABLISHED USING GNSS, THE GLOBAL NAVIGATION SATELLITE SYSTEM.
3. RIGHT OF WAY MONUMENTATION ESTABLISHED OCTOBER TO DECEMBER 2022 .

I, August A. Thick, certify that the right of way and permanent easement monumentation for this project shown herein was completed under my direct and responsible charge from an actual survey made under my supervision; that all horizontal closures had a minimum ratio of precision of 1:10,000 (Class A). Field work was performed from October to November 2022 and all coordinates are based on NAD83/2011; That this survey was performed to meet the requirements of 21NCAC 56.1600 as applicable.

This day of December 7th 2022
August A. Thick
Professional Land Surveyor L-5373



PROJECT REFERENCE NO.	SHEET NO.
U5956	RW09A
Location and Surveys	
DOCUMENT NOT CONSIDERED FINAL UNLESS ALL SIGNATURES COMPLETED	



THE LOCATION AND SURVEYS UNIT.

-YI-
PI Sta 25+98.12
Δ = 0° 20' 35.0" (RT)
D = 0° 01' 39.5"
L = 1,241.52'
T = 620.76'
R = 207,353.88'