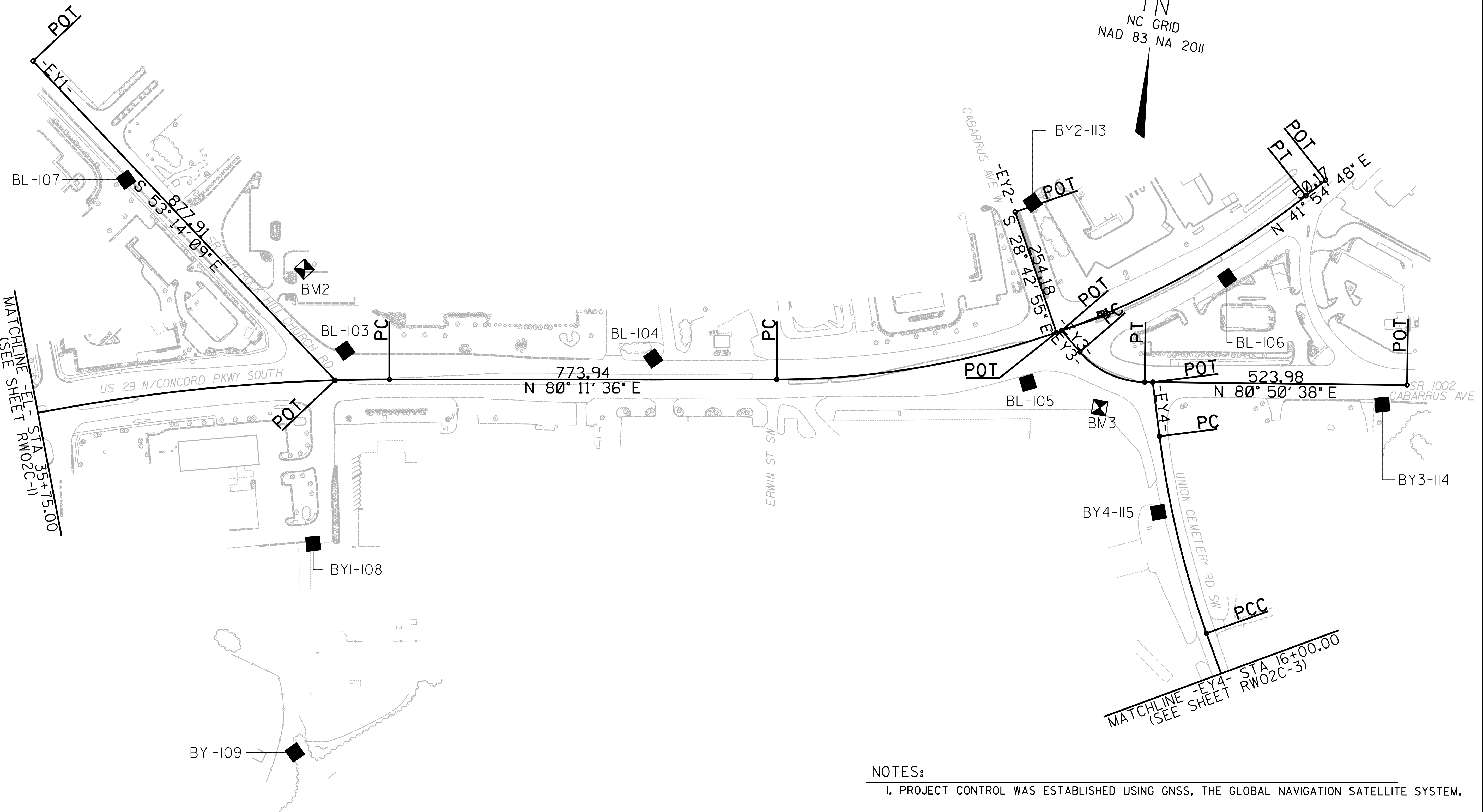


PROJECT REFERENCE NO.	SHEET NO.
U-5956	RW02C-2
Location and Surveys	

SURVEY CONTROL SHEET
W/ EXISTING CENTERLINE ALIGNMENTS PRIOR TO CONSTRUCTION



- NOTES:**
- PROJECT CONTROL WAS ESTABLISHED USING GNSS, THE GLOBAL NAVIGATION SATELLITE SYSTEM.
 - THE SURVEY CONTROL DATA FOR THIS PROJECT HAS BEEN COMPILED FROM VARIOUS SOURCES. IF FURTHER INFORMATION REGARDING PROJECT CONTROL IS NEEDED, PLEASE CONTACT THE LOCATION AND SURVEYS UNIT.