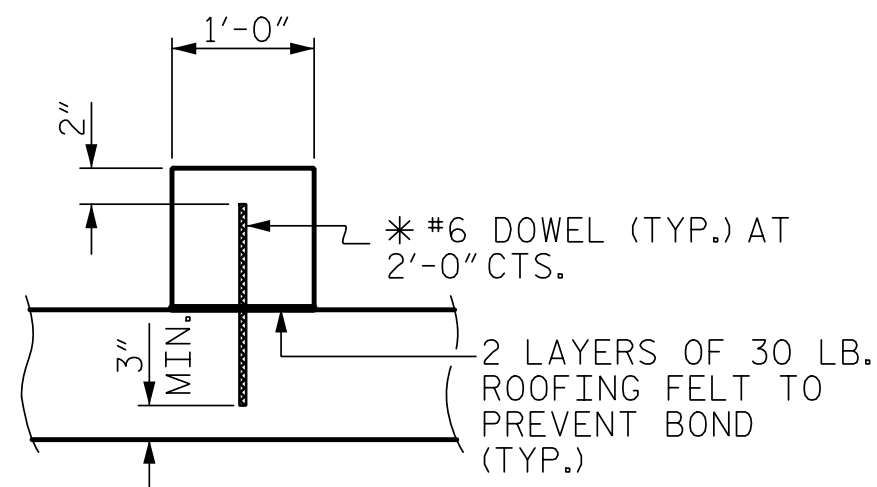
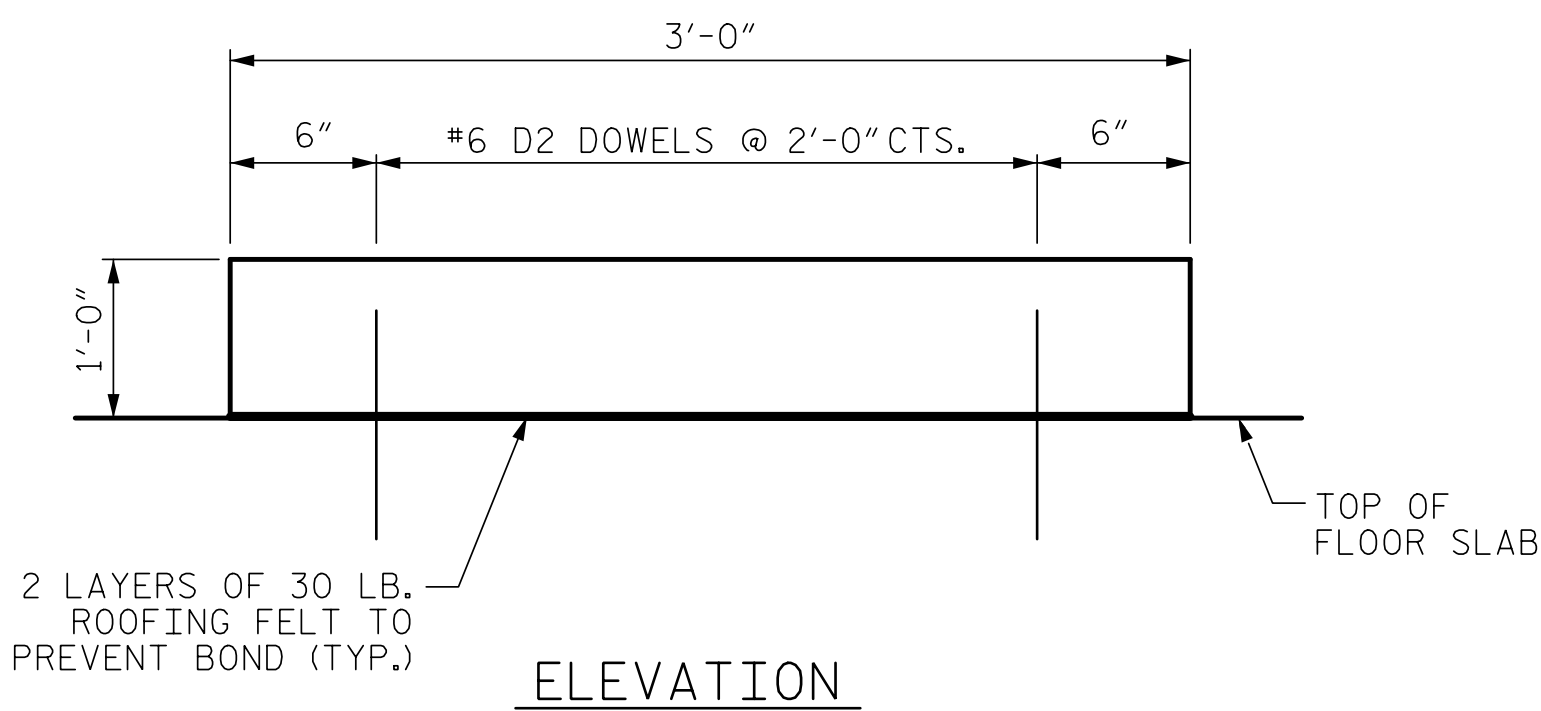
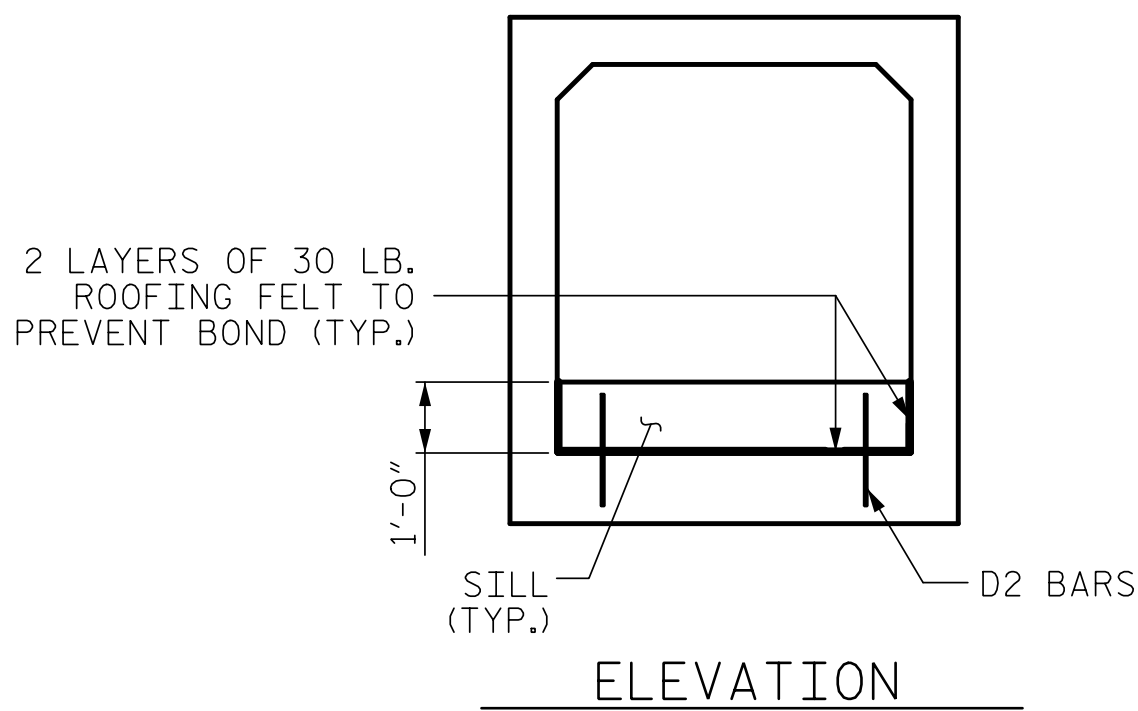


NOTES

MATERIAL EXCAVATED FROM THE EXISTING BED SHALL BE STOCKPILED FOR USE IN THE PROPOSED CULVERT EXTENSION. BED MATERIAL MAY BE SUPPLEMENTED WITH CLASS B RIP RAP AS NECESSARY. NATIVE MATERIAL BETWEEN SILLS IN THE CULVERT SHALL PROVIDE A CONTINUOUS LOW FLOW CHANNEL. NATIVE MATERIAL CONSISTS OF MATERIAL THAT IS EXCAVATED FROM THE STREAM OR FLOODPLAIN AT THE PROJECT SITE DURING CONSTRUCTION. NATIVE MATERIAL IS SUBJECT TO APPROVAL BY THE ENGINEER AND MAY BE SUBJECT TO PERMIT CONDITIONS.

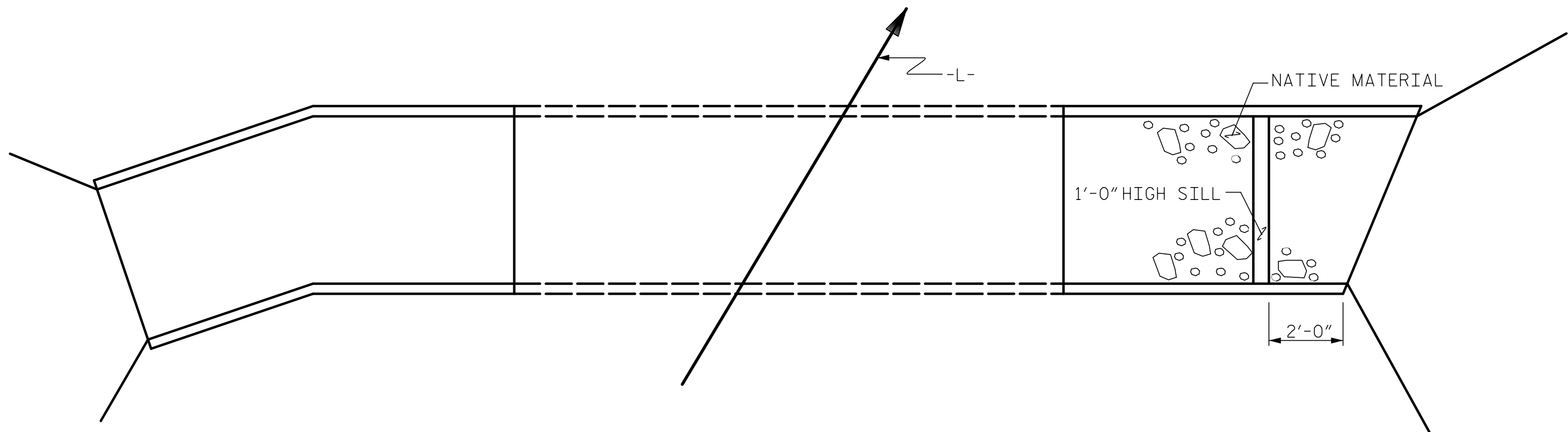
THE ENTIRE COST OF WORK REQUIRED TO PLACE EXCAVATED MATERIAL OR SUPPLEMENTAL MATERIAL AS SHOWN ON THE PLANS SHALL BE INCLUDED IN THE CONTRACT LUMP SUM PRICE BID FOR CULVERT EXCAVATION.

THE ENTIRE COST OF WORK REQUIRED TO CONSTRUCT THE SILLS SHALL BE INCLUDED IN THE VARIOUS PAY ITEMS.



\* DOWELS MAY BE PUSHED INTO GREEN CONCRETE AFTER SLAB HAS BEEN FLOAT FINISHED.

SILL DETAILS



PROJECT NO. R-5739  
NORTHAMPTON COUNTY  
STATION: 520+60.00 -L-

SHEET 8 OF 11



7/23/2025

DOCUMENT NOT CONSIDERED FINAL  
UNLESS ALL SIGNATURES COMPLETED

TGS ENGINEERS  
706 HILLSBOROUGH STREET  
SUITE 200  
RALEIGH, NC 27603  
PH (919) 773-8887  
CORP. LICENSE NO.: C-0275

STATE OF NORTH CAROLINA  
DEPARTMENT OF TRANSPORTATION  
RALEIGH

SINGLE  
CONCRETE BOX CULVERT  
LT & RT EXTENSIONS  
60° SKEW

REVISIONS						SHEET NO.
NO.	BY:	DATE:	NO.	BY:	DATE:	C6-8
1			3			TOTAL SHEETS
2			4			11

STR. #6

DRAWN BY : ZCS DATE : 8/22  
CHECKED BY : MGC DATE : 1/23