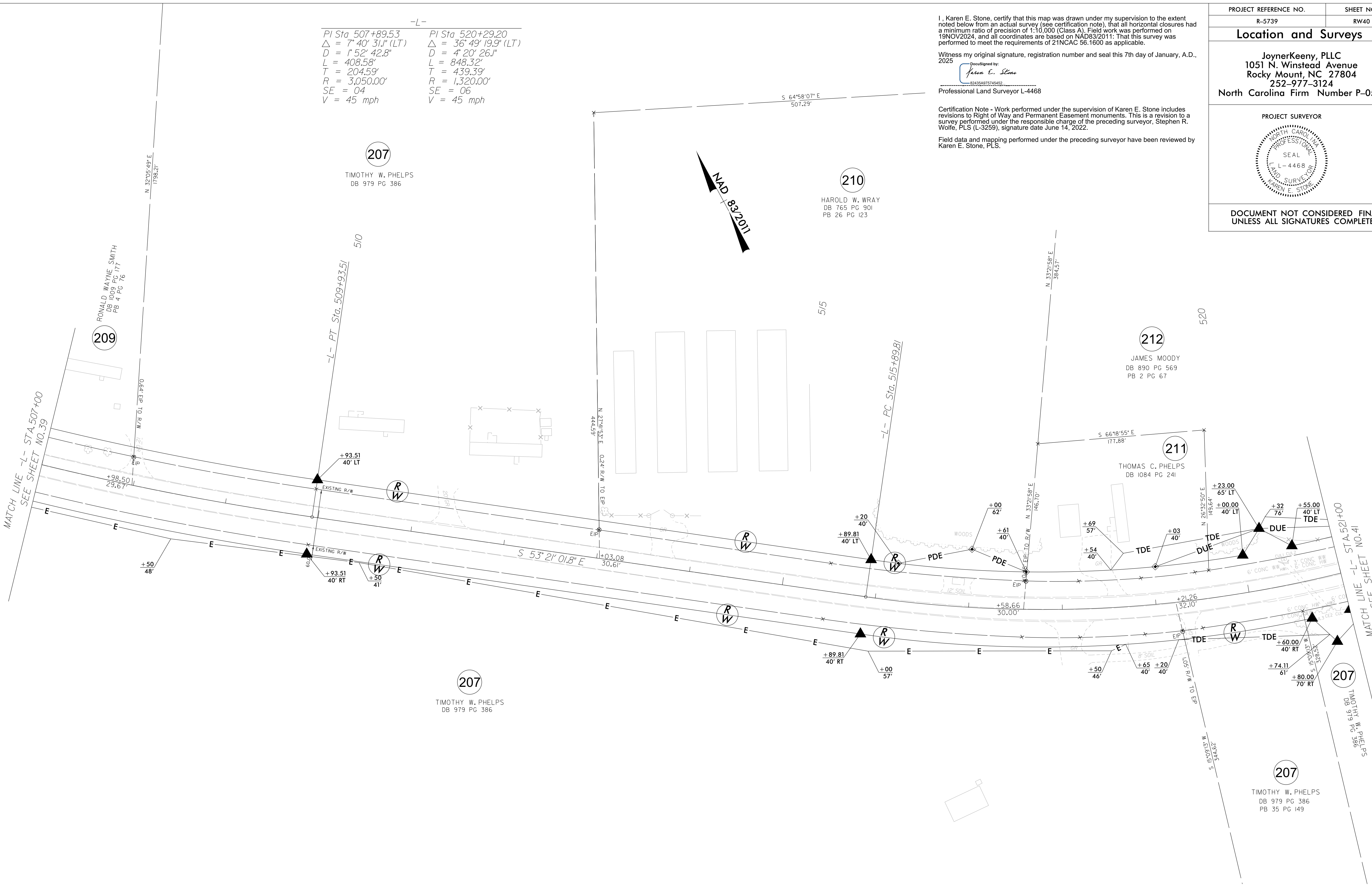


6/2/2025

25-MAN-2025-1756  
25-MAN-2025-1756-5K-B5739-CON-JKA-7-RDW STAKING SURVEY DELIVERABLES TO BE SENT+5739-1.s.rw40.dgn  
+Poythress AT JKA-021



NOTES:

1. IF FURTHER INFORMATION REGARDING PROJECT CONTROL IS NEEDED PLEASE CONTACT THE LOCATION AND SURVEYS UNIT.
2. PROJECT CONTROL WAS ESTABLISHED USING GNSS, THE GLOBAL NAVIGATION SATELLITE SYSTEM.
3. RIGHT OF WAY MONUMENTATION ESTABLISHED 14FEB2022 TO 19NOV2024 .