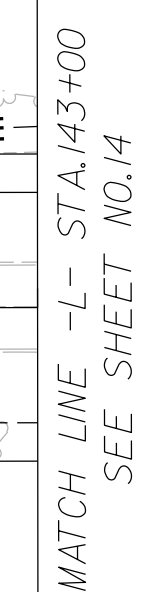


~~NAD 83/2011~~

Field data and mapping performed under the preceding surveyor have been reviewed by Karen E. Stone, PLS.

A circular professional seal for a North Carolina Professional Land Surveyor. The outer ring contains the text "NORTH CAROLINA" at the top and "KAREN E. STONE" at the bottom. The inner ring contains "PROFESSIONAL" at the top and "LAND SURVEYOR" at the bottom. In the center, the word "SEAL" is positioned above the license number "L-4468". The seal has a dotted border.



1. IF FURTHER INFORMATION REGARDING PROJECT CONTROL IS NEEDED PLEASE CONTACT THE LOCATION AND SURVEYS UNIT.
2. PROJECT CONTROL WAS ESTABLISHED USING GNSS, THE GLOBAL NAVIGATION SATELLITE SYSTEM.
3. RIGHT OF WAY MONUMENTATION ESTABLISHED 14FEB2022 TO 19NOV2024 .