

LOCATION: EXTENSION OF SR 1630 (BALTIMORE ROAD) TO A NEW
INTERCHANGE AT I-40



U-6187

TMP

001

NORTH CAROLINA

DEPARTMENT OF TRANSPORTATION

DAVIE COUNTY

C ZONE TRAFFIC CONTROL UNIT

NORTH CAROLINA

PROFESSIONAL

DESIGNED

SEAL

031533

ENGINEER

JOHN G. TOMASCH

3/21/2025

02/20/2025

PREPARED BY

vhb

YHB Engineering, Inc. P.C. (C-3705)

940 Main Campus Drive, Suite 500

Raleigh, NC 27605

TRANSPORTATION
MANAGEMENT PLAN
TITLE SHEET

CONTRACT: C205093

ROADWAY STANDARD DRAWINGS

THE FOLLOWING ROADWAY STANDARDS AS SHOWN IN "ROADWAY STANDARD DRAWINGS" - N.C. DEPARTMENT OF TRANSPORTATION - RALEIGH, N.C., DATED JANUARY 2024 MAY BE APPLICABLE TO THIS PROJECT AND BY REFERENCE HEREBY ARE CONSIDERED A PART OF THESE PLANS:

STD. NO.	TITLE
1101.01	WORK ZONE ADVANCE WARNING SIGNS
1101.02	TEMPORARY LANE CLOSURES
1101.03	TEMPORARY ROAD CLOSURES
1101.04	TEMPORARY SHOULDER CLOSURES
1101.05	WORK ZONE VEHICLE ACCESSES
1101.06	WARNING SIGNS FOR BLASTING ZONES
1101.11	TRAFFIC CONTROL DESIGN TABLES
1110.01	STATIONARY WORK ZONE SIGNS
1110.02	PORTABLE WORK ZONE SIGNS
1115.01	FLASHING ARROW BOARDS
1130.01	DRUMS
1135.01	CONES
1145.01	BARRICADES
1150.01	FLAGGERS
1160.01	TEMPORARY CRASH CUSHION
1165.01	TRUCK MOUNTED ATTENUATOR
1170.01	PORTABLE CONCRETE BARRIER
1180.01	SKINNY DRUMS
1205.01	PAVEMENT MARKINGS - LINE TYPES AND OFFSETS
1205.02	PAVEMENT MARKINGS - TWO-LANE AND MULTI-LANE ROADWAYS
1205.03	PAVEMENT MARKINGS - EXITS AND ENTRANCE RAMPS
1205.04	PAVEMENT MARKINGS - INTERSECTIONS
1205.05	PAVEMENT MARKINGS - TURN LANES
1205.06	PAVEMENT MARKINGS - LANE DROPS
1205.07	PAVEMENT MARKINGS - PEDESTRIAN CROSSWALKS
1205.08	PAVEMENT MARKINGS - SYMBOLS AND WORD MESSAGES
1205.09	PAVEMENT MARKINGS - PAINTED ISLANDS
1205.10	PAVEMENT MARKINGS - SCHOOL AREAS
1205.11	PAVEMENT MARKINGS - RAILROAD CROSSINGS
1205.12	PAVEMENT MARKINGS - BRIDGES
1205.13	PAVEMENT MARKINGS - LANE REDUCTIONS
1205.14	PAVEMENT MARKINGS - ROUNDABOUTS
1205.15	PAVEMENT MARKINGS - REDUCED CONFLICT INTERSECTIONS
1205.16	BICYCLE FACILITIES
1205.17	PAVEMENT MARKINGS - SIDE-BY-SIDE/ADJACENT ON/OFF RAMPS
1250.01	RAISED PAVEMENT MARKERS - INSTALLATION SPACING
1251.01	RAISED PAVEMENT MARKERS - PERMANENT AND TEMPORARY
1261.01	GUARDRAIL AND BARRIER DELINEATORS - INSTALLATION SPACING
1261.02	GUARDRAIL AND BARRIER DELINEATORS - TYPES AND MOUNTING
1262.01	GUARDRAIL END DELINEATION
1264.01	OBJECT MARKERS - TYPES
1264.02	OBJECT MARKERS - INSTALLATION
1266.01	RAISED PAVEMENT MARKERS TUBULAR MARKERS
1267.01	FLEXIBLE DELINEATORS - INSTALLATION
1267.02	FLEXIBLE DELINEATORS - SPACING TABLES
1267.03	FLEXIBLE DELINEATORS - INTERCHANGE PLACEMENT

LEGEND

GENERAL

DIRECTION OF TRAFFIC FLOW

DIRECTION OF PEDESTRIAN TRAFFIC FLOW

EXIST. PVMT.

NORTH ARROW

PROPOSED PVMT.

TEMP. SHORING (LOCATION PURPOSES ONLY)

WORK AREA

ONGOING CONSTRUCTION

WEDGING

SIGNALS

EXISTING

PROPOSED

TEMPORARY

PAVEMENT MARKINGS

EXISTING LINES

TEMPORARY LINES

TRAFFIC CONTROL DEVICES

BARRICADE (TYPE III)

CONE

DRUM SKINNY DRUM TUBULAR MARKER

TEMPORARY CRASH CUSHION

FLASHING ARROW BOARD

FLAGGER

LAW ENFORCEMENT

TRUCK MOUNTED ATTENUATOR (TMA)

CHANGEABLE MESSAGE SIGN

TEMPORARY SIGNING

PORTABLE SIGN

STATIONARY SIGN

STATIONARY OR PORTABLE SIGN

PAVEMENT MARKERS

CRYSTAL/CRYSTAL

CRYSTAL/RED

YELLOW/YELLOW

PAVEMENT MARKING SYMBOLS

PAVEMENT MARKING SYMBOLS

TEMPORARY PAVEMENT MARKINGS	
SYMBOL	DESCRIPTION
PAINT	
P1	WHITE EDGELINE (4")
P2	WHITE SOLID LANE LINE (4")
P3	10 FT. WHITE SKIP (4")
P4	3 FT. - 9 FT./SP WHITE MINISKIP (4")
P5	2 FT. - 6 FT./SP WHITE MINISKIP (4")
P10	YELLOW EDGELINE (4")
P13	YELLOW DOUBLE CENTER (4")
P14	2 FT. - 6 FT./SP YELLOW MINISKIP (4")
P20	WHITE EDGELINE (6")
P21	WHITE SOLID LANE LINE (6")
P22	10 FT. WHITE SKIP (6")
P23	3 FT. - 9 FT./SP WHITE MINISKIP (6")
P30	YELLOW EDGELINE (6")
P40	WHITE GORELINE (8")
P50	WHITE GORELINE (12")
P51	WHITE DIAGONAL (12")
P52	YELLOW DIAGONAL (12")
P61	WHITE STOPBAR (24")
P70	LEFT TURN ARROW
P71	RIGHT TURN ARROW
P72	STRAIGHT ARROW
P74	COMBO. RIGHT/STRAIGHT ARROW
P79	MERGE ARROW
P80	WRONG-WAY RAMP ARROW

U-6187

TMP001A

NORTH CAROLINA
DEPARTMENT OF TRANSPORTATION
DAVIE COUNTY

WORK ZONE TRAFFIC CONTROL UNIT

8/20/2025

PREPARED BY

VHB Engineering, Inc. P.C. (C-3705)
940 Main Campus Drive, Suite 500
Raleigh, NC 27605

ROADWAY STANDARD
DRAWINGS & LEGEND

TRANSPORTATION MANAGEMENT STRATEGIES

THE FOLLOWING LISTED WORK ZONE STRATEGIES ARE RECOMMENDED FOR INCLUSION WITHIN THIS TRANSPORTATION MANAGEMENT PLAN (TMP).

RECOMMENDED STRATEGIES:

TRAFFIC MANAGEMENT STRATEGIES:

- FULL ROADWAY CLOSURES
- LANE SHIFTS OR CLOSURES
- SHOULDER CLOSURES
- ONE-LANE, TWO WAY OPERATION (FLAGGING)
- NIGHT WORK
- WEEKEND WORK
- WORK HOUR RESTRICTIONS FOR PEAK TRAVEL
- OFF-SITE DETOURS / USE OF ALTERNATIVE ROUTES

WORK ZONE SAFETY & MOBILITY STRATEGIES:

- TEMPORARY TRAFFIC SIGNALS
- DIGITAL SPEED LIMIT SIGNS / VARIABLE SPEED LIMITS
- SEQUENTIAL LIGHTING
- PRESENCE LIGHTING

TRAFFIC / INCIDENT MANAGEMENT & SPEED ENFORCEMENT STRATEGIES:

- ITS FOR TRAFFIC MONITORING / MANAGEMENT (SMART WORKZONE)
- COORDINATION WITH STATE TRAFFIC OPERATIONS CENTER (STOC)
- COORDINATION WITH MEDIA
- LOCAL DETOUR ROUTES
- INCREASED PENALTIES FOR WORK ZONE VIOLATIONS

CONTRACTING & INNOVATIVE CONTRUCTION STRATEGIES:

- INTERMEDIATE CONTRACT TIMES / LIQUIDATED DAMAGES

GENERAL NOTES

CHANGES MAY BE REQUIRED WHEN PHYSICAL DIMENSIONS IN THE DETAIL DRAWINGS, STANDARD DETAILS, AND ROADWAY DETAILS ARE NOT ATTAINABLE TO MEET FIELD CONDITIONS OR RESULT IN DUPLICATE OR UNDESIRED OVERLAPPING OF DEVICES. MODIFICATION MAY INCLUDE: MOVING, SUPPLEMENTING, COVERING, OR REMOVAL OF DEVICES AS DIRECTED BY THE ENGINEER.

THE FOLLOWING GENERAL NOTES APPLY AT ALL TIMES FOR THE DURATION OF THE CONSTRUCTION PROJECT EXCEPT WHEN OTHERWISE NOTED IN THE PLAN OR DIRECTED BY THE ENGINEER.

TIME RESTRICTIONS

A) DO NOT CLOSE OR NARROW TRAVEL LANES AS FOLLOWS:

<u>ROAD NAME</u>	<u>DAY AND TIME RESTRICTIONS</u>
I-40	5:00 A.M. TO 6:00 P.M., MON. THRU SUN.
US 158	5:00 A.M. TO 9:00 A.M. & 4:00 P.M. TO 6:00 P.M., MON. THRU FRI.
BALTIMORE RD	5:00 A.M. TO 9:00 A.M. & 4:00 P.M. TO 6:00 P.M., MON. THRU FRI.

B) DO NOT CLOSE OR NARROW TRAVEL LANES DURING HOLIDAYS AND SPECIAL EVENTS AS FOLLOWS:

<u>ROAD NAME</u>
I-40, US 158, BALTIMORE ROAD

HOLIDAY

1. FOR ANY UNEXPECTED OCCURRENCE THAT CREATES UNUSUALLY HIGH TRAFFIC VOLUMES, AS DIRECTED BY THE ENGINEER.
2. FOR NEW YEAR'S, BETWEEN THE HOURS OF 5:00 A.M. DECEMBER 31st TO 6:00 P.M. JANUARY 2ND. IF NEW YEAR'S DAY IS ON A FRIDAY, SATURDAY, SUNDAY, OR MONDAY THEN UNTIL 6:00 P.M. THE FOLLOWING TUESDAY.
3. FOR EASTER, BETWEEN THE HOURS OF 5:00 A.M. THURSDAY AND 6:00 P.M. MONDAY.
4. FOR MEMORIAL DAY, BETWEEN THE HOURS OF 5:00 A.M. FRIDAY TO 6:00 P.M. TUESDAY.
5. FOR INDEPENDENCE DAY, BETWEEN THE HOURS OF 5:00 A.M. THE DAY BEFORE INDEPENDENCE DAY AND 6:00 P.M. THE DAY AFTER INDEPENDENCE DAY.

IF INDEPENDENCE DAY IS ON A FRIDAY, SATURDAY, SUNDAY OR MONDAY THEN BETWEEN THE HOURS OF 5:00 A.M. THE THURSDAY BEFORE INDEPENDENCE DAY AND 6:00 P.M. THE TUESDAY AFTER INDEPENDENCE DAY.

6. FOR LABOR DAY, BETWEEN THE HOURS OF 5:00 A.M. FRIDAY AND 6:00 P.M. TUESDAY.
7. FOR THANKSGIVING DAY, BETWEEN THE HOURS OF 5:00 A.M. TUESDAY TO 6:00 P.M. MONDAY.
8. FOR CHRISTMAS, BETWEEN THE HOURS OF 5:00 A.M. THE FRIDAY BEFORE THE WEEK OF CHRISTMAS DAY AND 6:00 P.M. THE FOLLOWING TUESDAY AFTER THE WEEK OF CHRISTMAS.

C) DO NOT CLOSE ROADS AS FOLLOWS:

<u>ROAD NAME</u>	<u>DAY AND TIME RESTRICTIONS</u>
I-40	5:00 A.M. TO 11:00 P.M., MON. THRU SUN.

D) DO NOT CONDUCT ANY HAULING OPERATIONS AGAINST THE FLOW OF TRAFFIC OF AN OPEN TRAVELWAY UNLESS THE HAULING OPERATION IS PROTECTED BY BARRIER OR GUARDRAIL OR AS DIRECTED BY THE ENGINEER.

LANE AND SHOULDER CLOSURE REQUIREMENTS

- E) REMOVE LANE CLOSURE DEVICES FROM THE LANE WHEN WORK IS NOT BEING PERFORMED BEHIND THE LANE CLOSURE OR WHEN A LANE CLOSURE IS NO LONGER NEEDED OR AS DIRECTED BY THE ENGINEER.
- F) WHEN PERSONNEL AND/OR EQUIPMENT ARE WORKING WITHIN 15 FT OF AN OPEN TRAVEL LANE, CLOSE THE NEAREST OPEN SHOULDER USING ROADWAY STANDARD DRAWING NO. 1101.04 UNLESS THE WORK AREA IS PROTECTED BY BARRIER OR GUARDRAIL OR A LANE CLOSURE IS INSTALLED.
- G) WHEN PERSONNEL AND/OR EQUIPMENT ARE WORKING WITHIN 5 FT OF AN OPEN TRAVEL LANE ON AN UNDIVIDED FACILITY, CLOSE THE NEAREST OPEN TRAVEL LANE USING ROADWAY STANDARD DRAWING NO. 1101.02 UNLESS THE WORK AREA IS PROTECTED BY BARRIER OR GUARDRAIL.

WHEN PERSONNEL AND/OR EQUIPMENT ARE WORKING WITHIN 10 FT OF AN OPEN TRAVEL LANE ON A DIVIDED FACILITY, CLOSE THE NEAREST OPEN TRAVEL LANE USING ROADWAY STANDARD DRAWING NO. 1101.02 UNLESS THE WORK AREA IS PROTECTED BY BARRIER OR GUARDRAIL.

- H) WHEN PERSONNEL AND/OR EQUIPMENT ARE WORKING WITHIN A LANE OF TRAVEL OF AN UNDIVIDED OR DIVIDED FACILITY, CLOSE THE LANE ACCORDING TO THE TRAFFIC CONTROL PLANS, ROADWAY STANDARD DRAWINGS, OR AS DIRECTED BY THE ENGINEER. CONDUCT THE WORK SO THAT ALL PERSONNEL AND/OR EQUIPMENT REMAIN WITHIN THE CLOSED TRAVEL LANE.
- I) DO NOT WORK SIMULTANEOUSLY WITHIN 15 FT ON BOTH SIDES OF AN OPEN TRAVELWAY, RAMP, OR LOOP WITHIN THE SAME LOCATION UNLESS PROTECTED WITH GUARDRAIL OR BARRIER.
- J) USE SEQUENTIAL FLASHING WARNING LIGHTS ON DRUMS USED FOR THE MERGING TAPERS OF NIGHTTIME LANE CLOSURES IN ACCORDANCE WITH SECTION 1140 IN THE STANDARD SPECIFICATIONS FOR ROADS AND STRUCTURES.
- K) NOTIFY THE NCDOT STATEWIDE TRANSPORTATION OPERATIONS CENTER (STOC) AT 877-627-7862 APPROXIMATELY 30 MINUTES PRIOR TO INSTALLING AND WITHIN 15 MINUTES AFTER REMOVING LANE CLOSURES ON INTERSTATES, FREEWAYS, CONTROLLED ACCESS FACILITIES, AND US ROUTES.
- L) PROVIDE TRAFFIC CONTROL FOR APPROPRIATE LANE CLOSURES FOR SURVEYING DONE BY THE DEPARTMENT.

U-6187

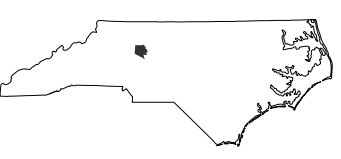
TMP

001B

NORTH CAROLINA

DEPARTMENT OF TRANSPORTATION

DAVIE COUNTY



WORK ZONE TRAFFIC CONTROL UNIT

SEAL


031533

JOHN C. TOWNSEND

ENGINEER

8/20/2025

PREPARED BY

vhb

VHB Engineering NC, P.C. (C-3705)
940 Main Campus Drive, Suite 500
Raleigh, NC 27605

TRANSPORTATION
MANAGEMENT
STRATEGIES, GENERAL
NOTES, AND LOCAL
NOTES

GENERAL NOTES (CONTINUED)

PAVEMENT EDGE DROP OFF REQUIREMENTS

M) BACKFILL AT A 6:1 SLOPE UP TO THE EDGE AND ELEVATION OF EXISTING PAVEMENT IN AREAS ADJACENT TO AN OPENED TRAVEL LANE THAT HAS AN EDGE OF PAVEMENT DROP-OFF AS FOLLOWS:

BACKFILL DROP-OFFS THAT EXCEED 2 INCHES ON ROADWAYS WITH POSTED SPEED LIMITS OF 45 MPH OR GREATER.

BACKFILL DROP-OFFS THAT EXCEED 3 INCHES ON ROADWAYS WITH POSTED SPEED LIMITS LESS THAN 45 MPH.

BACKFILL WITH SUITABLE COMPACTED MATERIAL, AS APPROVED BY THE ENGINEER, AT NO EXPENSE TO THE DEPARTMENT.

N) DO NOT EXCEED A DIFFERENCE OF 2 INCHES IN ELEVATION BETWEEN OPEN LANES OF TRAFFIC FOR NOMINAL LIFTS OF 1.5 INCHES. INSTALL ADVANCE WARNING "UNEVEN LANES" SIGNS (W8-11) 1,000 FT (≥ 55 MPH) / 500 FT (55 MPH) / 350 FT (40-50 MPH) / 200 FT (≤ 35 MPH) IN ADVANCE AND A MINIMUM OF EVERY HALF MILE THROUGHOUT THE UNEVEN AREA.

TRAFFIC PATTERN ALTERATIONS

O) NOTIFY THE ENGINEER THIRTY (30) CALENDAR DAYS PRIOR TO ANY TRAFFIC PATTERN ALTERATION.

SIGNING

P) INSTALL ADVANCE WORK ZONE WARNING SIGNS WHEN WORK IS WITHIN 40 FT FROM THE EDGE OF TRAVEL LANE AND NO MORE THAN THREE (3) DAYS PRIOR TO THE BEGINNING OF CONSTRUCTION.

Q) PROVIDE SIGNING AND DEVICES REQUIRED TO CLOSE THE ROAD ACCORDING TO THE ROADWAY STANDARD DRAWINGS AND TRAFFIC CONTROL PLANS.

PROVIDE SIGNING REQUIRED FOR THE OFF-SITE DETOUR ROUTE AS SHOWN IN THE TRAFFIC CONTROL PLANS.

R) COVER OR REMOVE ALL SIGNS AND DEVICES REQUIRED TO CLOSE THE ROAD WHEN ROAD CLOSURE IS NOT IN OPERATION.

COVER OR REMOVE ALL SIGNS REQUIRED FOR THE OFF-SITE DETOUR WHEN THE DETOUR IS NOT IN OPERATION.

S) ENSURE ALL NECESSARY SIGNING IS IN PLACE PRIOR TO ALTERING ANY TRAFFIC PATTERN.

T) INSTALL BLACK ON ORANGE "DIP" SIGNS (W8-2) AND/OR "BUMP" SIGNS (W8-1) 1,000 FT (≥ 55 MPH) / 500 FT (55 MPH) / 350 FT (40-50 MPH) / 200 FT (≤ 35 MPH) IN ADVANCE OF THE UNEVEN AREA, OR AS DIRECTED BY THE ENGINEER.

TRAFFIC BARRIER

U) INSTALL TEMPORARY BARRIER ACCORDING TO THE TRANSPORTATION MANAGEMENT PLANS A MAXIMUM OF TWO (2) WEEKS PRIOR TO BEGINNING WORK IN ANY LOCATION. ONCE TEMPORARY BARRIER IS INSTALLED AT ANY LOCATION PROCEED IN A CONTINUOUS MANNER TO COMPLETE THE PROPOSED WORK IN THAT LOCATION UNLESS OTHERWISE STATED IN THE TRANSPORTATION MANAGEMENT PLANS OR AS DIRECTED BY THE ENGINEER.

DO NOT PLACE BARRIER DIRECTLY ON ANY SURFACE OTHER THAN ASPHALT OR CONCRETE.

ONCE TEMPORARY BARRIER IS INSTALLED AT ANY LOCATION AND NO WORK IS PERFORMED BEHIND THE TEMPORARY BARRIER FOR A PERIOD LONGER THAN TWO (2) MONTHS, REMOVE / RESET TEMPORARY BARRIER AT NO COST TO THE DEPARTMENT UNLESS OTHERWISE STATED IN THE TRANSPORTATION MANAGEMENT PLANS, TEMPORARY BARRIER IS PROTECTING A HAZARD, OR AS DIRECTED BY THE ENGINEER.

INSTALL TEMPORARY BARRIER WITH THE TRAFFIC FLOW BEGINNING WITH THE UPSTREAM SIDE OF TRAFFIC. REMOVE TEMPORARY BARRIER AGAINST THE TRAFFIC FLOW BEGINNING WITH THE DOWNSTREAM SIDE OF TRAFFIC.

INSTALL AND SPACE DRUMS NO GREATER THAN TWICE THE POSTED SPEED LIMIT (MPH) TO CLOSE OR KEEP THE SECTION OF THE ROADWAY CLOSED UNTIL THE TEMPORARY BARRIER CAN BE PLACED OR AFTER THE TEMPORARY BARRIER IS REMOVED.

V) PROTECT THE APPROACH END OF MOVABLE/PORTABLE CONCRETE BARRIER AT ALL TIMES DURING THE INSTALLATION AND REMOVAL OF THE BARRIER BY EITHER A TRUCK MOUNTED ATTENUATOR (MAXIMUM 72 HOURS) OR A TEMPORARY CRASH CUSHION.

PROTECT THE APPROACH END OF MOVABLE/PORTABLE CONCRETE BARRIER FROM ONCOMING TRAFFIC AT ALL TIMES BY A TEMPORARY CRASH CUSHION UNLESS THE APPROACH END OF MOVABLE/PORTABLE CONCRETE BARRIER IS OFFSET FROM ONCOMING TRAFFIC AS FOLLOWS OR AS SHOWN IN THE PLANS: (SEE ALSO 1101.05)

<u>POSTED SPEED LIMIT</u>	<u>MINIMUM OFFSET</u>
40 OR LESS	15 FT
45 – 50	20 FT
55	25 FT
60 MPH or HIGHER	30 FT

TRAFFIC CONTROL DEVICES

W) WHEN LANE CLOSURES ARE NOT IN EFFECT SPACE CHANNELIZING DEVICES IN WORK AREAS NO GREATER IN FEET THAN TWICE THE POSTED SPEED LIMIT

(MPH) EXCEPT, 10 FT ON-CENTER IN RADII, AND 3 FT OFF THE EDGE OF AN OPEN TRAVELWAY. REFER TO STANDARD SPECIFICATIONS FOR ROADS AND STRUCTURES SECTIONS 1130 (DRUMS), 1135 (CONES) AND 1180 (SKINNY DRUMS) FOR ADDITIONAL REQUIREMENTS.

X) PLACE TYPE III BARRICADES, WITH "ROAD CLOSED" SIGN R11-2 ATTACHED, OF SUFFICIENT LENGTH TO CLOSE ENTIRE ROADWAY.

Y) PLACE ADDITIONAL SETS OF THREE CHANNELIZING DEVICES PERPENDICULAR TO THE EDGE OF TRAVELWAY ON 1,000 FT (≥ 55 MPH) / 500 FT (55 MPH) / 350 FT (40-50 MPH) / 200 FT (≤ 35 MPH) CENTERS WHEN UNOPENED LANES ARE CLOSED TO TRAFFIC.

PAVEMENT MARKINGS AND MARKERS

Z) INSTALL TEMPORARY PAVEMENT MARKINGS AND TEMPORARY PAVEMENT MARKERS ON INTERIM LAYERS OF PAVEMENT AS FOLLOWS:

<u>ROAD NAME</u>	<u>MARKING</u>	<u>MARKER</u>
I-40	PAINT	TEMPORARY RAISED
US-158	PAINT	TEMPORARY RAISED
BALTIMORE ROAD	PAINT	TEMPORARY RAISED
ALL OTHERS	PAINT	NONE

AA) PLACE ONE APPLICATION OF PAINT FOR TEMPORARY TRAFFIC PATTERNS. PLACE A SECOND APPLICATION OF PAINT SIX (6) MONTHS AFTER THE INITIAL APPLICATION AND EVERY SIX MONTHS AS DIRECTED BY THE ENGINEER.

BB) TIE PROPOSED PAVEMENT MARKING LINES TO EXISTING PAVEMENT MARKING LINES.

CC) REMOVE/REPLACE ANY CONFLICTING/DAMAGED PAVEMENT MARKINGS AND MARKERS BY THE END OF EACH DAY’S OPERATION.

DD) TRACE THE PROPOSED MONOLITHIC ISLAND LOCATIONS WITH PROPER COLOR PAVEMENT MARKINGS PRIOR TO INSTALLATION. PLACE SKINNY DRUMS TO DELINEATE ANY PROPOSED MONOLITHIC ISLANDS BEFORE INSTALLATION.

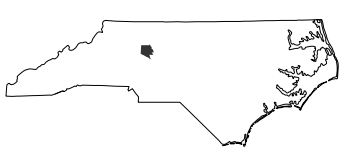
MISCELLANEOUS

EE) LAW ENFORCEMENT SHALL BE USED TO MAINTAIN TRAFFIC THROUGH THE WORK AREA AND/OR INTERSECTIONS AS DIRECTED BY THE ENGINEER.

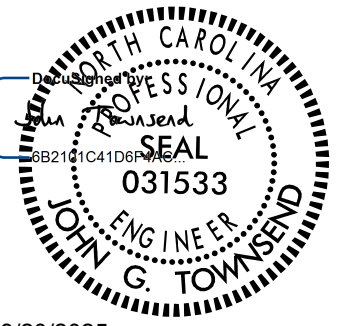
U-6187

TMP001C

NORTH CAROLINA
DEPARTMENT OF TRANSPORTATION
DAVIE COUNTY




WORK ZONE TRAFFIC CONTROL UNIT



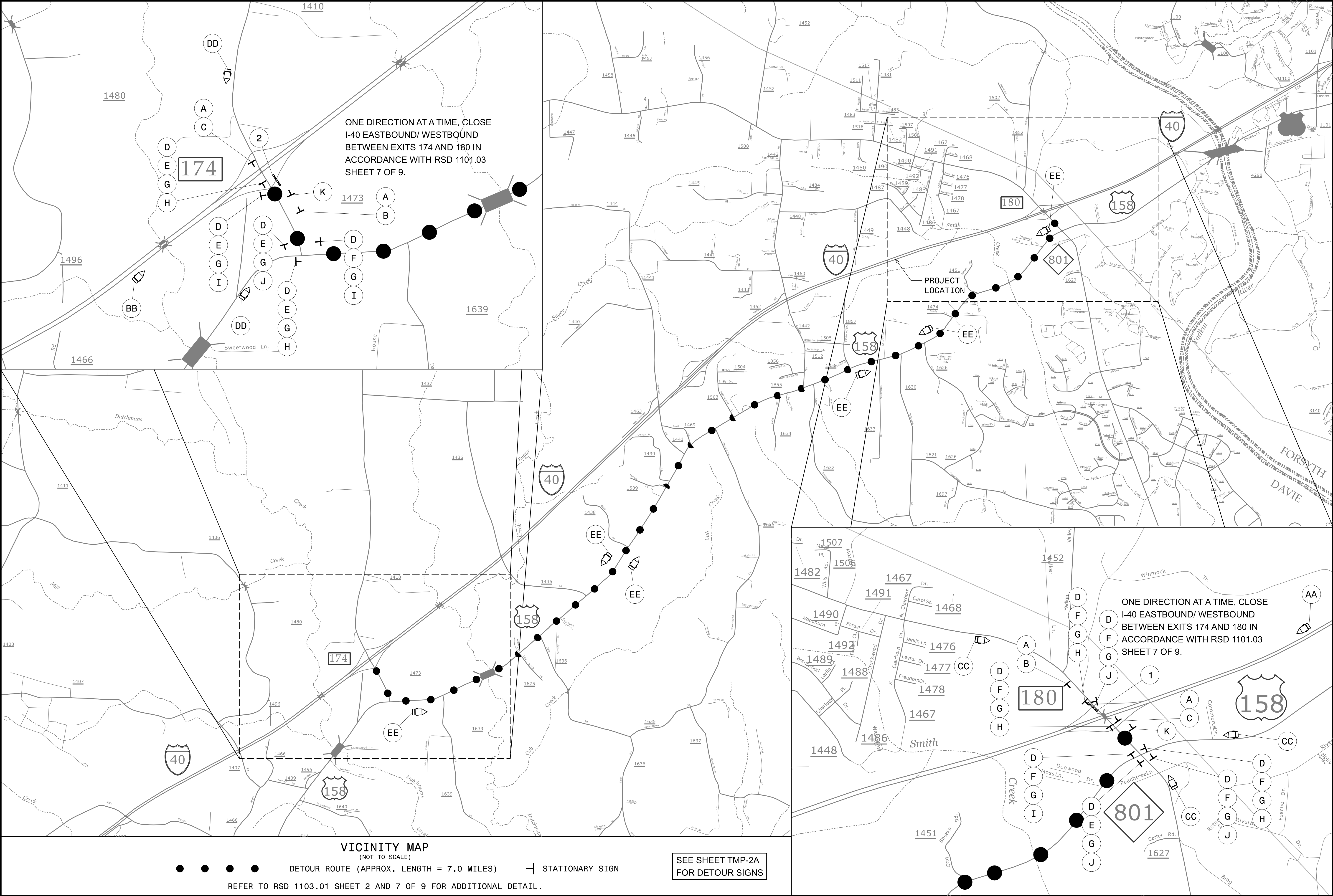
8/20/2025

PREPARED BY


vhb Engineering NC, P.C. (C-3705)
940 Main Campus Drive, Suite 500
Raleigh, NC 27605

TRANSPORTATION
MANAGEMENT
STRATEGIES, GENERAL
NOTES, AND LOCAL
NOTES

11/14/23



U-6187

TMP002

NORTH CAROLINA

DEPARTMENT OF TRANSPORTATION

DAVIE COUNTY

WORK ZONE TRAFFIC CONTROL UNIT

8/20/2025

PREPARED BY

vhb
VHB Engineering NC, P.C. (C-3705)
940 Main Campus Drive, Suite 500
Raleigh, NC 27605

DETOUR ROUTE

CLOSURE OF I-40

BETWEEN EXIT 174 AND

EXIT 180

SHEET 1 OF 2



A



B



C



D



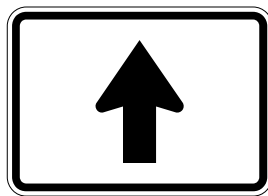
E



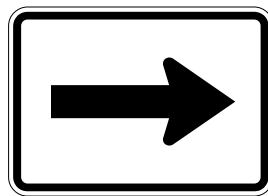
F



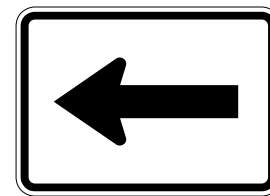
G



H



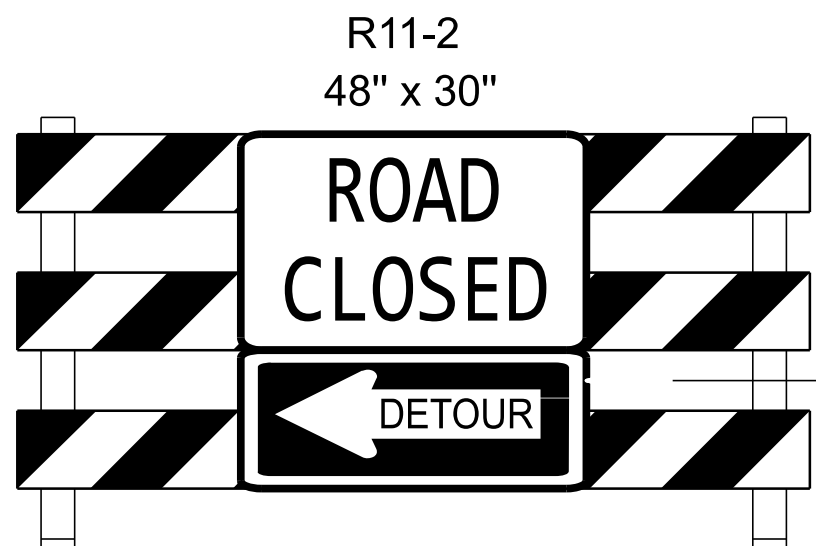
I



J

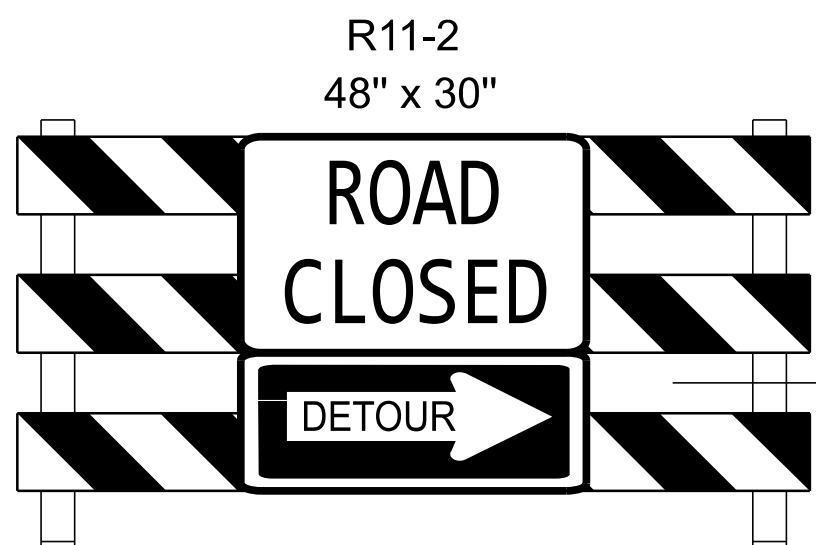


K



TYPE III BARRICADE

1



TYPE III BARRICADE

2

MESSAGE PRIOR TO CLOSURE:

MESSAGE NO. 1	MESSAGE NO. 2
RST AREA WILL BE CLOSED	STARTING (DAY) (TIME)

CHANGEABLE MESSAGE SIGN

AA

MESSAGE PRIOR TO CLOSURE:

MESSAGE NO. 1	MESSAGE NO. 2
RST AREA WILL BE CLOSED	STARTING (DAY) (TIME)

CHANGEABLE MESSAGE SIGN

BB

MESSAGE NO. 1	MESSAGE NO. 2
I-40 W ON RAMP CLOSED	FOLLOW POSTED DETOUR

CHANGEABLE MESSAGE SIGN

CC

MESSAGE NO. 1	MESSAGE NO. 2
I-40 (E/W) CLOSED	FOLLOW POSTED DETOUR

CHANGEABLE MESSAGE SIGN

EE

MESSAGE DURING CLOSURE:

MESSAGE NO. 1	MESSAGE NO. 2
REST AREA CLOSED	NEXT RST AREA 46 MI

CHANGEABLE MESSAGE SIGN

AA

MESSAGE DURING CLOSURE:

MESSAGE NO. 1	MESSAGE NO. 2
REST AREA CLOSED	NEXT RST AREA 64 MI

CHANGEABLE MESSAGE SIGN

BB

MESSAGE NO. 1	MESSAGE NO. 2
I-40 E ON RAMP CLOSED	FOLLOW POSTED DETOUR

CHANGEABLE MESSAGE SIGN

DD

ADDITIONAL CMS FOR CONFIRMATION
ALONG DETOUR ROUTE. LOCATION
AND MESSAGE TO BE COORDINATED
WITH THE DTE.

SEE SHEET TMP-2
FOR DETOUR

U-6187

TMP002A

NORTH CAROLINA
DEPARTMENT OF TRANSPORTATION
DAVIE COUNTY

WORK ZONE TRAFFIC CONTROL UNIT

PROFESSIONAL
SEAL
031533
JOHN C. TOWNSEND
ENGINEER

8/20/2025

PREPARED BY

VHB Engineering NC, P.C. (C-3705)
540 Main Campus Drive, Suite 500
Raleigh, NC 27605

DETOUR ROUTE
CLOSURE OF I-40
BETWEEN EXIT 174 AND
EXIT 180
SHEET 2 OF 2

NOTES:

REPLACE MARKINGS AND RETURN TO THE CURRENT TRAFFIC PATTERN AT THE END OF EACH WORK PERIOD UNLESS OTHERWISE NOTED IN THE PHASING OR DIRECTED BY THE ENGINEER.

MAINTAIN VEHICULAR ACCESS TO ALL RESIDENCES AND BUSINESSES DURING THE LIFE OF THE CONTRACT UNLESS OTHERWISE NOTED IN THE PHASING OR DIRECTED BY THE ENGINEER.

COMPLETE ANY PROPOSED WIDENING IN SUCH A MANNER THAT PONDING OF WATER WILL NOT OCCUR IN THE TRAVEL LANE. THIS MAY REQUIRE A COMBINATION OF INSTALLATION OF PROPOSED PIPES, TEMPORARY PIPES, STEEL PLATES, TEMPORARY MEDIAN, AND OUTSIDE DITCHES. PROVIDE WEDGING AS REQUIRED TO PROMOTE POSITIVE DRAINAGE AND SMOOTH TRANSITIONS.

PAVE PROPOSED CONSTRUCTION UP TO BUT NOT INCLUDING THE FINAL LAYER OF SURFACE COURSE, IN ALL PHASES UNTIL STATED TO INSTALL FINAL LAYER IN PHASING.

THE TERM RSD REFERS TO ROADWAY STANDARD DRAWINGS.

NOTE: PHASE II CAN BE COMPLETED INDEPENDENT OF PHASE I.

PHASE I (I-40, NEW INTERCHANGE, BALTIMORE ROAD NORTH OF US 158)

STEP 1: USING RSD 1101.01 (SHEETS 1 THRU 3), INSTALL ADVANCE WARNING SIGNS ON -Y2- (I-40).

STEP 2: USING RSD 1101.02 (SHEET 4 OF 19), REMOVE THE EXISTING PAVEMENT MARKINGS AND MEDIAN RUMBLE STRIPS AND INSTALL TEMPORARY PAVEMENT MARKINGS/MARKERS TO SHIFT TRAFFIC IN BOTH DIRECTIONS 6 FEET TOWARD THE MEDIAN AND INSTALL ANCHORED AND UNANCHORED PORTABLE CONCRETE BARRIER WITH DRAINAGE SLOTS AND CRASH CUSHIONS ON THE OUTSIDE -Y2- (I-40) AS SHOWN ON SHEETS TMP-4 THRU TMP-6.

STEP 3: AWAY FROM TRAFFIC AND BEHIND PORTABLE CONCRETE BARRIER, RELOCATE THE EXISTING “BERMUDA RUN 1 ¼ MI”, “DAVIE MEDICAL CENTER”, AND LOGO SIGNS (901) ON TEMPORARY SUPPORTS AND COMPLETE CONSTRUCTION OF THE END BENTS OF THE -L- (BALTIMORE ROAD) STRUCTURE OVER -Y2- (I-40) AND COMPLETE THE CONSTRUCTION OF THE OUTSIDES OF -Y2- (I-40) AND -L- (BALTIMORE ROAD), -LPB-, -RPB-, -RPC-, AND -RPD- WITHIN THE CLEAR ZONE OF -Y2- (I-40). AWAY FROM TRAFFIC AND BEHIND PORTABLE CONCRETE BARRIER AND USING RSD 1101.02 (SHEET 4 OF 9) AS NEEDED, INSTALL OVERHEAD STRUCTURE ASSEMBLY “A” AND COVER SIGNS 2A AND 2B. REMOVE THE EXISTING “BERMUDA RUN 1 ¼ MI” SIGN AFTER SIGNS 1A AND 1B HAVE BEEN MOUNTED ON OVERHEAD SIGN ASSEMBLY “A”. USING RSD 1101.02 (SHEET 4 OF 9) AS NEEDED, INSTALL AND COVER SIGNS 101A/A, 102A/B, 103, 104A/B AND 105A/B. AWAY FROM TRAFFIC, CONTINUE CONSTRUCTION OF -L- (BALTIMORE ROAD) NORTH OF US 158, -LPB-, -RPB-, -RPC-, AND -RPD- OUTSIDE THE CLEAR ZONE OF -Y2- (I-40) AND -Y1- (US 158).

STEP 4: UPON COMPLETION OF THE END BENTS AND RAMP TIES, INSTALL DRUMS AND TYPE III BARRICADES TO CLOSE THE RAMPS. USING RSD 1101.02 (SHEET 4 OF 19), REMOVE THE ANCHORED AND UNANCHORED PORTABLE CONCRETE BARRIER WITH DRAINAGE SLOTS AND CRASH CUSHIONS INSTALLED ON THE OUTSIDE OF -Y2-

PHASING

(I-40) IN STEP 2, REMOVE THE TEMPORARY PAVEMENT MARKINGS/MARKERS AND INSTALL TEMPORARY PAVEMENT MARKINGS AND MARKERS TO SHIFT TRAFFIC IN BOTH DIRECTIONS 6 FEET BACK TO THE ORIGINAL PATTERN AND RESET THE ANCHORED AND UNANCHORED PORTABLE CONCRETE BARRIER WITH DRAINAGE SLOTS ALONG THE MEDIAN OF -Y2- (I-40) AS SHOWN ON SHEETS TMP-7 THRU TMP-9.

STEP 5: AWAY FROM TRAFFIC AND BEHIND PORTABLE CONCRETE BARRIER, CONSTRUCT THE CENTER BENT OF THE -L- (BALTIMORE ROAD) STRUCTURE OVER -Y2- (I-40) AND THE ASSOCIATED MEDIAN WORK, INCLUDING THE TRENCHLESS PIPE INSTALLATIONS FOR THE MEDIAN AND RETENSIONING THE CABLE GUIDERAIL.

STEP 6: INSTALL AND COVER DETOUR SIGNS AS SHOWN ON SHEETS TMP-2 AND TMP-2A.

STEP 7: IN ACCORDANCE WITH THE TIME RESTRICTIONS ON SHEET TMP-1B, UNCOVER DETOUR SIGNS INSTALLED IN STEP 6 AND CLOSE -Y2- (I-40) TO TRAFFIC IN ONE DIRECTION AT A TIME BETWEEN EXIT 174 AND EXIT 180 AS SHOWN ON SHEETS TMP-2 AND 2A.

- INSTALL GIRDERS FOR -L- (BALTIMORE ROAD) STRUCTURE OVER I-40.
- REMOVE/COVER DETOUR SIGNING INSTALLED IN STEP 6 AND REOPEN -Y2- (I-40) TO TRAFFIC BETWEEN EXIT 174 AND EXIT 180.
- REPEAT THIS STEP AS NECESSARY TO PLACE ALL OF THE GIRDERS IN ONE DIRECTION AND THEN TO PLACE ALL OF THE GIRDERS IN THE OTHER DIRECTION IN THE SAME MANNER.

STEP 8: AWAY FROM TRAFFIC, COMPLETE THE -L- (BALTIMORE ROAD) STRUCTURE OVER I-40.

STEP 9: USING RSD 1101.02 (SHEET 4 OF 19), REMOVE THE ANCHORED AND UNANCHORED PORTABLE CONCRETE BARRIER WITH DRAINAGE SLOTS AND CRASH CUSHIONS INSTALLED ON THE INSIDE OF -Y2- (I-40) IN STEP 4.

STEP 10: AWAY FROM TRAFFIC, COMPLETE THE REMAINDER OF -L- (BALTIMORE ROAD) NORTH OF US 158, -LPB-, -RPB-, -RPC-, AND -RPD-. USING RSD 1101.02 (SHEET 4 OF 19), INSTALL AND COVER THE FINAL INTERCHANGE SIGNING IN ACCORDANCE WITH THE FINAL SIGNING PLANS.

PHASE II (US 158 AND BALTIMORE ROAD SOUTH OF US 158)

STEP 1: USING RSD 1101.01 (SHEETS 1 THRU 3), INSTALL ADVANCE WARNING SIGNS ON -L- (BALTIMORE ROAD) AND ALL -Y- LINES AND SIDE STREETS. USING RSD 1101.02 (SHEET 1 OF 19) AS NEEDED, COMPLETE THE CONSTRUCTION OF -Y1- (US 158), -L- (BALTIMORE ROAD) AT -Y1- (US 158), -Y3- (ARMSWORTHY ROAD) AT -Y1- (US 158) AND -Y4- (OLD BALTIMORE ROAD) AT -Y1- (US 158), EXCLUDING THE CONCRETE ISLANDS. INSTALL DRUMS AND TYPE III BARRICADES TO CLOSE -L- (BALTIMORE ROAD) AT -Y1- (US 158). INSTALL TEMPORARY TRAFFIC SIGNAL AT THE INTERSECTION OF -L- (BALTIMORE ROAD) AND -Y1- (US 158). SEE SHEETS TMP-10 THRU TMP-13 FOR DETAIL

STEP 2: USING RSD 1101.02 (SHEET 1 OF 19) AS NEEDED, COMPLETE THE CONSTRUCTION OF -L- (BALTIMORE ROAD) SOUTH OF US 158 UP TO THE TIE TO EXISTING BALTIMORE ROAD. SEE SHEET TMP-10 FOR DETAIL.

STEP 3: WORKING IN A CONTINUOUS MANNER, COMPLETE THE FOLLOWING TO SHIFT TRAFFIC ONTO -L- (BALTIMORE ROAD)

- INSTALL TEMPORARY PAVEMENT MARKINGS ON -Y1- (US 158).
- ACTIVATE THE TEMPORARY TRAFFIC SIGNAL.
- INSTALL DRUMS AND BARRICADES ON -Y4- (BALTIMORE ROAD) AT -L- (BALTIMORE ROAD).
- SHIFT TRAFFIC ONTO -L- (BALTIMORE ROAD).
- CLOSE -Y4- (OLD BALTIMORE ROAD) AT STA. 15+00.
- SEE SHEETS TMP-14 THRU TMP-17 FOR DETAIL.

STEP 4: COMPLETE CONSTRUCTION OF -Y4- (OLD BALTIMORE ROAD) FROM -L- (BALTIMORE ROAD) TO THE TIE TO EXISTING BALTIMORE ROAD. INSTALL TEMPORARY PAVEMENT MARKINGS IN ACCORDANCE WITH THE FINAL PAVEMENT MARKING PLANS AND FINAL SIGNING IN ACCORDANCE WITH THE FINAL SIGNING PLANS. REMOVE THE DRUMS AND BARRICADES ON -Y4- (OLD BALTIMORE ROAD) AND OPEN TO TRAFFIC. SEE SHEET TMP-14 FOR DETAIL.

STEP 5: USING RSD 1101.02 (SHEET 1 OF 19) AS NEEDED, CONSTRUCT THE CONCRETE MEDIANS ON -Y1- (US 158), -Y3- (ARMSWORTHY ROAD), AND -Y4- (OLD BALTIMORE ROAD) AND INSTALL TEMPORARY PAVEMENT MARKINGS IN ACCORDANCE WITH THE FINAL PAVEMENT MARKING PLANS.

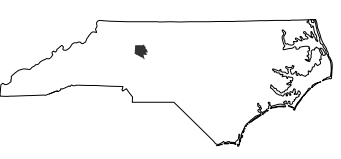
PHASE III

STEP 1: USING RSD 1101.02 (SHEETS 1 THRU 4 OF 19) AS NECESSARY, INSTALL FINAL PAVEMENT LAYER AND FINAL PAVEMENT MARKINGS AND MARKERS, REMOVE EXISTING “BERMUDA RUN 2 MILES” SIGN, UNCOVER INTERCHANGE SIGNS, REMOVE ALL TEMPORARY TRAFFIC CONTROL DEVICES AND OPEN ALL LANES TO TRAFFIC.

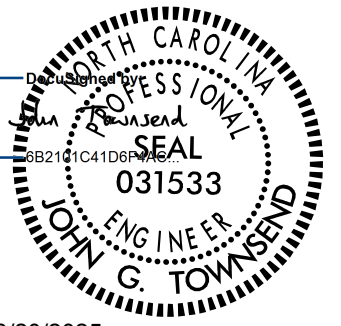
U-6187

TMP003

NORTH CAROLINA
DEPARTMENT OF TRANSPORTATION
DAVIE COUNTY




WORK ZONE TRAFFIC CONTROL UNIT



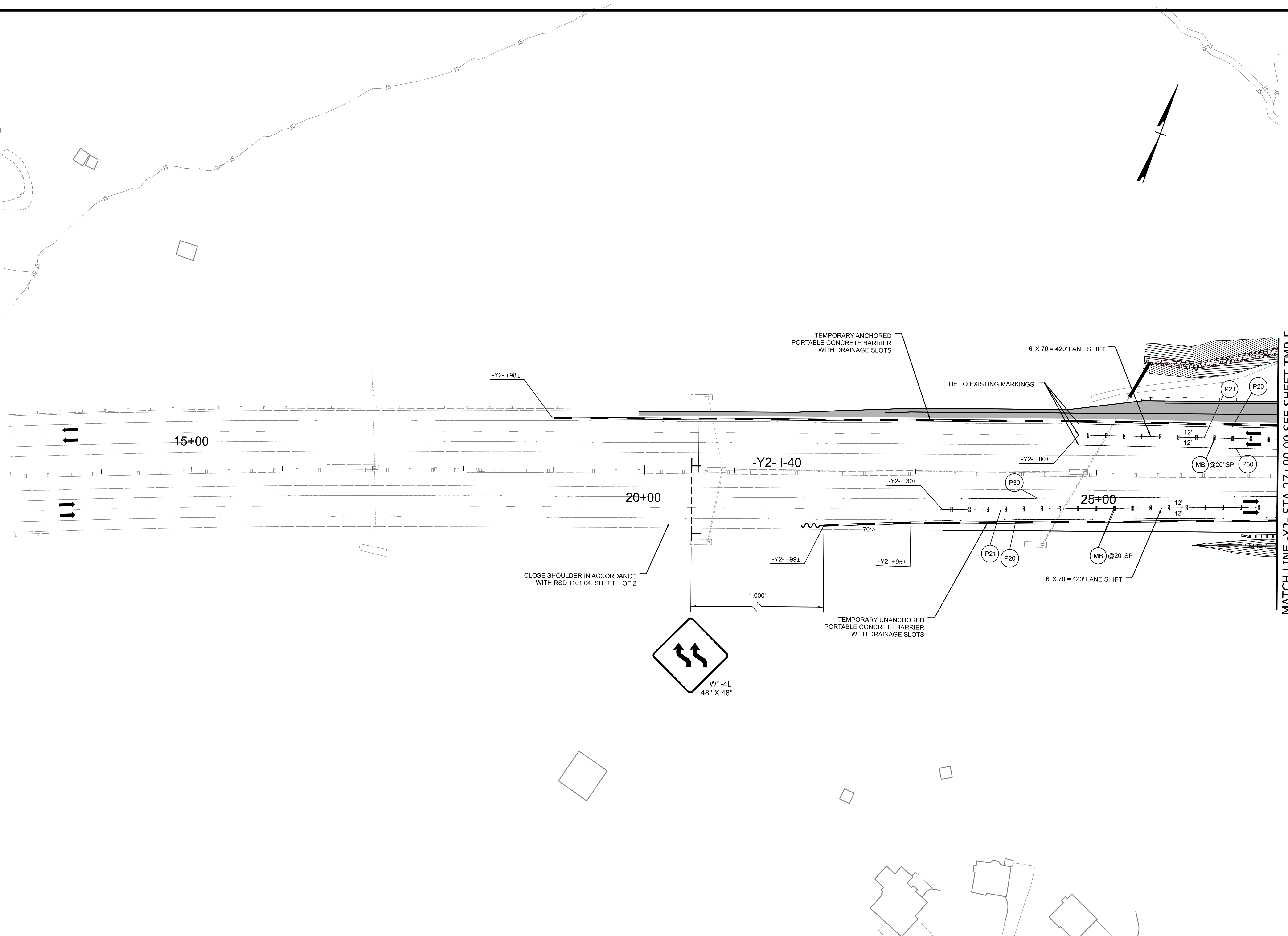
8/20/2025

PREPARED BY



VHB Engineering NC, P.C. (C-3705)
940 Main Campus Drive, Suite 500
Raleigh, NC 27605

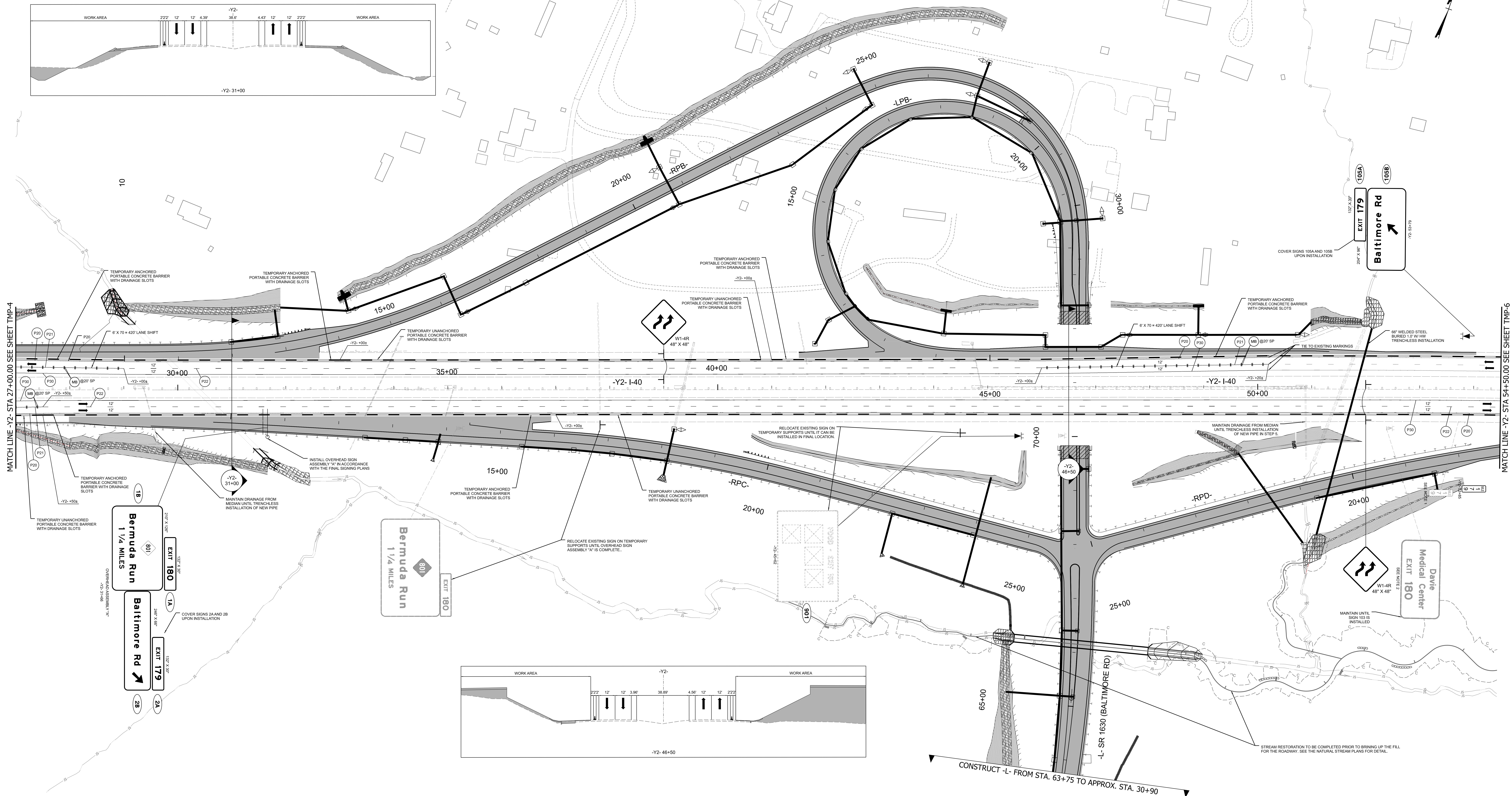
TEMPORARY TRAFFIC
CONTROL PHASING



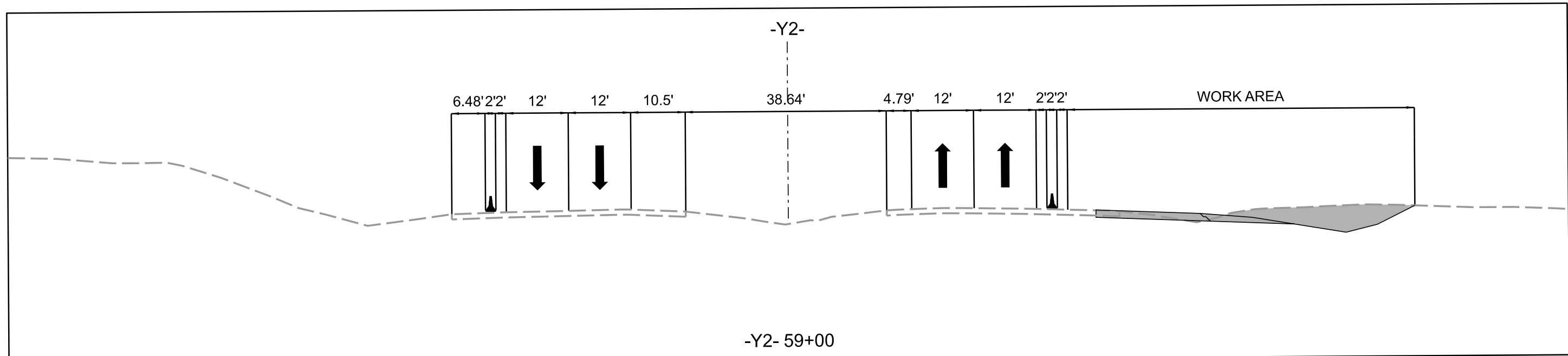
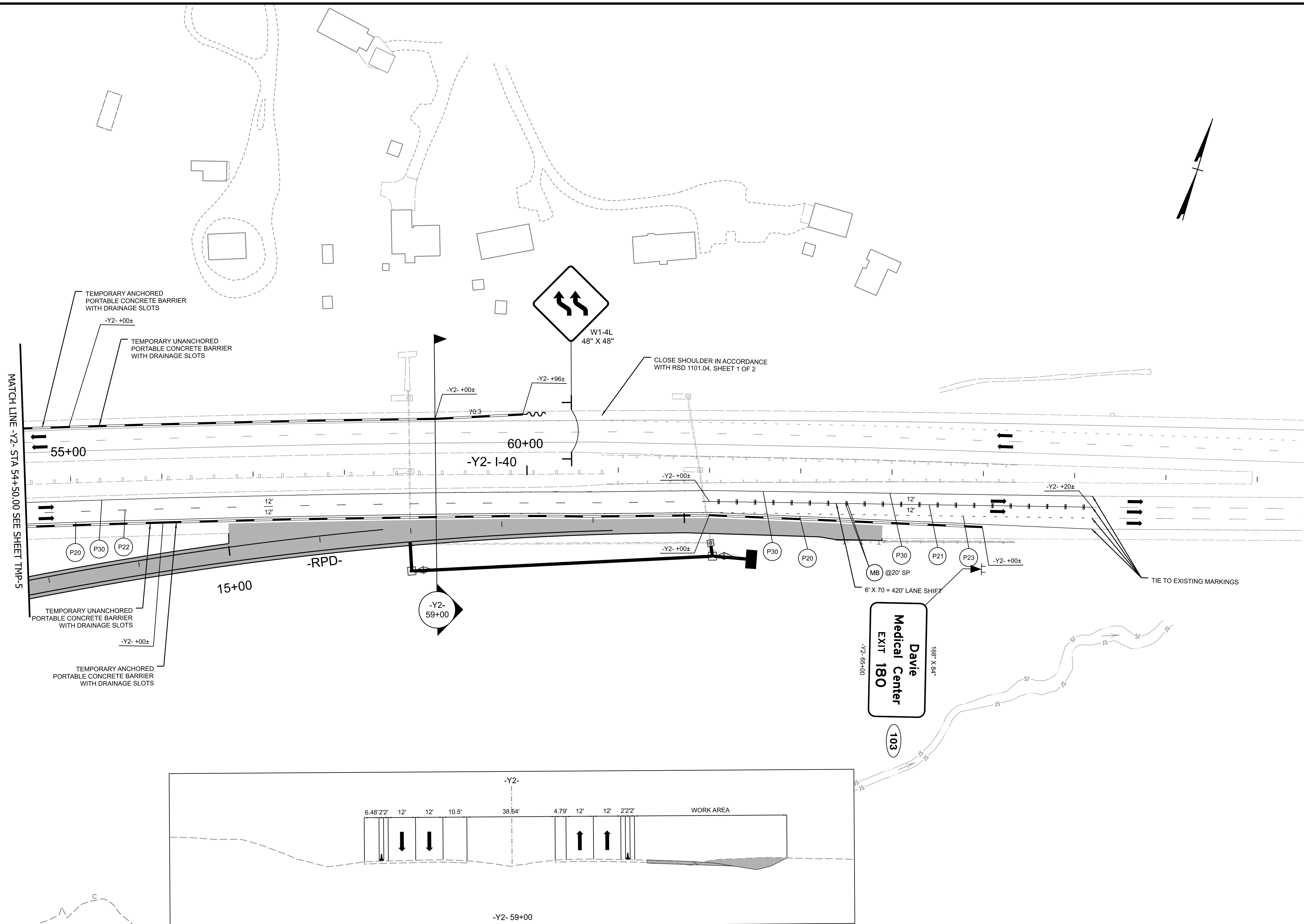
TEMPORARY TRAFFIC CONTROL DETAIL

PHASE I -

STEPS 2 AND 3



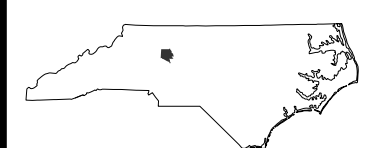
11/14/23



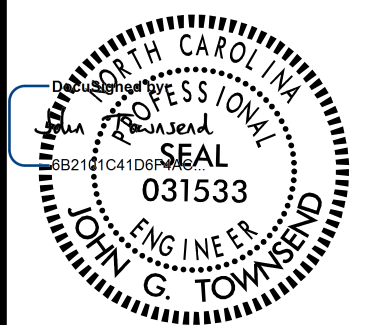
U-6187

TMP 006

NORTH CAROLINA
DEPARTMENT OF TRANSPORTATION
DAVIE COUNTY



WORK ZONE TRAFFIC CONTROL UNIT



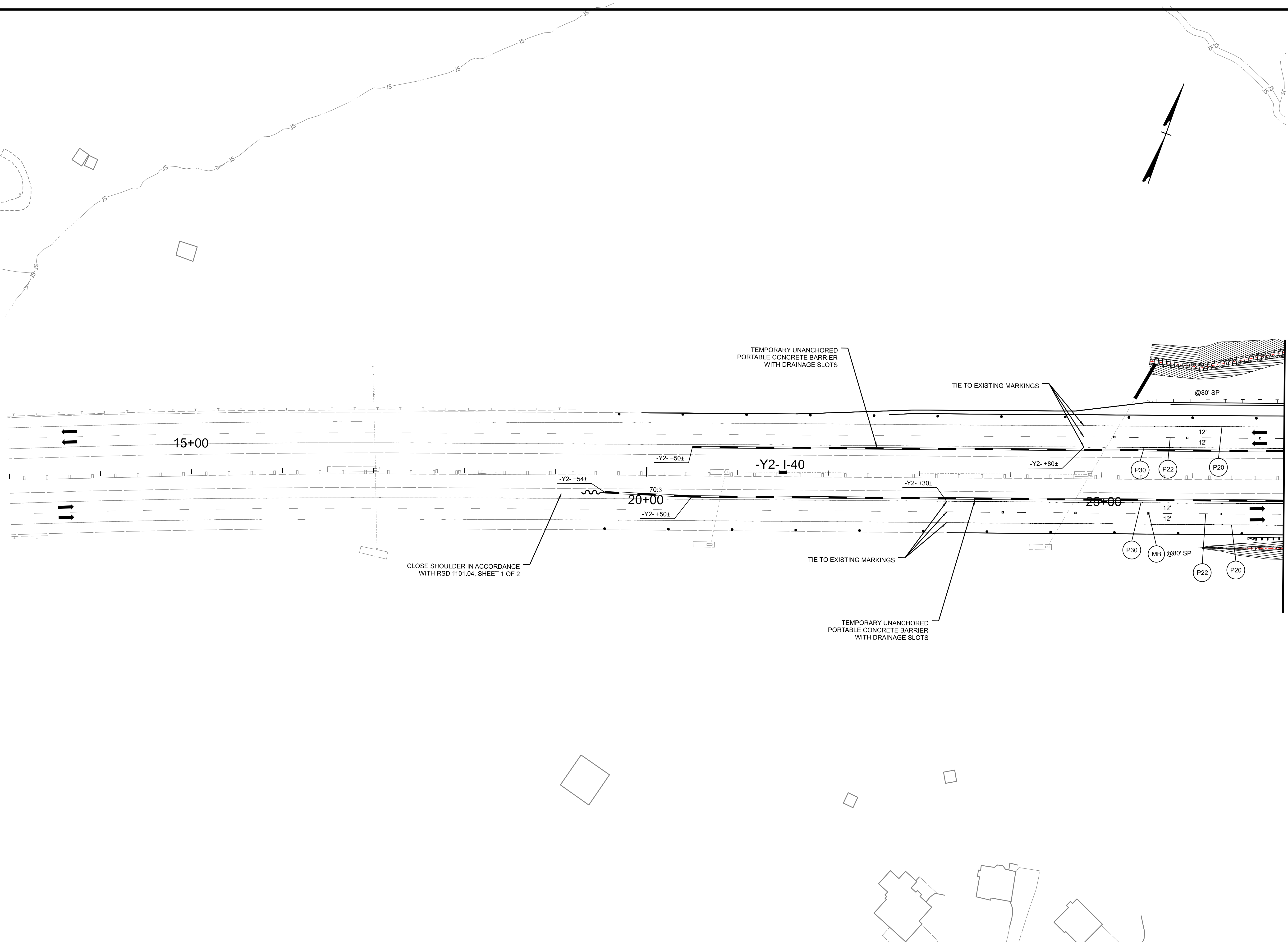
8/20/2025

PREPARED BY



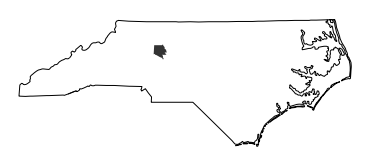
TEMPORARY TRAFFIC
CONTROL DETAIL
PHASE I -
STEPS 2 AND 3

11/14/23

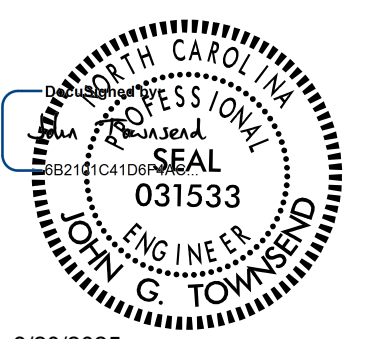


U-6187
TMP 007

NORTH CAROLINA
DEPARTMENT OF TRANSPORTATION
DAVIE COUNTY



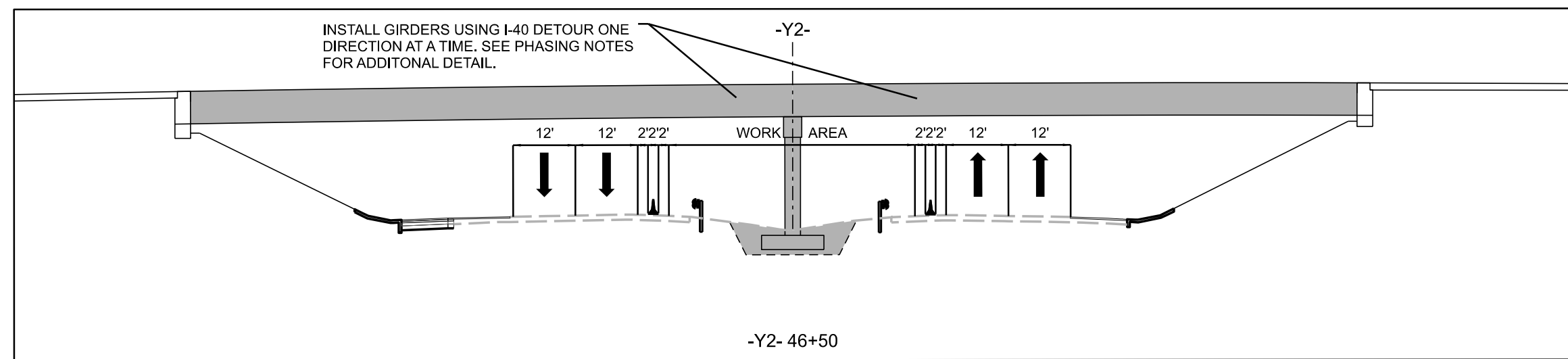
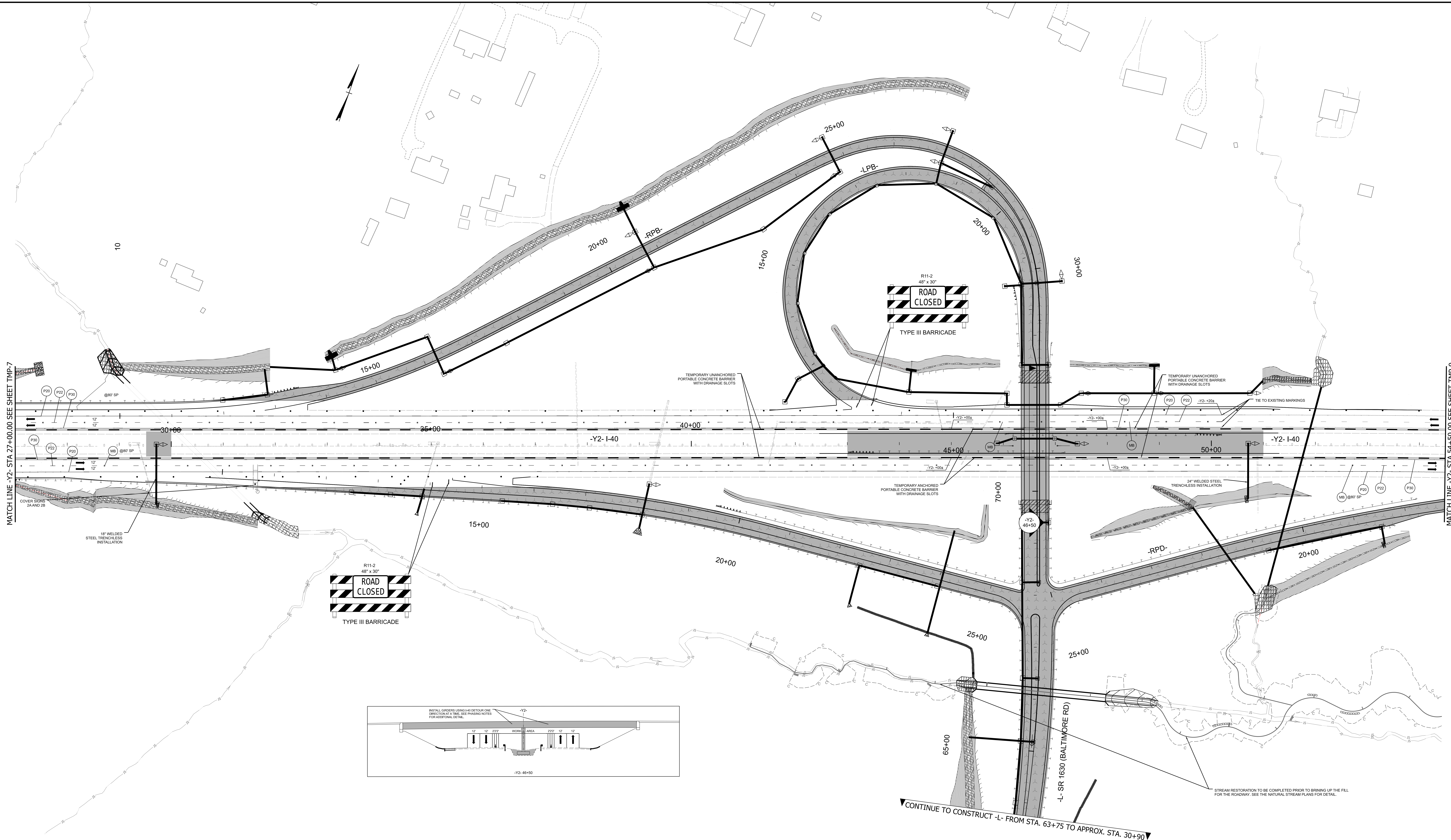
WORK ZONE TRAFFIC CONTROL UNIT



8/20/2025

PREPARED BY
vhb
VHB Engineering NC, P.C. (C-3705)
940 Main Campus Drive, Suite 500
Raleigh, NC 27605

TEMPORARY TRAFFIC
CONTROL DETAIL
PHASE I -
STEPS 4-10

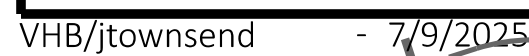


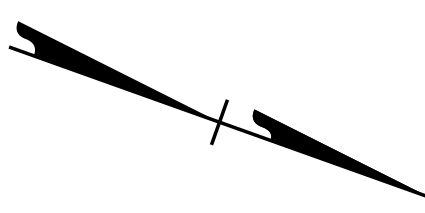
U-6187
TMP 008
NORTH CAROLINA
DEPARTMENT OF TRANSPORTATION
DAVE COUNTY

WORK ZONE TRAFFIC CONTROL UNIT

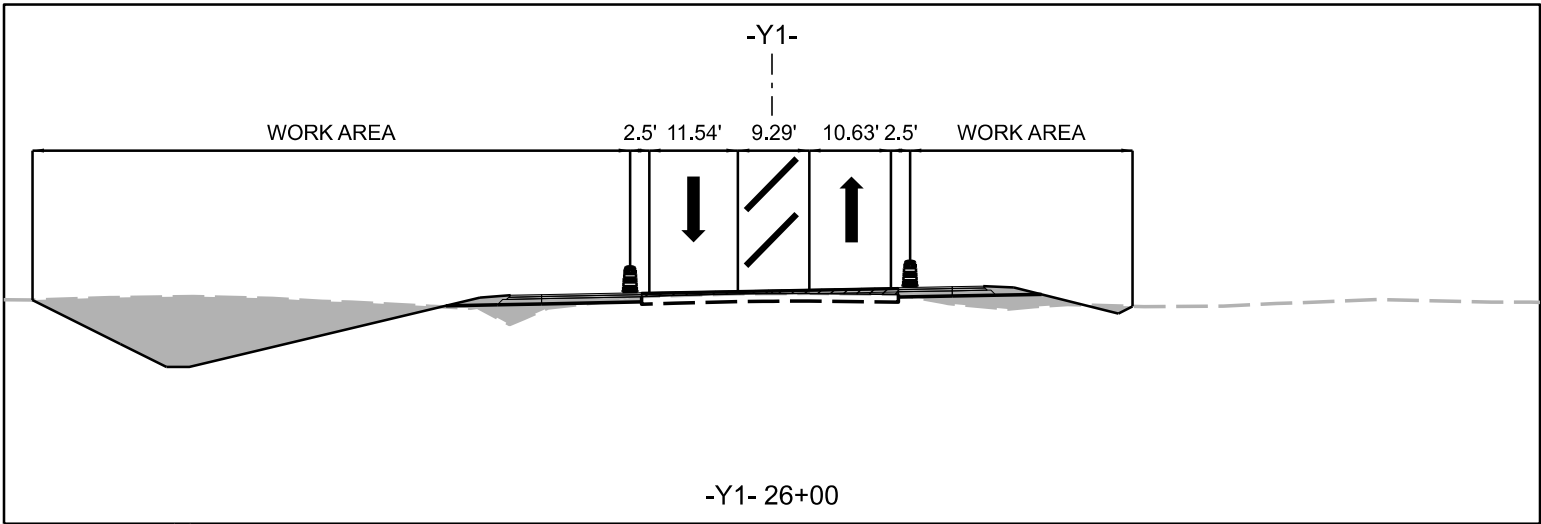
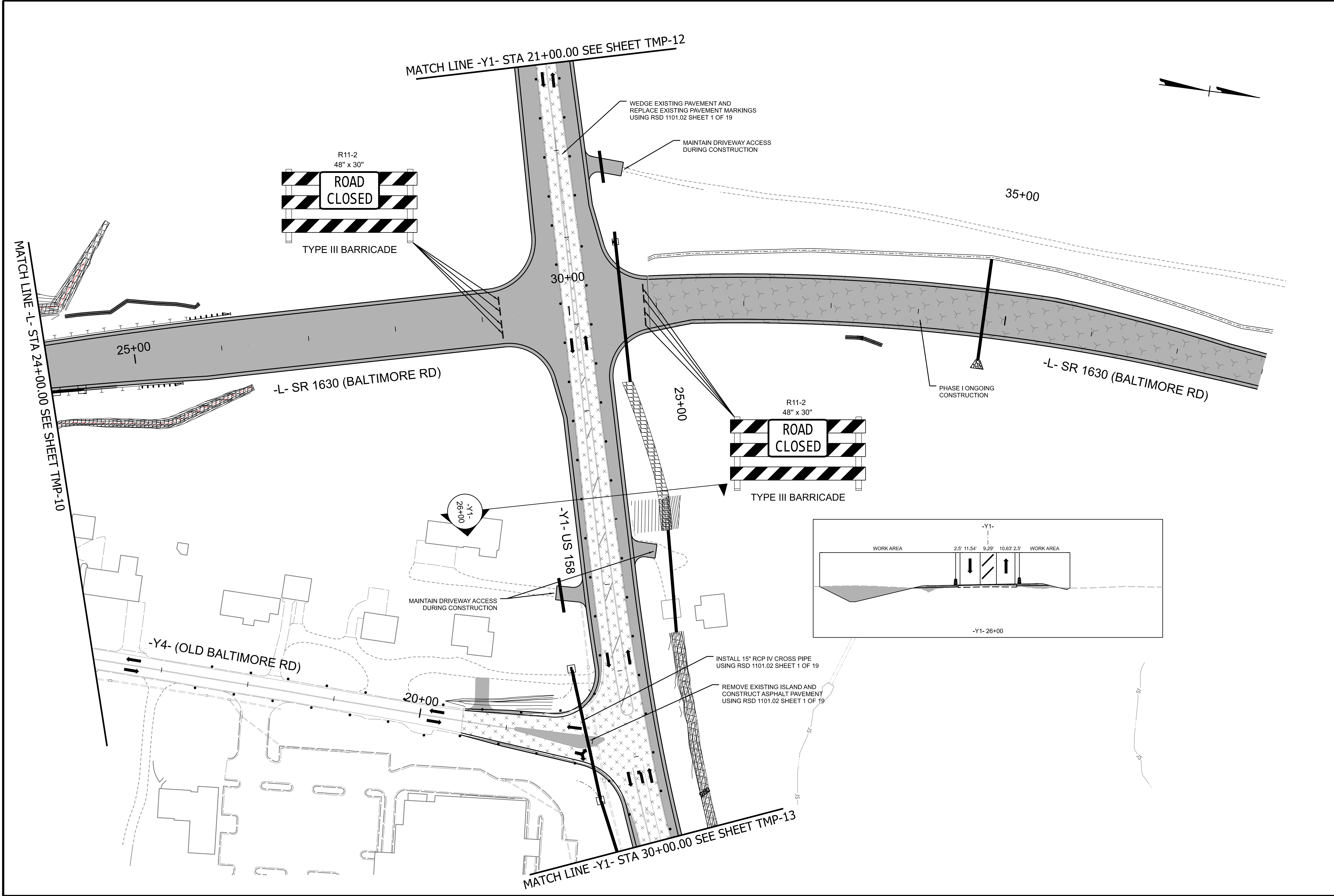
PREPARED BY
vhb
VH Engineering, Inc. C-0783
161 West Gates Drive, Suite 205
Raleigh, NC 27603

TEMPORARY TRAFFIC CONTROL DETAIL
PHASE I -
STEPS 4-10





TEMPORARY TRAFFIC CONTROL DETAIL PHASE II - STEPS 1 AND 2



U-6187

TMP | 011

NORTH CAROLINA
DEPARTMENT OF TRANSPORTATION
DAVIE COUNTY

WORK ZONE TRAFFIC CONTROL UNIT

PROFESSIONAL
SEAL
031533
JOHN C. TOWNSEND
ENGINEER

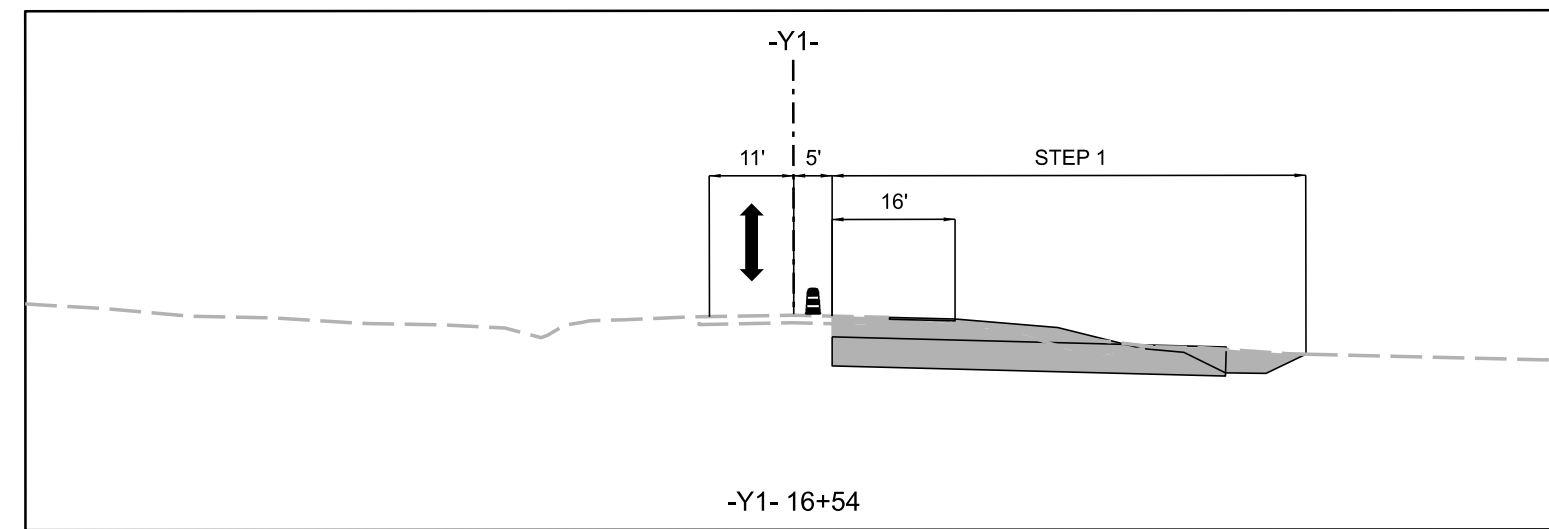
8/20/2025

PREPARED BY

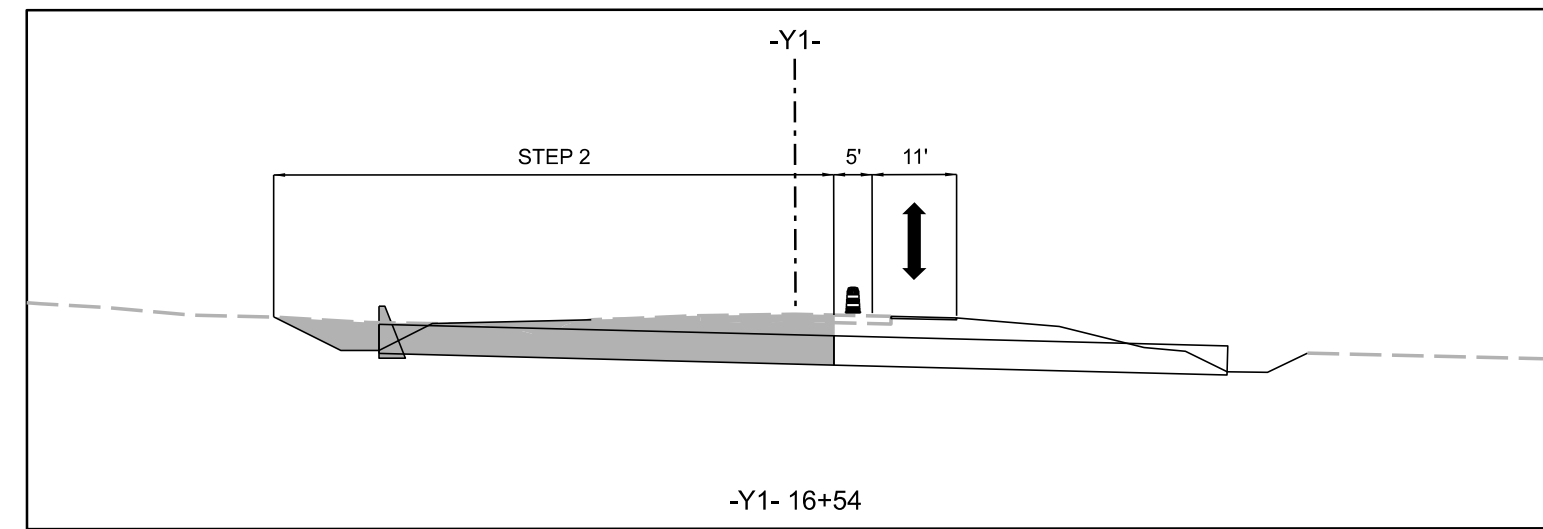
VHB Engineering NC, P.C. (C-3705)
940 Main Campus Drive, Suite 500
Raleigh, NC 27605

TEMPORARY TRAFFIC
CONTROL DETAIL
PAHSE II -
STEPS 1 AND 2

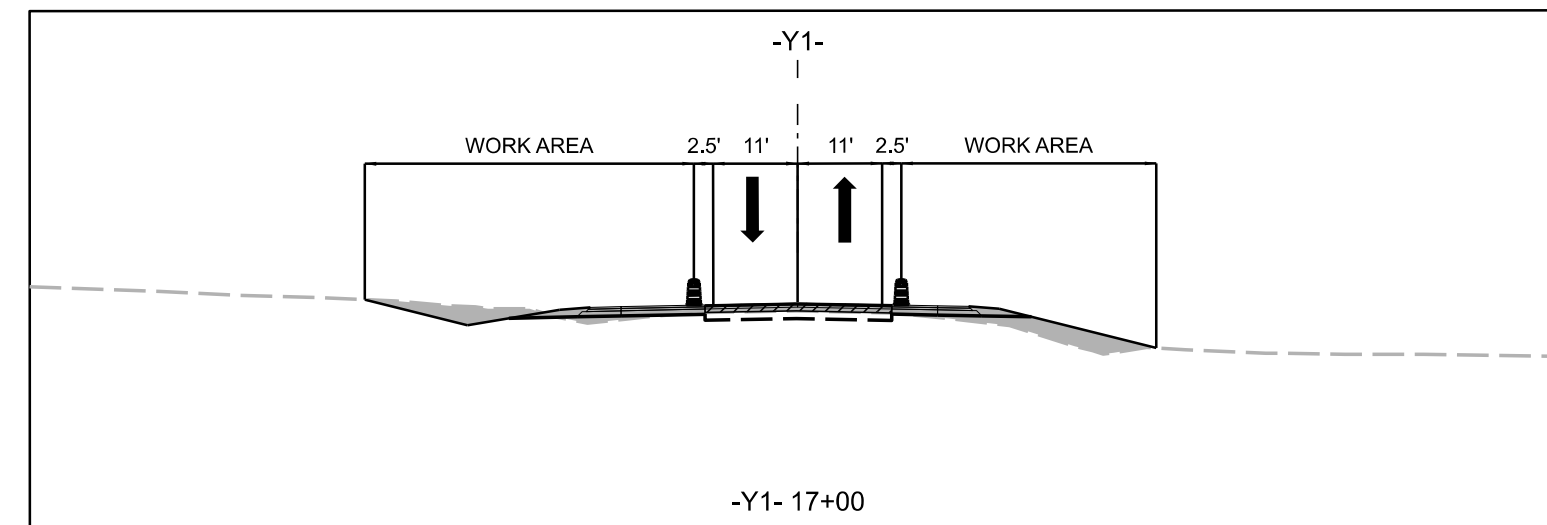
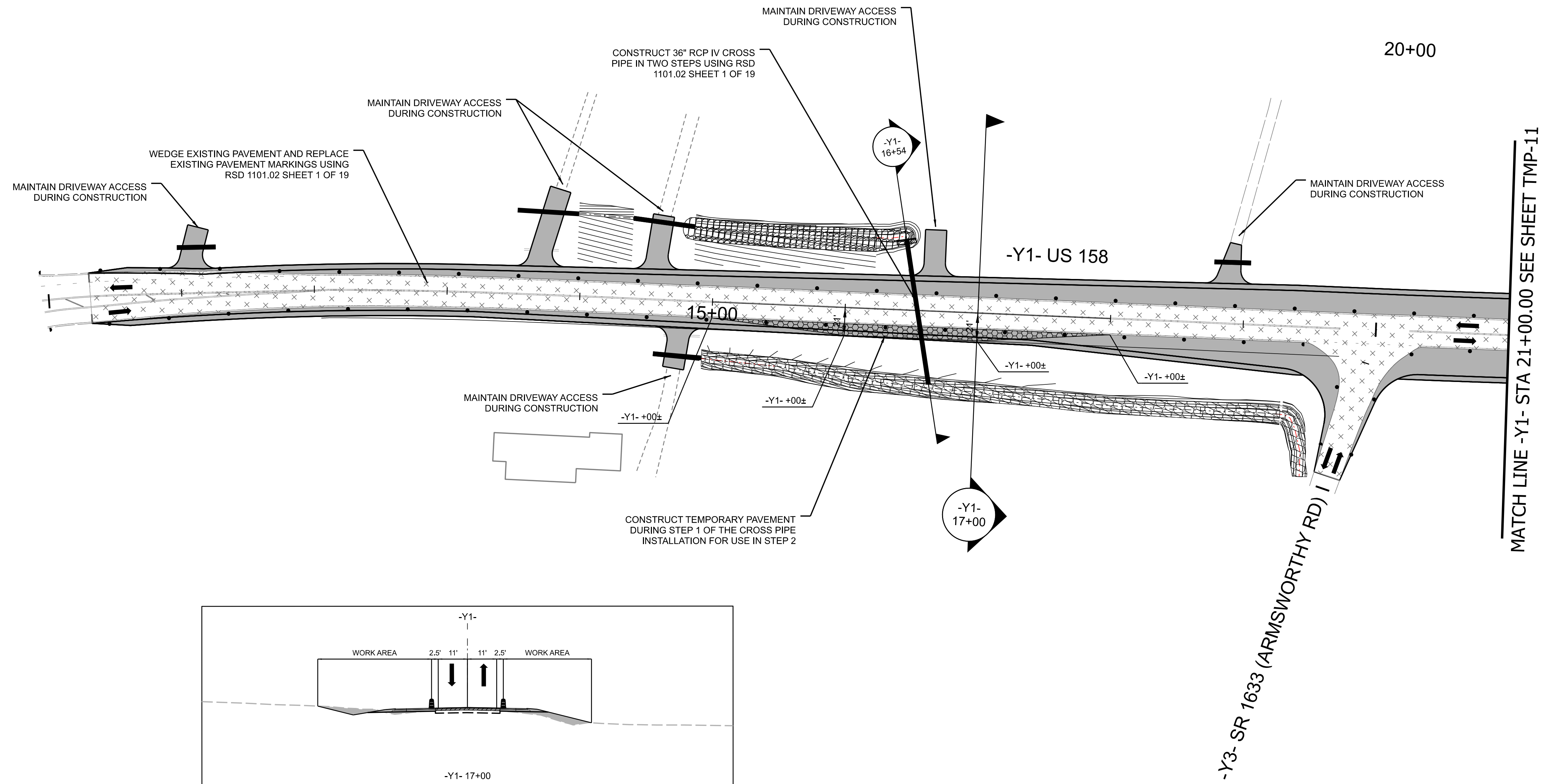
11/14/23



CROSS PIPE INSTALLATION SECTION VIEW
STEP 1



CROSS PIPE INSTALLATION SECTION VIEW
STEP 2



U-6187

TMP012

NORTH CAROLINA
DEPARTMENT OF TRANSPORTATION
DAVIE COUNTY

WORK ZONE TRAFFIC CONTROL UNIT

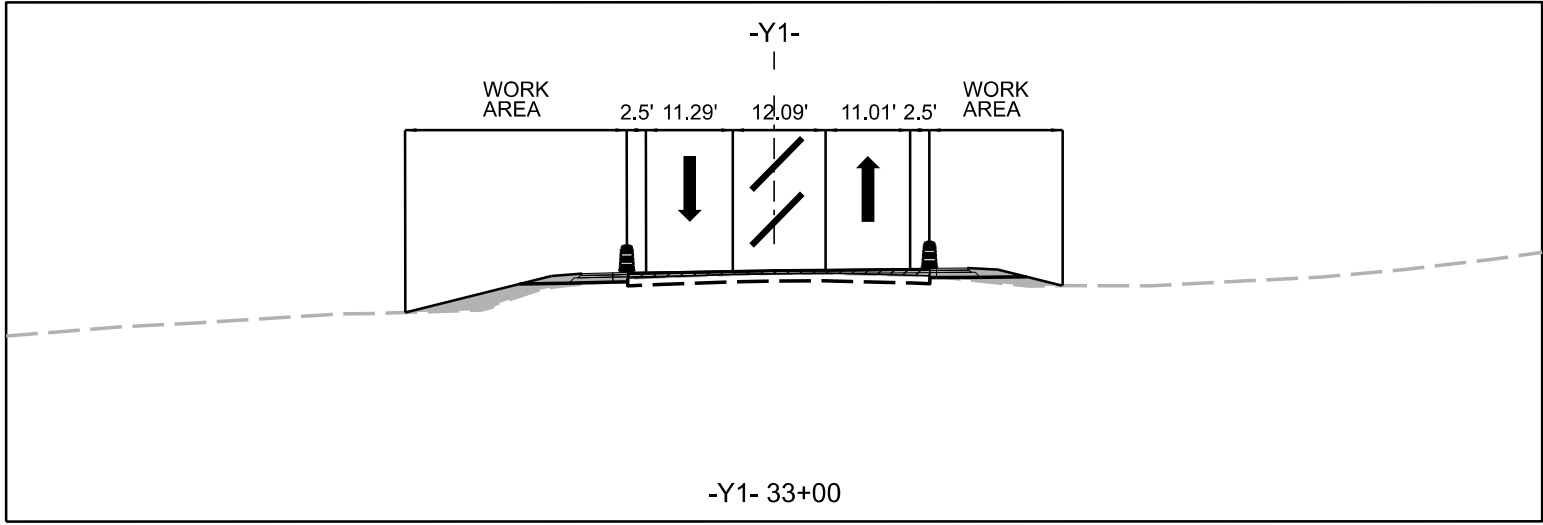
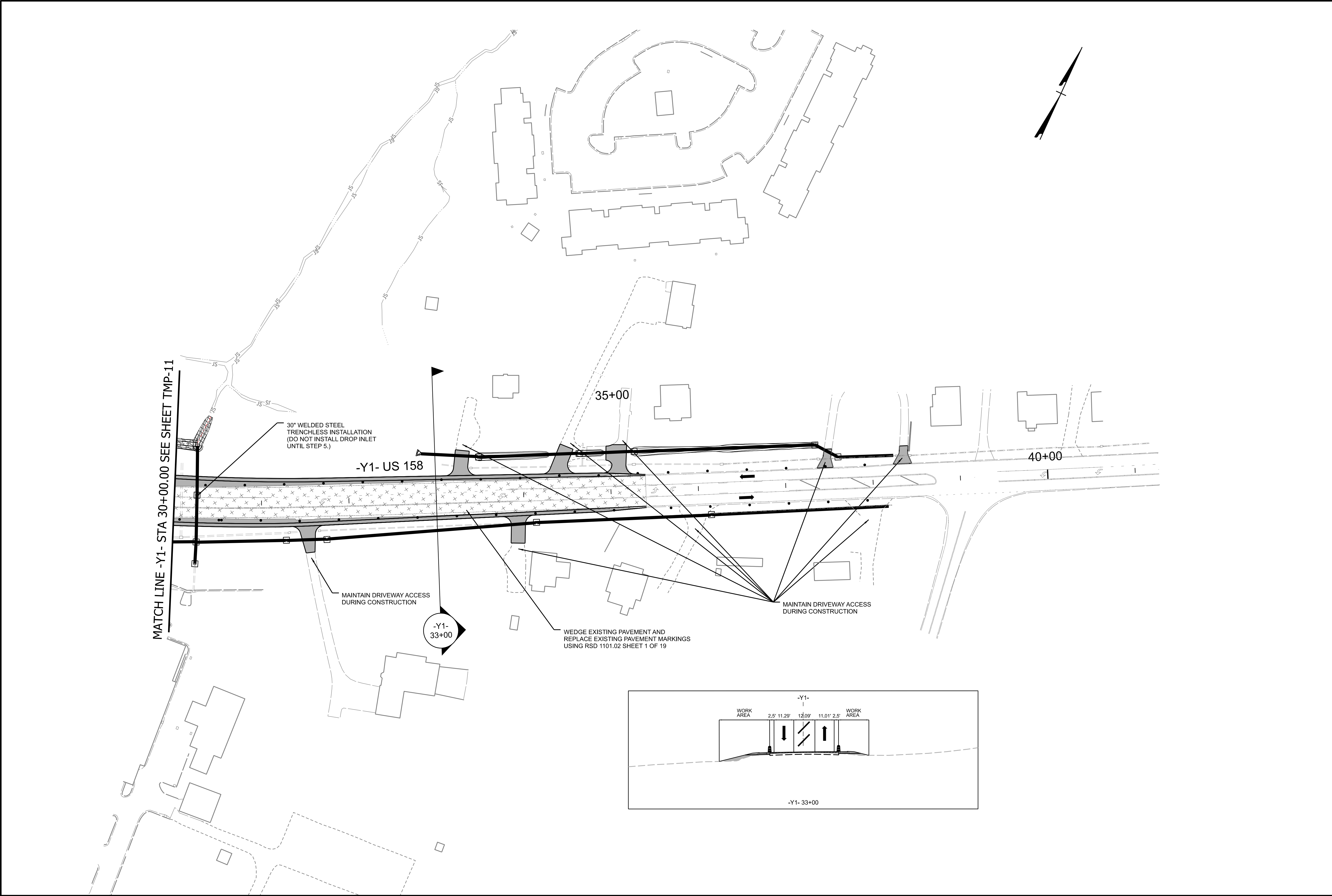
PROFESSIONAL
SEAL
031533
JOHN C. TOWNSEND
ENGINEER

8/20/2025

PREPARED BY

VHB Engineering NC, P.C. (C-3705)
940 Main Campus Drive, Suite 500
Raleigh, NC 27605

TEMPORARY TRAFFIC
CONTROL DETAIL
PHASE II -
STEPS 1 AND 2



U-6187

TMP 013

NORTH CAROLINA
DEPARTMENT OF TRANSPORTATION
DAVIE COUNTY

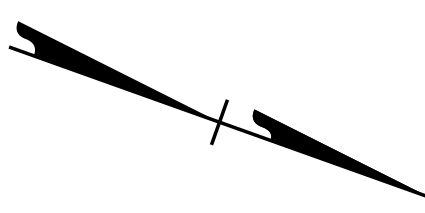
WORK ZONE TRAFFIC CONTROL UNIT

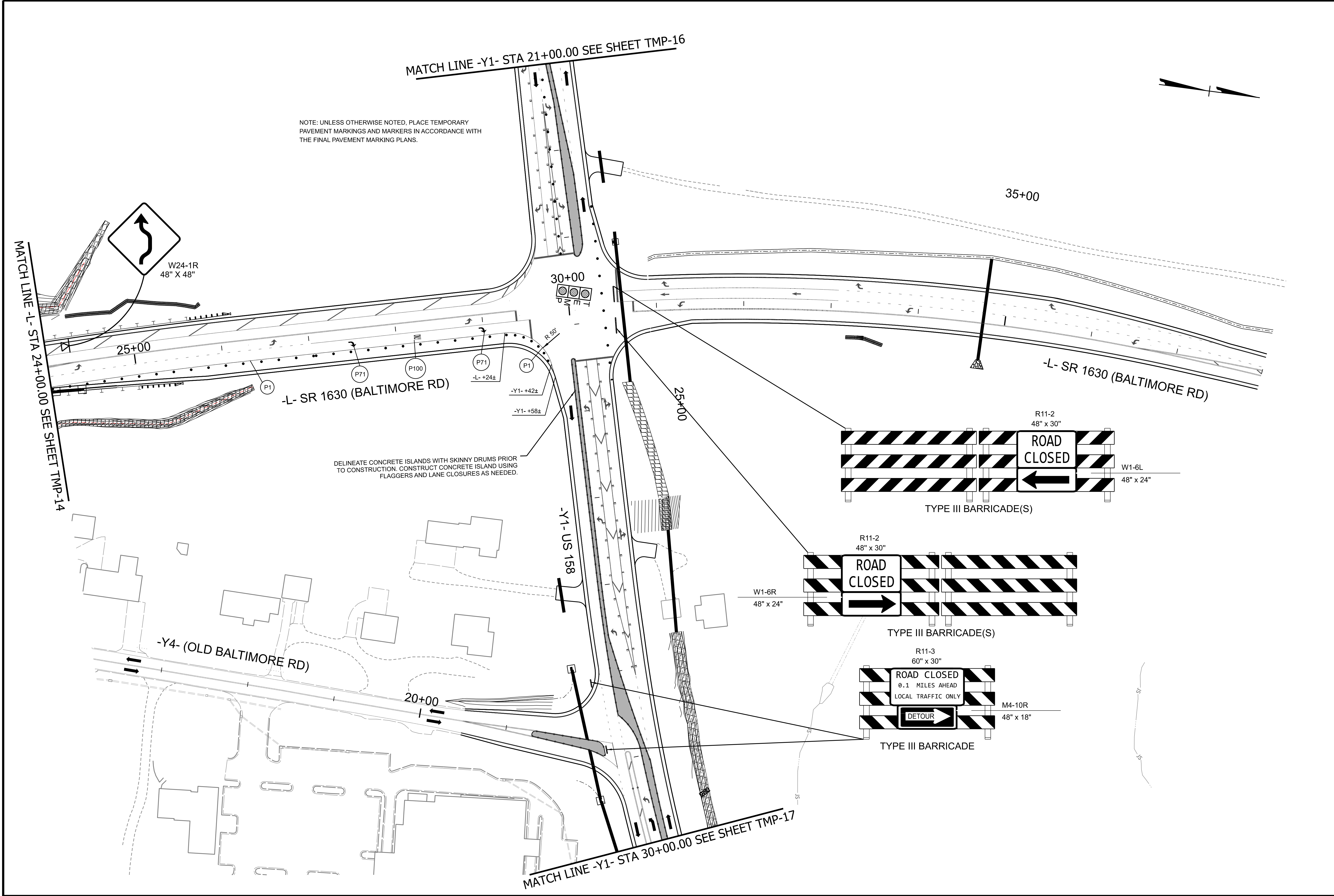
8/20/2025

PREPARED BY

 VHB Engineering NC, P.C. (C-3705)
 940 Main Campus Drive, Suite 500
 Raleigh, NC 27605

TEMPORARY TRAFFIC
 CONTROL DETAIL
 PHASE II -
 STEPS 1 AND 2





U-6187

TMP015

NORTH CAROLINA
DEPARTMENT OF TRANSPORTATION
DAVIE COUNTY

WORK ZONE TRAFFIC CONTROL UNIT

SEAL
031533
JOHN C. TOWNSEND
ENGINEER

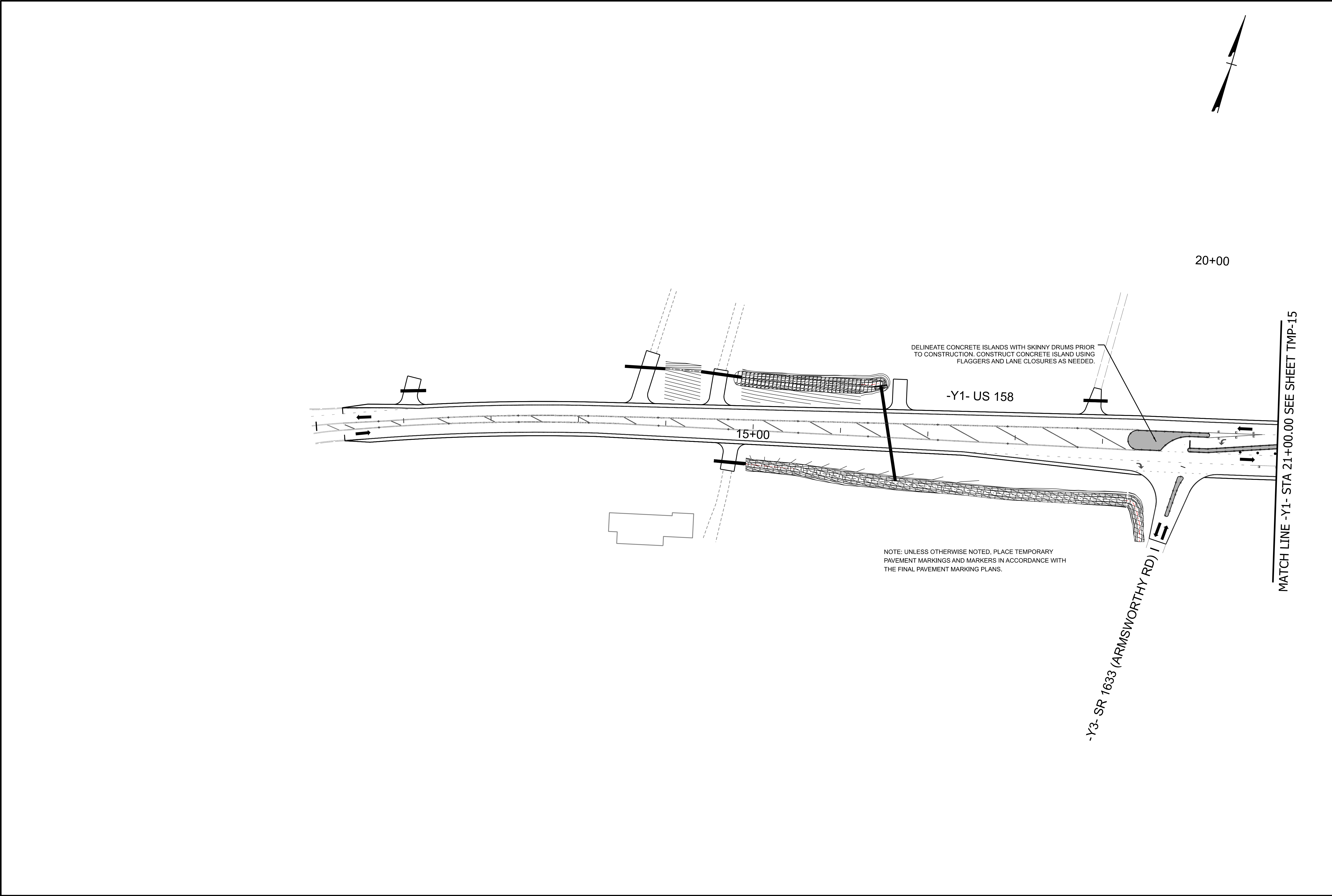
8/20/2025

PREPARED BY

VHB Engineering NC, P.C. (C-3705)
940 Main Campus Drive, Suite 500
Raleigh, NC 27605

TEMPORARY TRAFFIC
CONTROL DETAIL
PAHSE II -
STEPS 3-5

11/14/23



U-6187

TMP016

NORTH CAROLINA
 DEPARTMENT OF TRANSPORTATION
 DAVIE COUNTY

WORK ZONE TRAFFIC CONTROL UNIT

NORTH CAROLINA
 PROFESSIONAL SEAL
 031533
 ENGINEER
 JOHN C. TOWNSEND

8/20/2025

PREPARED BY

VHB Engineering NC, P.C. (C-3705)
 940 Main Campus Drive, Suite 500
 Raleigh, NC 27605

TEMPORARY TRAFFIC CONTROL DETAIL

PHASE II - STEPS 3-5

11/14/23

MATCH LINE -Y1- STA 30+00.00 SEE SHEET TMP-15

DELINEATE CONCRETE ISLANDS WITH SKINNY DRUMS
PRIOR TO CONSTRUCTION. CONSTRUCT CONCRETE ISLAND
USING FLAGGERS AND LANE CLOSURES AS NEEDED.

CONSTRUCT DI USING FLAGGERS AND
LANE CLOSURES AS NEEDED.

-Y1- US 158

35+00

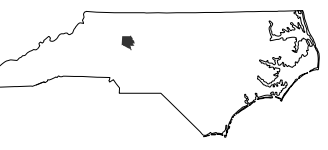
40+00

NOTE: UNLESS OTHERWISE NOTED, PLACE TEMPORARY
PAVEMENT MARKINGS AND MARKERS IN ACCORDANCE WITH
THE FINAL PAVEMENT MARKING PLANS.


U-6187

TMP017

NORTH CAROLINA
DEPARTMENT OF TRANSPORTATION
DAVIE COUNTY




WORK ZONE TRAFFIC CONTROL UNIT



8/20/2025

PREPARED BY



VHB Engineering NC, P.C. (C-3705)
940 Main Campus Drive, Suite 500
Raleigh, NC 27605

TEMPORARY TRAFFIC
CONTROL DETAIL
PHASE II -
STEPS 3-5

VHB/jtownsend - 7/9/2025