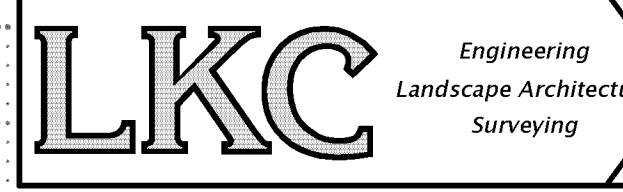


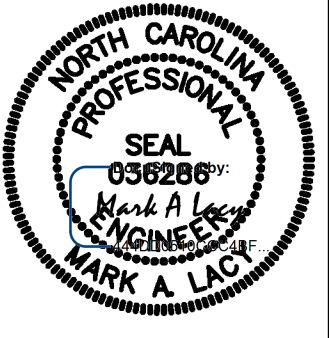
L:\Cart-20.03 24--27 Water & Sewer Relocation U-3628\800 Drawings\810 Design Drawings\02 Civil\Cart-20.03 U-3628 UPRSD3.dwg; Last Saved By: RGA4R20, 2/6/2025 8:28:37 AM; S-1 Profile; Plotted By: Robert Garzo, 07/01/25 09:20:29 AM
XREFs: LKC-NC001-g000a01, Cart-20.03 S-1 PR001, Updater, IMAGE, No Images

LAST SAVED: 02/06/2025



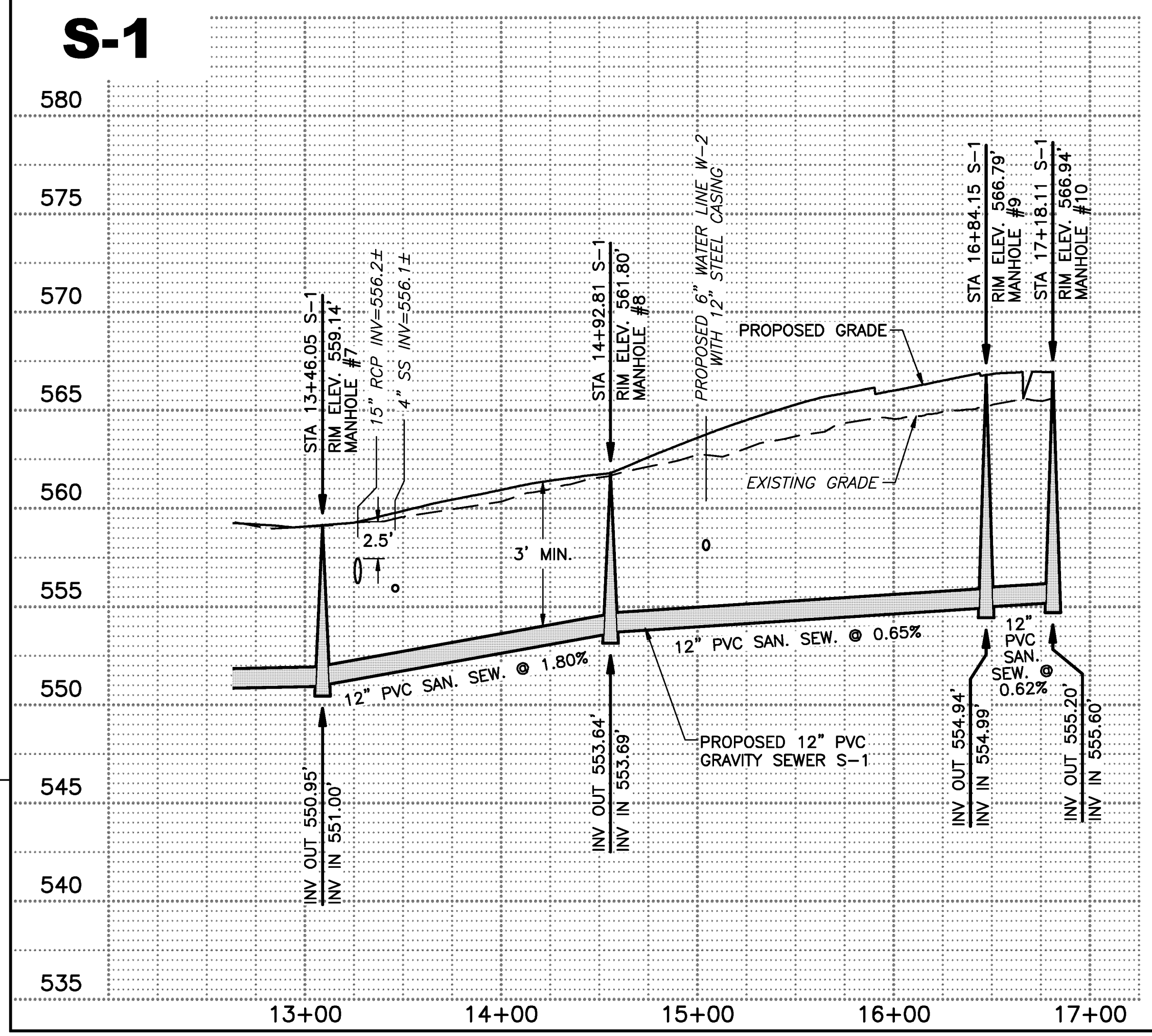
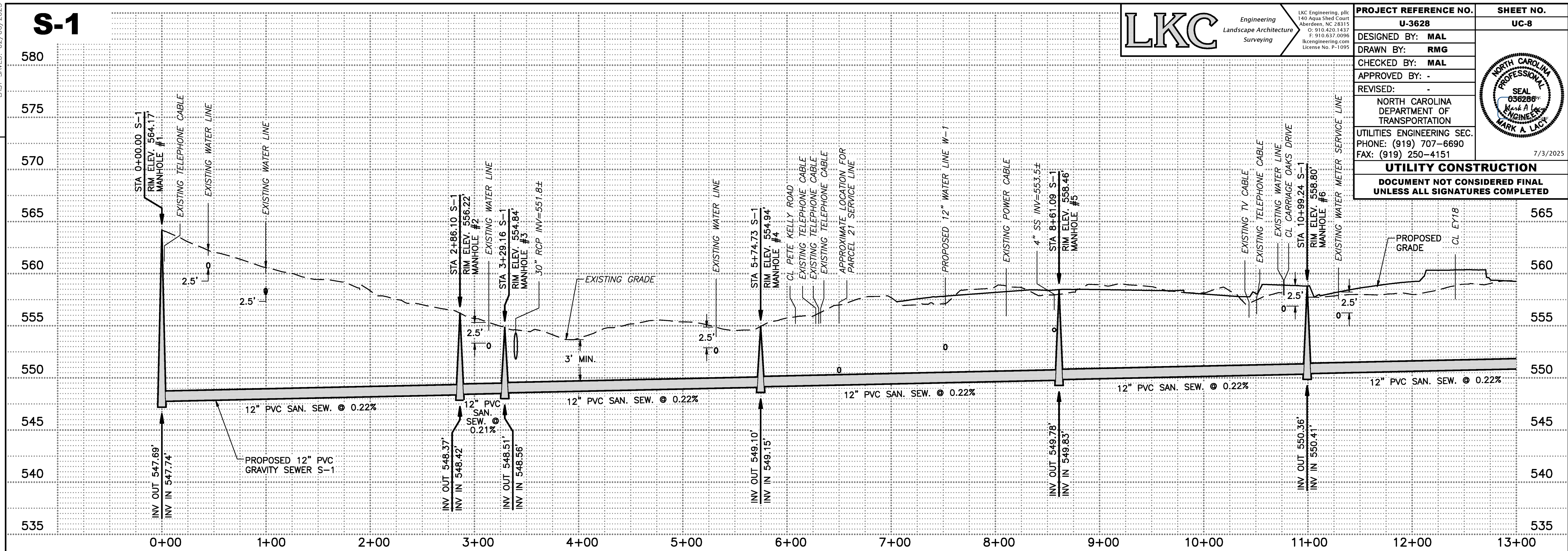
Engineering
Landscape Architecture
Surveying

PROJECT REFERENCE NO.	U-3628	SHEET NO.	UC-8
DESIGNED BY:	MAL		
DRAWN BY:	RMG		
CHECKED BY:	MAL		
APPROVED BY:	-		
REVISED:	-		
NORTH CAROLINA DEPARTMENT OF TRANSPORTATION			
UTILITIES ENGINEERING SEC.			
PHONE: (919) 707-6690			
FAX: (919) 250-4151			
UTILITY CONSTRUCTION			
DOCUMENT NOT CONSIDERED FINAL			
UNLESS ALL SIGNATURES COMPLETED			



7/3/2025

REVISIONS



1. THE EXISTING SEWER SERVICE FOR PARCEL 21 IS LOCATED AT APPROXIMATE STA 6+50 WITH AN APPROXIMATE ELEVATION OF 550.5'.
2. CONTRACTOR SHALL FIELD VERIFY SERVICE LOCATION AND ELEVATION AND ENSURE PROPOSED GRAVITY SEWER IS INSTALLED TO ALLOW THE EXISTING SEWER SERVICE TO BE RECONNECTED TO THE NEW SEWER MAIN.
3. MANHOLES TO BE CAST WITH 0.05' FALL.