

SECTION A-A

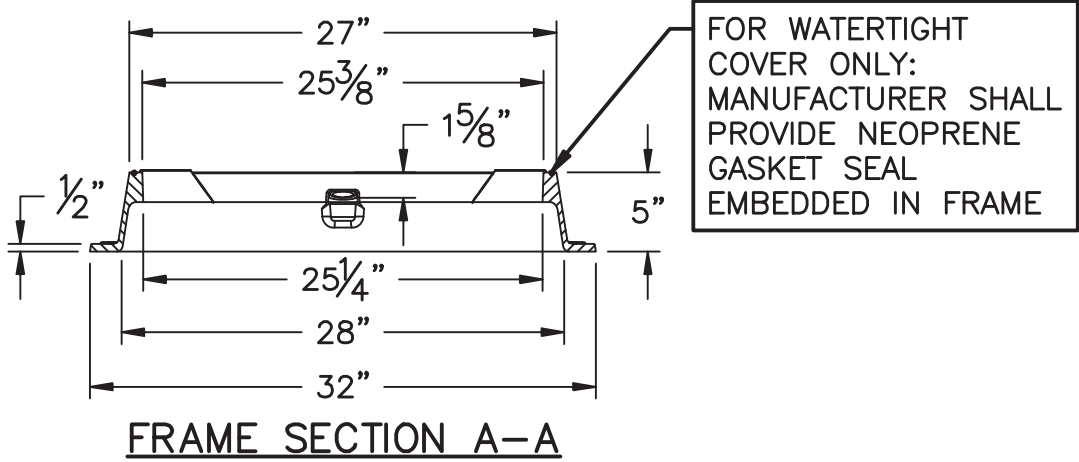
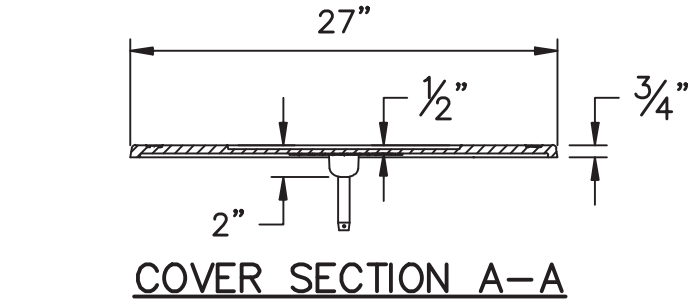
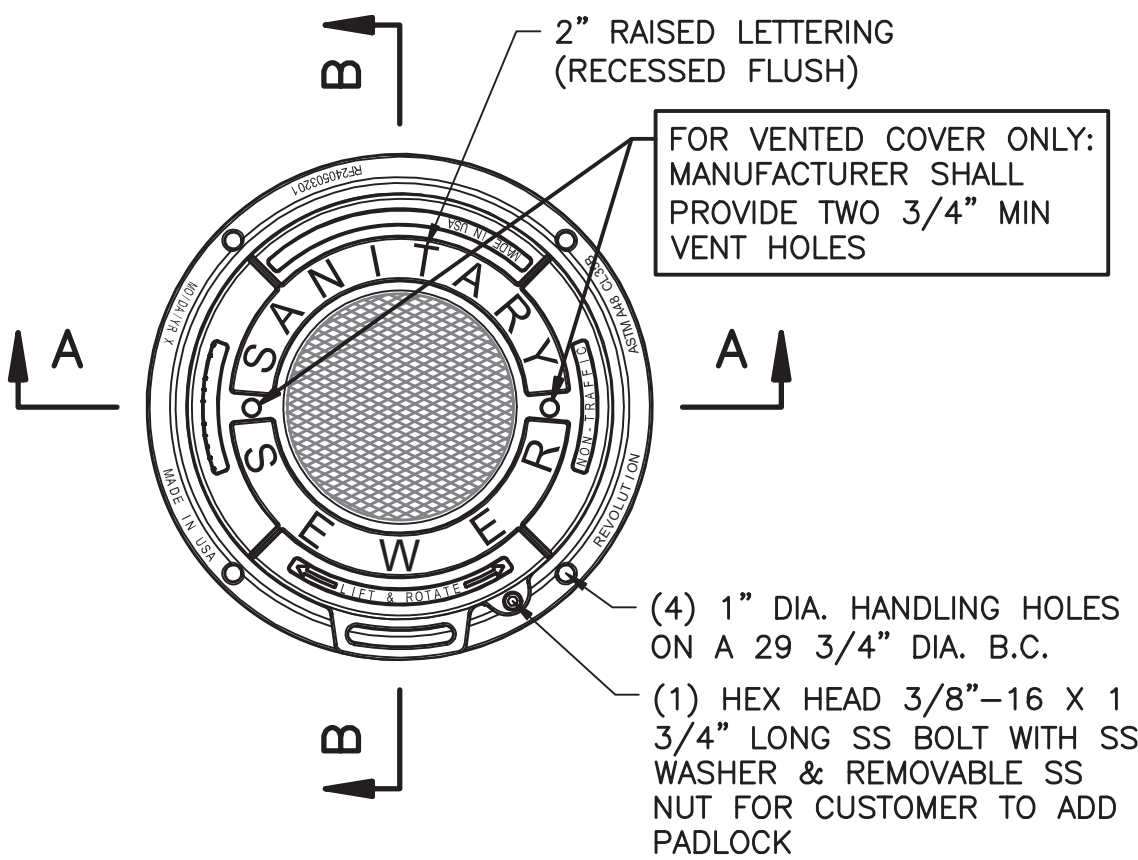
A TYPICAL BORE CASING AND SPIDER
D-1 NOT TO SCALE

NOTE:
CONTRACTOR SHALL COMPLY WITH ALL REQUIREMENTS OF THE "POLICIES AND PROCEDURES FOR ACCOMMODATING UTILITIES ON HIGHWAY RIGHTS-OF-WAY" AS PREPARED BY N.C.D.O.T.

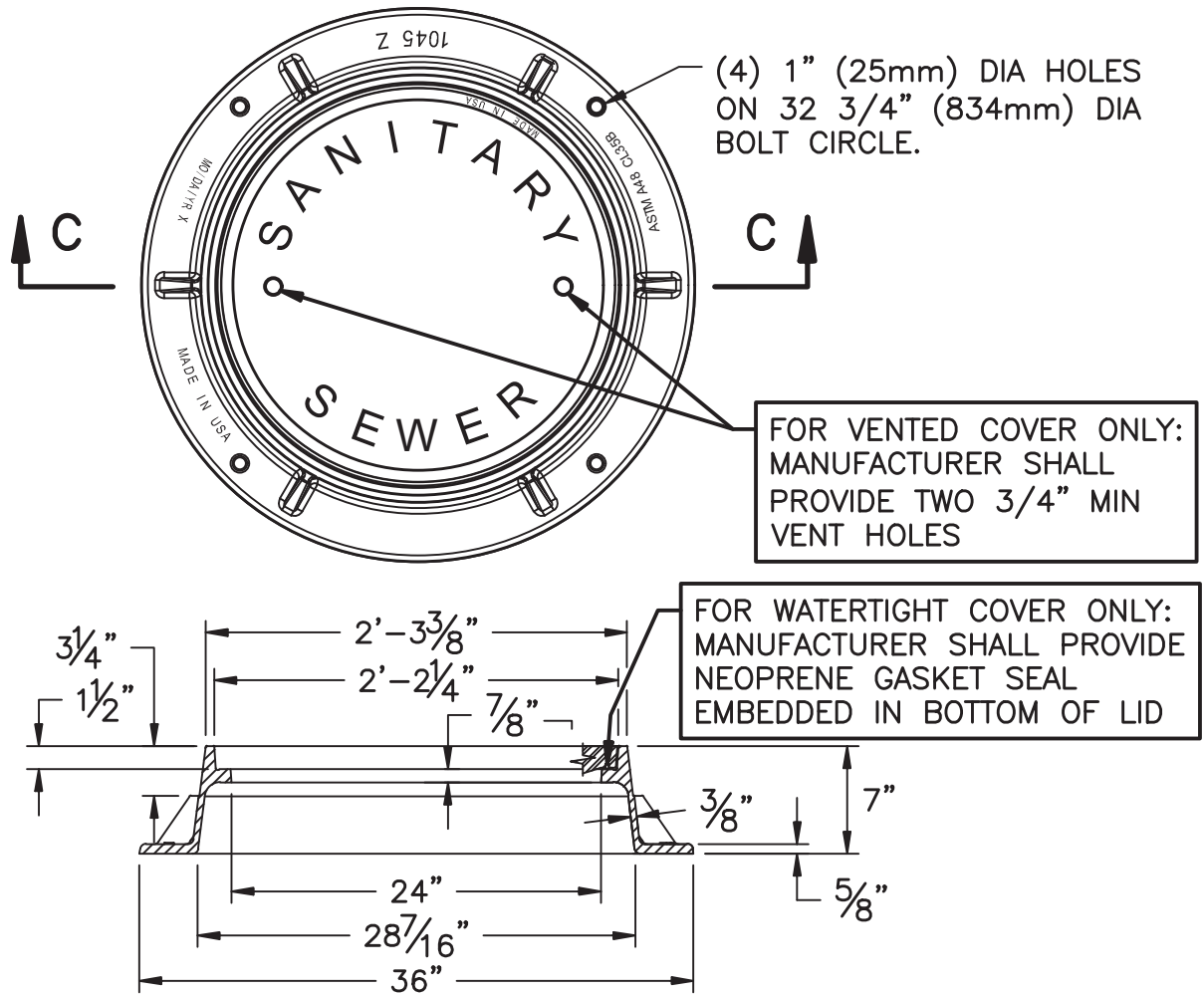
NOTES:

- A PROFILE AND PLAN SHALL BE PROVIDED FROM ENTRY TO EXIT FOR EACH DIRECTIONAL BORE SECTION BY THE DIRECTIONAL BORE CONTRACTOR.
- ALL BORE SECTIONS SHALL BE HYDROSTATICALLY TESTED PER SPECIFICATION STANDARDS UPON COMPLETION OF INSTALLATION AND PRIOR TO PLACING HDPE IN SERVICE.
- LENGTH OF CROSSING, LOCATION OF INSPECTION/OBSERVATION EXCAVATION, NUMBER OF PIPE JOINTS, LOCATION OF BORE MACHINE, AUGER ENTRANCE LOCATION, AND TIE-IN POINTS ARE TO BE APPROVED BY THE ENGINEER PRIOR TO ANY START OF WORK.
- THIS DETAIL IS ALSO APPLICABLE TO STREAMS, WETLANDS, LARGE STORM DRAINS, AND SIMILAR APPLICATIONS FOR DIRECTIONAL BORE.
- THE BORE DEVELOPED FOR THE LEAD IN END OF THE PIPE SHALL BE KEPT AT A MINIMUM DIAMETER FOR THE PIPE INSTALLATION. THE LEAD IN END SHALL BE PULLED THROUGH WITHOUT THE M.J. FLANGE ATTACHED FOR LARGER THAN 6" PIPE INSTALLATIONS. THE M.J. FLANGE FOR SAID LEAD IN END SHALL BE INSTALLED AFTER THE PIPE INSTALLATION WITH THE USE OF A SPLIT M.J. FLANGE PER THE DETAIL ON THIS DRAWING.
- TRACER WIRE SHALL BE TAPED TO PROPOSED PIPE EVERY 10'.

NOMINAL D.I. CARRIER PIPE DIA. (INCHES)	STEEL CASING MINIMUM O.D. (INCHES)	MIN. WALL THICKNESS FOR HIGHWAYS (INCHES)	MIN. WALL THICKNESS FOR RAILROADS (INCHES)
3	8.625	0.250	0.250
4	10.750	0.250	0.250
6	12.0	0.250	0.250
8	16.0	0.250	0.312
10	18.0	0.250	0.312
12	20.0	0.250	0.375
14	24.0	0.250	0.375
16	26.0	0.312	0.500
18	28.0	0.312	0.500
20	30.0	0.312	0.500
24	34.0	0.500	0.625

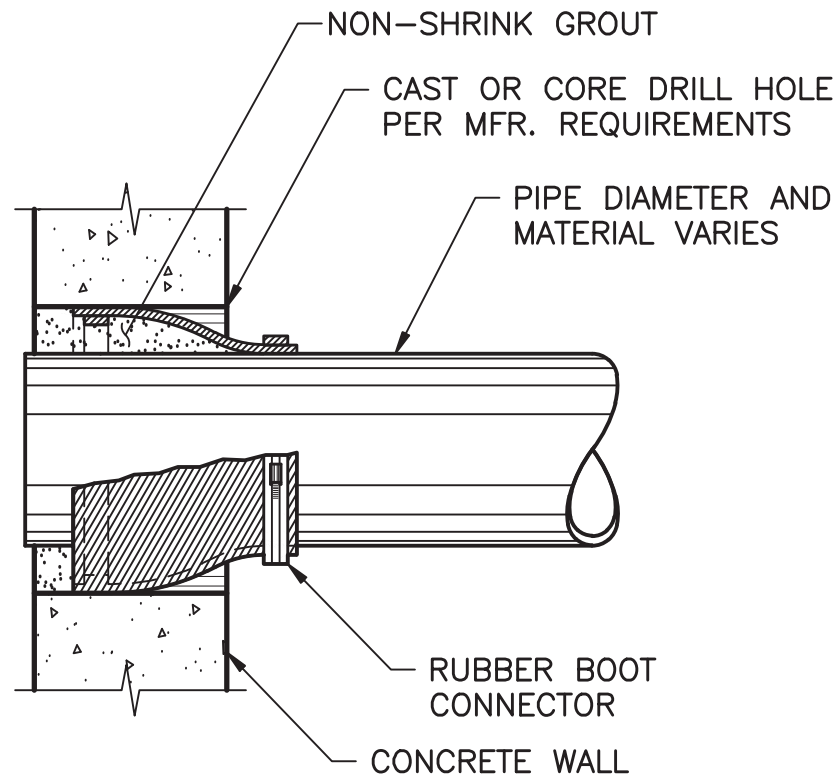


NON TRAFFIC RATED MANHOLE RING AND COVER FOR BOTH WATER TIGHT AND VENTED REQUIREMENTS
NOT TO SCALE

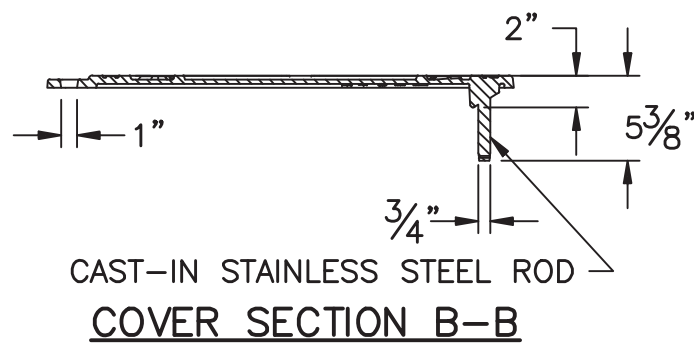


SECTION C-C

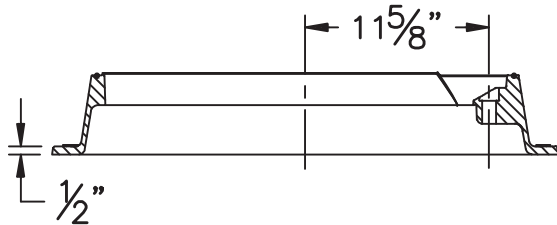
TRAFFIC RATED MANHOLE RING AND COVER FOR BOTH WATER TIGHT AND VENTED REQUIREMENTS
NOT TO SCALE



WALL PENETRATION
NOT TO SCALE

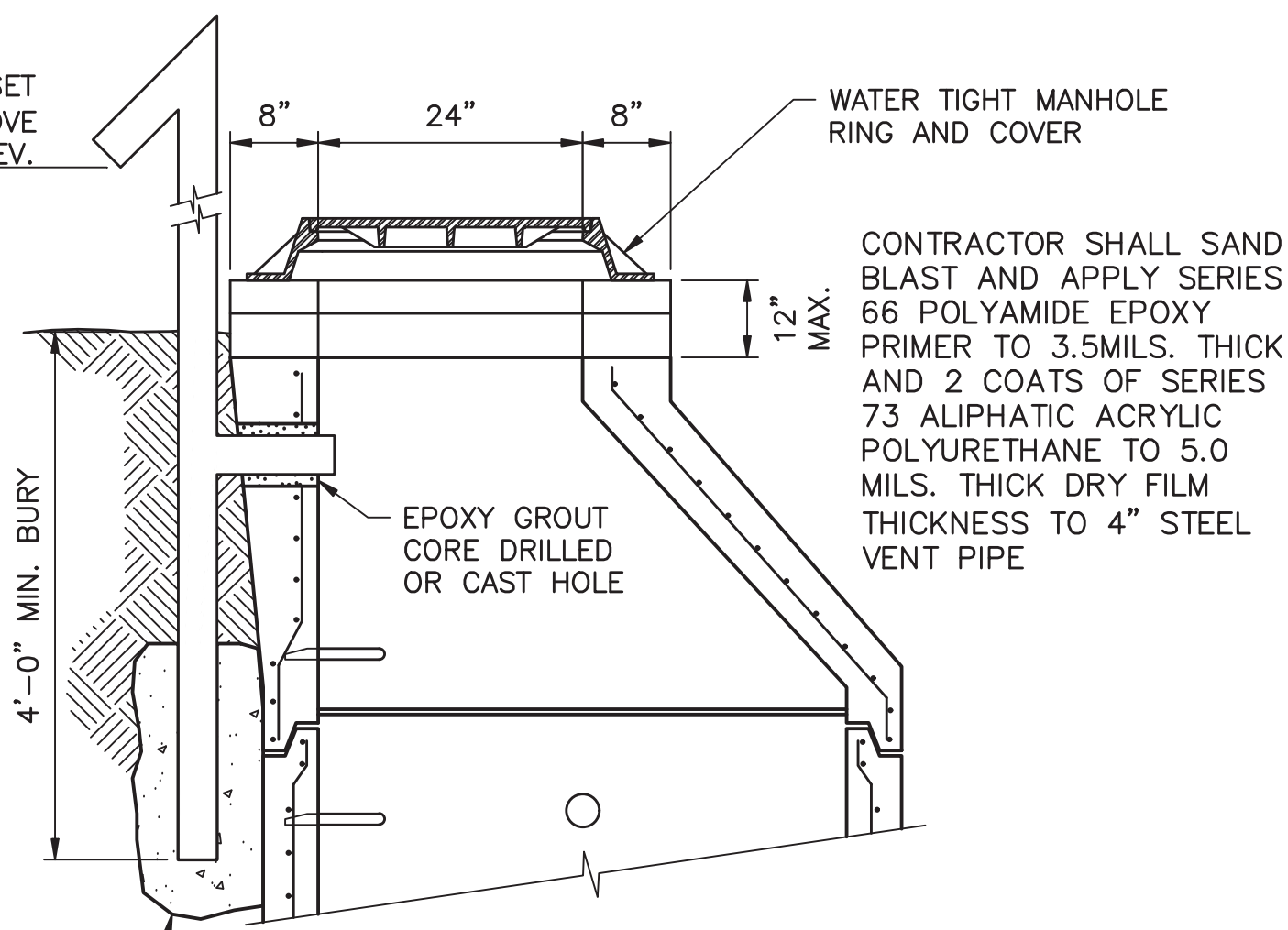


COVER SECTION B-B



FRAME SECTION B-B

4" STEEL, SCREENED PIPE VENT WHERE SHOWN ON PLANS, SET VENT 2'-0" MIN ABOVE 100 YEAR FLOOD ELEV.



MANHOLE VENT
N.T.S.

LKC

Engineering
Landscape Architecture
Surveying

LKC Engineering, PLLC
140 Aqua Shed Court
Aberdeen, NC 28315
O: 910.637.0096
F: 910.637.0096
lkceengineering.com
License No. P-1095

PROJECT REFERENCE NO.

U-3628

SHEET NO.

UC-3C

DESIGNED BY:

MAL

DRAWN BY:

RMG

CHECKED BY:

MAL

APPROVED BY:

-

REVISED:

-

NORTH CAROLINA
DEPARTMENT OF
TRANSPORTATION

UTILITIES ENGINEERING SEC.
PHONE: (919) 707-6690
FAX: (919) 250-4151

UTILITY CONSTRUCTION

**DOCUMENT NOT CONSIDERED FINAL
UNLESS ALL SIGNATURES COMPLETED**

NORTH CAROLINA
PROFESSIONAL
SEAL

036286

Mark A. Lacy
ENGINEER

7/24/2025