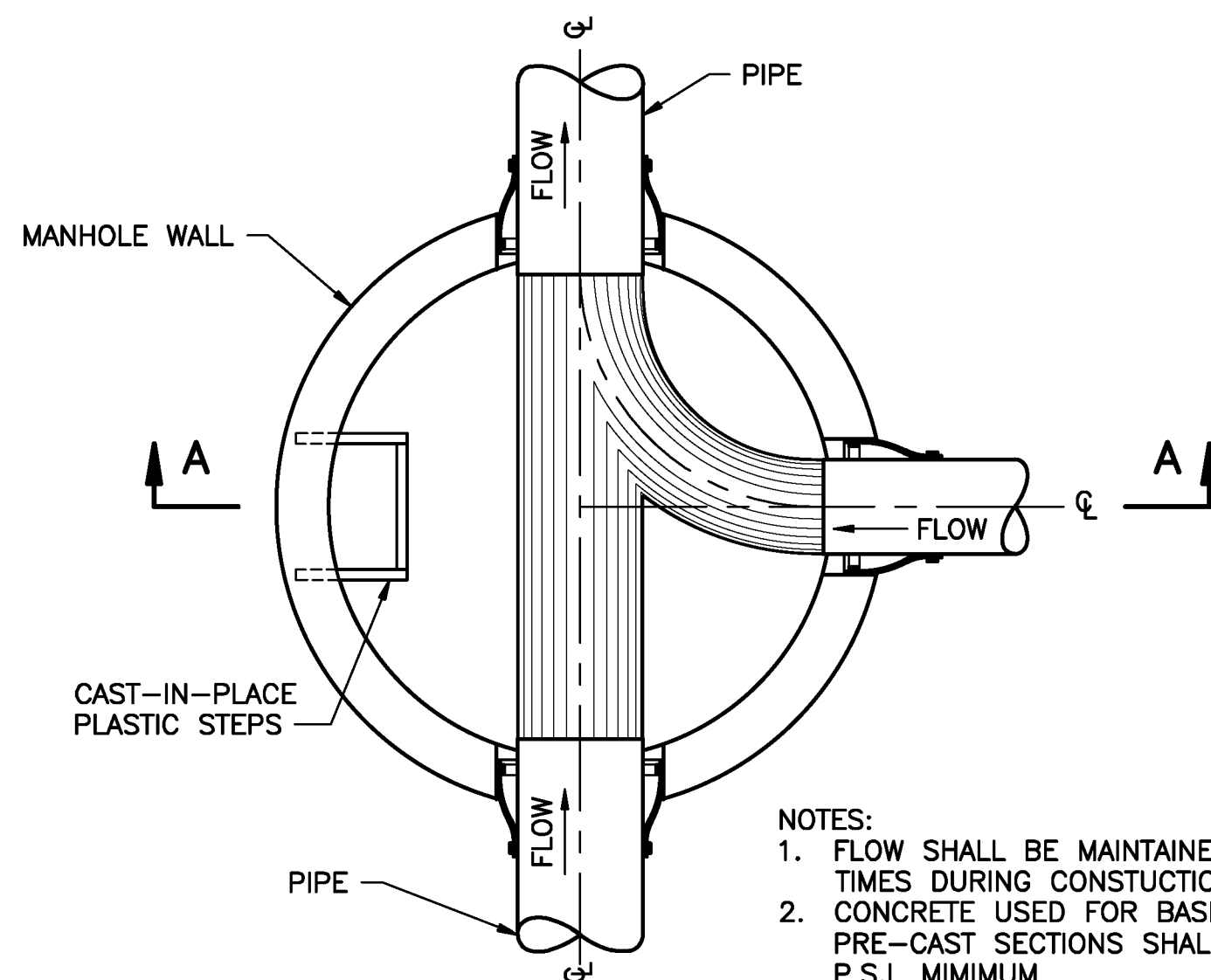


SECTION A-A

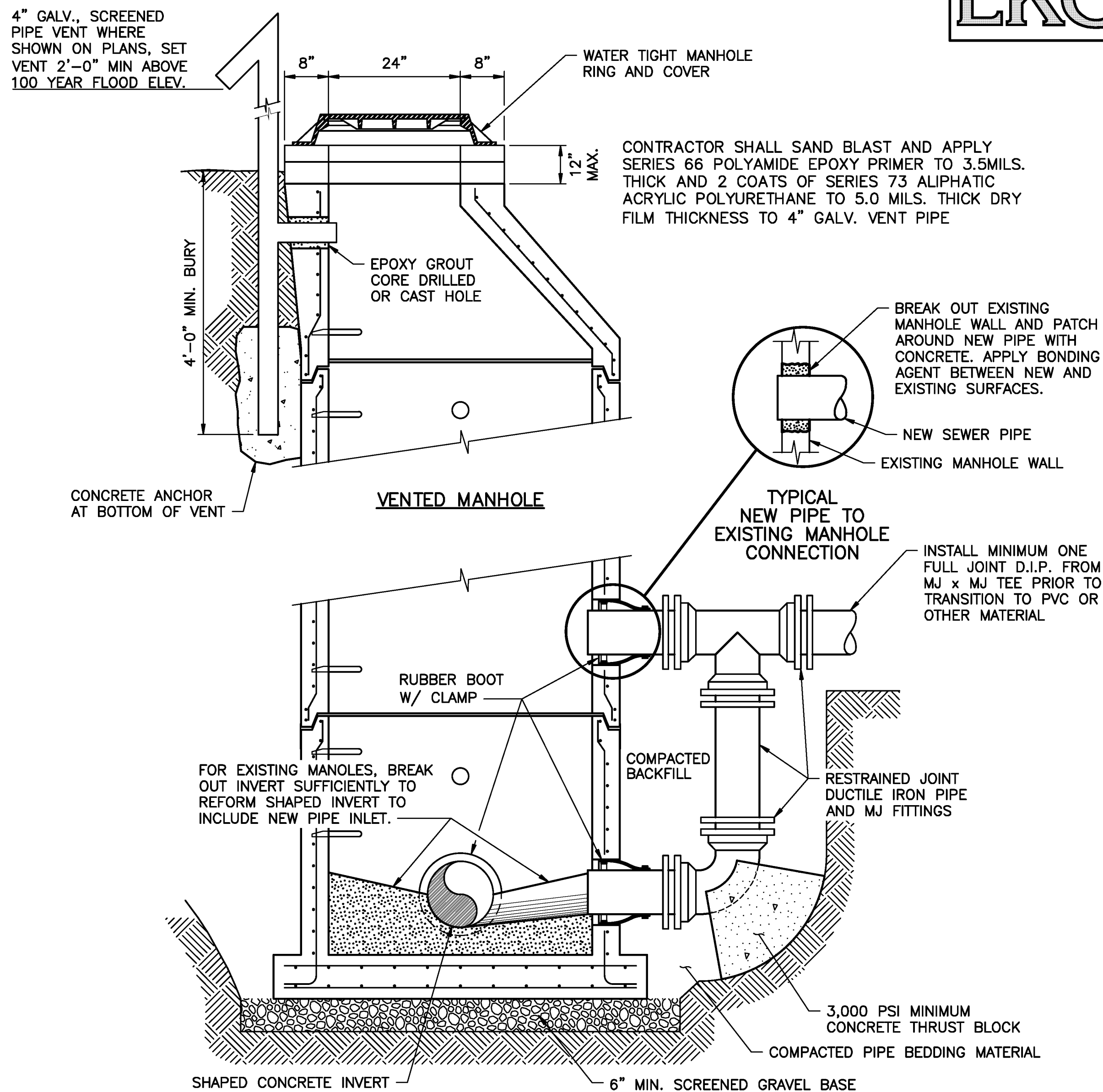


NOTE:  
MAKE REQUIRED FLOW DIRECTION  
CHANGES IN MANHOLE BY SMOOTH  
TANGENTIAL CURVE OF SHAPED  
MANHOLE INVERT.

- NOTES:**
1. FLOW SHALL BE MAINTAINED AT ALL TIMES DURING CONSTRUCTION.
  2. CONCRETE USED FOR BASE SLAB AND PRE-CAST SECTIONS SHALL BE 4000 P.S.I. MINIMUM.
  3. STONE BASE SHALL BE 6" MINIMUM.
  4. EXISTING SANITARY SEWER MAIN SHALL BE SAW-CUT TO SPRING LINE AFTER BASE CONCRETE IS PLACED AND SET.

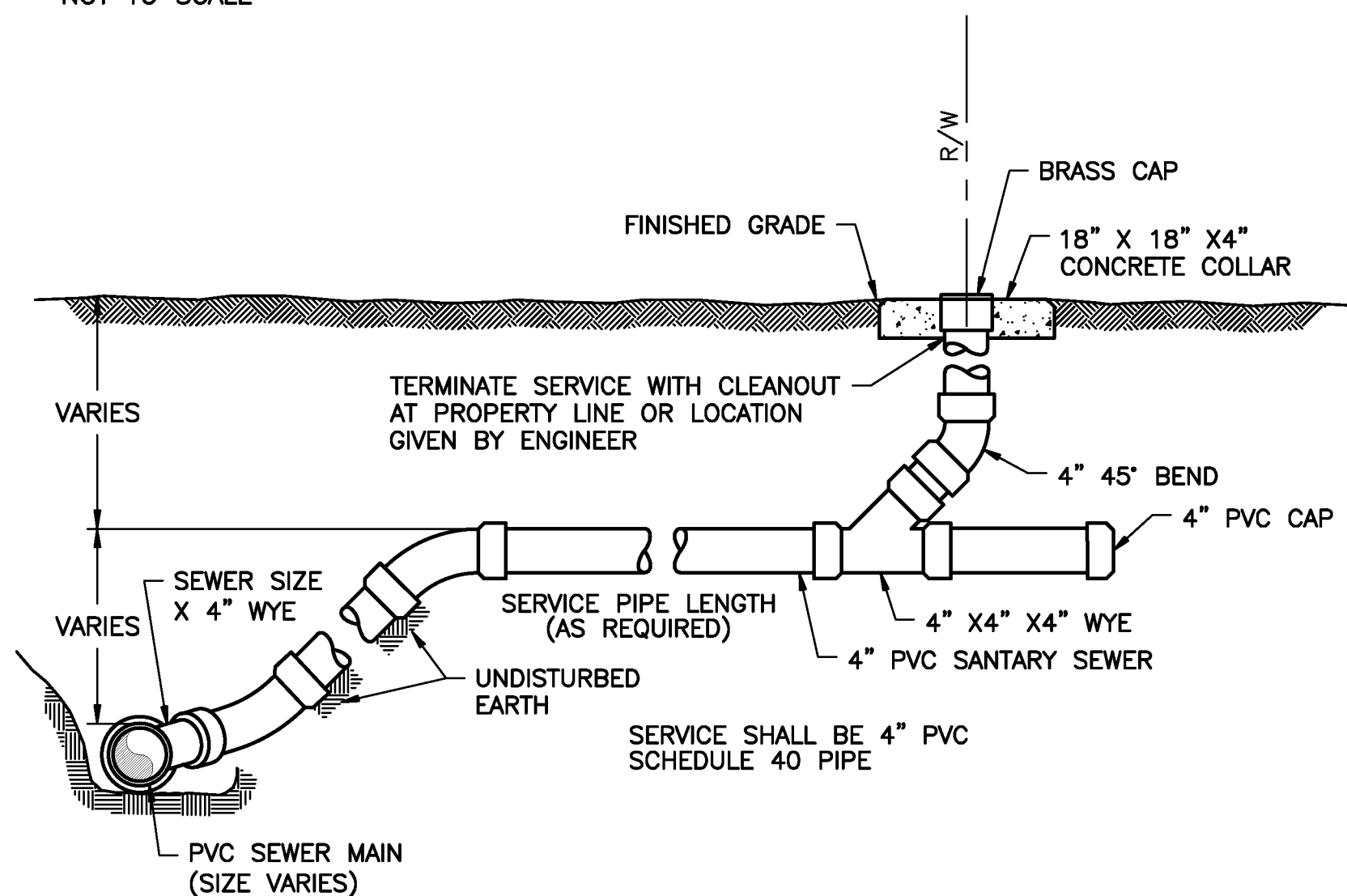
## PRECAST MANHOLE

NOT TO SCALE



NEW PRECAST CONCRETE MANHOLE OR EXISTING  
MANHOLE WITH NEW OUTSIDE DROP CONNECTION

NOT TO SCALE

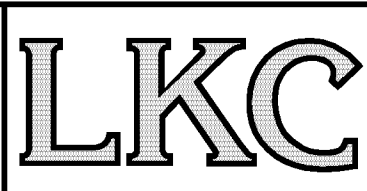



### TYPICAL SEWER CONNECTION

N.T.S.

GENERAL NOTE:

CONTRACTOR SHALL BACKFILL ALL TRENCHES, BORE PITS, AND OTHER EXCAVATIONS AT THE END OF EACH WORK DAY. NO TRENCHES, BORE PITS, OR OTHER EXCAVATION SHALL BE LEFT OPEN OVERNIGHT.

	<b>Engineering</b> <b>Landscape Architecture</b> <b>Surveying</b>	LKC Engineering, LLC 140 Aqua Shield Court Aberdeen, NC 28315 O: 910.420.1437 F: 910.617.0096 lkceengineering.com License No. P-1095	<b>PROJECT REFERENCE NO.</b>  <b>U-3628</b>	<b>SHEET NO.</b>  <b>UC-3A</b>
			<b>DESIGNED BY: MAL</b>	
			<b>DRAWN BY: RMG</b>	
			<b>CHECKED BY: MAL</b>	
			<b>APPROVED BY: -</b>	
			<b>REVISED: -</b>	
			NORTH CAROLINA DEPARTMENT OF TRANSPORTATION	
APPLY TO 3.5MILS. PHATIC THICK DRY E			UTILITIES ENGINEERING SEC. PHONE: (919) 707-6690 FAX: (919) 250-4151	7/24/2025
			<b>UTILITY CONSTRUCTION</b>	
			<b>DOCUMENT NOT CONSIDERED FINAL UNLESS ALL SIGNATURES COMPLETED</b>	