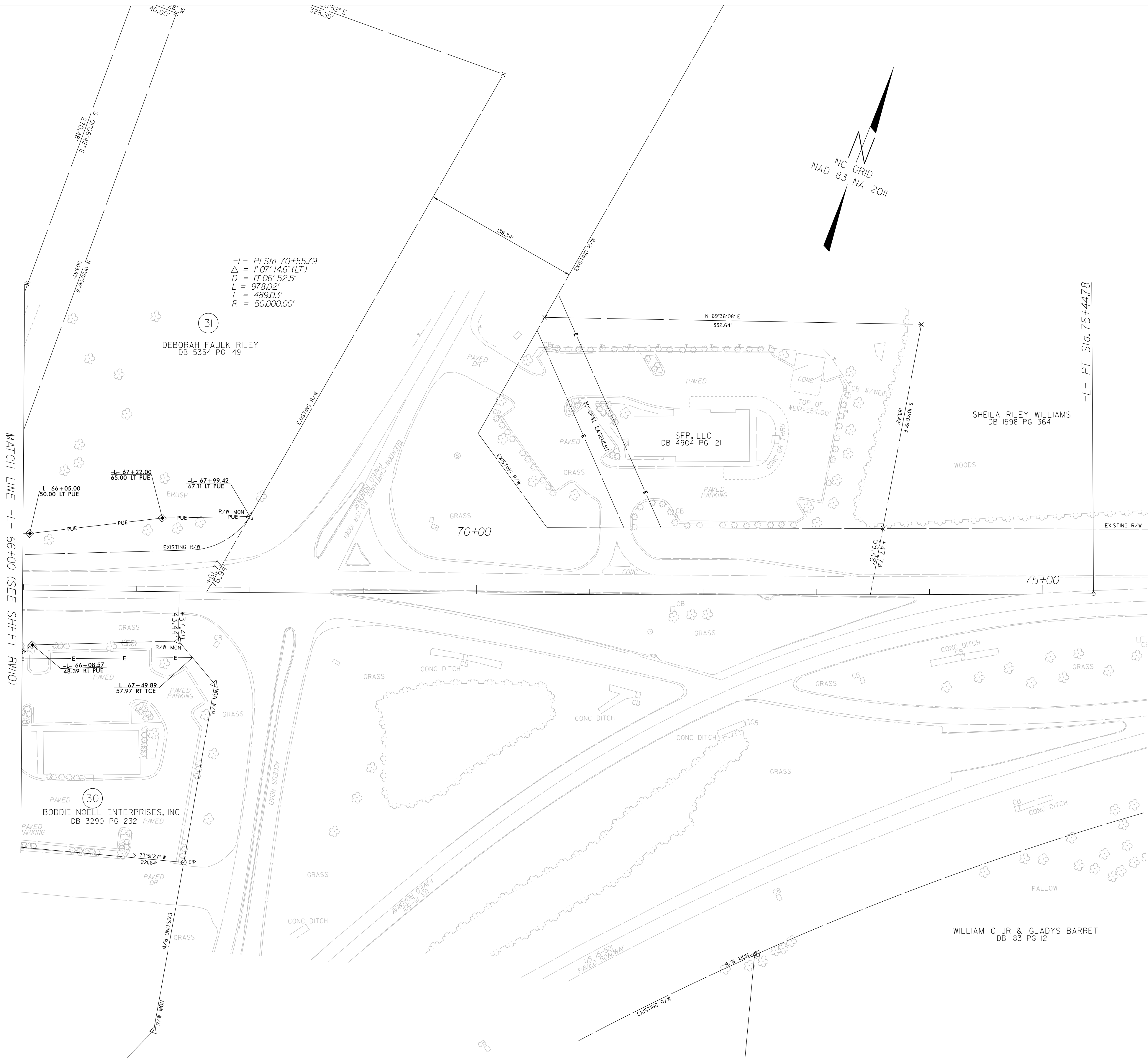


I, M. Todd Woodruff, certify that the right of way and permanent easement monumentation for this project shown herein was completed under my direct and responsible charge from an actual survey made under my supervision; that all horizontal closures had a minimum ratio of precision of 1:10,000 (Class A). Field work was performed from July 2022 to October 2022, and all coordinates are based on NAD83/2011; that this survey was performed to meet the requirements of 21NCAC 56.1600 as applicable.

This 7th day of May, 2025.
Signed by:
M. Todd Woodruff
Professional Land Surveyor L-4206

NOTES:

1. IF FURTHER INFORMATION REGARDING PROJECT CONTROL IS NEEDED PLEASE CONTACT THE LOCATION AND SURVEYS UNIT.
2. PROJECT CONTROL WAS ESTABLISHED USING GNSS, THE GLOBAL NAVIGATION SATELLITE SYSTEM.
3. RIGHT OF WAY MONUMENTATION ESTABLISHED JULY 2022 TO OCTOBER 2022 .



REVISIONS

6/2/99

08-MAY-2025 13:32
S:\Units\Div08\ASHEBORO_PROJECTS\U_projects\U3628\RW Staking\right of way sheets 250507\U3628_ls.rwl.dgn
twinduff AT LS-340031L