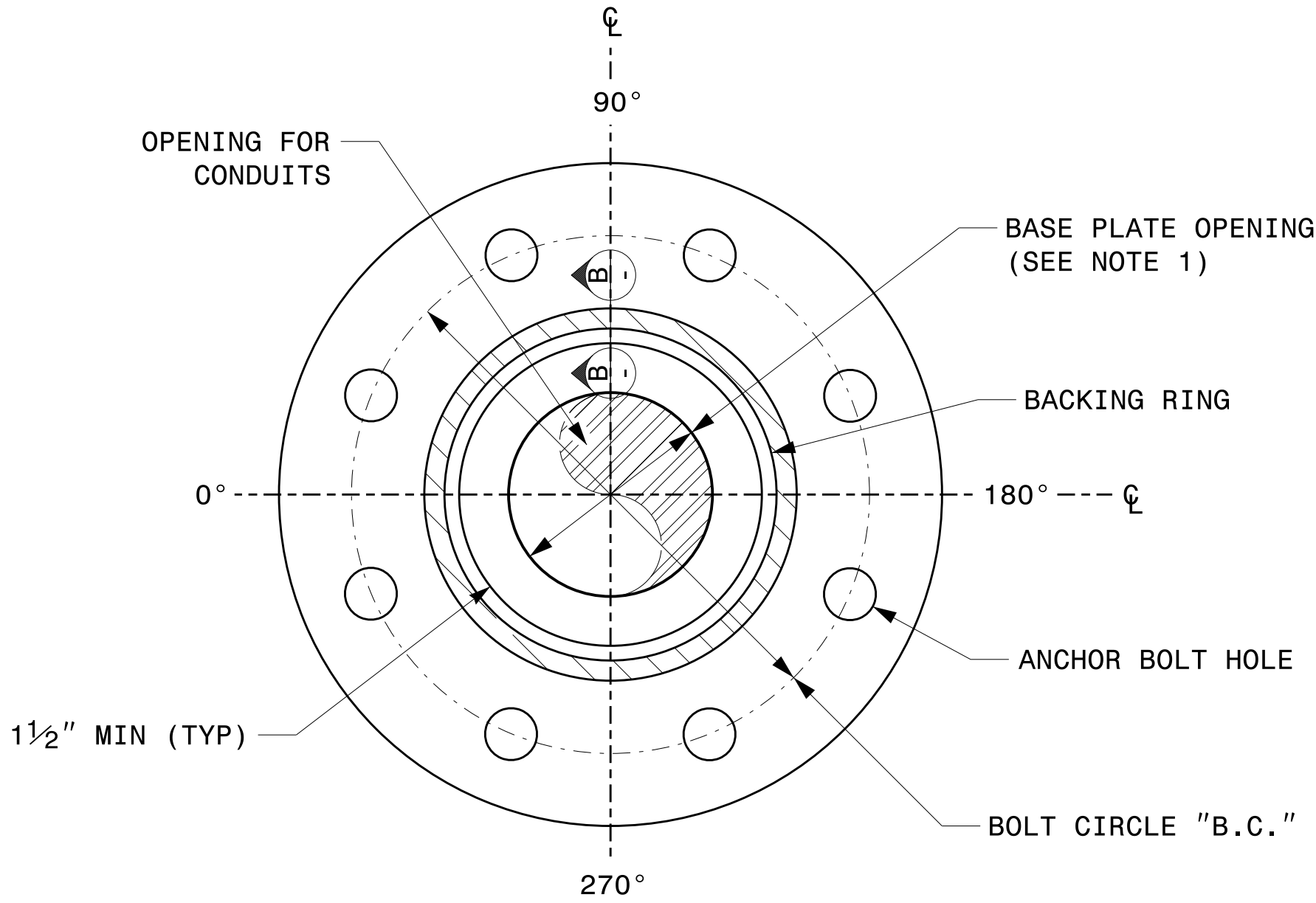


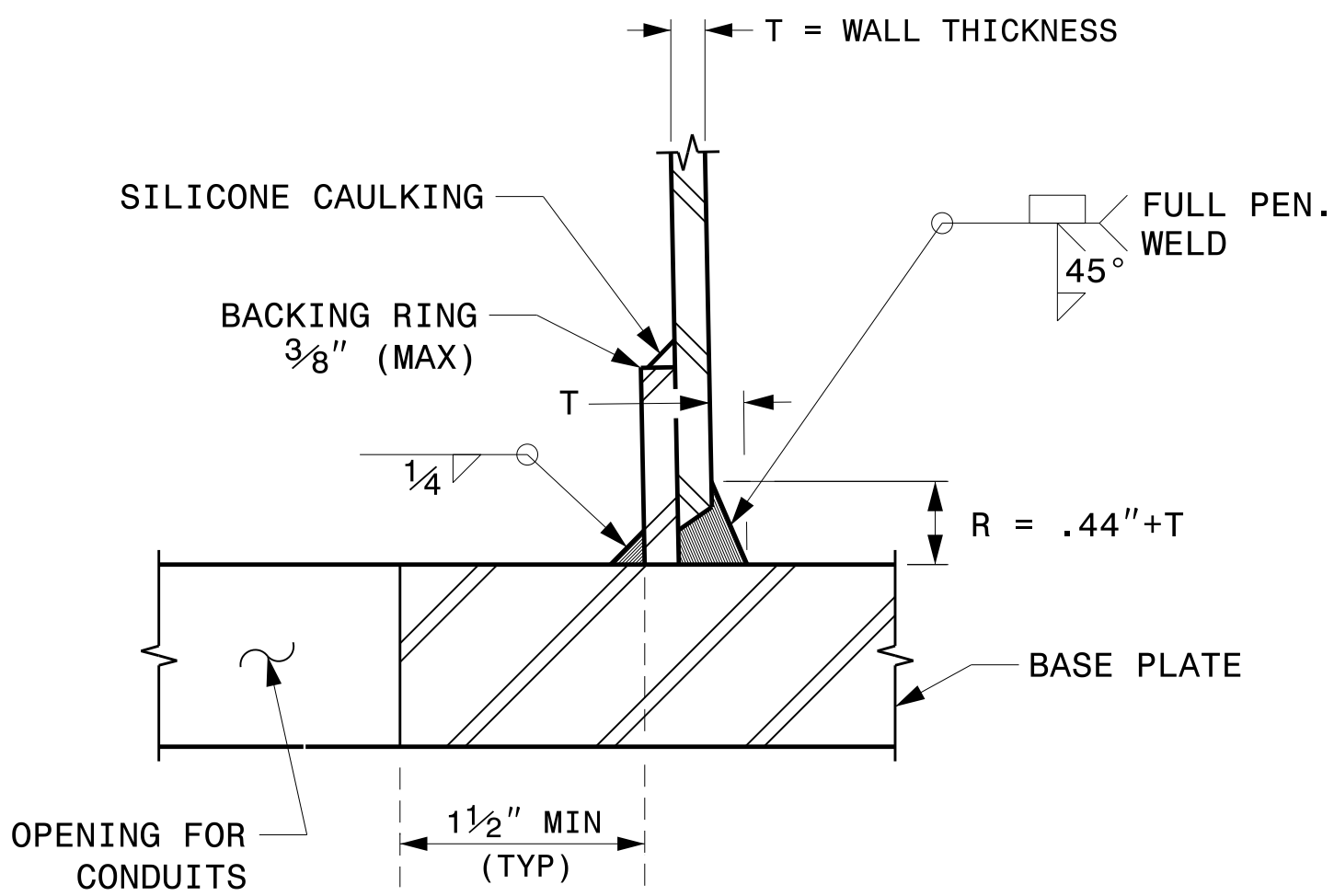
PROJECT I.D. NO.	SHEET NO.
R-5863	Sig.M4

NOTE:

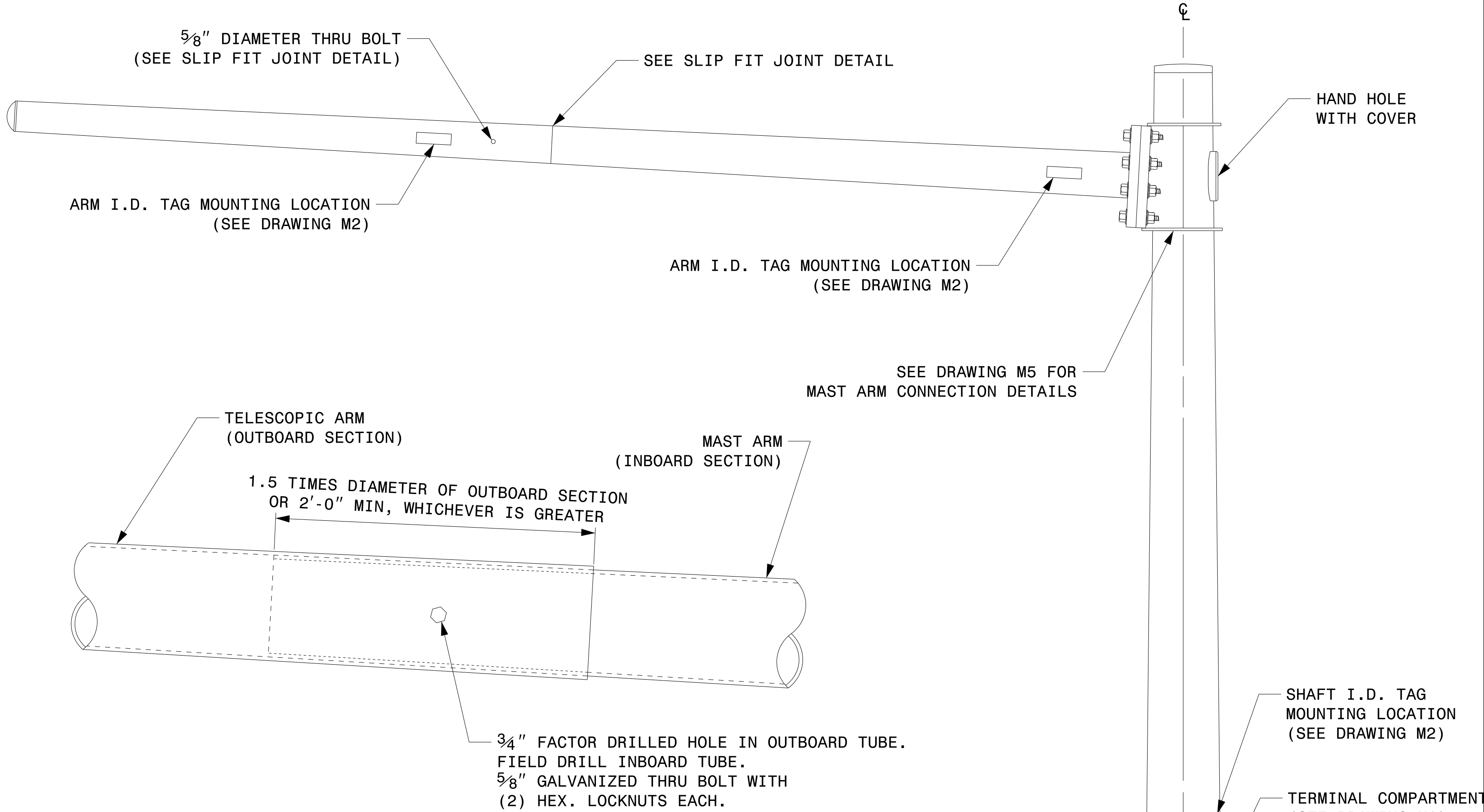
1. OPENING IN POLE BASE PLATE SHALL BE EQUAL TO POLE BASE INSIDE DIAMETER MINUS $3\frac{1}{2}$ " BUT SHALL NOT BE LESS THAN $8\frac{1}{2}$ ".



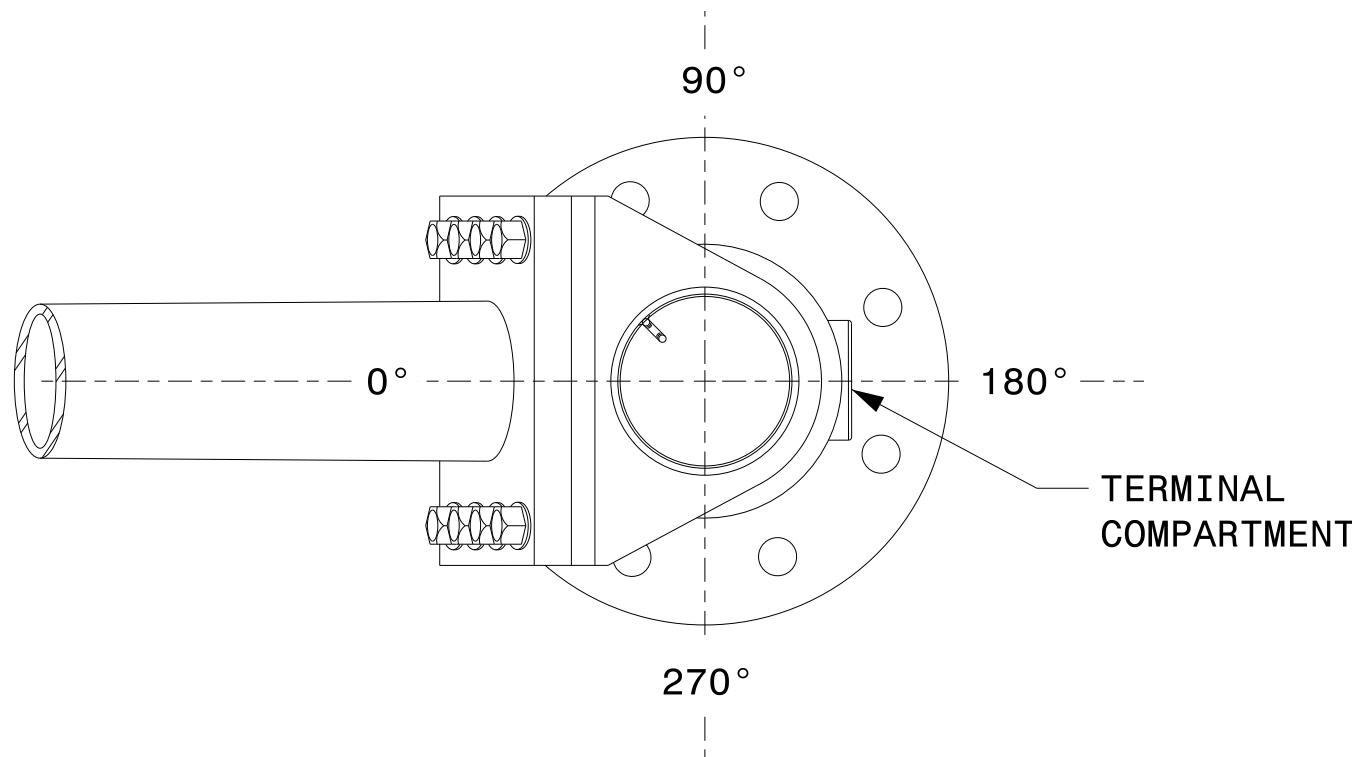
SECTION A-A
POLE BASE PLATE DETAILS



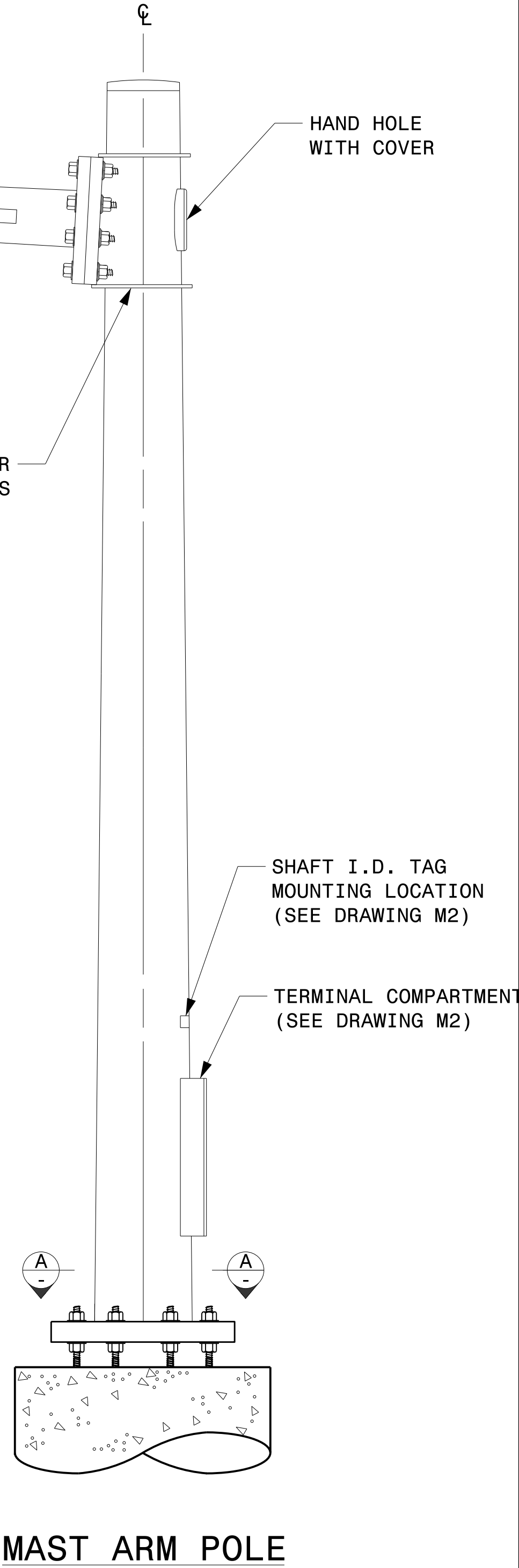
SECTION B-B
(POLE ATTACHMENT TO BASE PLATE)
FULL-PENETRATION
GROOVE WELD DETAIL



SLIP FIT JOINT DETAIL FOR MAST ARM



MAST ARM RADIAL ORIENTATION



MAST ARM POLE

<div>Prepared In the Offices of:</div> <div></div> <div>750 N. Greenfield Pkwy, Garner, NC 27529</div> <div>SCALE: 0 NA NONE</div>	<div>Typical Fabrication Details For Mast Arm Poles</div> <div>PLAN DATE: SEPTEMBER 2023 DESIGNED BY: K.C. DURIGON</div> <div>PREPARED BY: K.C. DURIGON REVIEWED BY: D.C. SARKAR</div> <div>REVISIONS: INIT. DATE</div>	<div>SEAL</div> <div></div> <div>DocuSigned by: Kevin Durigon</div> <div>DATE: 09/21/2023</div>	