

TYPICAL SECTION NO. 1

TRANSITION FROM EXISTING TO TYPICAL SECTION NO. 1:

-L- STA 10+00.00 TO 10+50.00

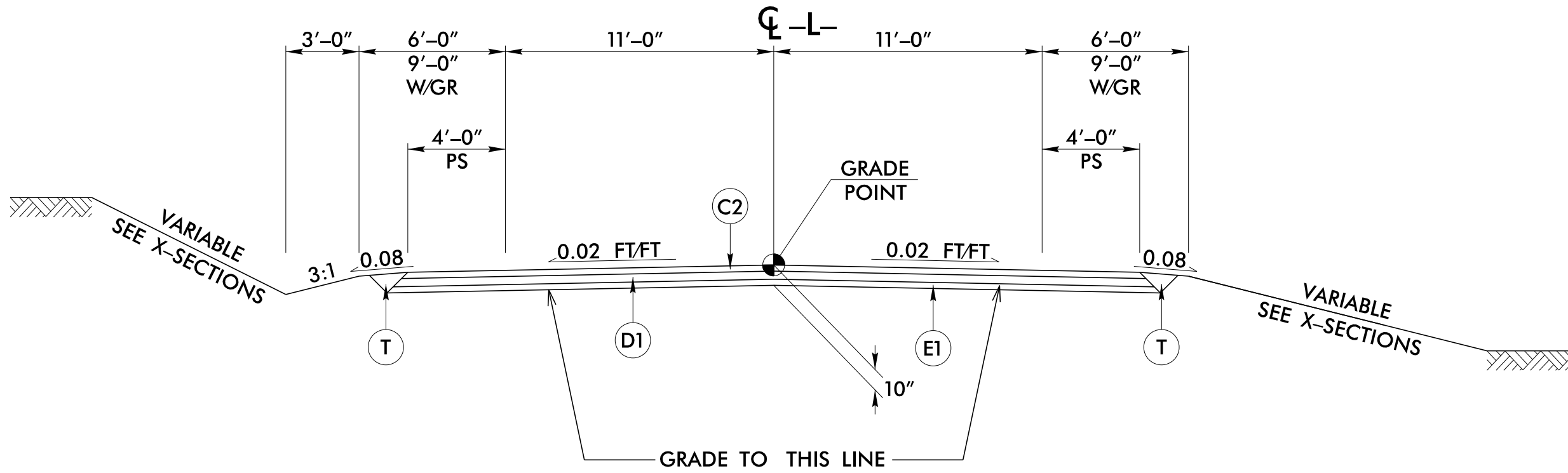
USE TYPICAL SECTION NO. 1:

-L- STA 10+50.00 TO 12+25.00

-L- STA 25+80.00 TO 32+00.00

TRANSITION FROM TYPICAL SECTION NO. 1 TO EXISTING:

-L- STA 32+00.00 TO 32+50.00

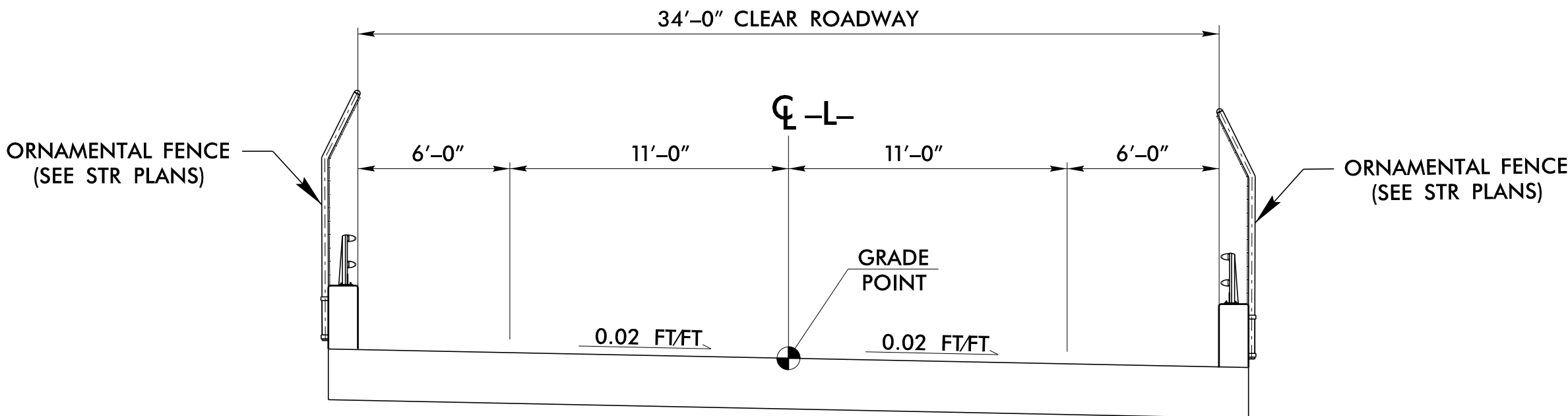


TYPICAL SECTION NO. 2

USE TYPICAL SECTION NO. 2:

-L- STA 12+25.00 TO 16+09.00 (BEGIN BRIDGE)

-L- STA 21+52.00 (END BRIDGE) TO 25+80.00

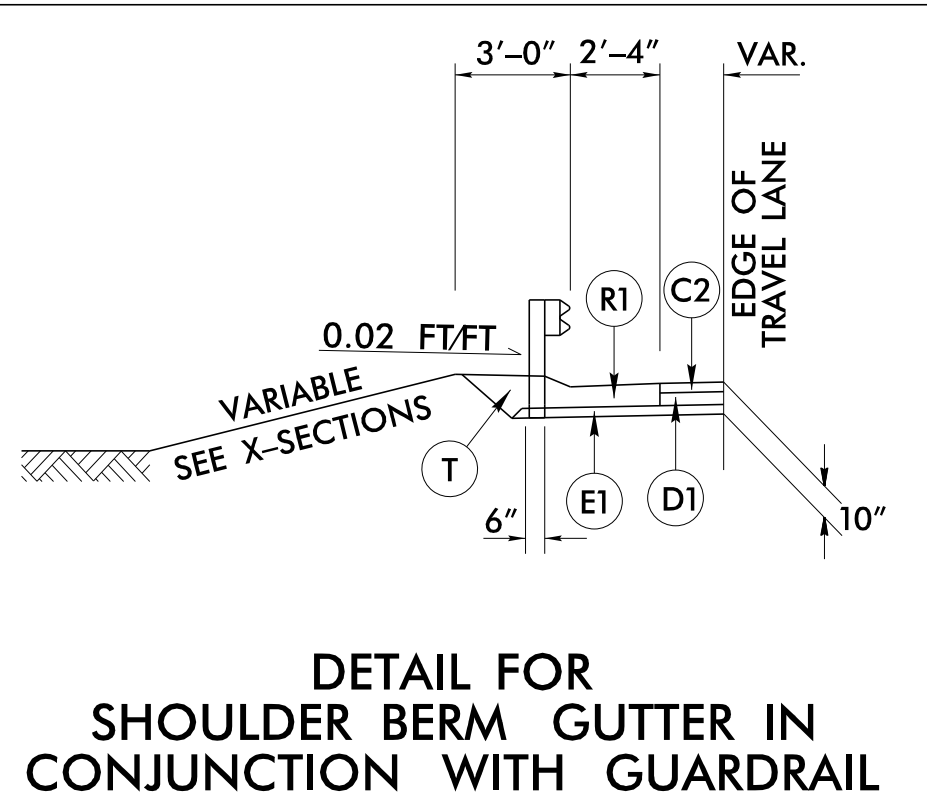


TYPICAL SECTION NO. 3

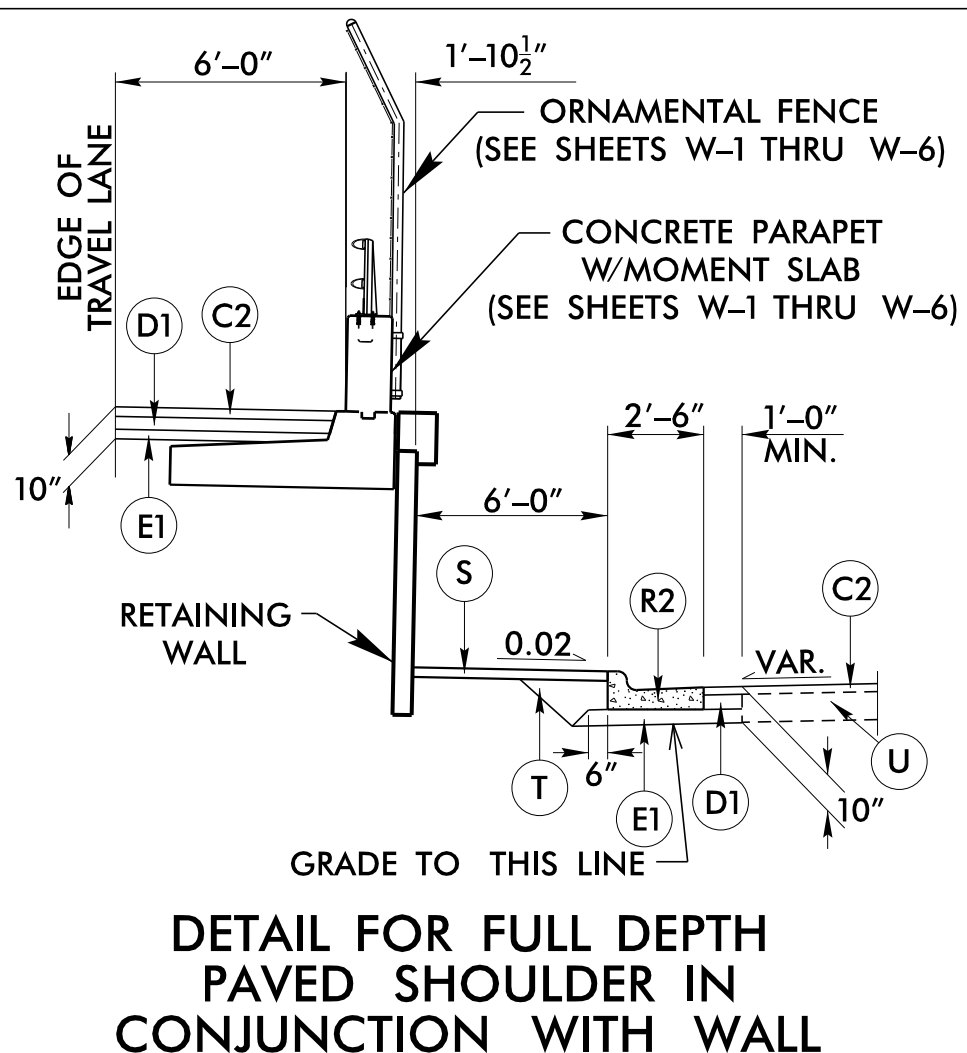
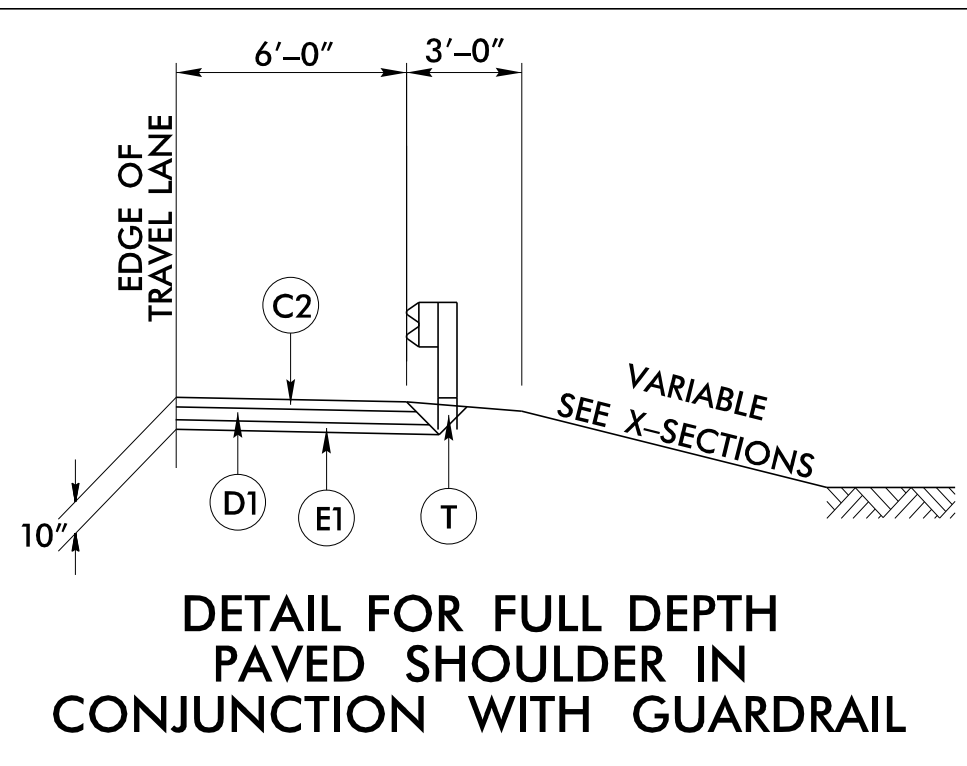
USE TYPICAL SECTION NO. 3:

-L- STA 16+09.00 (BEGIN BRIDGE) TO 21+52.00 (END BRIDGE)

NOTE: SEE STRUCTURE PLANS FOR STRUCTURE CONSTRUCTION DETAILS

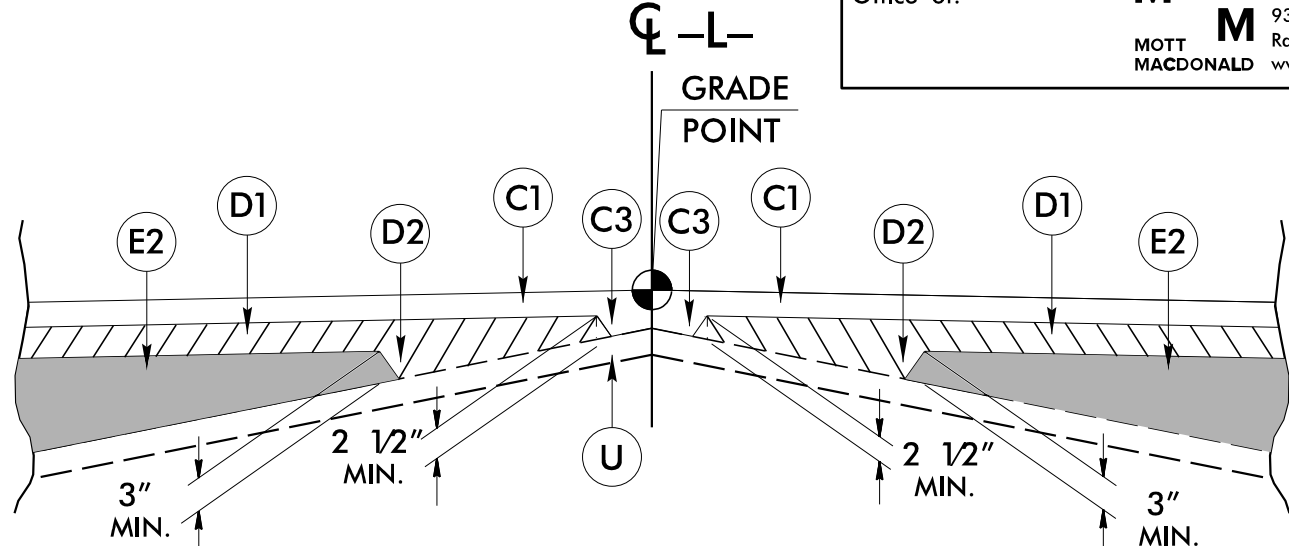
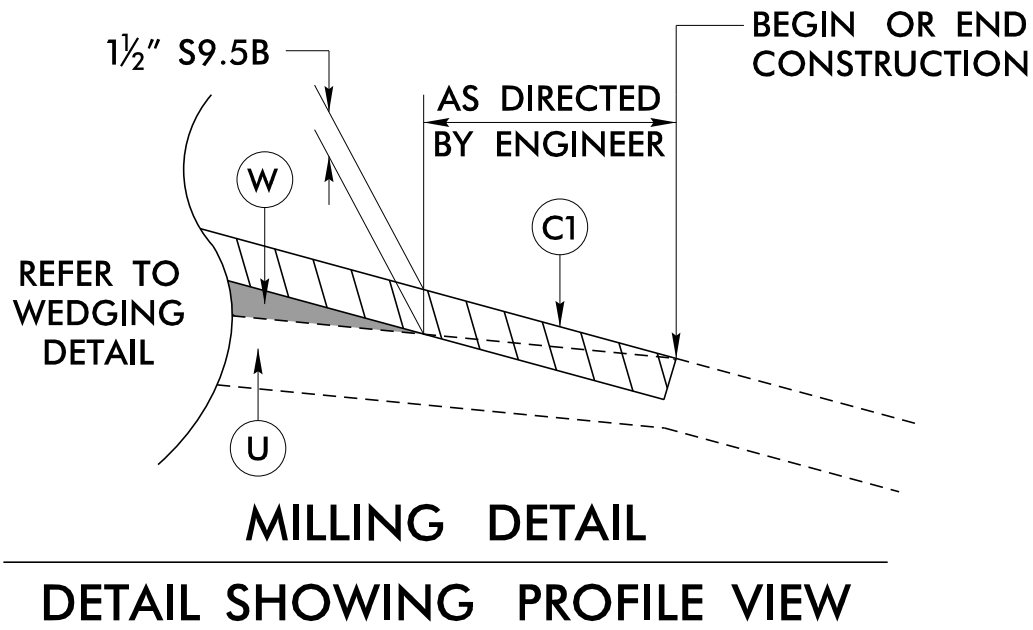


-L- STA 11+03.00 TO 15+94.00 RT
-DR1- STA 11+29.26 RT TO -L- STA 15+94.00 LT



-L- STA 21+47.25 TO 24+74.79 RT
-L- STA 21+47.25 TO 24+00.00 LT

NOTE: SIDEWALK AND CURB ONLY
LOCATED ON RT SIDE



FINAL PAVEMENT SCHEDULE
(PAVEMENT DESIGN DATED: 11/21/2024)

C1	PROP. APPROX. 1 1/2" ASPHALT CONCRETE SURFACE COURSE, TYPE S9.5B, AT AN AVERAGE RATE OF 165 LBS. PER SQ. YD.
C2	PROP. APPROX. 3" ASPHALT CONCRETE SURFACE COURSE, TYPE S9.5B, AT AN AVERAGE RATE OF 165 LBS. PER SQ. YD. IN EACH OF TWO LAYERS
C3	PROP. VAR. DEPTH ASPHALT CONCRETE SURFACE COURSE, TYPE S9.5B, AT AN AVERAGE RATE OF 110 LBS. PER SQ. YD. PER 1" DEPTH. TO BE PLACED IN LAYERS NOT LESS THAN 1" IN DEPTH OR GREATER THAN 1 1/2" IN DEPTH
D1	PROP. APPROX. 4" ASPHALT CONCRETE INTERMEDIATE COURSE, TYPE I19.0C, AT AN AVERAGE RATE OF 456 LBS. PER SQ. YD.
D2	PROP. VAR. DEPTH ASPHALT CONCRETE INTERMEDIATE COURSE, TYPE I19.0C, AT AN AVERAGE RATE OF 114 LBS. PER SQ. YD. PER 1" DEPTH, TO BE PLACED IN LAYERS NOT LESS THAN 2 1/2" IN DEPTH OR GREATER THAN 4" IN DEPTH
E1	PROP. APPROX. 3" ASPHALT CONCRETE BASE COURSE, TYPE B25.0C, AT AN AVERAGE RATE OF 342 LBS. PER SQ. YD.
E2	PROP. VAR. DEPTH ASPHALT CONCRETE BASE COURSE, TYPE B25.0C, AT AN AVERAGE RATE OF 114 LBS. PER SQ. YD. PER 1" DEPTH TO BE PLACED IN LAYERS NOT LESS THAN 4" IN DEPTH OR GREATER THAN 5 1/2" IN DEPTH
J	6" PROP. AGGREGATE BASE COURSE
R1	SHOULDER BERM GUTTER
R2	2'-6" CURB & GUTTER
S	CONCRETE SIDEWALK
T	EARTH MATERIAL
U	EXISTING PAVEMENT
W	WEDGING (SEE DETAIL SHOWING METHOD OF WEDGING)

NOTE: PAVEMENT EDGE SLOPES ARE 1:1 UNLESS SHOWN OTHERWISE.