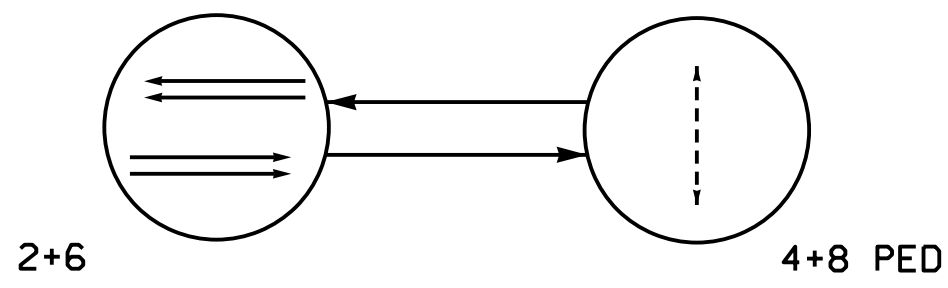
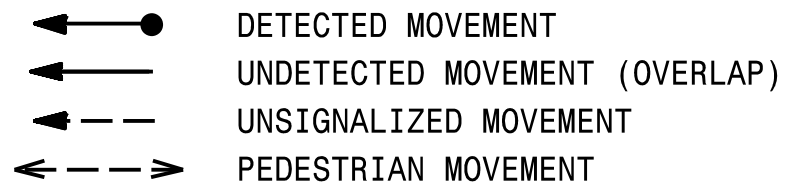


PHASING DIAGRAM



PHASING DIAGRAM DETECTION LEGEND

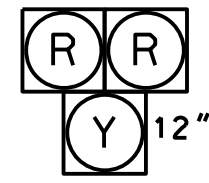


SIGNAL FACE	PHASE							
	2+6 DARK	ACTIVATION	STEADY YELLOW	ALL RED	4+8 PED	4+8 PED CLEAR	FLUSH	
21, 22	DRK	FY	Y	R	R	FR	Y	
61, 62	DRK	FY	Y	R	R	FR	Y	
P41, P42	DW	DW	DW	DW	W	DW	DRK	
P81, P82	DW	DW	DW	DW	W	DW	DRK	

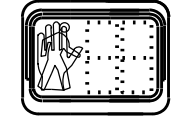
*Alternating Flash
Y - Steady Yellow
FY - Flashing Yellow
R - Steady Red
FR - Flashing Red
DRK - Dark
W - Walk
DW - Don't Walk

SIGNAL FACE I.D.

All Heads L.E.D.



21, 22
61, 62



P41, P42
P81, P82

2 Phase
Semi-Actuated
Pedestrian Hybrid Beacon
SR 3174/1501 (Idlewild Road) CLS

NOTES

- Refer to "Roadway Standard Drawings NCDOT" dated January 2024 and "Standard Specifications for Roads and Structures" dated January 2024.
- Program pedestrian heads to countdown the flashing "Don't Walk" time only.
- Enable Ped Clear During Red for phase 4 PED and phase 8 PED.
- Locate the Pedestrian and Crosswalk advance signs (see Figure 1) in accordance with Table 2C-3 in Section 2C.04 of the 2023 MUTCD or as otherwise directed by the Engineer.
- Maximum times shown in timing chart are for free-run operation only. Coordinated system timing values supersede these values.

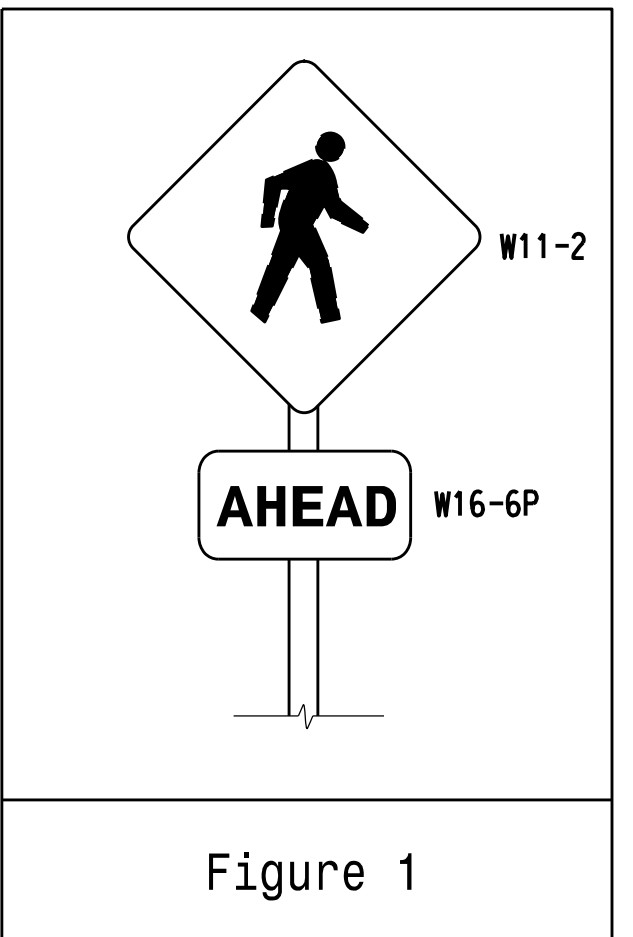


Figure 1

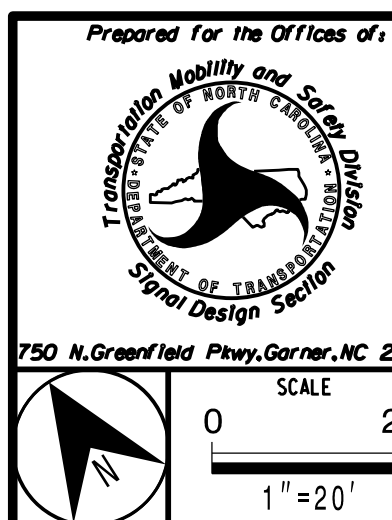
LEGEND

PROPOSED	EXISTING
Traffic Signal Head	N/A
Modified Signal Head	N/A
Sign	N/A
Pedestrian Signal Head With Push Button & Sign	N/A
Type II Signal Pedestal	N/A
Metal Pole with Mastarm Controller & Cabinet	N/A
Junction Box	N/A
2-in Underground Conduit	N/A
Directional Drill	N/A
Right of Way	N/A
Directional Arrow	N/A
Curb Ramp	N/A
"STOP ON RED - YIELD ON FLASHING RED AFTER STOP" Sign (R10-23a)	N/A
Pedestrian Crossing Sign (W11-2) w/ "AHEAD" Plaque (W16-9P) (See Figure 1)	N/A

FEATURE	PHASE			
	2	4 PED	6	8 PED
Walk *	-	7	-	7
Ped Clear	-	24	-	24
Min Green *	10	7	10	7
Passage *	-	-	-	-
Max I *	30	7	30	7
Yellow Change	3.0	3.0	3.0	3.0
Red Clear	1.1	0.0	1.1	0.0
Added Initial *	-	-	-	-
Maximum Initial *	-	-	-	-
Time Before Reduction *	-	-	-	-
Time To Reduce *	-	-	-	-
Minimum Gap	-	-	-	-
Advance Walk	-	-	-	-
Pre Clearance	5	-	5	-
Non Lock Detector	-	X	-	X
Vehicle Recall	MIN RECALL	-	MIN RECALL	-
Dual Entry	-	-	-	-

* These values may be field adjusted. Do not adjust Min Green and Extension times for phases 2 and 6 lower than what is shown. Min Green for all other phases should not be lower than 4 seconds.

New Installation



PLANS PREPARED IN THE OFFICE OF:
Kimley-Horn
NC License #F-0102
421 Fayetteville Street, Suite 600
Raleigh, NC 27601
(919) 677-2000

SR 3174 (Idlewild Road) Pedestrian Hybrid Beacon East of SR 3175 (Stallings Road) / Davis Trace Drive	
Division 10 Mecklenburg County Stallings	
PLAN DATE: February 2025	REVIEWED BY: KP Baumann
PREPARED BY: SP Pennington	REVIEWED BY:
REVISIONS	
INIT.	DATE

DOCUMENT NOT CONSIDERED
FINAL UNLESS ALL
SIGNATURES COMPLETED

