



SURVEY CONTROL SHEET
W/ EXISTING CENTERLINE ALIGNMENTS PRIOR TO CONSTRUCTION

PROJECT REFERENCE NO.	SHEET NO.
BP10-R013	RW02C-1
Location and Surveys	
<div><div></div><div><div>WSP USA Inc.</div><div>128 TALBERT ROAD</div><div>SUITE A</div><div>MOORESVILLE, NC 28117</div><div>TEL: 704.662.0100</div><div>WWW.WSP.COM</div></div></div>	
PROJECT SURVEYOR	
<div><div><div>THEODORE C. BENBOW</div><div>PROFESSIONAL LAND SURVEYOR</div><div>SEAL L-5368</div></div></div>	
DOCUMENT NOT CONSIDERED FINAL UNLESS ALL SIGNATURES COMPLETED	

I, Theodore C. Benbow, PLS, certify that the Project Control was verified under my supervision from an actual GPS survey made under my supervision and the following information was used to perform the survey:

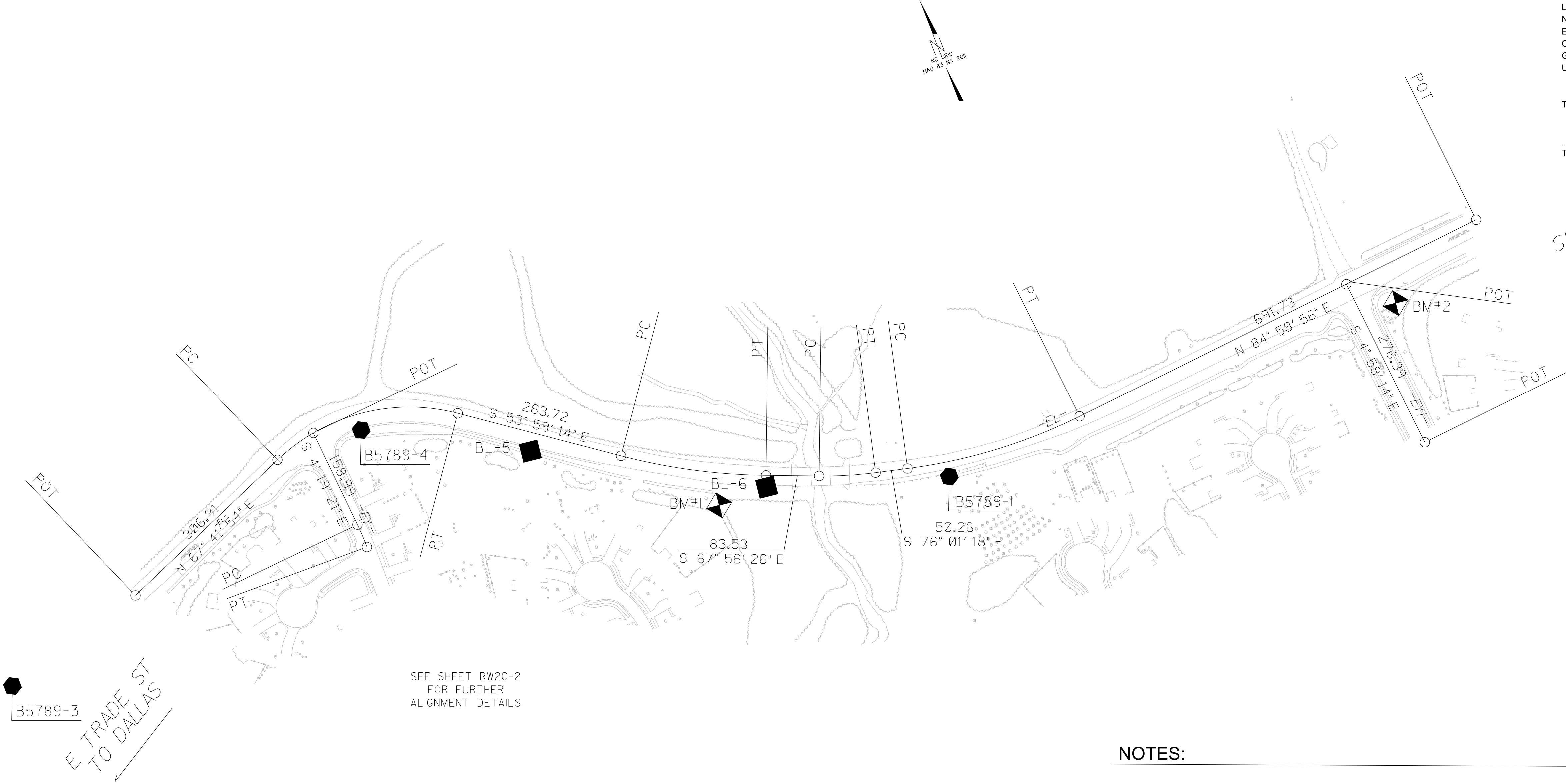
Class of survey: **AA**
Type of GPS field procedure: RTN
Dates of survey: 6/26/23 - 7/17/23
Datum/Epoch: 2023.199
Published/Fixed-control use: N/A
Localized around: B5789-1
Northing: 519855.487
Easting: 1423266.095
Combined grid factor: 0.9998480764
Geoid model: 12
Units: US Survey Feet

This 28th day of May, 2025.

Designed by:

621CD0887070436
Theodore C. Benbow L-5368



B5789-2



NOTES:

1. PROJECT CONTROL WAS ESTABLISHED USING GNSS, THE GLOBAL NAVIGATION SATELLITE SYSTEM.
2. THE SURVEY CONTROL DATA FOR THIS PROJECT HAS BEEN COMPILED FROM VARIOUS SOURCES. IF FURTHER INFORMATION REGARDING PROJECT CONTROL IS NEEDED, PLEASE CONTACT THE LOCATION AND SURVEYS UNIT.