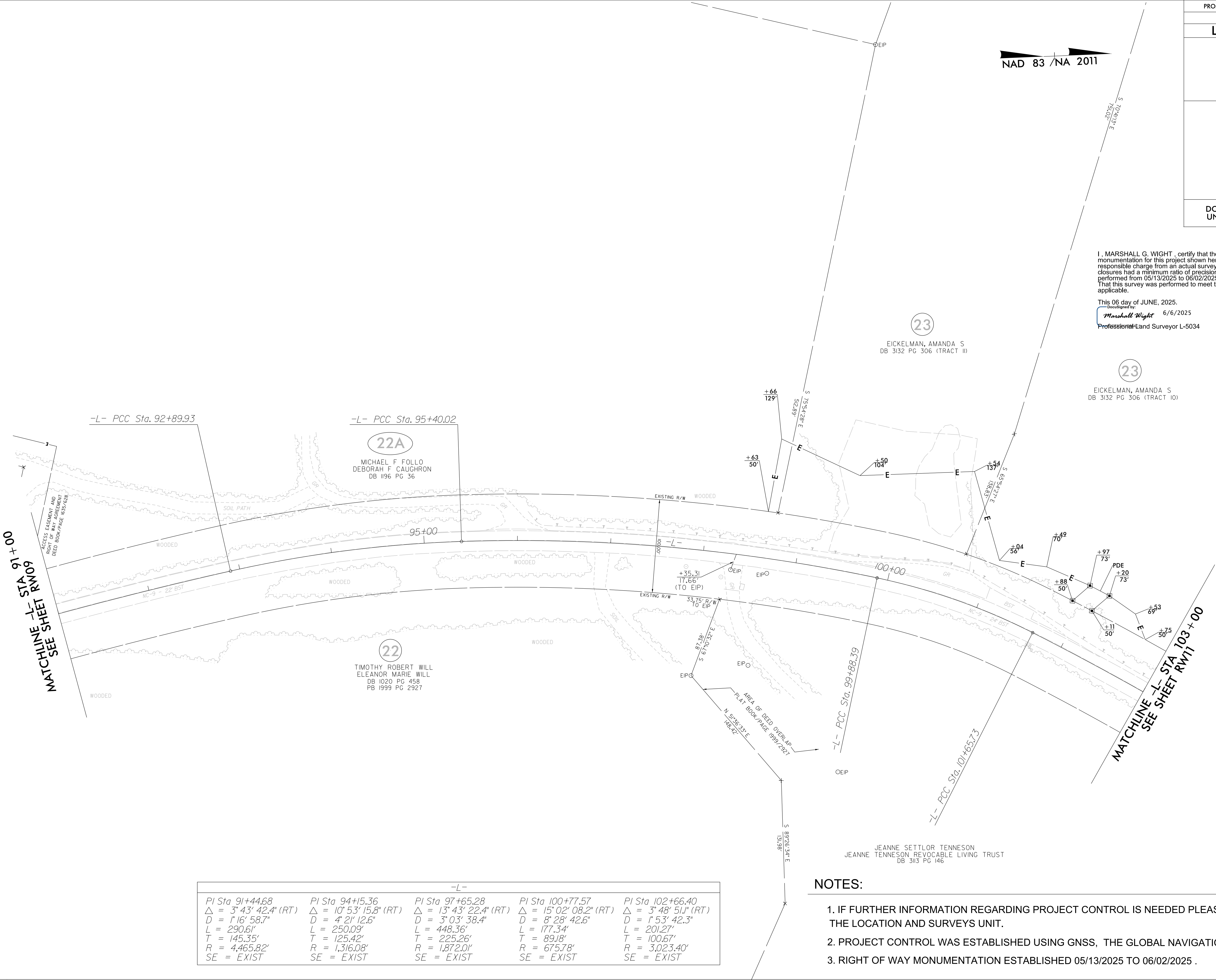


REVISIONS



-L-				
PI Sta 91+44.68	PI Sta 94+15.36	PI Sta 97+65.28	PI Sta 100+77.57	PI Sta 102+66.40
$\Delta = 3^{\circ} 43' 42.4''$ (RT)	$\Delta = 10^{\circ} 53' 15.8''$ (RT)	$\Delta = 13^{\circ} 43' 22.4''$ (RT)	$\Delta = 15^{\circ} 02' 08.2''$ (RT)	$\Delta = 3^{\circ} 48' 51.1''$ (RT)
D = 1' 16' 58.7"	D = 4' 21' 12.6"	D = 3' 03' 38.4"	D = 8' 28' 42.6"	D = 1' 53' 42.3"
L = 290.61'	L = 250.09'	L = 448.36'	L = 177.34'	L = 201.27'
T = 145.35'	T = 125.42'	T = 225.26'	T = 89.18'	T = 100.67'
R = 4,465.82'	R = 1,316.08'	R = 1,872.01'	R = 675.78'	R = 3,023.40'
SE = EXIST	SE = EXIST	SE = EXIST	SE = EXIST	SE = EXIST

NOTES:

1. IF FURTHER INFORMATION REGARDING PROJECT CONTROL IS NEEDED PLEASE CONTACT THE LOCATION AND SURVEYS UNIT.
2. PROJECT CONTROL WAS ESTABLISHED USING GNSS, THE GLOBAL NAVIGATION SATELLITE SYSTEM.
3. RIGHT OF WAY MONUMENTATION ESTABLISHED 05/13/2025 TO 06/02/2025 .