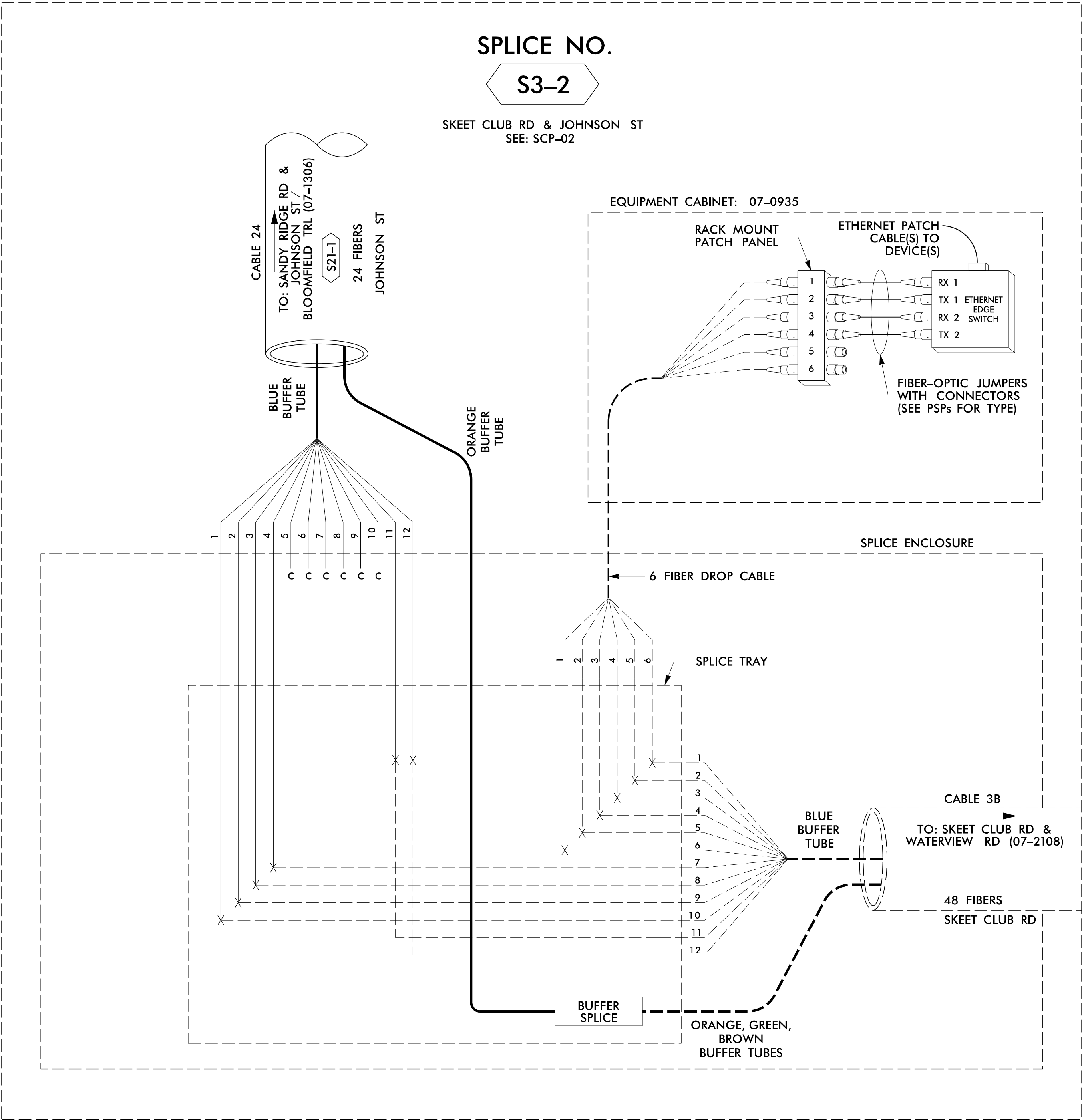


PROJECT REFERENCE NO.	SHEET NO.
U-4758	SCP-23



NOTES:

- FIVE (5) DAYS PRIOR TO BEGINNING WORK AT SPLICE LOCATION, CONTACT CITY OF HIGH POINT TRAFFIC DEPARTMENT AT (336) 345-4616 TO ARRANGE FOR THE CITY TO PROGRAM THE FIELD ETHERNET SWITCH WITH THE NECESSARY NETWORK CONFIGURATION DATA, INCLUDING BUT NOT LIMITED TO: THE PROJECT IP ADDRESS, DEFAULT GATEWAY, SUBNET MASK AND VLAN ID INFORMATION. NOTIFY THE CITY TRAFFIC DEPARTMENT AFTER ALL WORK IS PERFORMED TO ENSURE THAT THE FIBER CIRCUITS ARE FUNCTIONING PROPERLY. WORK IS NOT COMPLETE UNTIL THE SYSTEM IS UP AND OPERATIONAL ON THE CENTRAL NETWORK.
- UNUSED FIBERS LEFT COILED AND STORED IN SPLICE TRAY.
- UNUSED BUFFER TUBES LEFT COILED AND STORED IN SPLICE ENCLOSURE.
- ETHERNET SWITCH TERMINATION CONFIGURATIONS ARE GENERIC, CONTRACTOR IS RESPONSIBLE FOR DETERMINING AND ENSURING PROPER TERMINATIONS.
- INCLUDE ON THE COVER OF EACH SPLICE TRAY THE FOLLOWING:
REFERENCE SECTION 1731 "FIBER OPTIC SPLICE ENCLOSURE"
1) SPLICE LOCATION
2) DATE
3) COMPANY NAME
4) NAME OF INDIVIDUAL PERFORMING THE SPLICING

PRIOR TO INSTALLING THE COVER ON THE SPLICE TRAY, TAKE A DIGITAL PHOTO SHOWING THE SPLICE TRAY INFORMATION SHOWN ABOVE (1-4) AND SUBMIT ALONG WITH OTDR TEST RESULTS.

LEGEND

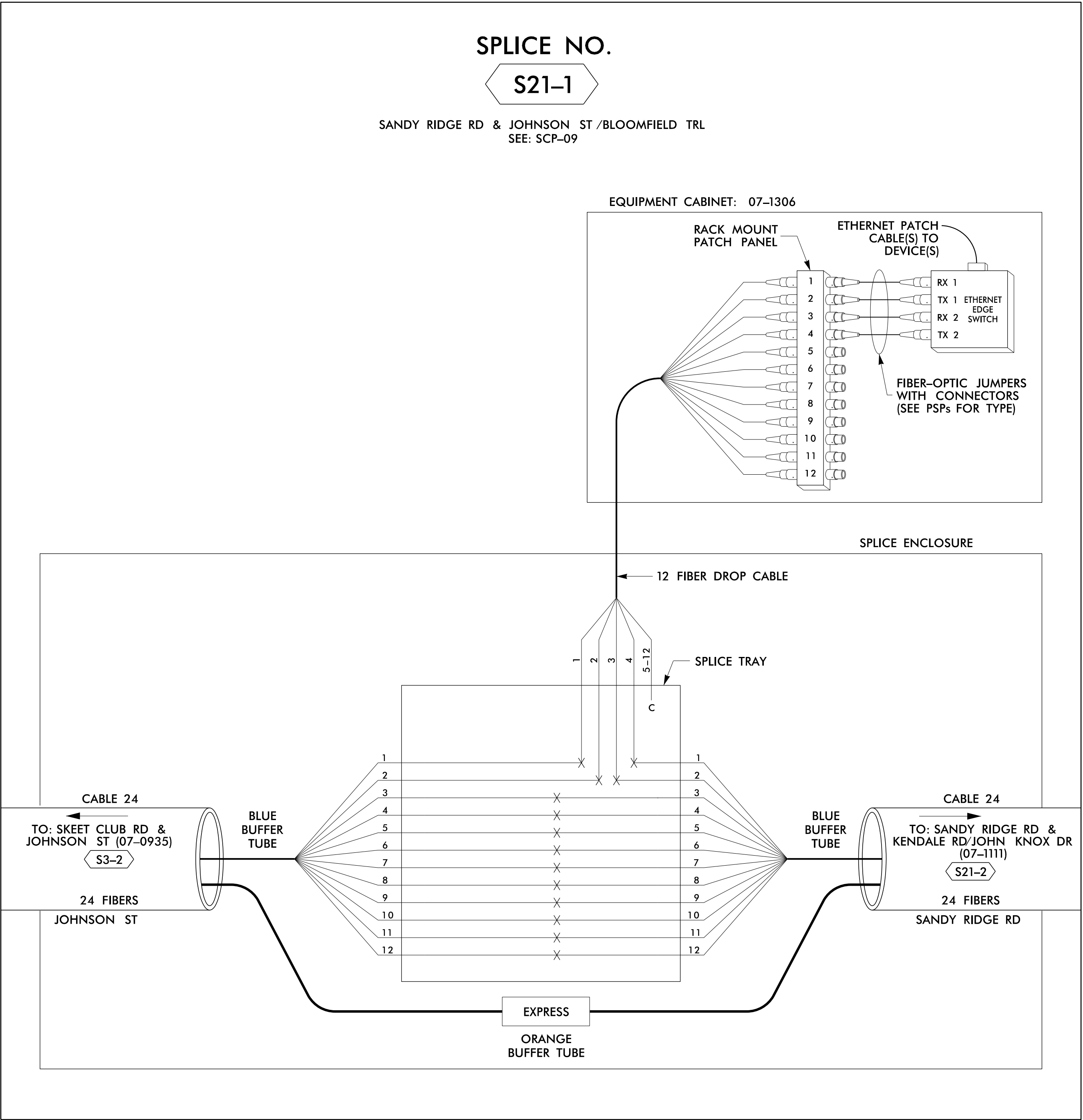
COLOR CODE		
TABIA 598-B		
(1) BLUE	(7) RED	EXPRESS
(2) ORANGE	(8) BLACK	
(3) GREEN	(9) YELLOW	BUFFER SPLICE
(4) BROWN	(10) VIOLET	
(5) SLATE	(11) ROSE	EXISTING
(6) WHITE	(12) AQUA	

X = FUSION SPLICE INDIVIDUAL FIBER
C = CAP AND SEAL

EXPRESS ENTIRE BUFFER TUBE /FIBERS THROUGH WITHOUT CUTTING

SPLICE ALL FIBERS IN BUFFER TUBE COLOR TO COLOR

EXISTING BUFFER TUBE /FIBERS. DO NOT MODIFY EXISTING SPLICES OR EXPRESSED FIBERS.



AtkinsRéal
1616 EAST MILLBROOK ROAD, SUITE 160
RALEIGH, NORTH CAROLINA 27609
(919) 876-6888 NCBEES #F-0326

TMP PHASE IV - Final Design

<p>Prepared for the Offices of:</p> <p>Department of Transportation and Safety NORTH CAROLINA Department of Transportation Systems Section</p> <p>750 Greenfield Parkway, Garner, NC 27529</p>	<p>High Point Signal System SR 1818 (Johnson Street)/ SR 1850 (Sandy Ridge Road) Cable Routing Plans Guilford County High Point</p> <p>Division 7</p> <p>PLAN DATE: February 2025 PREPARED BY: JT Stiff</p> <p>REVIEWED BY: AM Encarnacion REVIEWED BY: PL Alexander</p>	<p>SEAL NORTH CAROLINA PROFESSIONAL ENGINEER JAMES T. STIFF 056276</p> <p>Signed by: James Stiff 0548037872A434</p> <p>3/14/2025 DATE</p>
	<p>REVISIONS</p> <p>INIT.</p> <p>DATE</p>	<p>NTS</p>