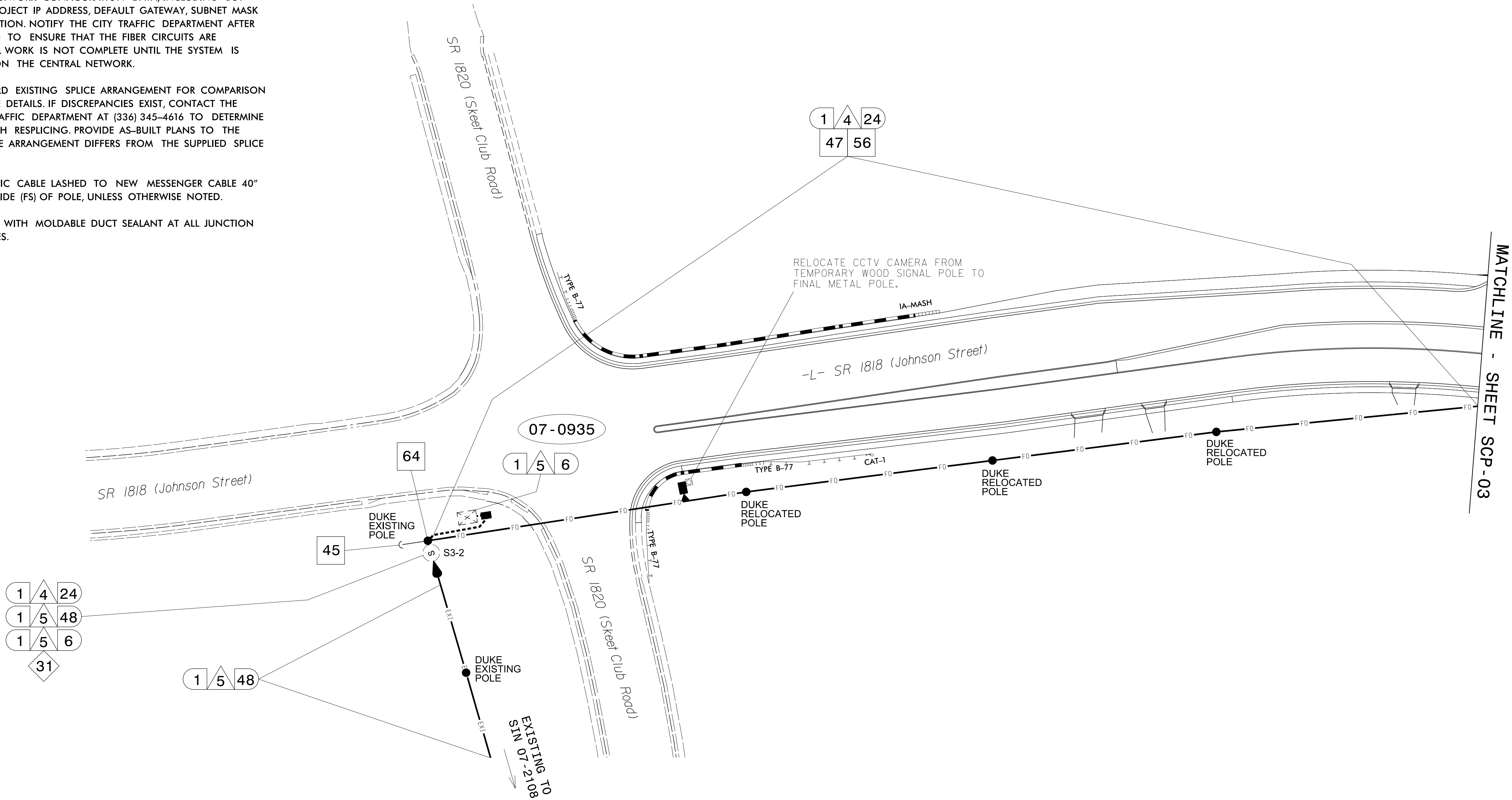


PROJECT REFERENCE NO.	SHEET NO.
U-4758	SCP-2A

NOTES:

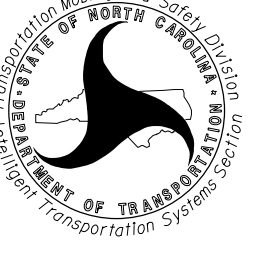
1. FIVE (5) DAYS PRIOR TO BEGINNING WORK AT SPLICE LOCATION S3-2 CONTACT CITY OF HIGH POINT TRAFFIC DEPARTMENT AT (336) 345-4616 TO ARRANGE FOR THE CITY TO PROGRAM THE FIELD ETHERNET SWITCHES WITH THE NECESSARY NETWORK CONFIGURATION DATA, INCLUDING BUT NOT LIMITED TO: THE PROJECT IP ADDRESS, DEFAULT GATEWAY, SUBNET MASK AND VLAN ID INFORMATION. NOTIFY THE CITY TRAFFIC DEPARTMENT AFTER ALL WORK IS PERFORMED TO ENSURE THAT THE FIBER CIRCUITS ARE FUNCTIONING PROPERLY. WORK IS NOT COMPLETE UNTIL THE SYSTEM IS UP AND OPERATIONAL ON THE CENTRAL NETWORK.
2. CONTRACTOR TO RECORD EXISTING SPLICE ARRANGEMENT FOR COMPARISON TO THE SUPPLIED SPLICE DETAILS. IF DISCREPANCIES EXIST, CONTACT THE CITY OF HIGH POINT TRAFFIC DEPARTMENT AT (336) 345-4616 TO DETERMINE HOW TO PROCEED WITH RESPLICING. PROVIDE AS-BUILT PLANS TO THE ENGINEER IF FINAL SPLICE ARRANGEMENT DIFFERS FROM THE SUPPLIED SPLICE DETAILS.
3. ATTACH NEW FIBER OPTIC CABLE LASHED TO NEW MESSENGER CABLE 40" BELOW POWER, FRONT SIDE (FS) OF POLE, UNLESS OTHERWISE NOTED.
4. SEAL ALL CONDUIT ENDS WITH MOLDABLE DUCT SEALANT AT ALL JUNCTION BOX / CABINET ENTRANCES.



1	INSTALL COAX CABLE	11	INSTALL RIGID, GALVANIZED STEEL RISER WITH WEATHERHEAD	22	INSTALL NEW CONDUIT INTO EXISTING CABINET BASE (USE EXISTING CONDUIT STUB-OUTS WHEN AVAILABLE)	32	INSTALL POLE MOUNTED SPLICE CABINET	42	INSTALL WOOD POLE	52B	INSTALL JUNCTION BOX MARKER	63	BOND RISER TO POLE GROUND
2	INSTALL ETHERNET CABLE	12	INSTALL RIGID, GALVANIZED STEEL RISER WITH FIBER OPTIC CABLE SEAL	23	INSTALL NEW RISER INTO EXISTING CABINET BASE (USE EXISTING CONDUIT STUB-OUTS WHEN AVAILABLE)	33	INSTALL BASE MOUNTED SPLICE CABINET	43	REMOVE EXISTING WOOD POLE	53A	STORE 20 FEET OF COMMUNICATIONS CABLE	64	BOND MESSENGER CABLE TO POLE GROUND
3	EXISTING ETHERNET (OR COAX) CABLE	13	INSTALL OUTER-DUCT POLYETHYLENE CONDUIT	24	INSTALL NEW CONDUIT INTO EXISTING POLE MOUNTED CABINET	34	INSTALL CABINET FOUNDATION	44	INSTALL AERIAL GUY ASSEMBLY	53B	STORE 50 FEET OF EACH COMMUNICATIONS CABLE	65	INSTALL HEAT SHRINK TUBING RETROFIT KIT
4	INSTALL SMFO CABLE	14	INSTALL POLYETHYLENE CONDUIT	25	INSTALL NEW RISER INTO EXISTING POLE MOUNTED CABINET	35	INSTALL CCTV CAMERA POLE MOUNTED CABINET	45	INSTALL STANDARD GUY ASSEMBLY	54	LASH CABLE(S) TO EXISTING COMMUNICATIONS CABLE	66	INSTALL MOLDABLE DUCT SEAL
5	EXISTING SMFO CABLE	15	DIRECTIONAL DRILL CONDUIT	26	INSTALL NEW ETHERNET EDGE SWITCH	36	INSTALL CCTV CAMERA ASSEMBLY	46	INSTALL SIDEWALK GUY ASSEMBLY	55	LASH CABLE(S) TO EXISTING MESSENGER CABLE	67	SLACK SPAN
6	INSTALL FIBER OPTIC DROP CABLE	16	BORE AND JACK CONDUIT	27	INSTALL NEW FIBER OPTIC TRANSCEIVER	37	INSTALL CCTV CAMERA WOOD POLE	47	INSTALL MESSENGER CABLE	56	LASH CABLE(S) TO NEW MESSENGER CABLE		
7	INSTALL TRACER WIRE	17	INSTALL CABLE(S) IN EXISTING CONDUIT	28	INSTALL INTERCONNECT CENTER, PATCH PANEL, JUMPERS, AND FUSION SPLICE CABLE IN CABINET	38	INSTALL CCTV CAMERA METAL POLE AND FOUNDATION	48A	REMOVE EXISTING COMMUNICATIONS AND MESSENGER CABLE	57	MODIFY EXISTING ELECTRICAL SERVICE		
8	TRENCH	18	INSTALL CABLE(S) IN NEW CONDUIT	29	INSTALL UNDERGROUND SPLICE ENCLOSURE	39	INSTALL JUNCTION BOX	48B	REMOVE EXISTING COMMUNICATIONS CABLE	58	INSTALL NEW ELECTRICAL SERVICE		
9	INSTALL PVC CONDUIT	19	INSTALL CABLE(S) IN EXISTING RISER	30	INSTALL AERIAL SPLICE ENCLOSURE	40A	INSTALL OVERSIZED JUNCTION BOX	49	BACK PULL EXISTING COMMUNICATIONS CABLE	59	INSTALL NEW EQUIPMENT CABINET DISCONNECT		
10	INSTALL RIGID, GALVANIZED STEEL CONDUIT	20	INSTALL CABLE(S) IN NEW RISER	31	MODIFY EXISTING INTERCONNECT CENTER /SPLICE ENCLOSURE	40B	INSTALL SPECIAL OVERSIZED JUNCTION BOX (36" x 24" x 24")	50	INSTALL CELL MODEM AND ANTENNA	60	BOND TRACER WIRE TO EQUIPMENT GROUND BUS		
		21	INSTALL CABLE(S) IN EXISTING CONDUIT STUB-OUTS			41	REMOVE EXISTING JUNCTION BOX	51	INSTALL CABLE STORAGE RACKS (SNOW SHOES) AND STORE 100 FEET OF CABLE	61	DO NOT BOND TRACER WIRE TO EQUIPMENT GROUND BUS		
								52A	INSTALL DELINEATOR MARKER	62	BOND RISER AND MESSENGER CABLE TO POLE GROUND		

TMP PHASE IV - Final Design

Prepared for the Offices of:



750 Greenfield Parkway, Garner, NC 27529

SCALE

NTS

High Point Signal System  
SR 1818 (Johnson Street)/  
SR 1850 (Sandy Ridge Road)  
Cable Routing Plans

Division 7      Guilford County      High Point

PLAN DATE: February 2025      REVIEWED BY: AM Encarnacion

PREPARED BY: JT Stiff      REVIEWED BY: PL Alexander

REVISIONS	INIT.	DATE

SEAL

NORTH CAROLINA  
PROFESSIONAL  
ENGINEER  
JAMES T. STIFF

Signed by: *James Stiff*  
05480007672404      3/14/2025

CADD Filename: U4758\_SCP-02A.dgn

**AtkinsRéalis**  
1616 EAST WILLBROOK ROAD, SUITE 160  
RALEIGH, NORTH CAROLINA 27609  
(919) 876-6888      NCBEES #F-0326

**DOCUMENT NOT CONSIDERED FINAL  
UNLESS ALL SIGNATURES COMPLETED**

28-FEB-2025 15:54  
C:\Users\jstiff\OneDrive\Documents\Roads and Bridges\Projects\100059632\_JSSR Sig and ITS\Task 11\_CL\U4758\_SCP-02A.dgn  
SYTIME: 1:03:33  
AT LUS01085