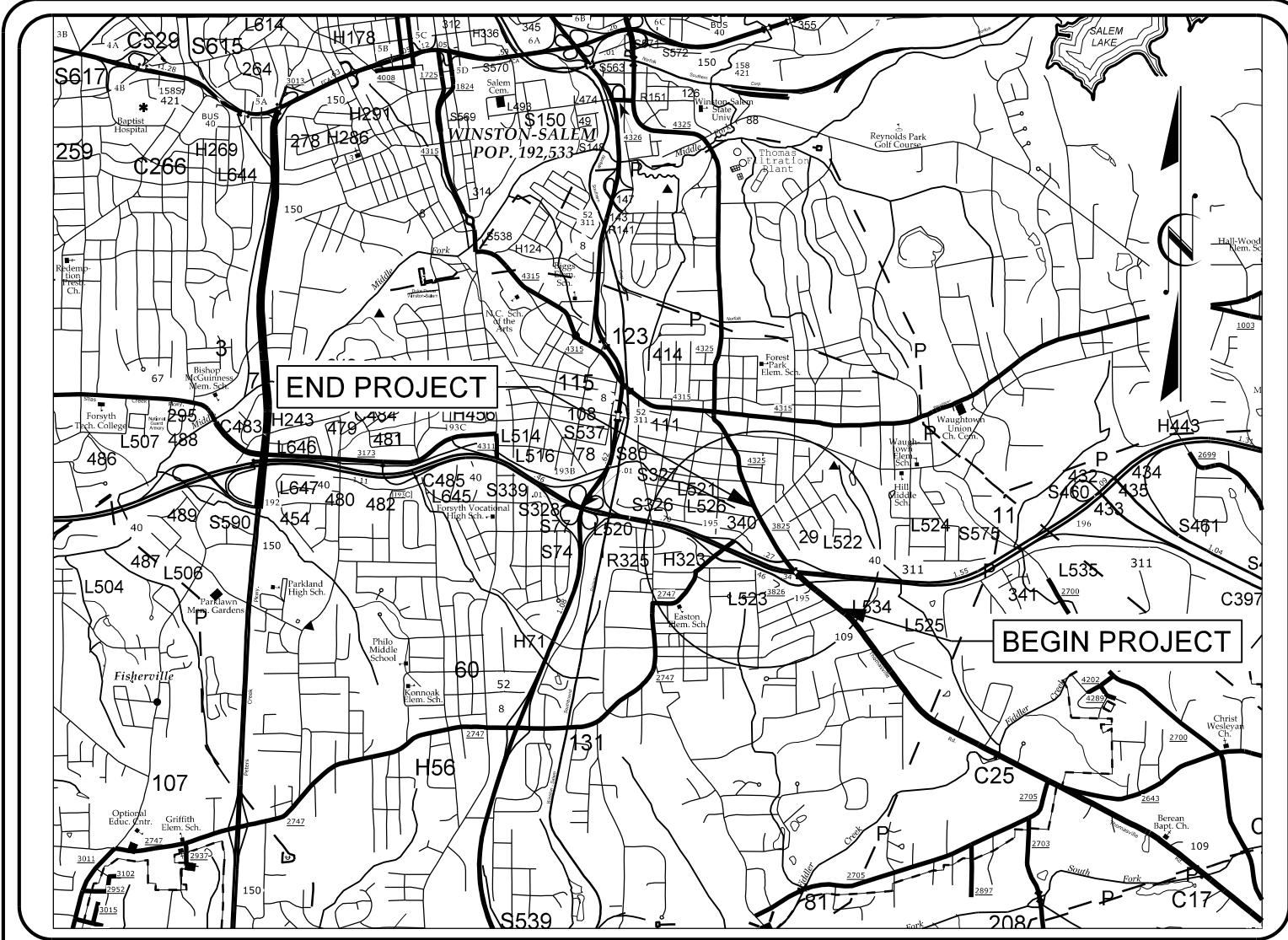


TIP PROJECT: I-5880



VICINITY MAP
NOT TO SCALE

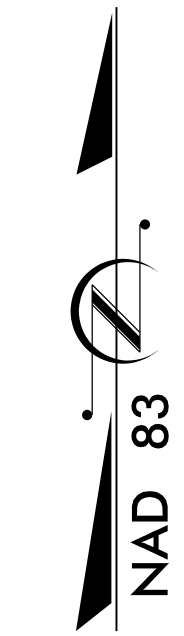
STATE OF NORTH CAROLINA
DIVISION OF HIGHWAYS
**PLAN FOR PROPOSED
HIGHWAY EROSION CONTROL**

FORSYTH COUNTY

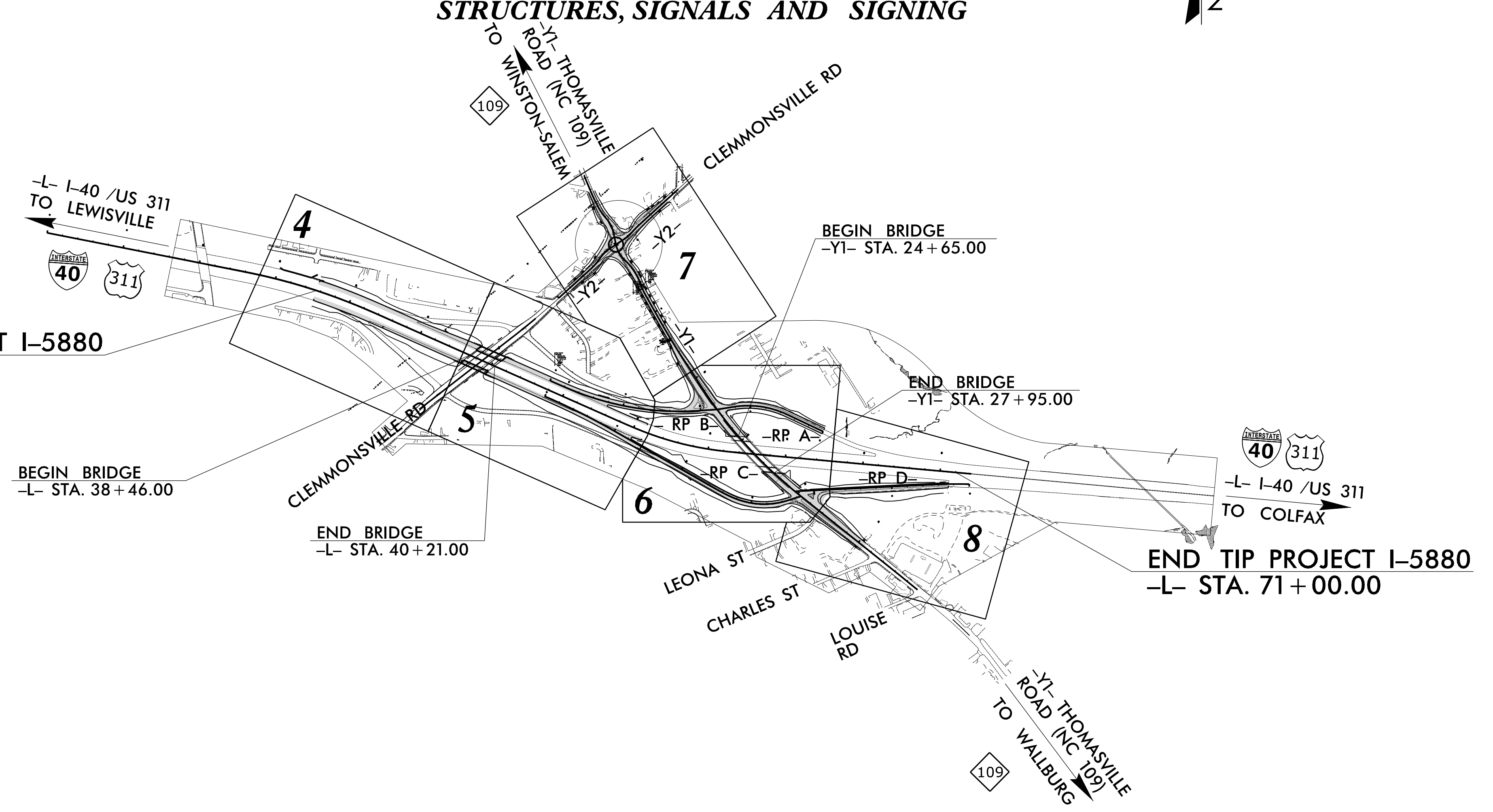
LOCATION: I-40 / NC 109 INTERCHANGE PROJECT
IN WINSTON-SALEM, NC

TYPE OF WORK: GRADING, DRAINAGE, PAVING,
STRUCTURES, SIGNALS AND SIGNING

STATE	STATE PROJECT REFERENCE NO.	SHEET NO.	TOTAL SHEETS
N.C.	I-5880	EC-1	
STATE PROJ. NO.	F.A. PROJ. NO.	DESCRIPTION	



THIS PROJECT CONTAINS
EROSION CONTROL PLANS
FOR CLEARING AND
GRUBBING PHASE OF
CONSTRUCTION.



BEGIN TIP PROJECT I-5880
-L- STA. 27 + 75.00

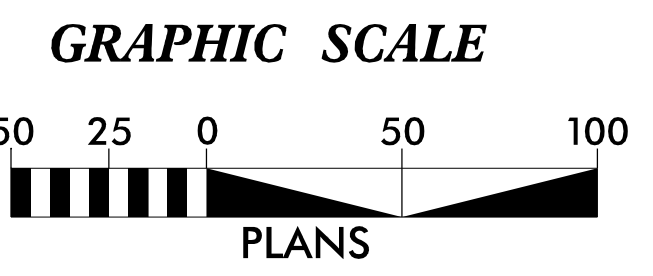
BEGIN BRIDGE
-L- STA. 38 + 46.00

END BRIDGE
-L- STA. 40 + 21.00

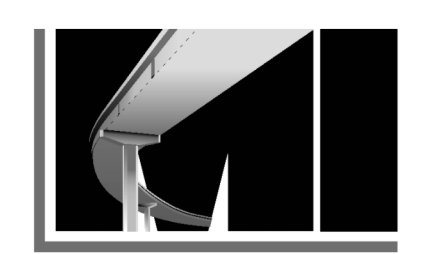
BEGIN BRIDGE
-Y1- STA. 24 + 65.00

END BRIDGE
-Y1- STA. 27 + 95.00

END TIP PROJECT I-5880
-L- STA. 71 + 00.00



THESE EROSION AND SEDIMENT CONTROL PLANS COMPLY
WITH THE REGULATIONS SET FORTH BY THE NCG 010000 GENERAL
STORMWATER CONSTRUCTION PERMIT ISSUED BY THE NORTH
CAROLINA DEPARTMENT OF ENVIRONMENTAL QUALITY DIVISION
OF ENERGY, MINERAL, AND LAND RESOURCES.



LEVEL III CERTIFIED BY:
KAREN HEFNER, PE
CERTIFICATION NUMBER: 3824
ISSUED: JANUARY 6, 2025

Prepared in the Office of:
MI ENGINEERING, PLLC
1011 SCHAUB DR, SUITE 100
RALEIGH, NC 27606
FIRM PE NUMBER: P-0671

Designed by:
KAREN HEFNER, PE 3824
NAME LEVEL III CERTIFICATION NO.

Roadway Standard Drawings
The "Roadway Standard Drawings"- Roadway Design Unit - N. C.
Department of Transportation - Raleigh, N. C., dated January 2024
and the latest revision thereto are applicable to this project and by
reference hereby are considered a part of these plans.

1/5/2025 1:58:00 PM C:\Users\khefner\OneDrive\Documents\Projects\I-5880\Winston-Salem\Erosion Control\CADD\PS\N5880.DRN EC - 1.dgn

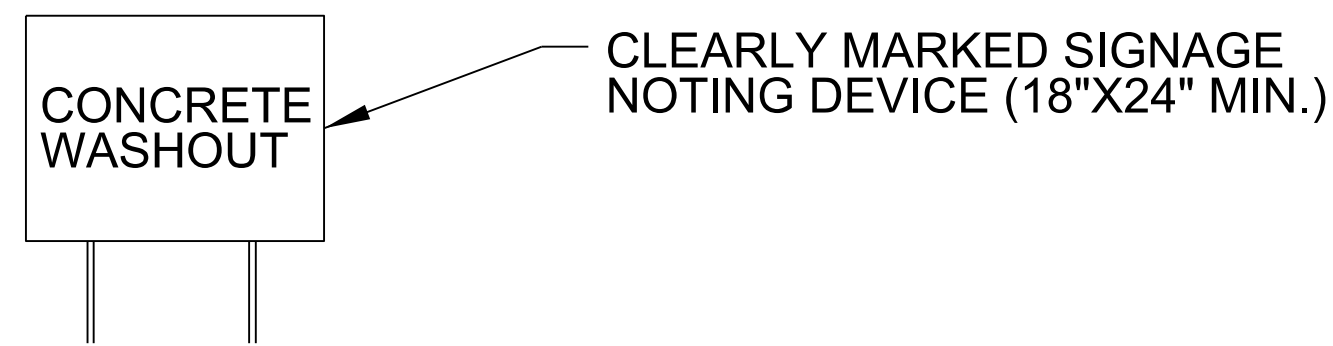
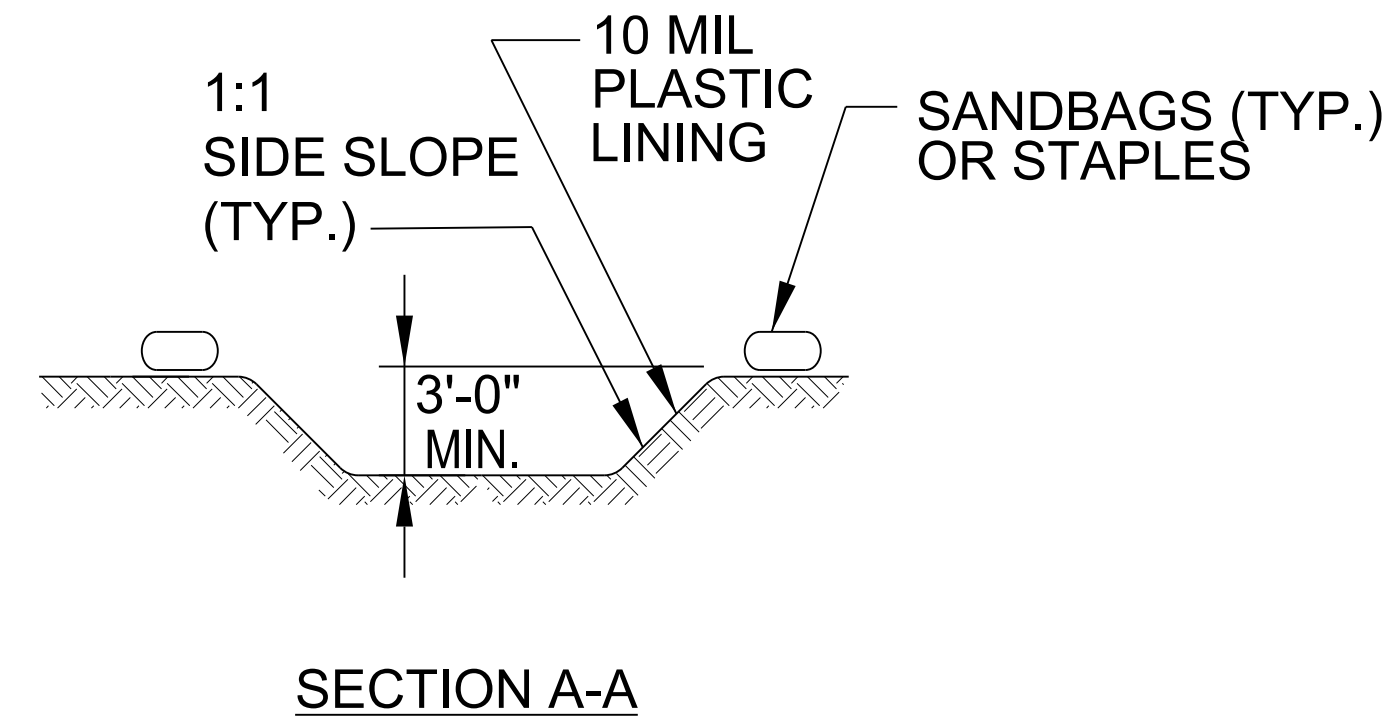
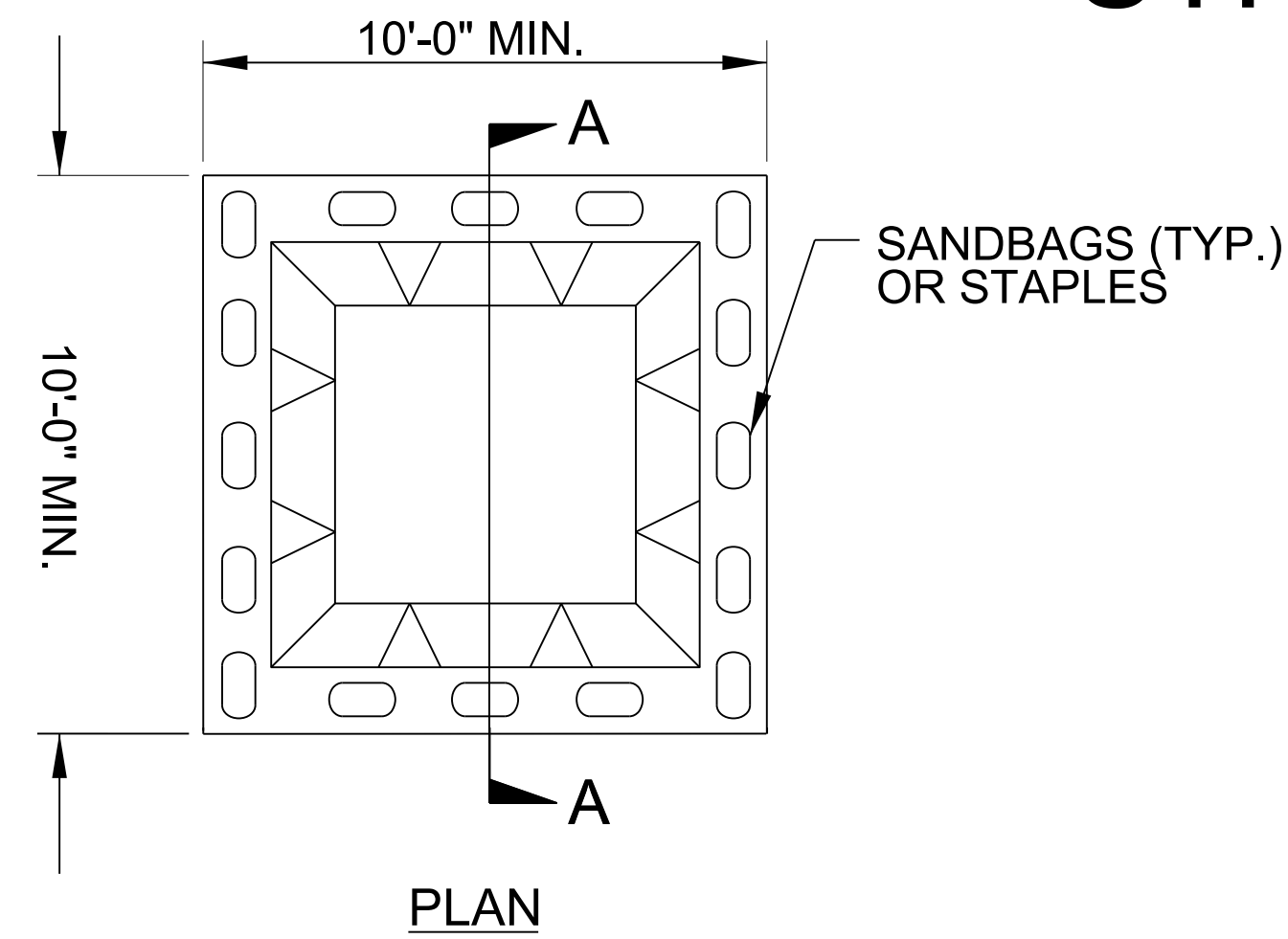
DIVISION OF HIGHWAYS STATE OF NORTH CAROLINA

EROSION & SEDIMENT CONTROL LEGEND

Std. #	Description	Symbol	Std. #	Description	Symbol
1605.01	Temporary Silt Fence		1633.01	Temporary Rock Silt Check Type A	
1606.01	Special Sediment Control Fence		1633.02	Temporary Rock Silt Check Type B	
1622.01	Temporary Berms and Slope Drains		1633.03	Temporary Rock Silt Check Type A with Excelsior Matting and Flocculant	
1630.02	Silt Basin Type B		1634.01	Temporary Rock Sediment Dam Type A	
1630.03	Temporary Silt Ditch		1634.02	Temporary Rock Sediment Dam Type B	
1630.04	Stilling Basin		1635.01	Rock Pipe Inlet Sediment Trap Type A	
1630.05	Temporary Diversion		1635.02	Rock Pipe Inlet Sediment Trap Type B	
1630.06	Special Stilling Basin		1636.01	Excelsior Wattle Check	
1630.07	Skimmer Basin		1636.01	Excelsior Wattle Check with Flocculant	
1630.08	Tiered Skimmer Basin		1636.01	Coir Fiber Wattle Check	
1630.09	Earthen Dam with Skimmer		1636.01	Coir Fiber Wattle Check with Flocculant	
	Infiltration Basin		1636.02	Silt Fence Excelsior Wattle Break	
	Rock Inlet Sediment Trap:			Silt Fence Coir Fiber Wattle Break	
1632.01	Type A		1636.03	Excelsior Wattle Barrier	
1632.02	Type B		1636.03	Coir Fiber Wattle Barrier	
1632.03	Type C				

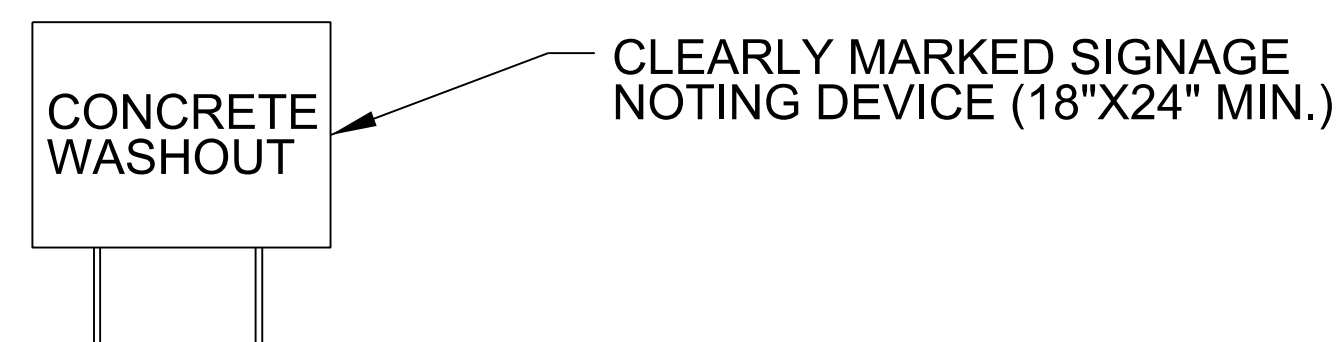
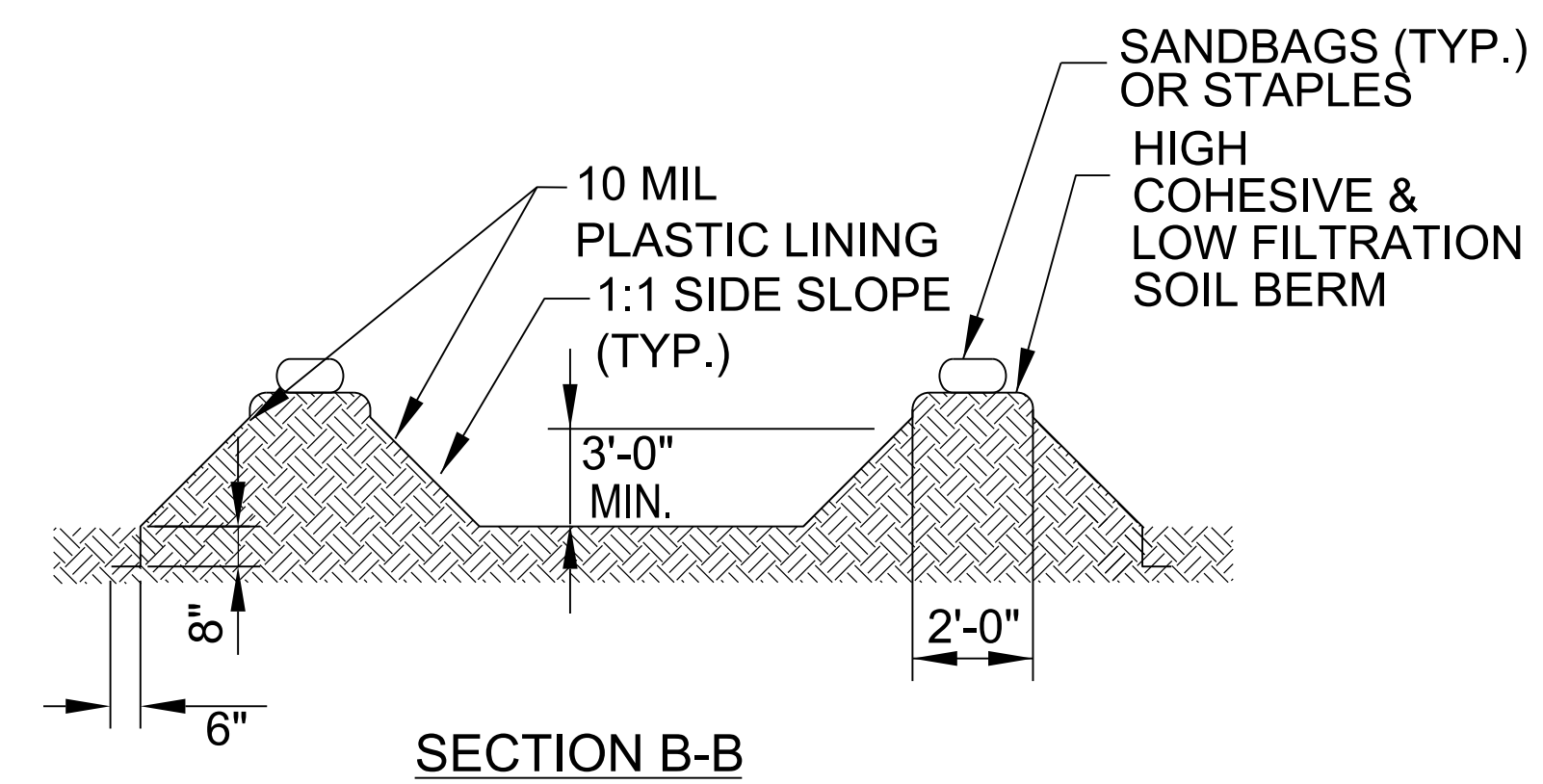
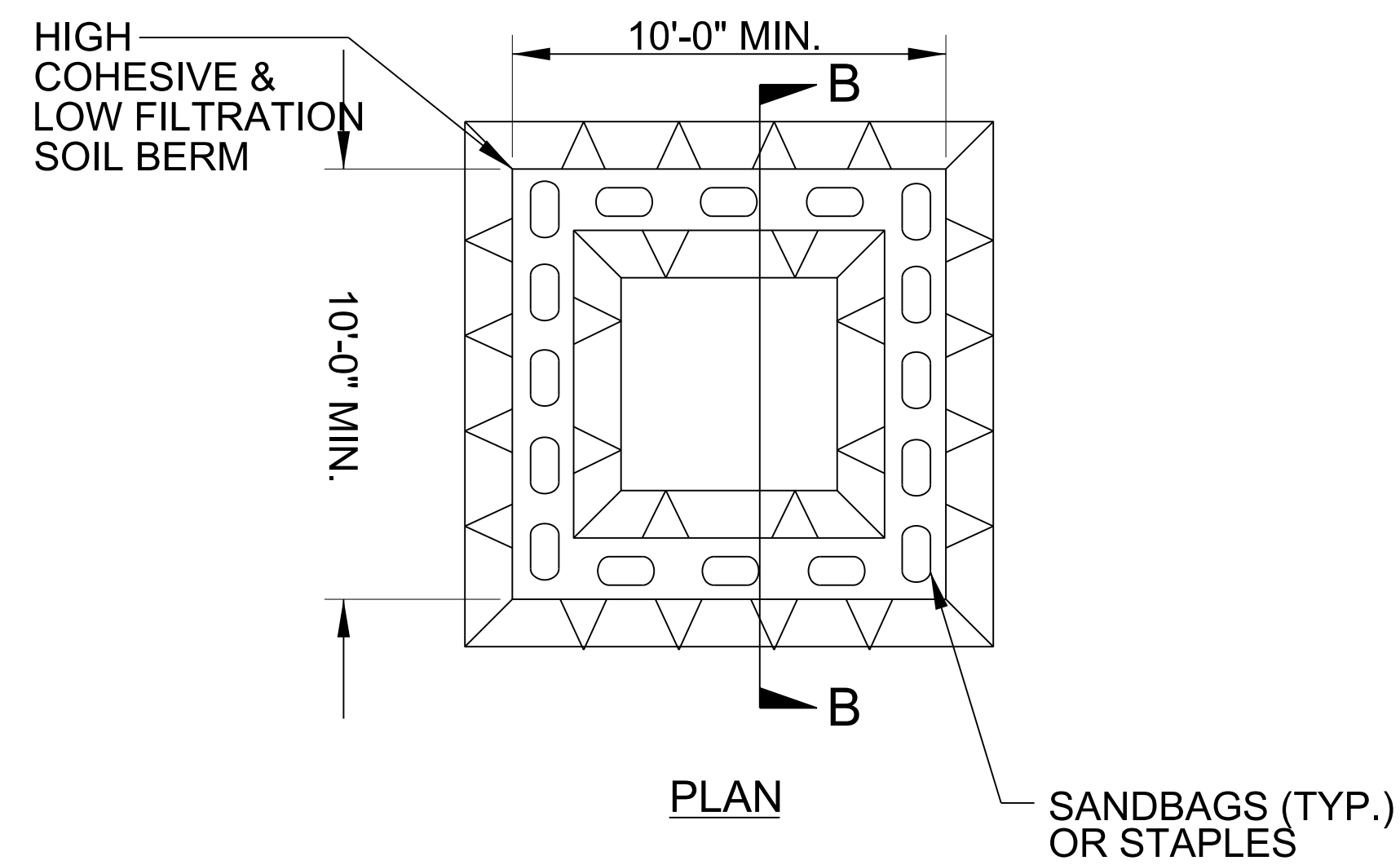
I:\2025\Projects\I-5880\Winston-Salem\Erosion Control\CADD\PS\I-5880.DRN_EC.tbl.dgn
 28/05/2025 10:00:00 AM
 USER:NAME13

ONSITE CONCRETE WASHOUT STRUCTURE WITH LINER



BELOW GRADE WASHOUT STRUCTURE
NOT TO SCALE

- NOTES:**
1. ACTUAL LOCATION DETERMINED IN FIELD
 2. THE CONCRETE WASHOUT STRUCTURES SHALL BE MAINTAINED WHEN THE LIQUID AND/OR SOLID REACHES 75% OF THE STRUCTURES CAPACITY TO PROVIDE ADEQUATE HOLDING CAPACITY WITH A MINIMUM 12 INCHES OF FREEBOARD.
 3. CONCRETE WASHOUT STRUCTURE NEEDS TO BE CLEARLY MARKED WITH SIGNAGE NOTING DEVICE.



ABOVE GRADE WASHOUT STRUCTURE
NOT TO SCALE

- NOTES:**
1. ACTUAL LOCATION DETERMINED IN FIELD
 2. THE CONCRETE WASHOUT STRUCTURES SHALL BE MAINTAINED WHEN THE LIQUID AND/OR SOLID REACHES 75% OF THE STRUCTURES CAPACITY TO PROVIDE ADEQUATE HOLDING CAPACITY WITH A MINIMUM 12 INCHES OF FREEBOARD.
 3. CONCRETE WASHOUT STRUCTURE NEEDS TO BE CLEARLY MARKED WITH SIGNAGE NOTING DEVICE.

DIVISION OF HIGHWAYS
STATE OF NORTH CAROLINA

SOIL STABILIZATION TIMEFRAMES

<i>SITE DESCRIPTION</i>	<i>STABILIZATION TIME</i>	<i>TIMEFRAME EXCEPTIONS</i>
PERIMETER DIKES, SWALES, DITCHES AND SLOPES	7 DAYS	NONE
HIGH QUALITY WATER (HQW) ZONES	7 DAYS	NONE
SLOPES STEEPER THAN 3:1	7 DAYS	IF SLOPES ARE 10' OR LESS IN LENGTH AND ARE NOT STEEPER THAN 2:1, 14 DAYS ARE ALLOWED.
SLOPES 3:1 TO 4:1	14 DAYS	7 DAYS FOR SLOPES GREATER THAN 50' IN LENGTH WITH SLOPES STEEPER THAN 4:1. 7 DAYS FOR PERIMETER DIKES, SWALES, DITCHES PERIMETER SLOPES, AND HQW ZONES
ALL OTHER AREAS WITH SLOPES FLATTER THAN 4:1	14 DAYS	7 DAYS FOR PERIMETER DIKES, SWALES, DITCHES PERIMETER SLOPES, AND HQW ZONES

DIVISION OF HIGHWAYS STATE OF NORTH CAROLINA

SOIL STABILIZATION SUMMARY SHEET

SLOPE MATTING FOR EROSION CONTROL

CONST SHEET NO.	LINE	FROM STATION	TO STATION	SIDE	ESTIMATE (SY)
4	-L-	36+00	38+00	LT	929
4	-L-	33+00	38+00	RT	2,897
5	-L-	40+50	48+00	LT	3,846
5	-L-	40+50	50+50	RT	7,741
6	-RPC-	17+00	19+50	RT	1,464
6	-RPC-	23+50	24+50	RT	337
6	-YI-	28+00	29+00	LT	522
6	-YI-	23+50	24+50	RT	542
8	-RPD-	11+50	16+00	LT	2,392
SLOPE MATTING SUBTOTAL					20,670

DITCH MATTING FOR EROSION CONTROL

CONST SHEET NO.	LINE	FROM STATION	TO STATION	SIDE	ESTIMATE (SY)
STRAW MATTING					
4, 5	-L-	38+25	43+50	RT	420
5, 6	-L-	48+00	53+00	RT	1,170
DITCH MATTING - STRAW SUBTOTAL					1,590
EXCELSIOR MATTING					
6	-RPA-	8+00	16+25	LT	290
6	-RPA-	13+50	16+00	RT	960
DITCH MATTING - EXCELSIOR SUBTOTAL					1,250
DITCH MATTING *STRAW & EXCELSIOR* SUBTOTAL					2,840
DITCH MATTING SUBTOTAL					2,840
SLOPE MATTING SUBTOTAL					20,670
MATTING SUBTOTAL					23,510
MISCELLANEOUS MATTING TO BE INSTALLED AS DIRECTED BY THE ENGINEER					11,770
TOTAL					35,280
SAY					35,500

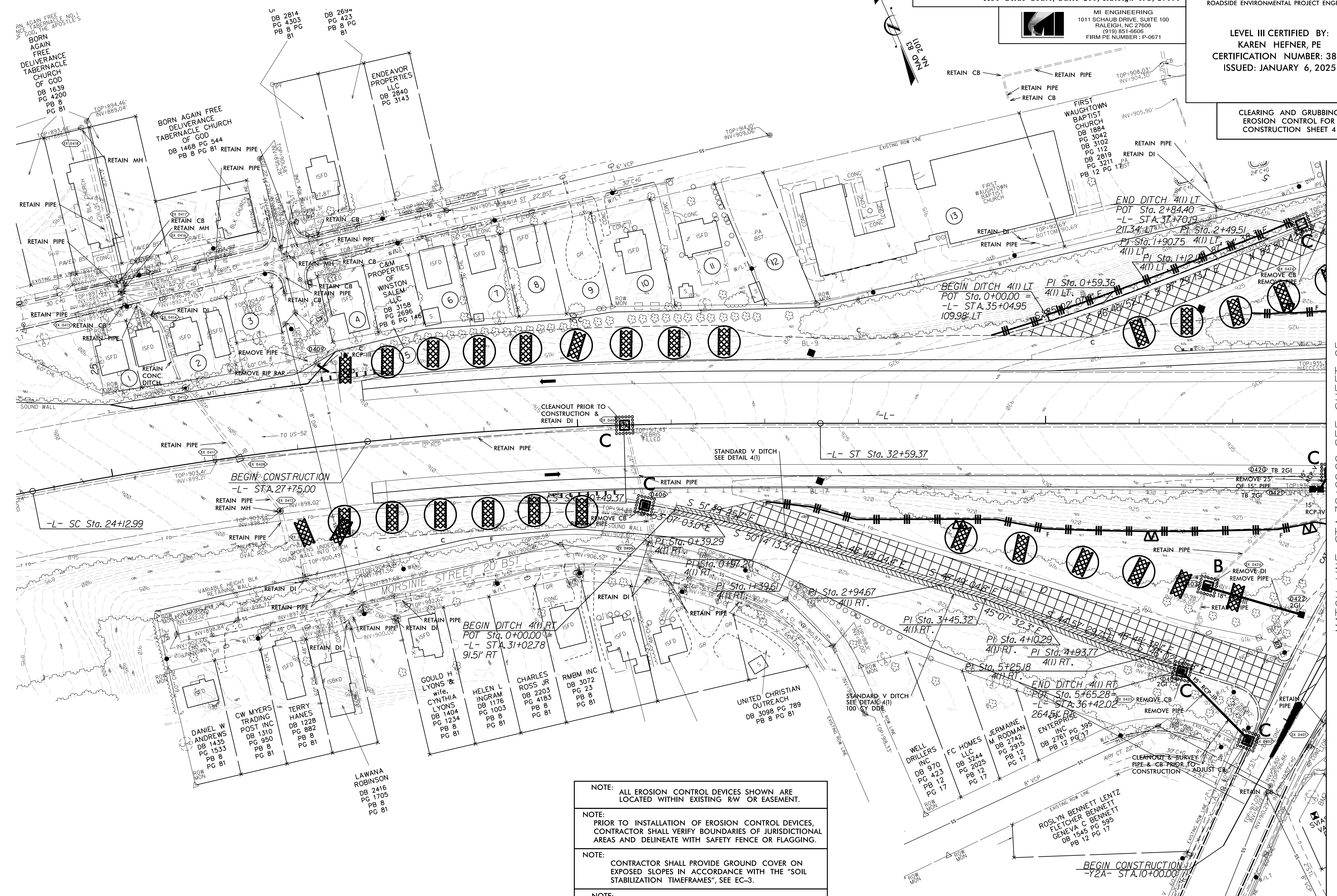
8/17/99
1/6/2025
I:\62025
N:\62025\Projects\1-5880-Winston-Salem\Ernsion\Contr\1\CADD\PSHV15880.DRN.EC.04.psh_04.dgn
8/17/99

JMT. Prepared in the Office of:
JOHNSON, MIRMIRAN, & THOMPSON, INC.
1130 Situs Court, Suite 200, Raleigh NC, 27606

MI ENGINEERING
1011 SCHAUB DRIVE, SUITE 100
RALEIGH, NC 27606
(919) 851-6606
FIRM PE NUMBER: P-0671

PROJECT REFERENCE NO.	SHEET NO.
1-5880	EC-4/CONST.4
RW SHEET NO.	
ROADSIDE ENVIRONMENTAL PROJECT ENGINEER	
LEVEL III CERTIFIED BY: KAREN HEFNER, PE CERTIFICATION NUMBER: 3824 ISSUED: JANUARY 6, 2025	

CLEARING AND GRUBBING
EROSION CONTROL FOR
CONSTRUCTION SHEET 4



- NOTE: ALL EROSION CONTROL DEVICES SHOWN ARE LOCATED WITHIN EXISTING RW OR EASEMENT.
- NOTE: PRIOR TO INSTALLATION OF EROSION CONTROL DEVICES, CONTRACTOR SHALL VERIFY BOUNDARIES OF JURISDICTIONAL AREAS AND DELINEATE WITH SAFETY FENCE OR FLAGGING.
- NOTE: CONTRACTOR SHALL PROVIDE GROUND COVER ON EXPOSED SLOPES IN ACCORDANCE WITH THE "SOIL STABILIZATION TIMEFRAMES", SEE EC-3.
- NOTE: PLACE TEMPORARY ROCK SEDIMENT DAMS TYPE - B AND TEMPORARY ROCK SILT CHECKS TYPE - A AT DRAINAGE OUTLETS.

SEE SHEET 9 FOR -L- PROFILES

MATCH LINE STA. 38+00.00 SEE SHEET 05

8/17/99
I:\62005
N:\CADD\1-5880-Winston-Salem\Erosion Control\CADD\PSH\5880_DRN_EC_05.psh_05.dgn
JUSERNAME

JMT. Prepared in the Office of:
JOHNSON, MIRMAN, & THOMPSON, INC.
1130 Situs Court, Suite 200, Raleigh NC, 27606

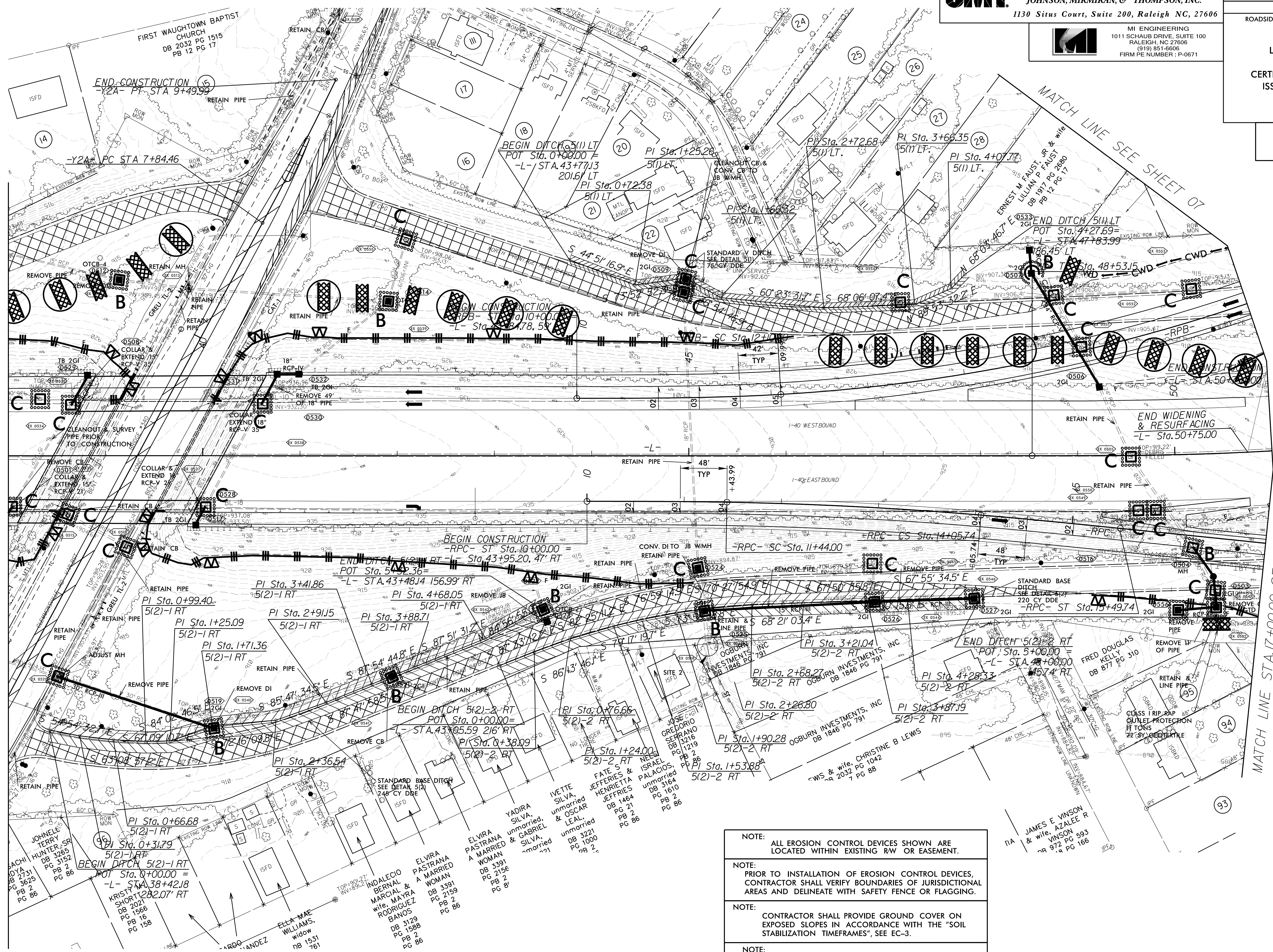
MI ENGINEERING
1011 SCHAUB DRIVE, SUITE 100
RALEIGH, NC 27606
(919) 851-6606
FIRM PE NUMBER: P-0671

PROJECT REFERENCE NO.	SHEET NO.
1-5880	EC-5/CONST.5
RW SHEET NO.	
ROADSIDE ENVIRONMENTAL PROJECT ENGINEER	
LEVEL III CERTIFIED BY: KAREN HEFNER, PE CERTIFICATION NUMBER: 3824 ISSUED: JANUARY 6, 2025	

CLEARING AND GRUBBING
EROSION CONTROL FOR
CONSTRUCTION SHEET 5

MATCH LINE STA. 38+00.00 SEE SHEET 04

MATCH LINE STA. 17+00.00 SEE SHEET 06



- NOTE:** ALL EROSION CONTROL DEVICES SHOWN ARE LOCATED WITHIN EXISTING RW OR EASEMENT.
- NOTE:** PRIOR TO INSTALLATION OF EROSION CONTROL DEVICES, CONTRACTOR SHALL VERIFY BOUNDARIES OF JURISDICTIONAL AREAS AND DELINEATE WITH SAFETY FENCE OR FLAGGING.
- NOTE:** CONTRACTOR SHALL PROVIDE GROUND COVER ON EXPOSED SLOPES IN ACCORDANCE WITH THE "SOIL STABILIZATION TIMEFRAMES", SEE EC-3.
- NOTE:** PLACE TEMPORARY ROCK SEDIMENT DAMS TYPE - B AND TEMPORARY ROCK SILT CHECKS TYPE - A AT DRAINAGE OUTLETS.

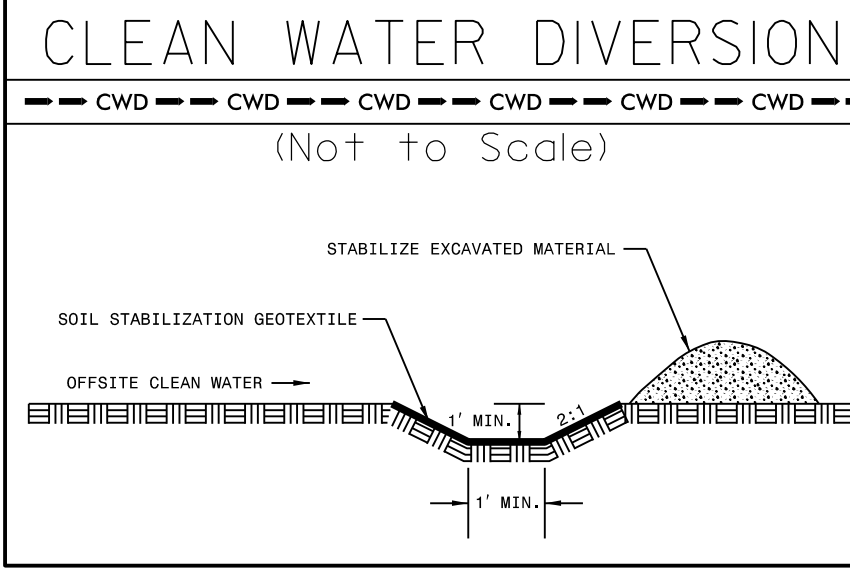
SEE SHEET 10 FOR -L- PROFILES
SEE SHEET 15 FOR -RPC- PROFILE
SEE SHEET 16 FOR -RPD- PROFILE



PROJECT REFERENCE NO.	SHEET NO.
1-5880	EC-6/CONST.6
RW SHEET NO.	
ROADSIDE ENVIRONMENTAL PROJECT ENGINEER	

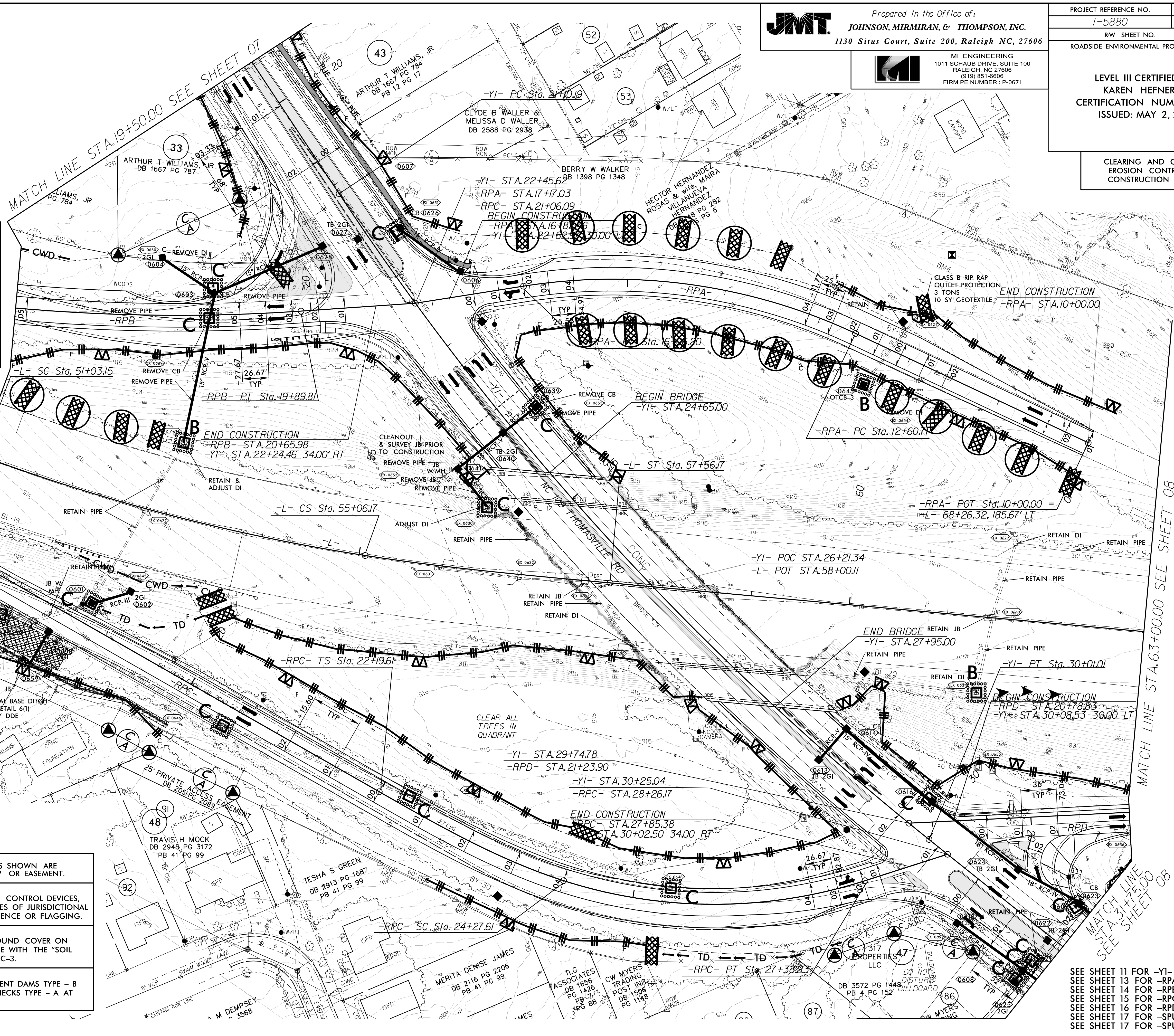
LEVEL III CERTIFIED BY:
KAREN HEFNER, PE
CERTIFICATION NUMBER: 3824
ISSUED: MAY 2, 2025

CLEARING AND GRUBBING
EROSION CONTROL FOR
CONSTRUCTION SHEET 6



- NOTE:** ALL EROSION CONTROL DEVICES SHOWN ARE LOCATED WITHIN EXISTING R/W OR EASEMENT.
- NOTE:** PRIOR TO INSTALLATION OF EROSION CONTROL DEVICES, CONTRACTOR SHALL VERIFY BOUNDARIES OF JURISDICTIONAL AREAS AND DELINEATE WITH SAFETY FENCE OR FLAGGING.
- NOTE:** CONTRACTOR SHALL PROVIDE GROUND COVER ON EXPOSED SLOPES IN ACCORDANCE WITH THE "SOIL STABILIZATION TIMEFRAMES", SEE EC-3.
- NOTE:** PLACE TEMPORARY ROCK SEDIMENT DAMS TYPE - B AND TEMPORARY ROCK SILT CHECKS TYPE - A AT DRAINAGE OUTLETS.

8/17/99
NAD 83
NA 2011
5/2/2025
RA\VC_CADD\M9003_1-5880_Winston-Salem\rosion Control\CADD\PSH\5880_DRN_EC_06_psh_06.dgn
MI ENGINEERING, RALEIGH NC



SEE SHEET 11 FOR -YI- PROFILE
SEE SHEET 13 FOR -RPA- PROFILE
SEE SHEET 14 FOR -RPB- PROFILE
SEE SHEET 15 FOR -RPC- PROFILE
SEE SHEET 16 FOR -RPD- PROFILE
SEE SHEET 17 FOR -RPI- PROFILE
SEE SHEET 17 FOR -RPS- PROFILE

8/17/99
 I:\E\2005
 N:\CADD\1-5880-Winston-Salem\Erision Control\CADD\PSH\5880_DRN_EC_07_psh_07.dgn
 &USERAME2

JMT Prepared in the Office of:
JOHNSON, MIRMIRAN, & THOMPSON, INC.
 1130 Situs Court, Suite 200, Raleigh NC, 27606

MI ENGINEERING
 1011 SCHAUB DRIVE, SUITE 100
 RALEIGH, NC 27606
 (919) 851-6606
 FIRM FE NUMBER: P-0671

PROJECT REFERENCE NO.	SHEET NO.
1-5880	EC-7/CONST.7
RW SHEET NO.	
ROADSIDE ENVIRONMENTAL PROJECT ENGINEER	
LEVEL III CERTIFIED BY: KAREN HEFNER, PE CERTIFICATION NUMBER: 3824 ISSUED: JANUARY 6, 2025	

CLEARING AND GRUBBING
 EROSION CONTROL FOR
 CONSTRUCTION SHEET 7

CONSTRUCTION
 TA.5+00.00

PRC Sta. 16+34.54
 PC Sta. 15+74.61
 1- STA.9+95.12
 2- STA.15+05.83
 -Y1- PC Sta. 9+90.99
 '1- PT Sta. 9+17.59
 PRC Sta. 8+13.16
 PC Sta. 7+09.53
 PT Sta. 6+89.93

-Y1- PC Sta. 6+20.38
 POT Sta. 5+16.21

-CI- STA.2+20.42
 -Y1- STA.9+48.14
 -CI- STA.3+11.94
 -Y2- STA.14+58.78
 PRC Sta. 13+75.41

IRFAN K JANJUA &
 SHAHID CHAUDHARY
 DB 3236 PG 614
 PB 1 PG 50

ESTEBAN BERNAL SILVA
 DB 3132 PG 1739
 PB 1 PG 50

BEGIN CONSTRUCTION
 -Y2- STA.10+67.87

-Y2- PT Sta. 18+47.65

-Y2- PC Sta. 17+64.38

-Y2- PT Sta. 16+89.02

-CI- STA.1+64.28
 -Y2- STA.15+52.78
 -CI- PC Sta. 1+00.00=
 -CI- PC Sta. 3+95.31

-Y1- PT Sta. 13+69.58

-Y1- PC Sta. 15+58.21

-Y1- PT Sta. 19+07.92

-Y1- PRC Sta. 11+12.30

-CI- STA.3+74.63
 -Y1- STA.10+42.24

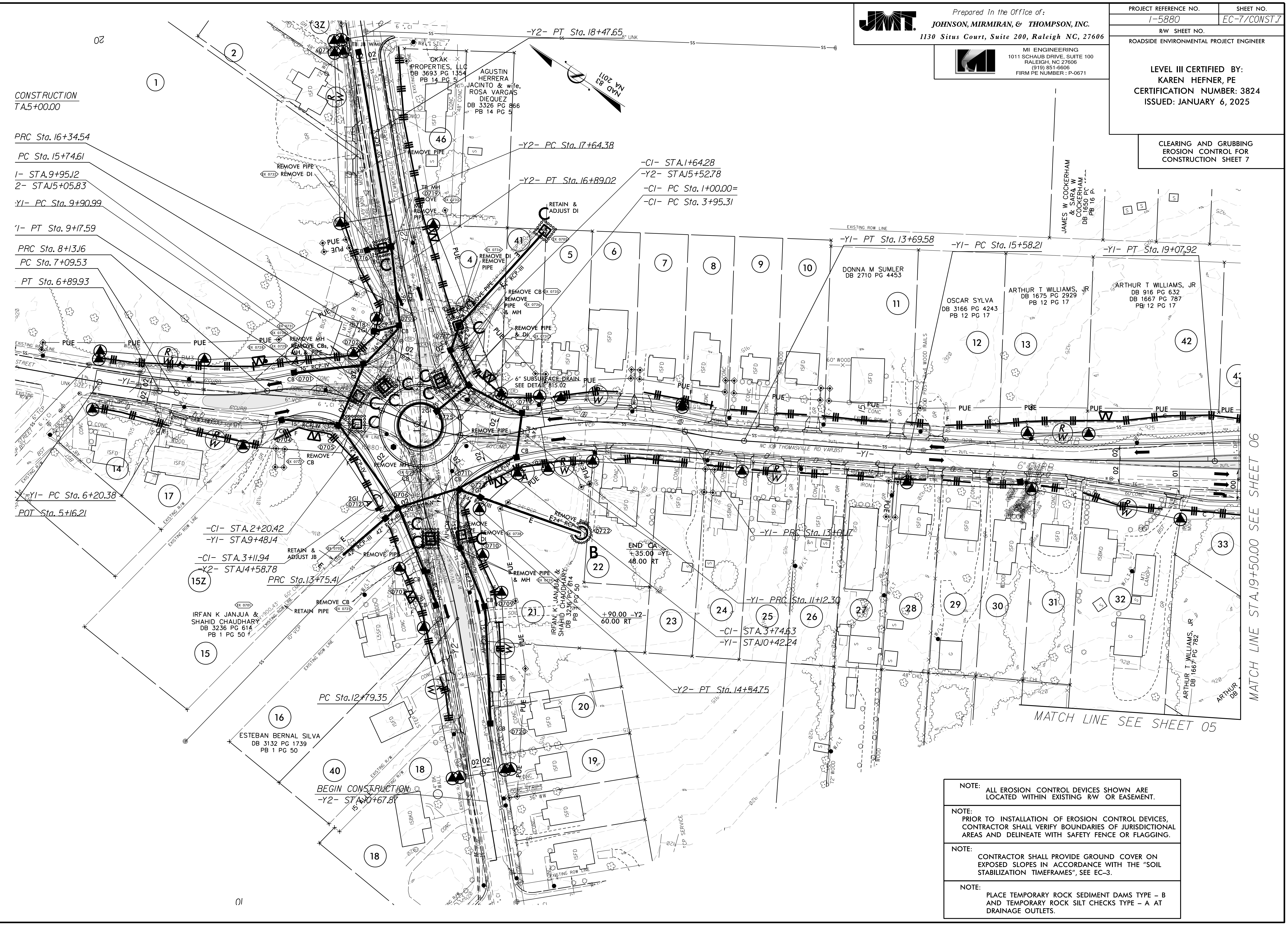
-Y2- PT Sta. 14+54.75

PC Sta. 12+79.35

MATCH LINE SEE SHEET 05

MATCH LINE STA.19+50.00 SEE SHEET 06

- NOTE: ALL EROSION CONTROL DEVICES SHOWN ARE LOCATED WITHIN EXISTING R/W OR EASEMENT.
- NOTE: PRIOR TO INSTALLATION OF EROSION CONTROL DEVICES, CONTRACTOR SHALL VERIFY BOUNDARIES OF JURISDICTIONAL AREAS AND DELINEATE WITH SAFETY FENCE OR FLAGGING.
- NOTE: CONTRACTOR SHALL PROVIDE GROUND COVER ON EXPOSED SLOPES IN ACCORDANCE WITH THE "SOIL STABILIZATION TIMEFRAMES", SEE EC-3.
- NOTE: PLACE TEMPORARY ROCK SEDIMENT DAMS TYPE - B AND TEMPORARY ROCK SILT CHECKS TYPE - A AT DRAINAGE OUTLETS.



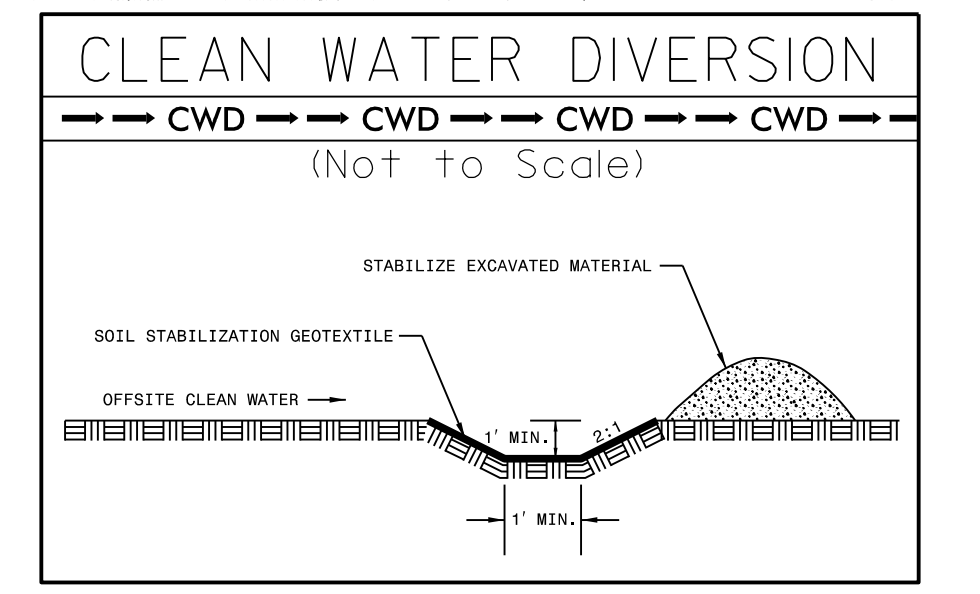
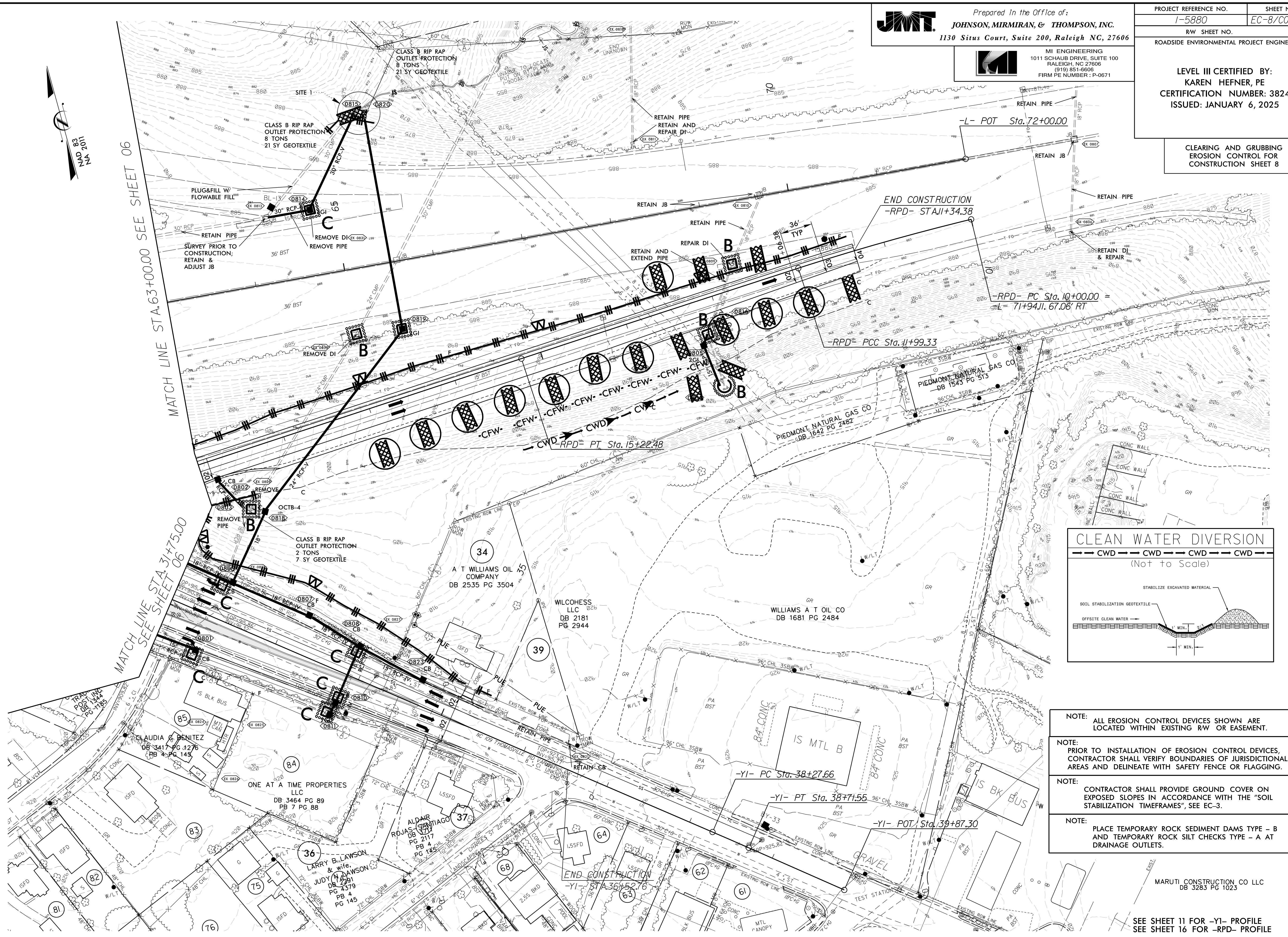
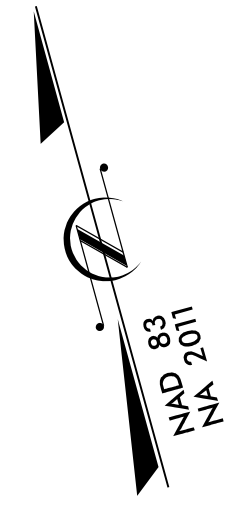
8/17/99

JMT. Prepared in the Office of:
JOHNSON, MIRIRAN, & THOMPSON, INC.
1130 Situs Court, Suite 200, Raleigh NC, 27606

MI ENGINEERING
1011 SCHUBB DRIVE, SUITE 100
RALEIGH, NC 27606
(919) 851-6606
FIRM PE NUMBER: P-0671

PROJECT REFERENCE NO.	SHEET NO.
1-5880	EC-8/CONST.8
RW SHEET NO.	
ROADSIDE ENVIRONMENTAL PROJECT ENGINEER	
LEVEL III CERTIFIED BY: KAREN HEFNER, PE CERTIFICATION NUMBER: 3824 ISSUED: JANUARY 6, 2025	

CLEARING AND GRUBBING
EROSION CONTROL FOR
CONSTRUCTION SHEET 8



- NOTE: ALL EROSION CONTROL DEVICES SHOWN ARE LOCATED WITHIN EXISTING RW OR EASEMENT.
- NOTE: PRIOR TO INSTALLATION OF EROSION CONTROL DEVICES, CONTRACTOR SHALL VERIFY BOUNDARIES OF JURISDICTIONAL AREAS AND DELINEATE WITH SAFETY FENCE OR FLAGGING.
- NOTE: CONTRACTOR SHALL PROVIDE GROUND COVER ON EXPOSED SLOPES IN ACCORDANCE WITH THE "SOIL STABILIZATION TIMEFRAMES", SEE EC-3.
- NOTE: PLACE TEMPORARY ROCK SEDIMENT DAMS TYPE - B AND TEMPORARY ROCK SILT CHECKS TYPE - A AT DRAINAGE OUTLETS.

MARUTI CONSTRUCTION CO LLC
DB 3283 PG 1023

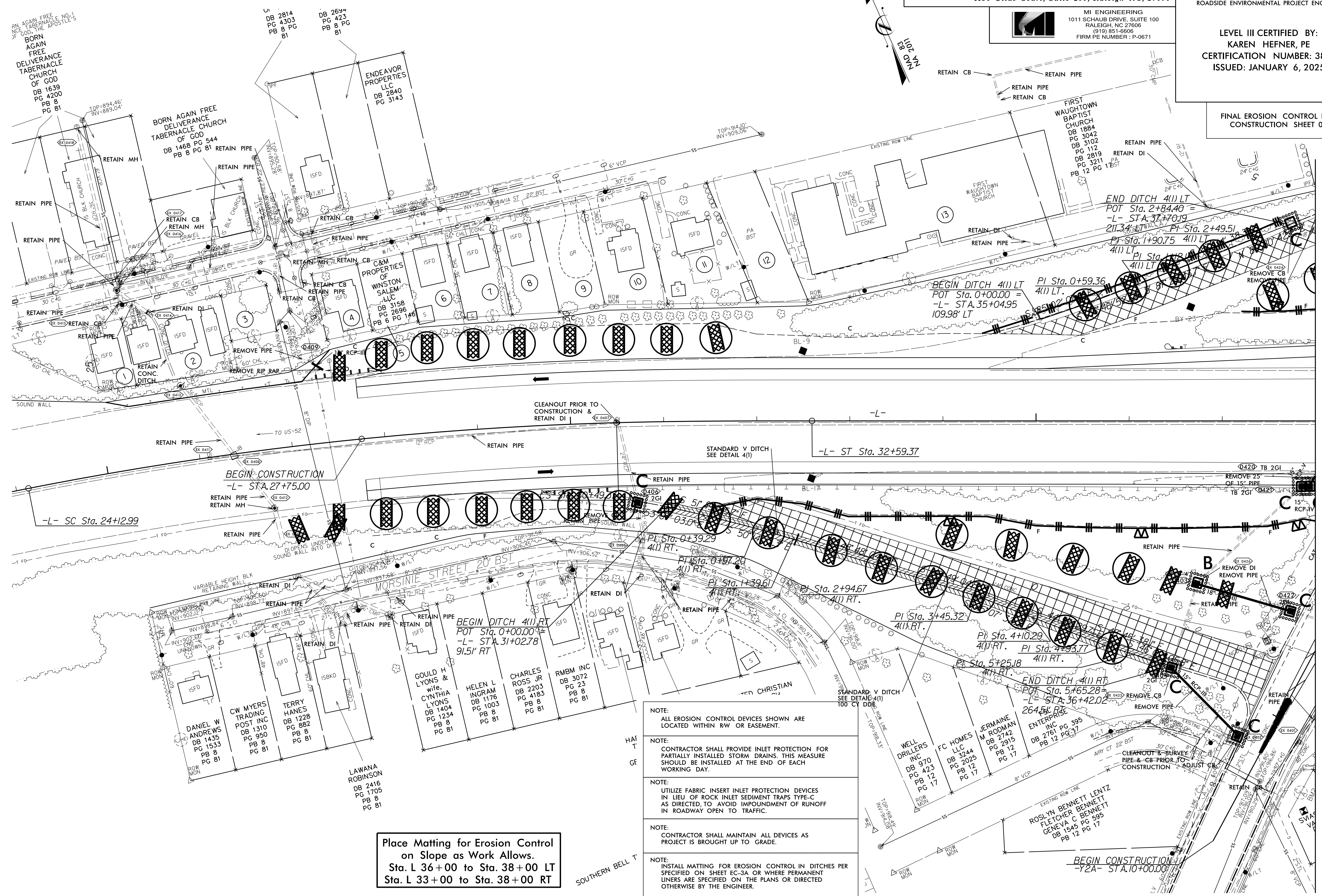
SEE SHEET 11 FOR -Y1- PROFILE
SEE SHEET 16 FOR -RPD- PROFILE

I:\E\2025
N:\C\H\dr\19003-1-5880-Winston-Salem\Erosion Control\CADD\PSH\5880_DRN_EC_08_psh_08.dgn
&USERNAME\B

1/6/2025 N:\NC_Hydro\M19003_1-5880_Minston-Salem-Erosion Control\CADD\PSH\5880_DRN_EC_09_psh_04.dgn \$USER\$

PROJECT REFERENCE NO.	SHEET NO.
1-5880	EC-09/CONST.4
RW SHEET NO.	
ROADSIDE ENVIRONMENTAL PROJECT ENGINEER	
LEVEL III CERTIFIED BY: KAREN HEFNER, PE CERTIFICATION NUMBER: 3824 ISSUED: JANUARY 6, 2025	

FINAL EROSION CONTROL FOR CONSTRUCTION SHEET 04



Place Matting for Erosion Control on Slope as Work Allows.
Sta. L 36+00 to Sta. 38+00 LT
Sta. L 33+00 to Sta. 38+00 RT

- NOTE: ALL EROSION CONTROL DEVICES SHOWN ARE LOCATED WITHIN RW OR EASEMENT.
- NOTE: CONTRACTOR SHALL PROVIDE INLET PROTECTION FOR PARTIALLY INSTALLED STORM DRAINS. THIS MEASURE SHOULD BE INSTALLED AT THE END OF EACH WORKING DAY.
- NOTE: UTILIZE FABRIC INSERT INLET PROTECTION DEVICES IN LIEU OF ROCK INLET SEDIMENT TRAPS TYPE-C AS DIRECTED, TO AVOID IMPOUNDMENT OF RUNOFF IN ROADWAY OPEN TO TRAFFIC.
- NOTE: CONTRACTOR SHALL MAINTAIN ALL DEVICES AS PROJECT IS BROUGHT UP TO GRADE.
- NOTE: INSTALL MATTING FOR EROSION CONTROL IN DITCHES PER SPECIFIED ON SHEET EC-3A OR WHERE PERMANENT LINERS ARE SPECIFIED ON THE PLANS OR DIRECTED OTHERWISE BY THE ENGINEER.
- NOTE: CONTRACTOR SHALL PROVIDE GROUND COVER ON EXPOSED SLOPES IN ACCORDANCE WITH THE "SOIL STABILIZATION TIMEFRAMES", SEE EC-3.

SEE SHEET 9 FOR -L- PROFILES

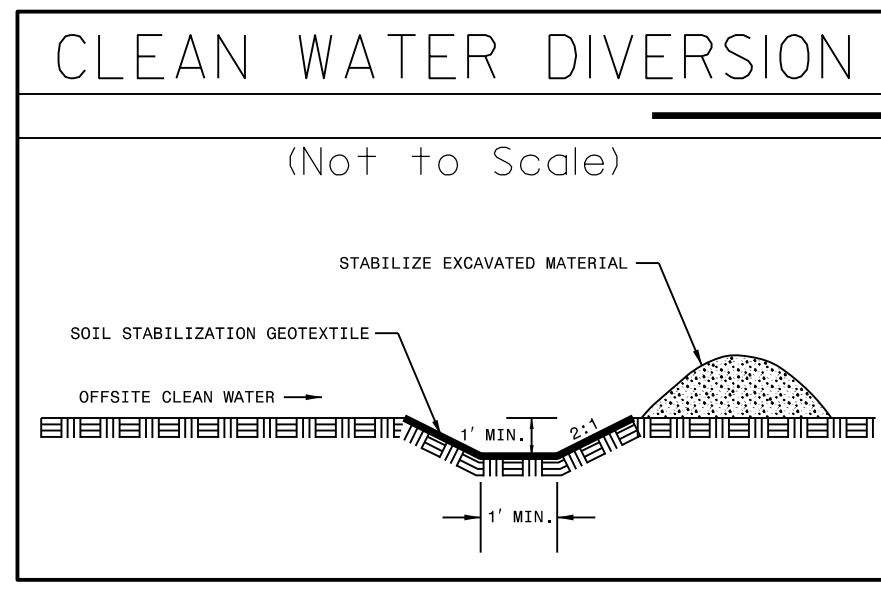
MATCH LINE STA. 38+00.00 SEE SHEET 05

1/6/2025
 N:\NC_Hydro\Winston-Salem\Erosion Control\CADD\PSH15880_DRN_EC_10_psh_05.dgn
 S:\USER\AME\15880_1-5880-Winston-Salem\Erosion Control\CADD\PSH15880_DRN_EC_10_psh_05.dgn

Prepared in the Office of:
JMT JOHNSON, MIRMIRAN, & THOMPSON, INC.
 1130 Situs Court, Suite 200, Raleigh NC, 27606

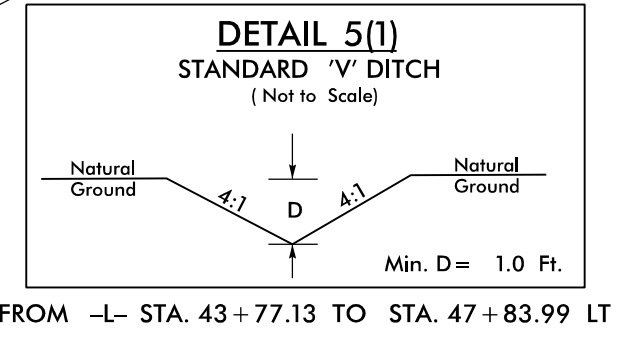
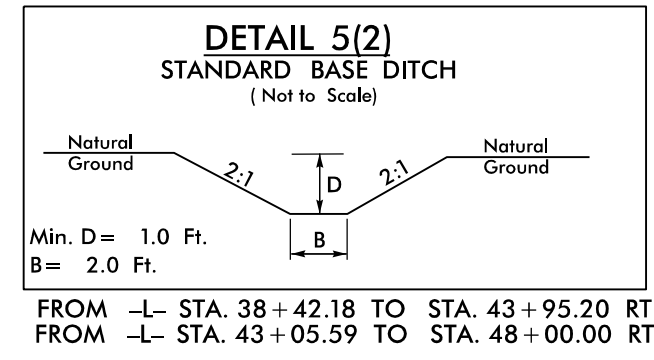
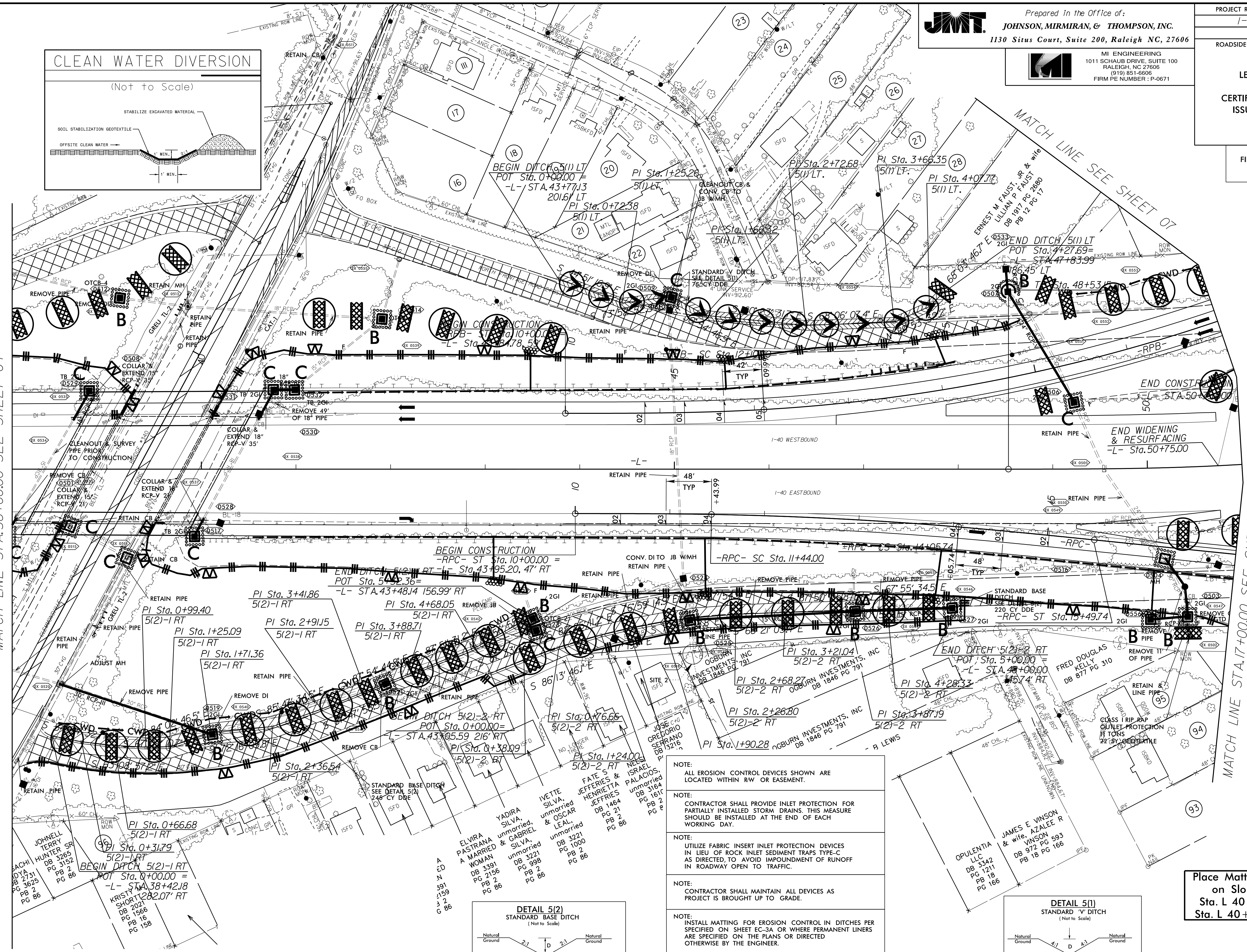
MI ENGINEERING
 1011 SCHAUH DRIVE, SUITE 100
 RALEIGH, NC 27606
 (919) 851-6606
 FIRM PE NUMBER: P-0671

PROJECT REFERENCE NO.	SHEET NO.
1-5880	EC-10/CONST.5
RW SHEET NO.	
ROADSIDE ENVIRONMENTAL PROJECT ENGINEER	
LEVEL III CERTIFIED BY: KAREN HEFNER, PE CERTIFICATION NUMBER: 3824 ISSUED: JANUARY 6, 2025	



MATCH LINE STA. 38+00.00 SEE SHEET 04

MATCH LINE STA. 17+00.00 SEE SHEET 06



- NOTE: ALL EROSION CONTROL DEVICES SHOWN ARE LOCATED WITHIN RW OR EASEMENT.
- NOTE: CONTRACTOR SHALL PROVIDE INLET PROTECTION FOR PARTIALLY INSTALLED STORM DRAINS. THIS MEASURE SHOULD BE INSTALLED AT THE END OF EACH WORKING DAY.
- NOTE: UTILIZE FABRIC INSERT INLET PROTECTION DEVICES IN LIEU OF ROCK INLET SEDIMENT TRAPS TYPE-C AS DIRECTED, TO AVOID IMPOUNDMENT OF RUNOFF IN ROADWAY OPEN TO TRAFFIC.
- NOTE: CONTRACTOR SHALL MAINTAIN ALL DEVICES AS PROJECT IS BROUGHT UP TO GRADE.
- NOTE: INSTALL MATTING FOR EROSION CONTROL IN DITCHES PER SPECIFIED ON SHEET EC-3A OR WHERE PERMANENT LINERS ARE SPECIFIED ON THE PLANS OR DIRECTED OTHERWISE BY THE ENGINEER.
- NOTE: CONTRACTOR SHALL PROVIDE GROUND COVER ON EXPOSED SLOPES IN ACCORDANCE WITH THE "SOIL STABILIZATION TIMEFRAMES", SEE EC-3.

Place Matting for Erosion Control on Slope as Work Allows.
 Sta. L 40+50 to Sta. 48+00 LT
 Sta. L 40+50 to Sta. 50+50 RT

SEE SHEET 10 FOR -L- PROFILES
 SEE SHEET 15 FOR -RPC- PROFILE
 SEE SHEET 16 FOR -RPD- PROFILE

8.17.799

NAD 83
NA 2011

Place Matting for Erosion Control
on Slope as Work Allows.
Sta. RPC 17+00 to Sta. 19+50 RT
Sta. RPC 23+50 to Sta. 24+50 RT
Sta. YI 28+00 to Sta. 29+00 LT
Sta. YI 23+50 to Sta. 24+50 RT



Prepared in the Office of:
JOHNSON, MIRMIRAN, & THOMPSON, INC.
1130 Situs Court, Suite 200, Raleigh NC, 27606

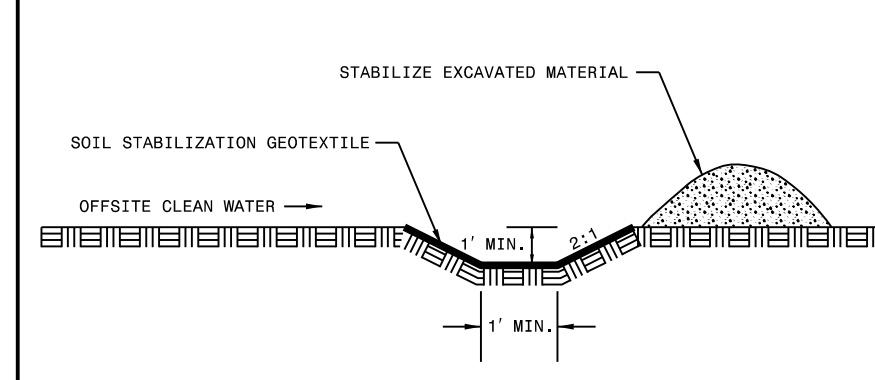


MI ENGINEERING
1011 SCHAUH DRIVE, SUITE 100
RALEIGH, NC 27606
(919) 851-6606
FIRM PE NUMBER: P-0671

PROJECT REFERENCE NO.	SHEET NO.
1-5880	EC-II/CONST.6
RW SHEET NO.	
ROADSIDE ENVIRONMENTAL PROJECT ENGINEER	
LEVEL III CERTIFIED BY: KAREN HEFNER, PE CERTIFICATION NUMBER: 3824 ISSUED: MAY 2, 2025	

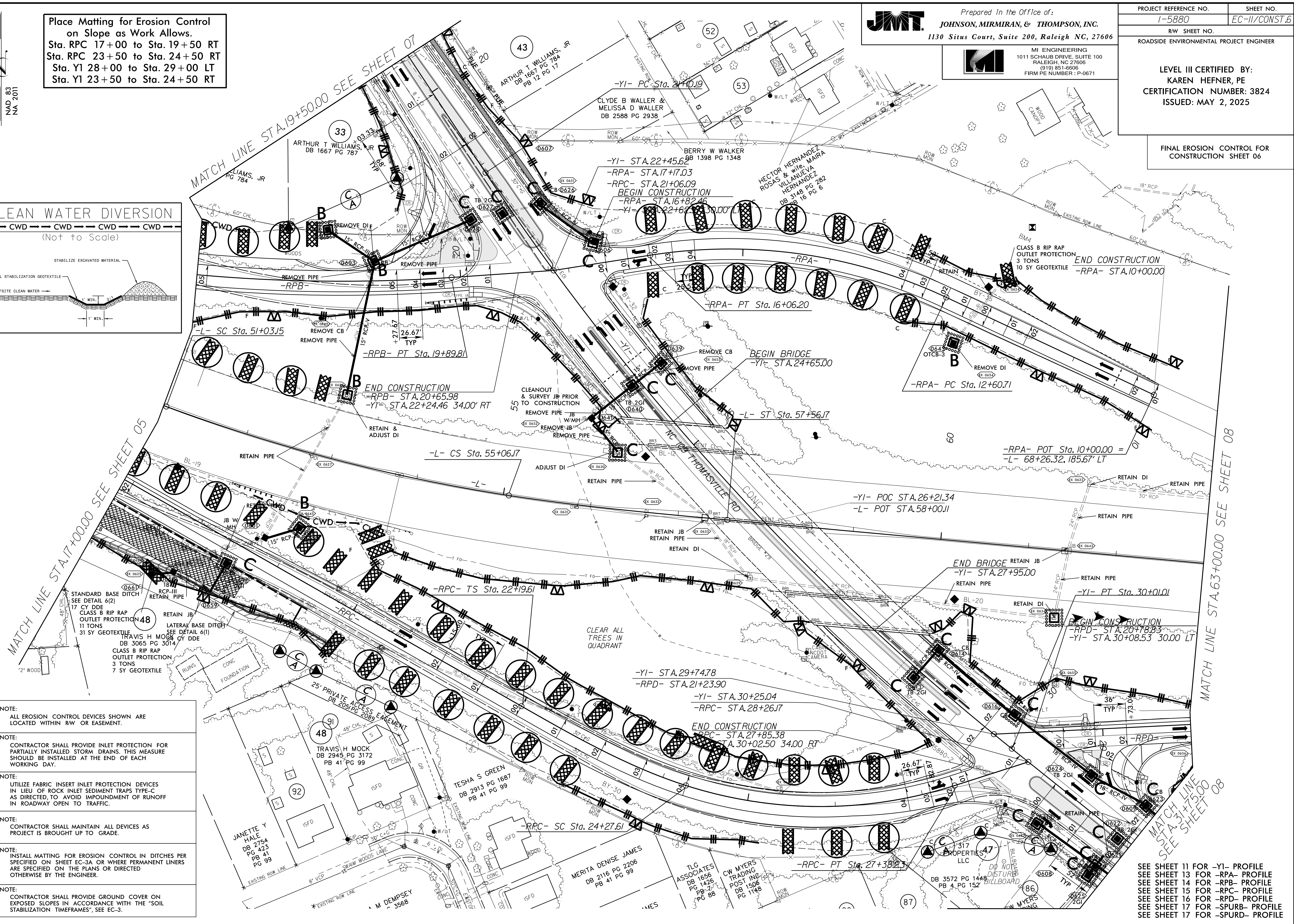
FINAL EROSION CONTROL FOR
CONSTRUCTION SHEET 06

CLEAN WATER DIVERSION



5/2/2025
N:\NC_Hydro\03_M9003_1-5880-Winston-Salem-Erosion_Contra\CADD_PSH\5880_DRM_EC_II_psh_06.dgn
MI ENGINEERING, RALEIGH NC

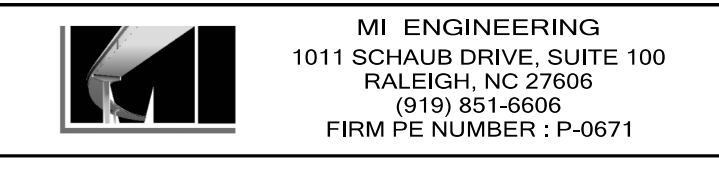
- NOTE:
ALL EROSION CONTROL DEVICES SHOWN ARE LOCATED WITHIN RW OR EASEMENT.
- NOTE:
CONTRACTOR SHALL PROVIDE INLET PROTECTION FOR PARTIALLY INSTALLED STORM DRAINS. THIS MEASURE SHOULD BE INSTALLED AT THE END OF EACH WORKING DAY.
- NOTE:
UTILIZE FABRIC INSERT INLET PROTECTION DEVICES IN LIEU OF ROCK INLET SEDIMENT TRAPS TYPE-C AS DIRECTED, TO AVOID IMPOUNDMENT OF RUNOFF IN ROADWAY OPEN TO TRAFFIC.
- NOTE:
CONTRACTOR SHALL MAINTAIN ALL DEVICES AS PROJECT IS BROUGHT UP TO GRADE.
- NOTE:
INSTALL MATTING FOR EROSION CONTROL IN DITCHES PER SPECIFIED ON SHEET EC-3A OR WHERE PERMANENT LINERS ARE SPECIFIED ON THE PLANS OR DIRECTED OTHERWISE BY THE ENGINEER.
- NOTE:
CONTRACTOR SHALL PROVIDE GROUND COVER ON EXPOSED SLOPES IN ACCORDANCE WITH THE "SOIL STABILIZATION TIMEFRAMES", SEE EC-3.



SEE SHEET 11 FOR -YI- PROFILE
SEE SHEET 13 FOR -RPA- PROFILE
SEE SHEET 14 FOR -RPB- PROFILE
SEE SHEET 15 FOR -RPC- PROFILE
SEE SHEET 16 FOR -RPD- PROFILE
SEE SHEET 17 FOR -SPURB- PROFILE
SEE SHEET 17 FOR -SPURD- PROFILE



Prepared in the Office of:
JOHNSON, MIRMIRAN, & THOMPSON, INC.
 1130 Situs Court, Suite 200, Raleigh NC, 27606



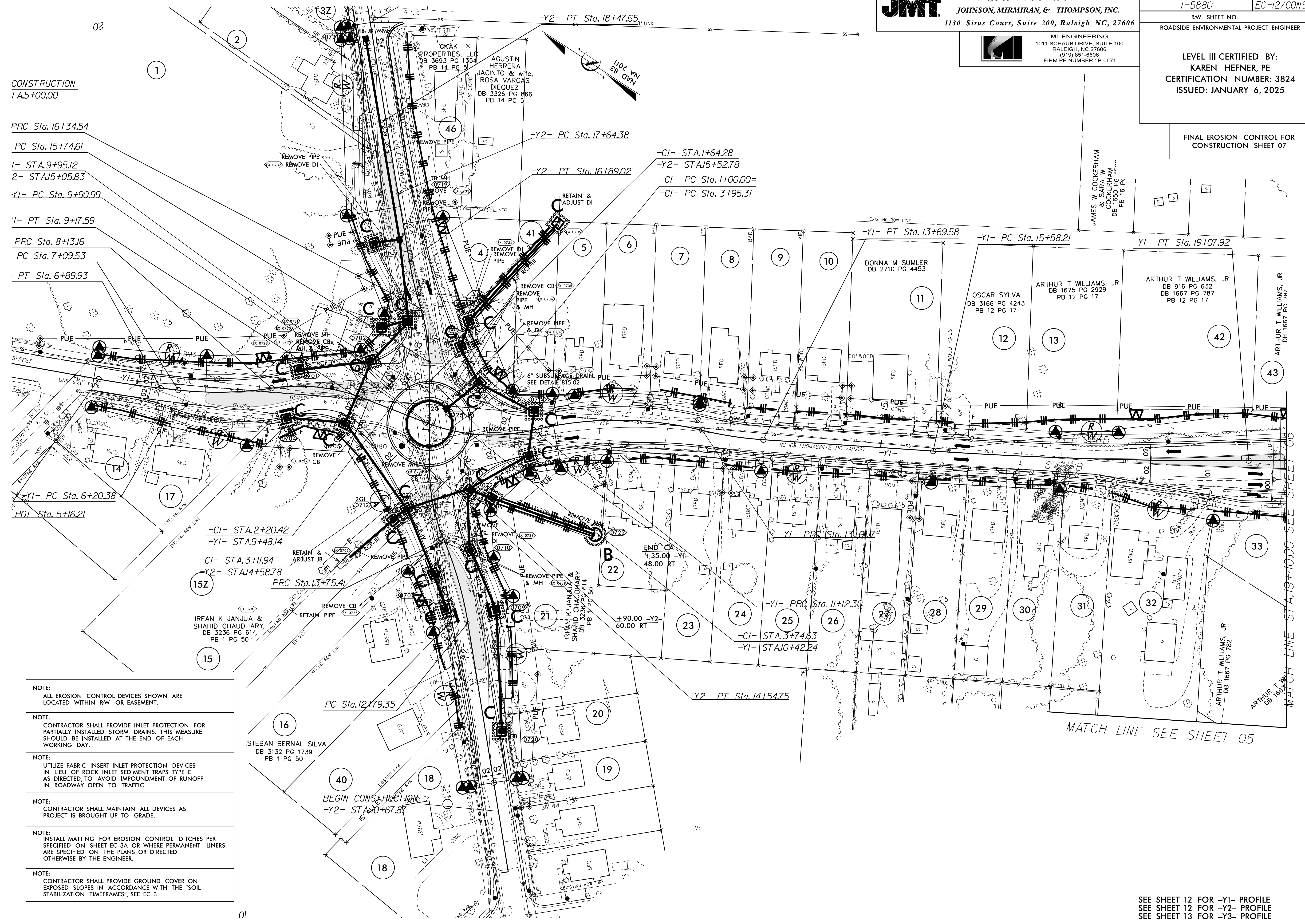
MI ENGINEERING
 1011 SCHAUB DRIVE, SUITE 100
 RALEIGH, NC 27606
 (919) 851-6606
 FIRM PE NUMBER: P-0671

PROJECT REFERENCE NO.	SHEET NO.
1-5880	EC-12/CONST.7
RW SHEET NO.	
ROADSIDE ENVIRONMENTAL PROJECT ENGINEER	
LEVEL III CERTIFIED BY: KAREN HEFNER, PE CERTIFICATION NUMBER: 3824 ISSUED: JANUARY 6, 2025	

FINAL EROSION CONTROL FOR CONSTRUCTION SHEET 07

CONSTRUCTION
 TA5+00.00

- PRC Sta. 16+34.54
- PC Sta. 15+74.61
- 1- STA. 9+95.12
- 2- STA. 5+05.83
- Y1- PC Sta. 9+90.99
- 1'- PT Sta. 9+17.59
- PRC Sta. 8+13.16
- PC Sta. 7+09.53
- PT Sta. 6+89.93



- NOTE:
 ALL EROSION CONTROL DEVICES SHOWN ARE LOCATED WITHIN RW OR EASEMENT.
- NOTE:
 CONTRACTOR SHALL PROVIDE INLET PROTECTION FOR PARTIALLY INSTALLED STORM DRAINS. THIS MEASURE SHOULD BE INSTALLED AT THE END OF EACH WORKING DAY.
- NOTE:
 UTILIZE FABRIC INSERT INLET PROTECTION DEVICES IN LIEU OF ROCK INLET SEDIMENT TRAPS TYPE-C AS DIRECTED, TO AVOID IMPOUNDMENT OF RUNOFF IN ROADWAY OPEN TO TRAFFIC.
- NOTE:
 CONTRACTOR SHALL MAINTAIN ALL DEVICES AS PROJECT IS BROUGHT UP TO GRADE.
- NOTE:
 INSTALL MATTING FOR EROSION CONTROL DITCHES PER SPECIFIED ON SHEET EC-3A OR WHERE PERMANENT LINERS ARE SPECIFIED ON THE PLANS OR DIRECTED OTHERWISE BY THE ENGINEER.
- NOTE:
 CONTRACTOR SHALL PROVIDE GROUND COVER ON EXPOSED SLOPES IN ACCORDANCE WITH THE "SOIL STABILIZATION TIMEFRAMES", SEE EC-3.

1/6/2025
 N:\NC_Hydr\c\m\9003_1-5880-Winston-Salem\Erosion Control\CADD\PSH\5880_DRN_EC_12_psh_07.dgn
 \$USER\$

SEE SHEET 12 FOR -Y1- PROFILE
 SEE SHEET 12 FOR -Y2- PROFILE
 SEE SHEET 13 FOR -Y3- PROFILE



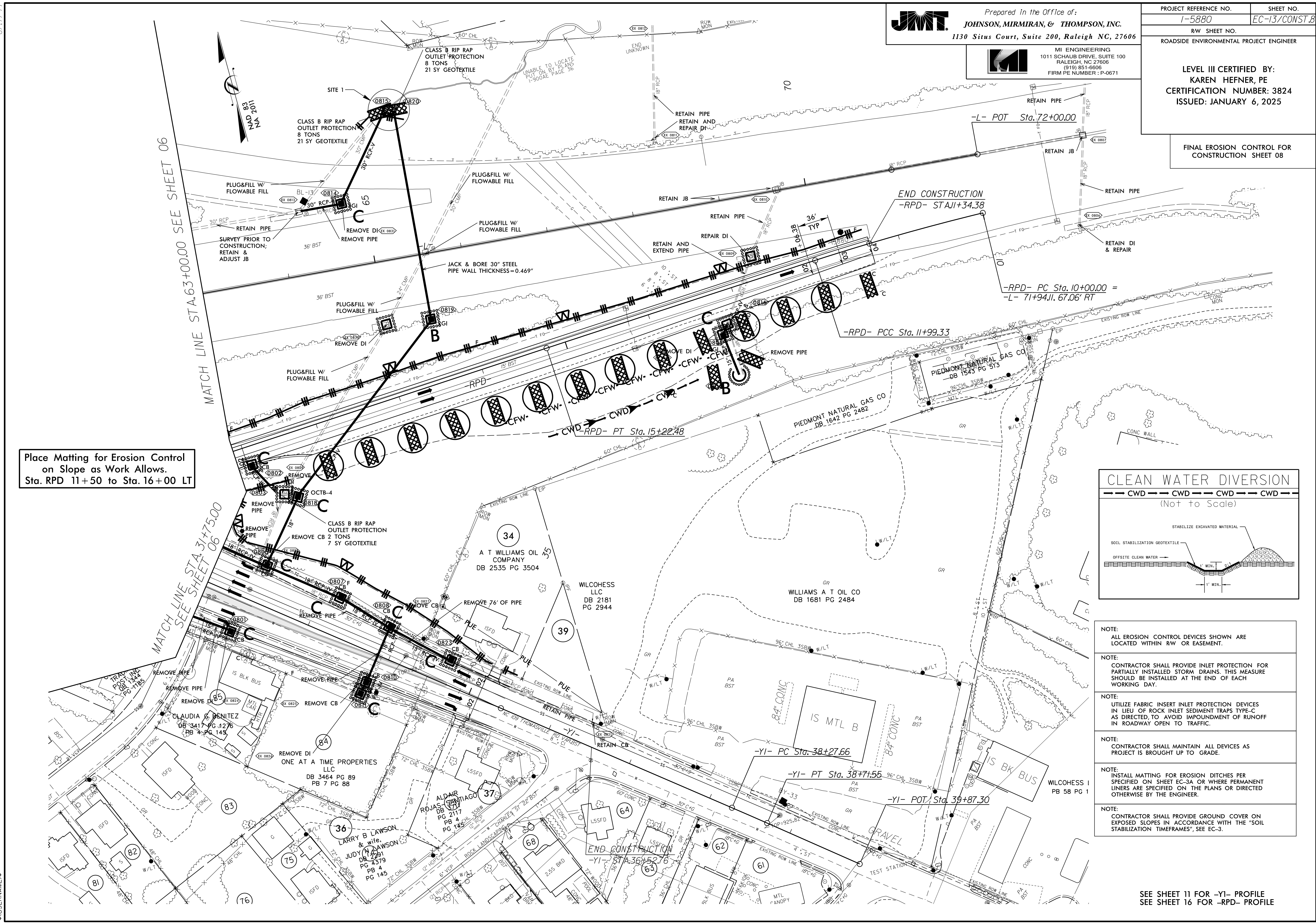
Prepared in the Office of:
JOHNSON, MIRMIRAN, & THOMPSON, INC.
 1130 Situs Court, Suite 200, Raleigh NC, 27606



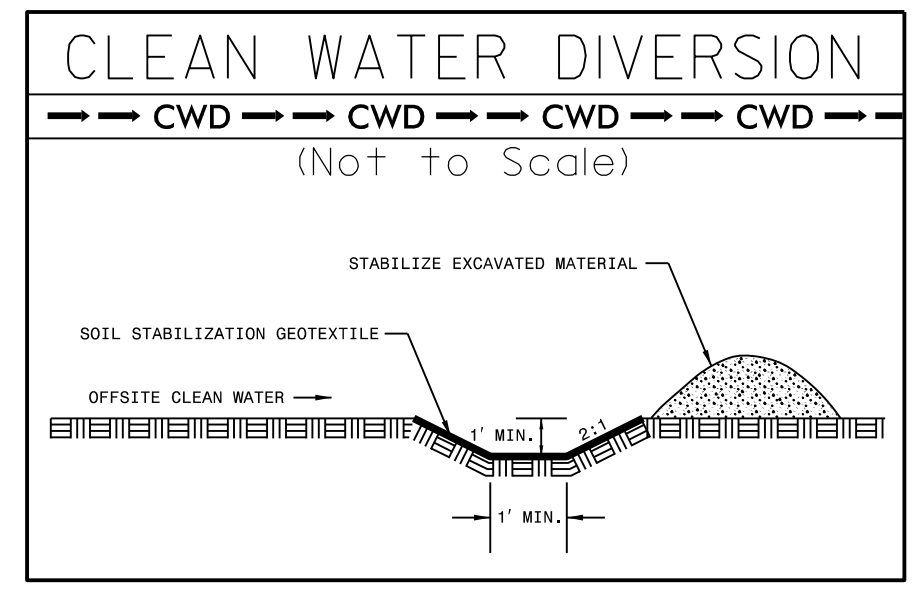
MI ENGINEERING
 1011 SCHUBERT DRIVE, SUITE 100
 RALEIGH, NC 27606
 (919) 851-6606
 FIRM PE NUMBER: P-0671

PROJECT REFERENCE NO.	SHEET NO.
1-5880	EC-13/CONST.8
RW SHEET NO.	
ROADSIDE ENVIRONMENTAL PROJECT ENGINEER	
LEVEL III CERTIFIED BY: KAREN HEFNER, PE CERTIFICATION NUMBER: 3824 ISSUED: JANUARY 6, 2025	

FINAL EROSION CONTROL FOR
CONSTRUCTION SHEET 08



Place Matting for Erosion Control
on Slope as Work Allows.
Sta. RPD 11+50 to Sta. 16+00 LT



- NOTE:
ALL EROSION CONTROL DEVICES SHOWN ARE LOCATED WITHIN ROW OR EASEMENT.
- NOTE:
CONTRACTOR SHALL PROVIDE INLET PROTECTION FOR PARTIALLY INSTALLED STORM DRAINS. THIS MEASURE SHOULD BE INSTALLED AT THE END OF EACH WORKING DAY.
- NOTE:
UTILIZE FABRIC INSERT INLET PROTECTION DEVICES IN LIEU OF ROCK INLET SEDIMENT TRAPS TYPE-C AS DIRECTED, TO AVOID IMPOUNDMENT OF RUNOFF IN ROADWAY OPEN TO TRAFFIC.
- NOTE:
CONTRACTOR SHALL MAINTAIN ALL DEVICES AS PROJECT IS BROUGHT UP TO GRADE.
- NOTE:
INSTALL MATTING FOR EROSION DITCHES PER SPECIFIED ON SHEET EC-3A OR WHERE PERMANENT LINERS ARE SPECIFIED ON THE PLANS OR DIRECTED OTHERWISE BY THE ENGINEER.
- NOTE:
CONTRACTOR SHALL PROVIDE GROUND COVER ON EXPOSED SLOPES IN ACCORDANCE WITH THE "SOIL STABILIZATION TIMEFRAMES", SEE EC-3.

SEE SHEET 11 FOR -YI- PROFILE
SEE SHEET 16 FOR -RPD- PROFILE

1/6/2025 N:\NC\Hydr\c\19003\1-5880-Winston-Salem-Erosion Control\CADD\PSH\5880_DRN_EC_13_psh_08.dgn \$USER\$