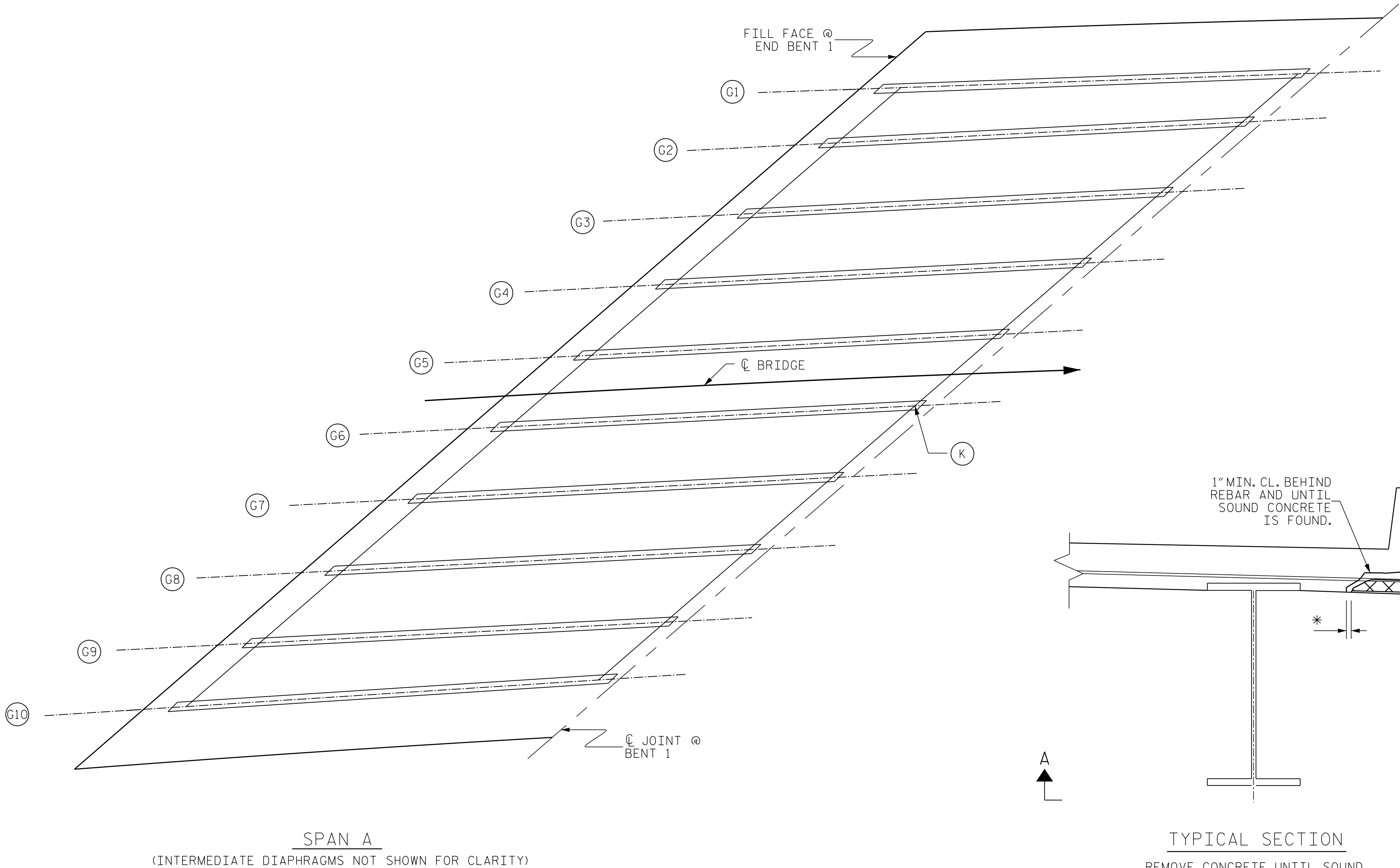


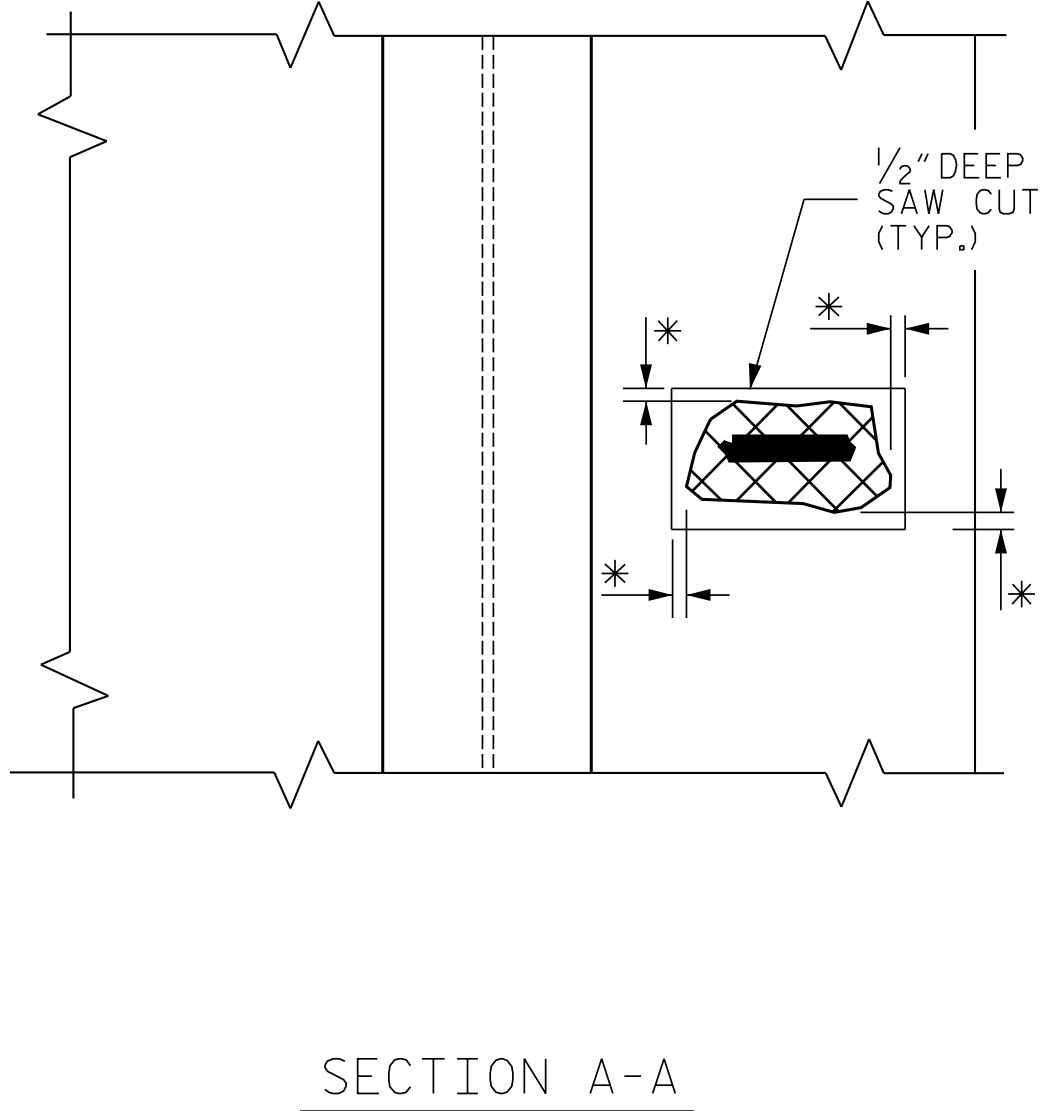
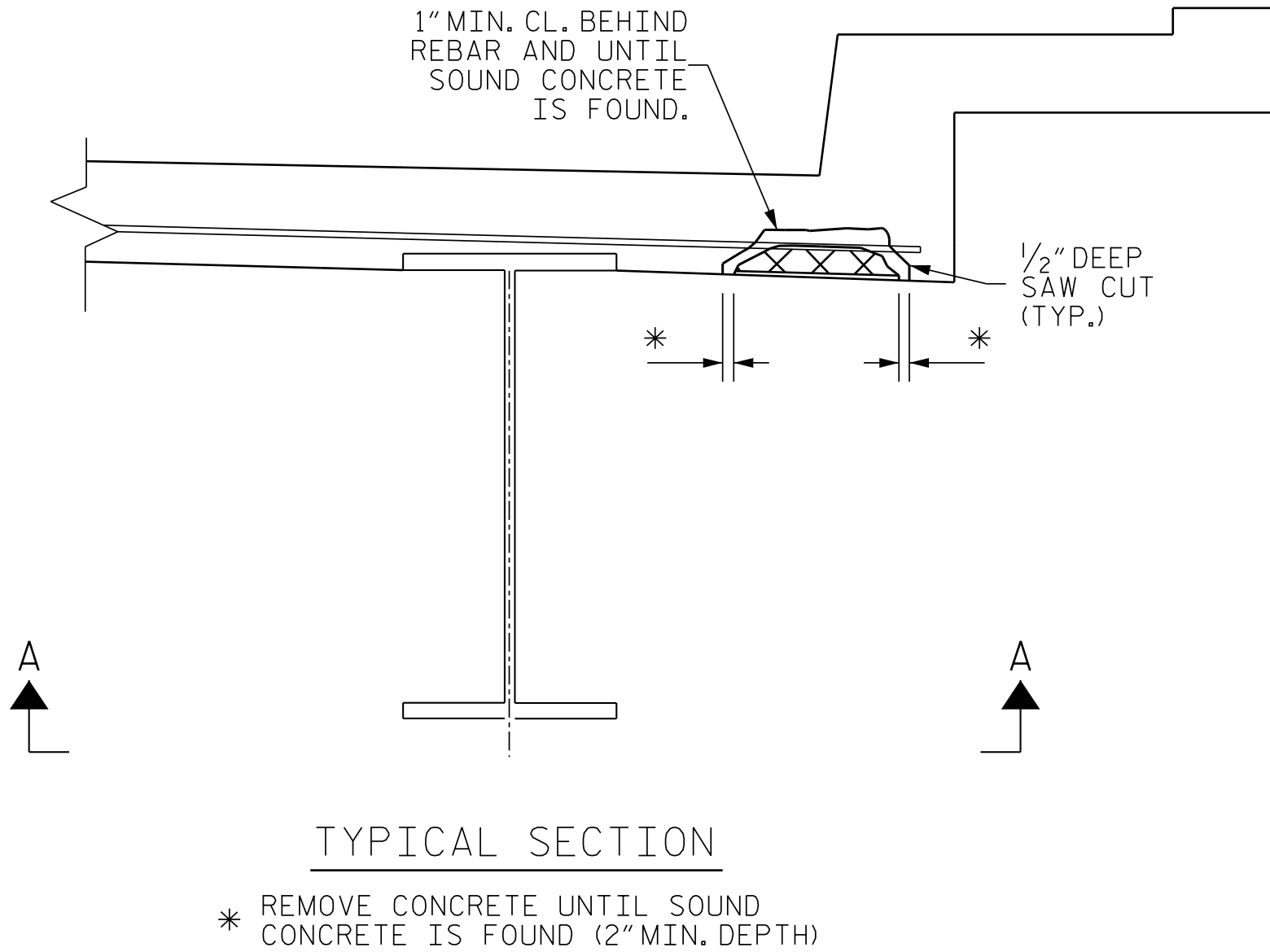
BC:\c029\DWG\JMT-jaw-00\Documents\Proj\0-jaw-00\DesignStructures\Bridge\330029-2_Plan\4 Final Plans\01.D21 I5880_DJRL.D11
DATE: 5/5/2025
TIME: 5/5/2025



AS-BUILT QUANTITY REPAIR TABLE				
DECK UNDERSIDE REPAIRS-SPAN A				
SHOTCRETE REPAIRS	ESTIMATE		ACTUAL	
	AREA SQ. FT.	VOLUME CU. FT.	AREA SQ. FT.	VOLUME CU. FT.
UNDERSIDE OF DECK	0.0	0.0		
UNDERSIDE OF OVERHANG	0.0	0.0		
DIAPHRAGM	0.0	0.0		
OTHER REPAIRS		ESTIMATE	ACTUAL	

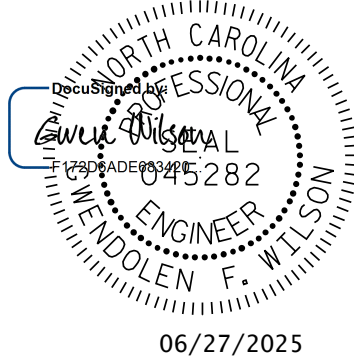
VALUES IN CHART REPRESENT ESTIMATED REPAIR TOTALS AFTER REMOVAL OF UNSOUND CONCRETE, MINIMUM OF 1" BEHIND REBAR AND MINIMUM 2" CLEARANCE TO SAWCUT. SEE REPAIR DETAILS.

- # GIRDER NUMBER
- (K) STEEL BEARING KEEPER ANGLE ASSEMBLY
- SHOTCRETE REPAIRS
- BEARING REPLACEMENT



OVERHANG REPAIR DETAILS

BEAM REPAIR QUANTITY TABLE			
BEARING REPLACEMENT		STEEL BEARING KEEPER ANGLE ASSEMBLY	
EA.		EA.	
ESTIMATE	ACTUAL	ESTIMATE	ACTUAL
0		1	



**DOCUMENT NOT CONSIDERED FINAL
UNLESS ALL SIGNATURES COMPLETED**

JMT Johnson, Mirmiran, & Thompson, Inc.
4700 Falls of Neuse Rd, Suite 100,
Raleigh, NC 27609
License No: C-3097

DWN. BY: BC DATE: 10/2024
CHKD. BY: GFW DATE: 11/2024

NOTES

REPAIR LOCATIONS AND ESTIMATED QUANTITIES ARE BASED ON THE BEST INFORMATION AVAILABLE. IF ADDITIONAL REPAIRS NOT SHOWN ON THE DRAWINGS ARE DEEMED NECESSARY BY THE ENGINEER, THE ENGINEER WILL NOTE ON THE DRAWINGS THE APPROXIMATE LOCATIONS AND DESCRIPTION OF THE REPAIRS AND ENTER THE ACTUAL QUANTITIES INTO THE AS-BUILT REPAIR QUANTITY TABLE.

CONTRACTOR SHALL SAW CUT TO A NORMAL DEPTH OF 1/2" BUT REINFORCING STEEL SHALL NOT BE DAMAGED.

CONTRACTOR SHALL REMOVE SURFACE CONCRETE TO VERIFY THAT SAWCUT DEPTH WILL NOT DAMAGE EXISTING REINFORCING STEEL.

SHOTCRETE REPAIRS MAY BE REPLACED WITH CONCRETE REPAIRS WITH THE APPROVAL OF THE ENGINEER.

FOR SHOTCRETE REPAIRS, SEE SPECIAL PROVISIONS.

FOR STEEL BEARING KEEPER ANGLE ASSEMBLY, SEE SPECIAL PROVISIONS.

FOR STEEL BEARING KEEPER ANGLE ASSEMBLY DETAILS, SEE "STEEL BEARING KEEPER ANGLE ASSEMBLY DETAILS" SHEET.

FOR SHOTCRETE REPAIRS LOCATED IN THE UNDERSIDE OF THE DECK OVERHANG, SEE "OVERHANG REPAIR DETAILS".

FOR BEARING REPLACEMENT, SEE SPECIAL PROVISIONS.

PROJECT NO. I-5880
FORSYTH COUNTY
BRIDGE: 330029

SHEET 1 OF 4

STATE OF NORTH CAROLINA
DEPARTMENT OF TRANSPORTATION
RALEIGH

DECK UNDERSIDE REPAIR
SPAN A

REVISIONS						SHEET NO. S1-11
NO.	BY:	DATE:	NO.	BY:	DATE:	
1			3			TOTAL SHEETS 21
2			4			