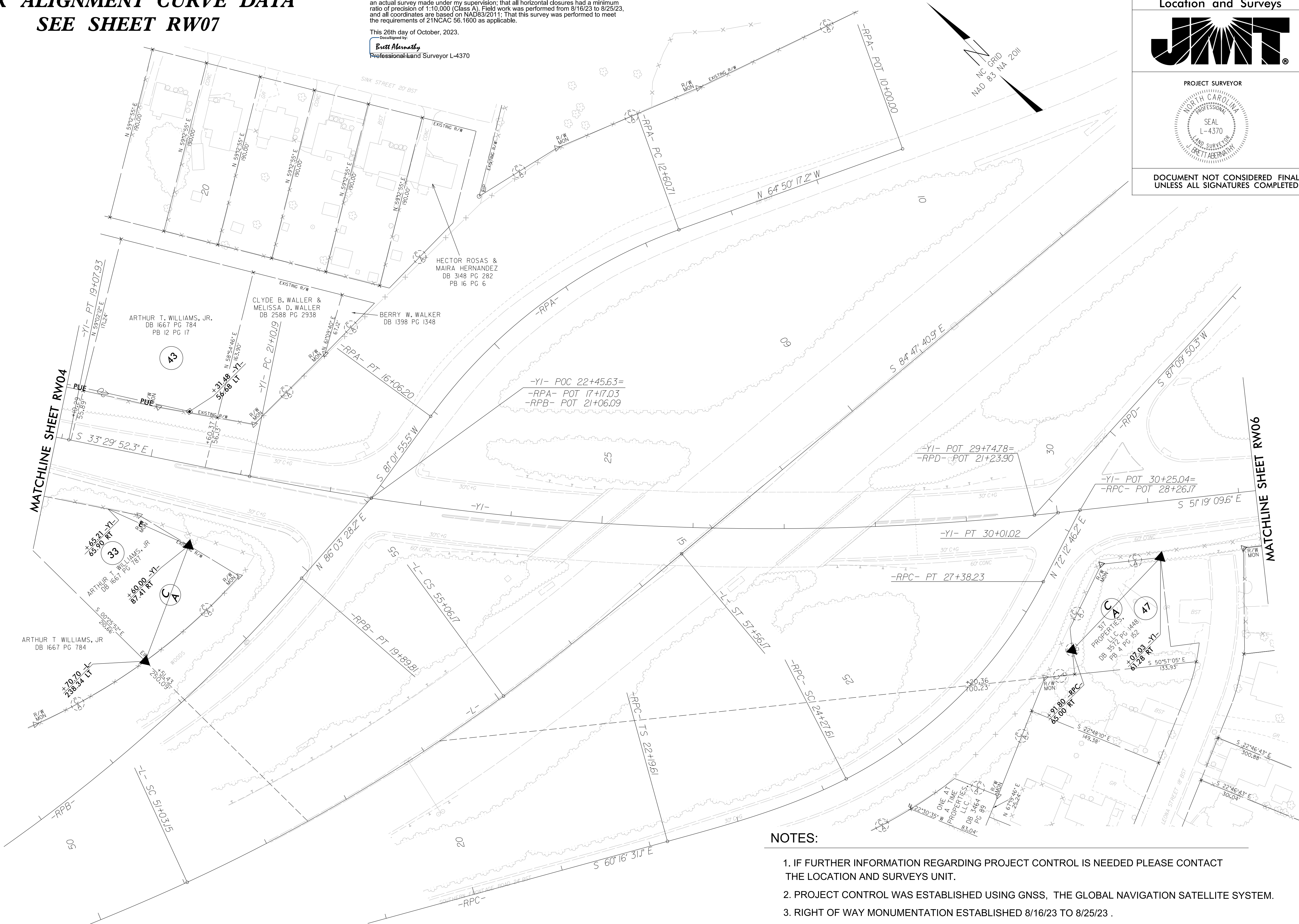


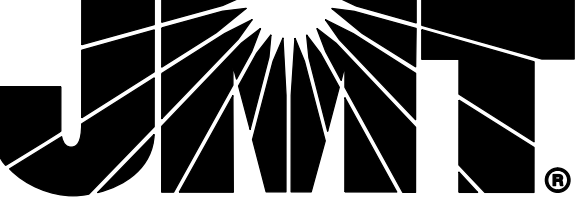

REVISIONS

FOR ALIGNMENT CURVE DATA
SEE SHEET RW07

I, J. Brett Abernathy, certify that the right of way and permanent easement monumentation for this project shown herein was completed under my direct and responsible charge from an actual survey made under my supervision; that all horizontal closures had a minimum ratio of precision of 1:10,000 (Class A). Field work was performed from 8/16/23 to 8/25/23, and all coordinates are based on NAD83/2011; That this survey was performed to meet the requirements of 21NCAC 56.1600 as applicable.

This 26th day of October, 2023.
Desigined by:
Brett Abernathy
Professional Land Surveyor L-4370



PROJECT REFERENCE NO.	SHEET NO.
I-5880	RW05
Location and Surveys	
	
PROJECT SURVEYOR	
	
DOCUMENT NOT CONSIDERED FINAL UNLESS ALL SIGNATURES COMPLETED	

NOTES:

1. IF FURTHER INFORMATION REGARDING PROJECT CONTROL IS NEEDED PLEASE CONTACT THE LOCATION AND SURVEYS UNIT.
2. PROJECT CONTROL WAS ESTABLISHED USING GNSS, THE GLOBAL NAVIGATION SATELLITE SYSTEM.
3. RIGHT OF WAY MONUMENTATION ESTABLISHED 8/16/23 TO 8/25/23 .