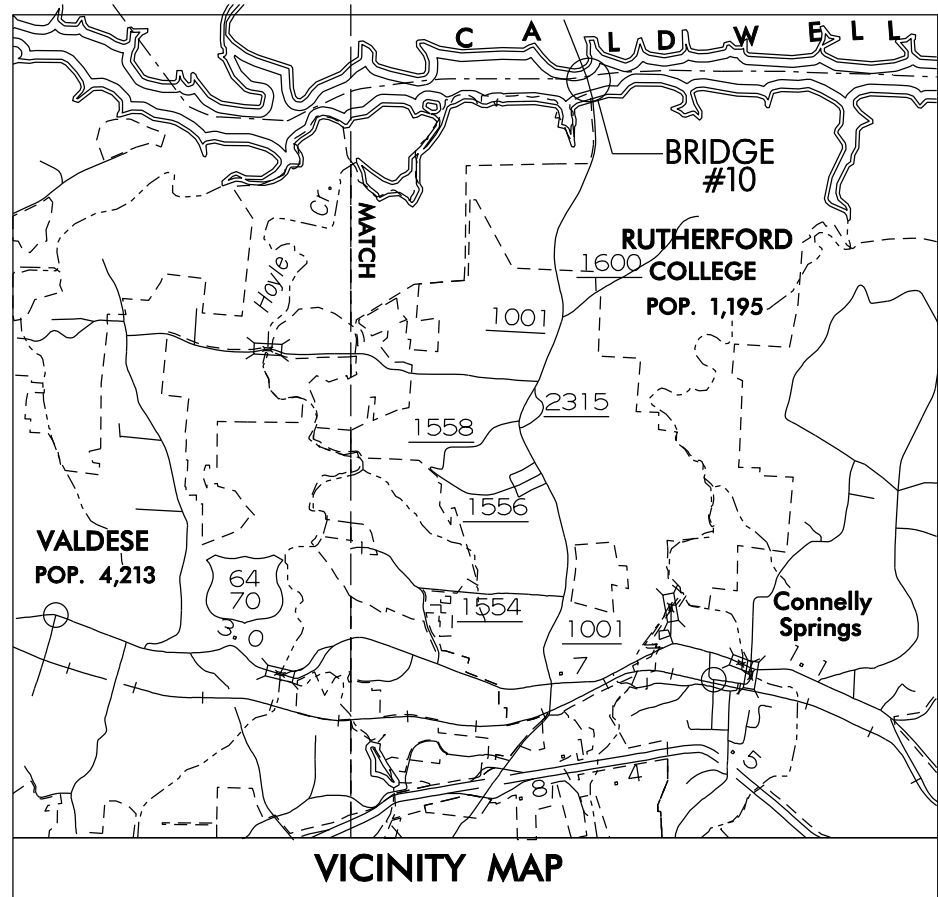


CONTRACT NO. D000059 TIP# BK-5101F

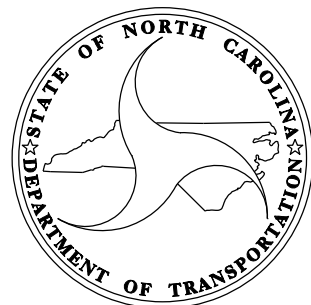
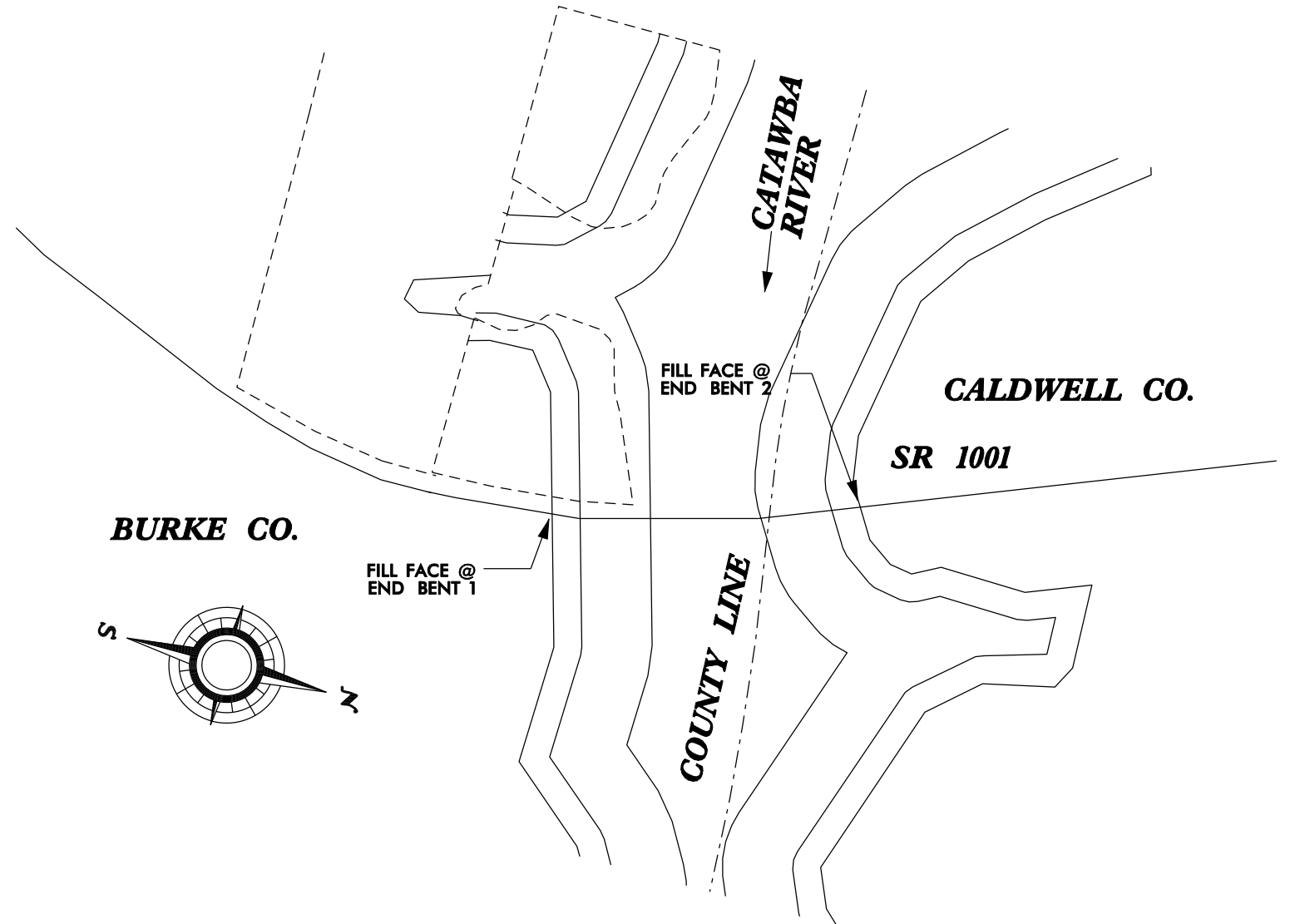


STATE OF NORTH CAROLINA
DIVISION OF HIGHWAYS

BURKE COUNTY

LOCATION: BRIDGE #10 ON SR1001 ACROSS CATAWBA RIVER, 0.9 MI. N. JCT. SR 1600.
TYPE OF WORK: BRIDGE DECK PRESERVATION

STATE	STATE PROJECT REFERENCE NO.	SHEET NO.	TOTAL SHEETS
N.C.	BK-5101F	1	8
STATE PROJ. NO.	P.A. PROJ. NO.	DESCRIPTION	
42579.1.1	BRSTP-1001(51)	PE	
42579.3.6	BRSTP-1001(51)	CONST	



DESIGN DATA

ADT 2005 = 9600
ADT 2025 = 19200

PROJECT LENGTH

LENGTH STRUCTURE PROJECT = .172 MILE

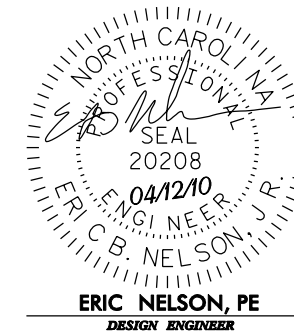
Prepared in the Office of:

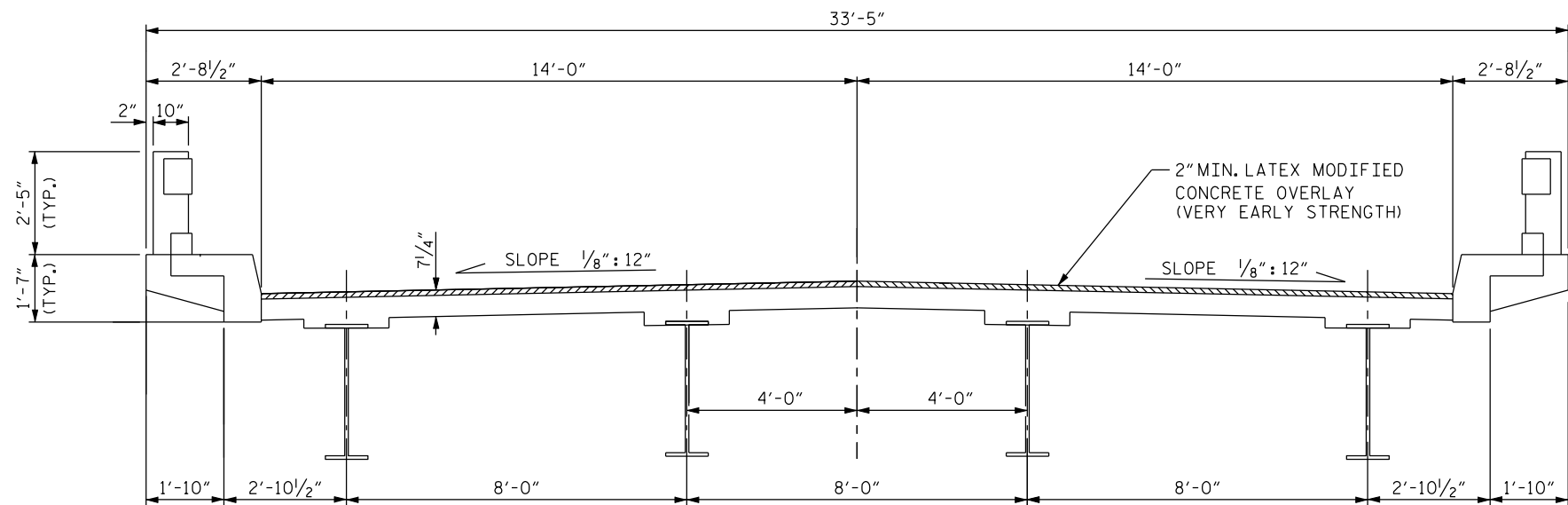
DIVISION OF BRIDGE MANAGEMENT

2006 STANDARD SPECIFICATIONS

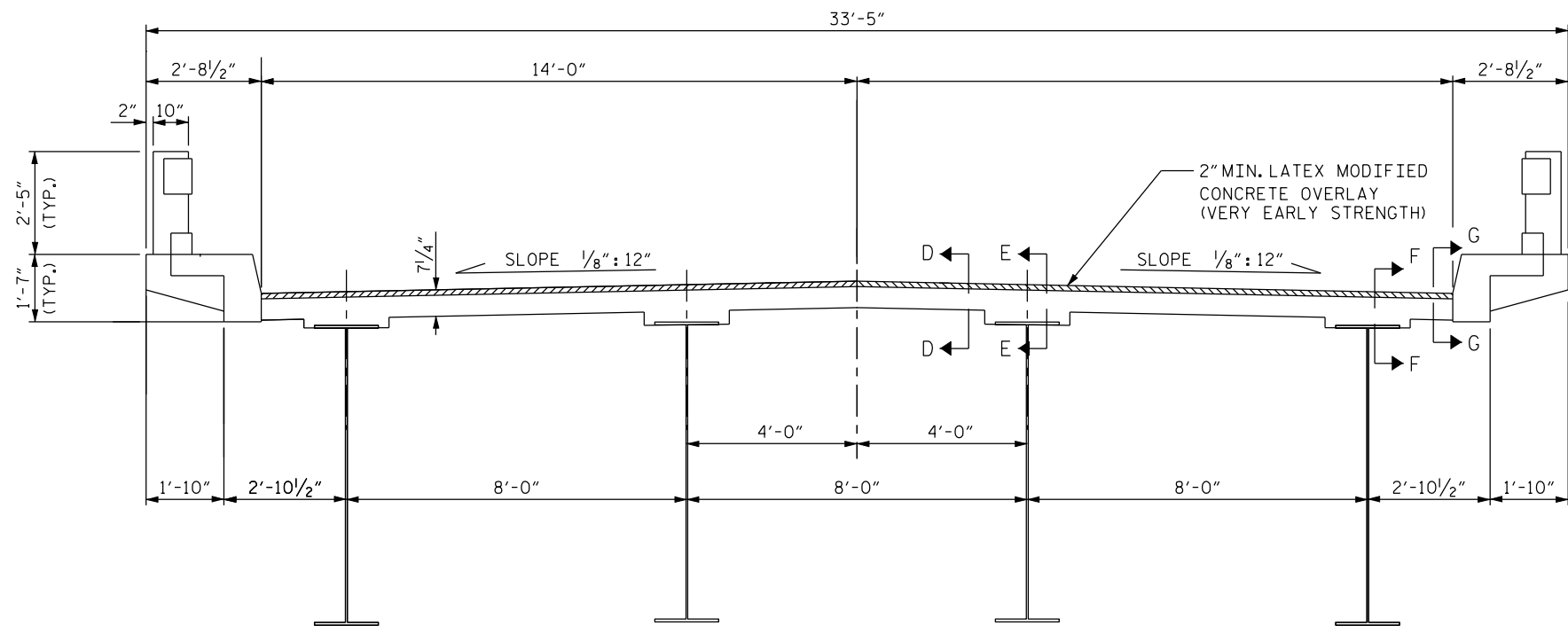
LETTING DATE:
5/20/2010

DAN HOLDERMAN, PE
PROJECT ENGINEER





TYPICAL SECTION -(SPANS "A", "G" & "H" 36" I-BEAM)



TYPICAL SECTION -(PLATE GIRDERS)

NOTES

FOR OVERLAY OF BRIDGE DECKS WITH LATEX MODIFIED CONCRETE-VERY EARLY STRENGTH, SEE SPECIAL PROVISIONS.

SEE SPECIAL PROVISIONS FOR SURFACE PREPARATION.

EXPANSION JOINTS SHALL BE COVERED WITH POLYETHYLENE SHEETING OR OTHER APPROVED DAMS PRIOR TO BEGINNING CLASS I SURFACE PREPARATION. SEE SPECIAL PROVISIONS.

FOR HYDRO-DEMOLITION, SEE SPECIAL PROVISIONS .

THE CONTRACTOR MUST COLLECT, TREAT AND DISPOSE OF RUN -OFF WATER FROM THE HYDRO- DEMOLITION PROCESS, SEE SPECIAL PROVISIONS.

THE BOUNDARIES OF AREAS IDENTIFIED FOR CLASS III SURFACE PREPARATION ARE APPROXIMATE. THE CONTRACTOR SHALL PROVIDE A METHOD OF HANDLING UNEXPECTED BLOW THROUGH OF DECK. SEE DETAIL.

THE CONSTRUCTION JOINTS SHALL BE SAWED NO MORE THAN 3 HOURS AFTER THE LATEX MODIFIED OVERLAY IS CAST. THE JOINT SHALL BE CLEANED OF ALL DEBRIS BEFORE THE SEALANT IS APPLIED. THE JOINT SEALER MATERIAL SHALL CONFORM WITH REQUIREMENTS OF TYPE SL LOW MODULUS SILICON SEALER.

FOR EVAZOTE JOINT SEALS, SEE SPECIAL PROVISIONS.

TOTAL BILL OF MATERIAL

** DECK SCARIFICATION	* CLASS I SURFACE PREPARATION	* CLASS II SURFACE PREPARATION	* CLASS III SURFACE PREPARATION	* CLASS AA CONCRETE	HYDRO-DEMOLITION OF BRIDGE DECK	LATEX MODIFIED CONCRETE-VERY EARLY STRENGTH	PLACING & FINISHING LATEX MODIFIED CONCRETE - VERY EARLY STRENGTH	EVAZOTE JOINT SEALS	GROOVING BRIDGE FLOORS	ASPHALT CONCRETE SURFACE COURSE TYPE SF 9.5A
SQ.YDS.	SQ.YDS.	SQ.YDS.	SQ.YDS.	C.Y.	SQ.YDS.	C.Y.	SQ.YDS.	LUMP SUM	SQ. FT.	TONS
3142	1953	877	0	0	2831	197	2830	LUMP SUM	23,244	17

* QUANTITY SHOWN IS FOR INFORMATION ONLY.
* INCLUDES APPROACH MILLING.

DRAWN BY : S. T. SANDOR DATE : FEB./2010
CHECKED BY : A. ASTER DATE : FEB./2010

*****SYTIME*****

*****USERNAME*****

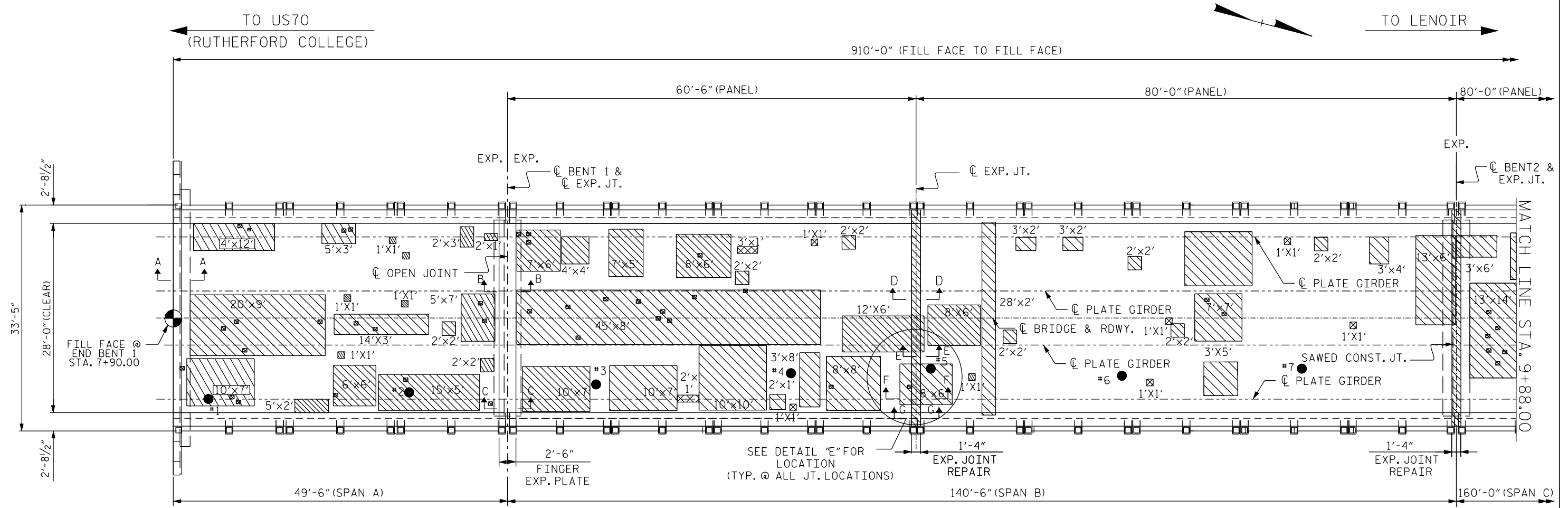
*****\$DGN*****

PROJECT NO. BK-5101F
COUNTY: BURKE
STATION: N/A
BRIDGE NO. 10

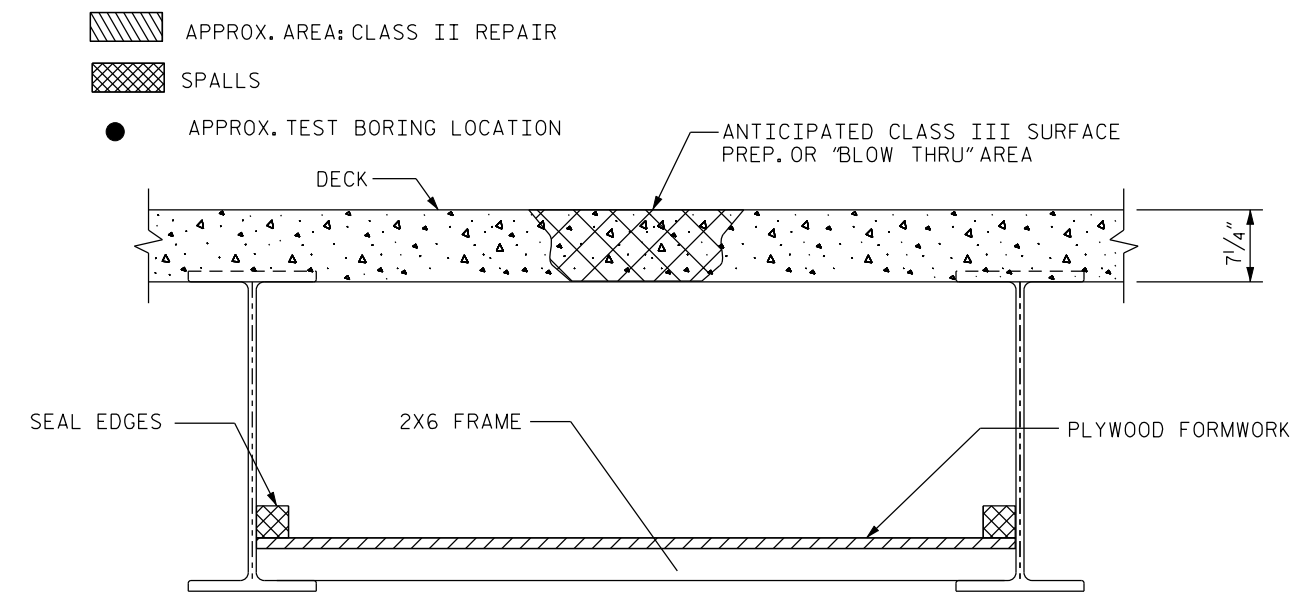
STATE OF NORTH CAROLINA
DEPARTMENT OF TRANSPORTATION
RALEIGH

TYPICAL SECTIONS OF
BRIDGE No. 10 ON
SR 1001 OVER
CATAWBA RIVER

REVISIONS						SHEET NO.
NO.	BY	DATE	NO.	BY	DATE	2
1			3			TOTAL SHEETS 8
2			4			



PLAN VIEW OF BRIDGE

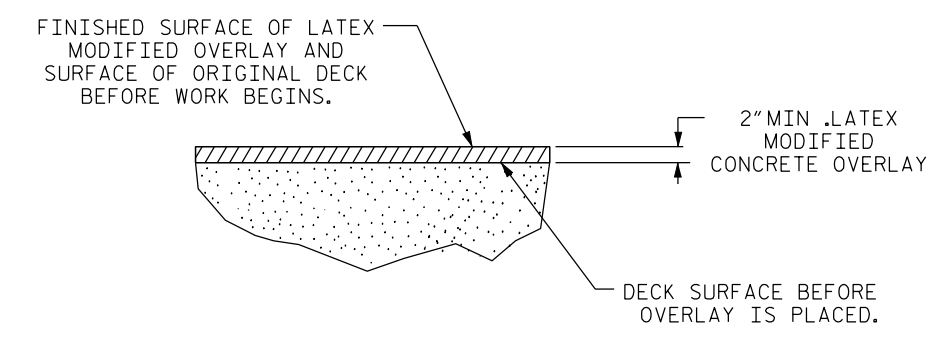


TYP. "BLOW THRU" CONTAINMENT AND FORMWORK

A METHOD TO CAPTURE WATER AND DEBRIS FROM BLOW THRU DURING HYDRO-DEMOLITION SHALL BE INSTALLED IN AREAS INDICATED AS CLASS III SURFACE PREPARATION.

SUBMIT DETAILS OF PROPOSED FORMWORK FOR APPROVAL PRIOR TO BEGINNING WORK.

COST FOR INSTALLING AND REMOVING FORMWORK SHALL BE INCIDENTAL TO THE PRICE PER SQ. YARD OF HYDRO-DEMOLITION.

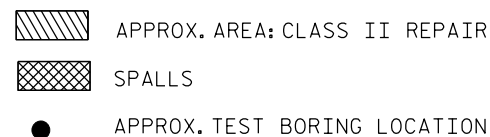


DETAIL FOR LATEX MODIFIED CONCRETE OVERLAY

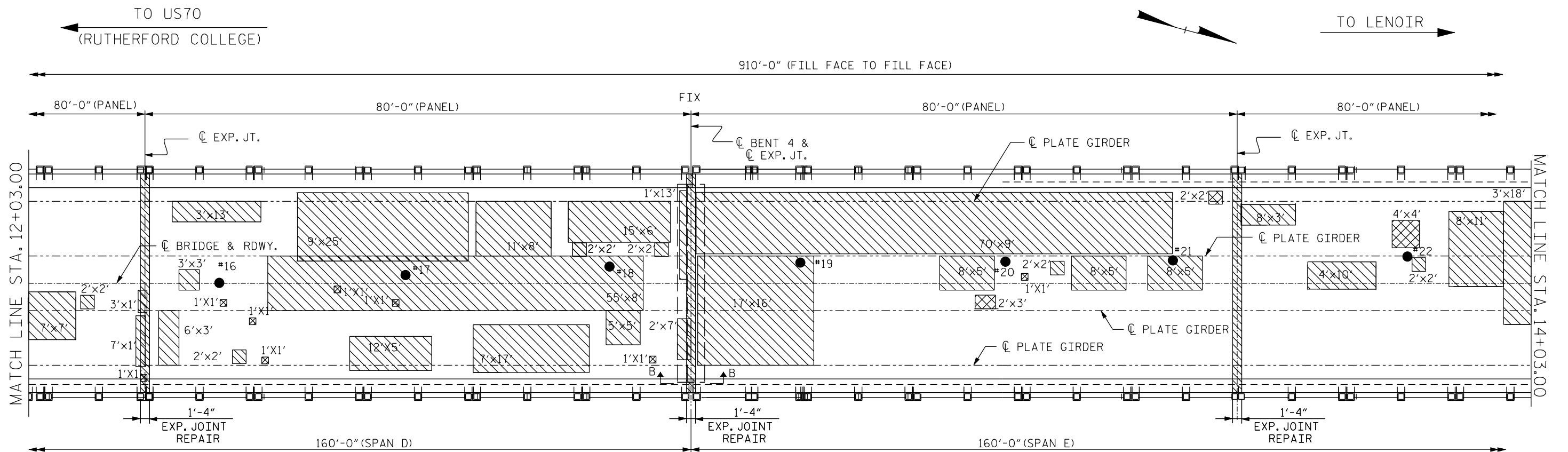
PROJECT NO. BK-5101F
COUNTY: BURKE
STATION: N/A
DECK REHAB BRIDGE NO. 10

STATE OF NORTH CAROLINA DEPARTMENT OF TRANSPORTATION RALEIGH						SHEET NO.
PLAN VIEW OF BRIDGE #10 ON SR 1001 OVER CATAWBA RIVER 28'-0" CLEAR ROADWAY (90°-00' SKEW)						3
REVISIONS						TOTAL SHEETS
NO.	BY	DATE	NO.	BY	DATE	8
1			3			
2			4			

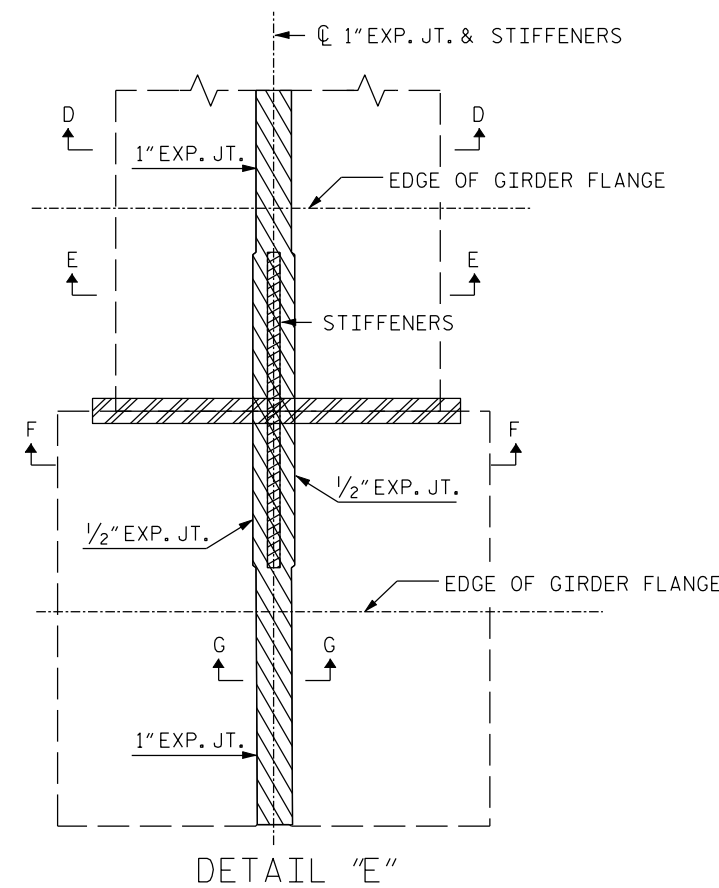
DRAWN BY : S. T. SANDOR DATE : FEB./2010
CHECKED BY : A. ABRAHA DATE : FEB./2010



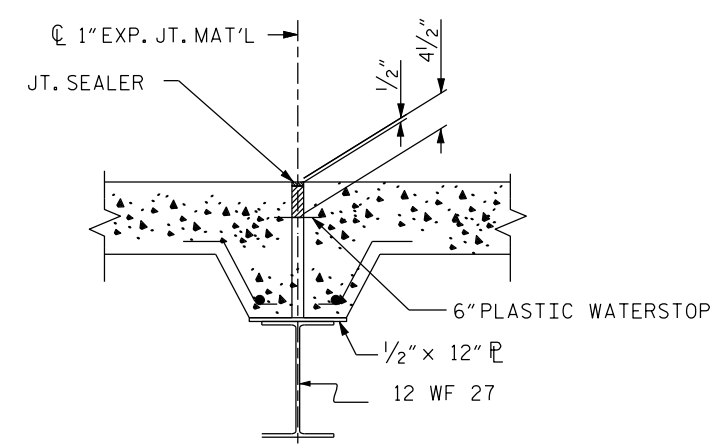
REVISIONS						SHEET NO.
NO.	BY	DATE	NO.	BY	DATE	4
1			3			TOTAL SHEETS
2			4			8



PLAN VIEW OF BRIDGE



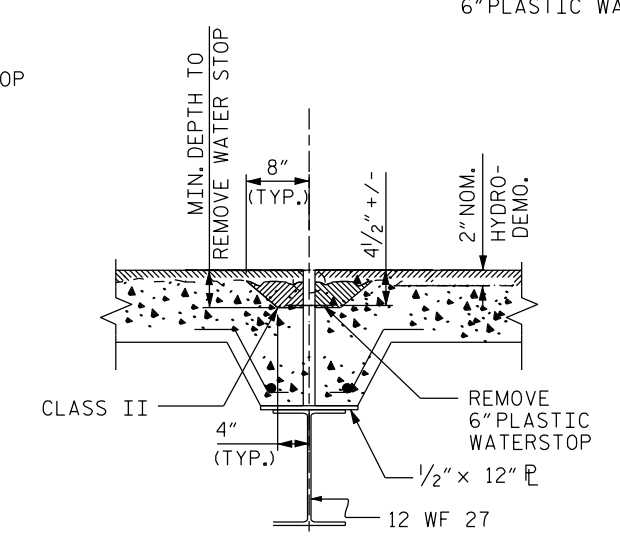
DETAIL "E"



SECTION D-D
(EXISTING JOINT) *

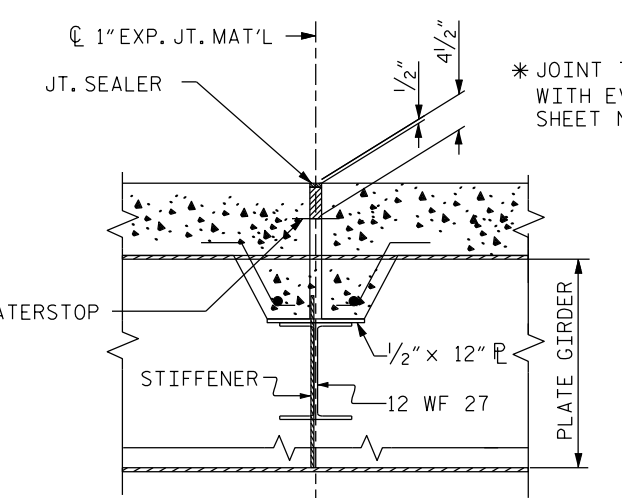
* JOINT TO BE REPLACED WITH EVAZOTE JT. SEE SHEET NO. S-7 FOR DETAIL.

- APPROX. AREA: CLASS II REPAIR
- SPALLS
- APPROX. TEST BORING LOCATION



MINIMUM EXISTING JOINT DEMOLITION
(FOR SECTION D-D & SECTION F-F)

NOTE: RETAIN ALL EXISTING REINF. STEEL. CLEAN AND REPAIR AS REQ'D.



SECTION D-D
(EXISTING JOINT) *

* JOINT TO BE REPLACED WITH EVAZOTE JT. SEE SHEET NO. S-7 FOR DETAIL.

PROJECT NO. BK-5101F
 COUNTY: BURKE
 STATION: N/A
 DECK REHAB BRIDGE NO. 10

STATE OF NORTH CAROLINA DEPARTMENT OF TRANSPORTATION RALEIGH						SHEET NO.
PLAN VIEW OF BRIDGE & JOINT DETAIL						5
28'-0" CLEAR ROADWAY (90°-00' SKEW)						TOTAL SHEETS
REVISIONS						8
NO.	BY	DATE	NO.	BY	DATE	
1			3			
2			4			

DRAWN BY : S. T. SANDOR
 CHECKED BY : A. ABRAHA
 DATE : FEB./2010
 DATE : FEB./2010

TO US70
(RUTHERFORD COLLEGE)

TO LENOIR

910'-0" (FILL FACE TO FILL FACE)

80'-0" (PANEL)

80'-0" (PANEL)

60'-6" (PANEL)

MATCH LINE STA. 14+03.00

MATCH LINE STA. 16+38.50

EXP.

CL BENT 5 &
CL EXP. JT.

CL EXP. JT.

CL BENT 6 &
CL EXP. JT.

EXP.

EXP.

4'x6'

2'x2'

2'x2'

1'x1'

3'x5'

#26

10'x8'

9'x26'

#27

#28

9'x5'

#29

5'x3'

#30

5'x3'

2'x2'

2'x2'

2'x2'

2'x2'

2'x2'

10'x11'

8'x32'

8'x3'

2'x2'

5'x3'

5'x3'

6'x4'

7'x4'

2'x2'

2'x2'

2'x2'

1'x1'

1'x1'

3'x2'

3'x2'

5'x10'

8'x6'

8'x10'

2'x2'

3'x3'

6'x4'

7'x4'

2'x2'

2'x2'

2'x2'

1'x1'

1'x1'

3'x2'

3'x2'

5'x10'

8'x6'

8'x10'

2'x2'

3'x3'

6'x4'

7'x4'

2'x2'

2'x2'

2'x2'

1'x1'

1'x1'

3'x2'

3'x2'

5'x10'

8'x6'

8'x10'

2'x2'

3'x3'

6'x4'

7'x4'

2'x2'

2'x2'

2'x2'

1'x1'

1'x1'

3'x2'

3'x2'

5'x10'

8'x6'

8'x10'

2'x2'

3'x3'

160'-0" (SPAN E)

140'-6" (SPAN F)

49'-6" (SPAN G)

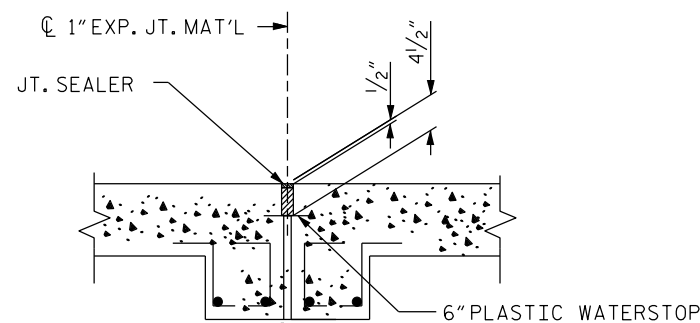
1'-4"
EXP. JOINT
REPAIR

1'-4"
EXP. JOINT
REPAIR

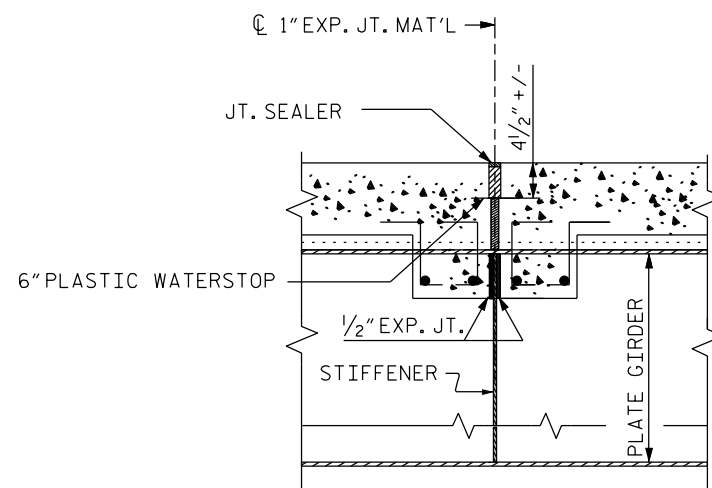
2'-6"
FINGER
EXP. PLATE

PLAN VIEW OF BRIDGE

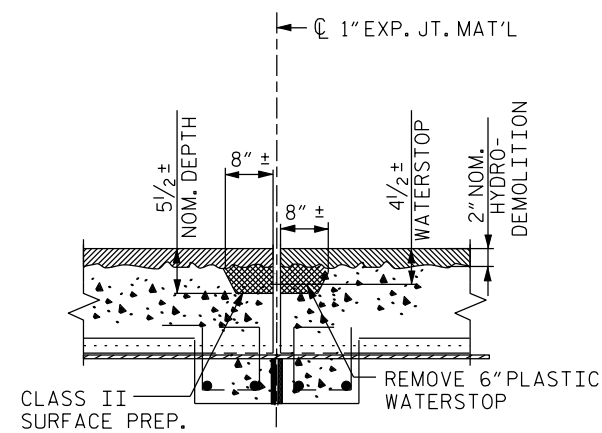
- APPROX. AREA: CLASS II REPAIR
- SPALLS
- APPROX. TEST BORING LOCATION



SECTION G-G
(EXISTING JOINT) *



SECTION F-F
(EXISTING JOINT) *



MINIMUM EXISTING JOINT DEMOLITION
(FOR SECTION F-F & SECTION G-G)

NOTE: RETAIN ALL EXISTING REINF.
STEEL. CLEAN AND REPAIR AS REQ'D.

* JOINT TO BE REPLACED WITH EVAZOTE JT.
SEE SHEET NO. S-7 FOR DETAIL.

PROJECT NO. BK-5101F
COUNTY: BURKE
STATION: N/A
DECK REHAB BRIDGE NO. 10

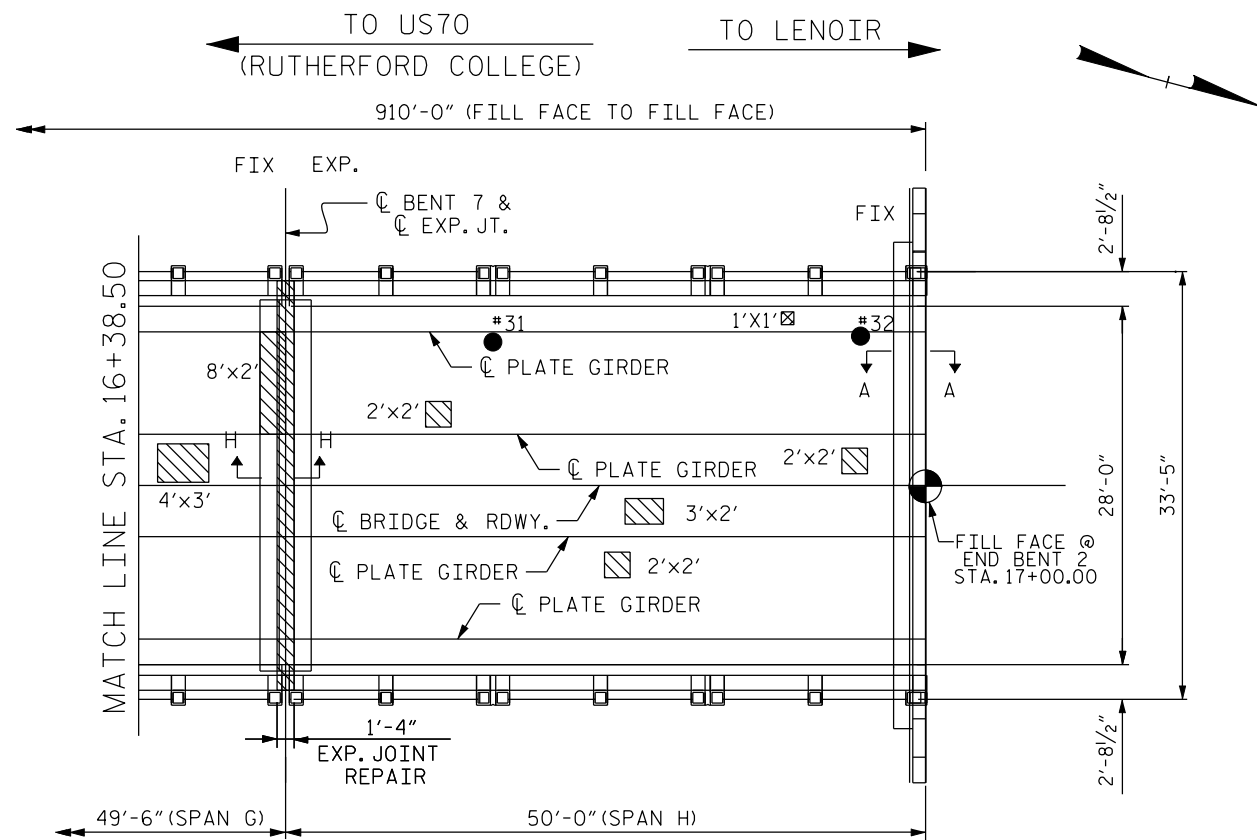
STATE OF NORTH CAROLINA
DEPARTMENT OF TRANSPORTATION
RALEIGH

PLAN VIEW OF BRIDGE
& JOINT DETAIL
28'-0" CLEAR ROADWAY (90°-00' SKEW)

REVISIONS						SHEET NO.
NO.	BY	DATE	NO.	BY	DATE	6
1			3			TOTAL SHEETS 8
2			4			

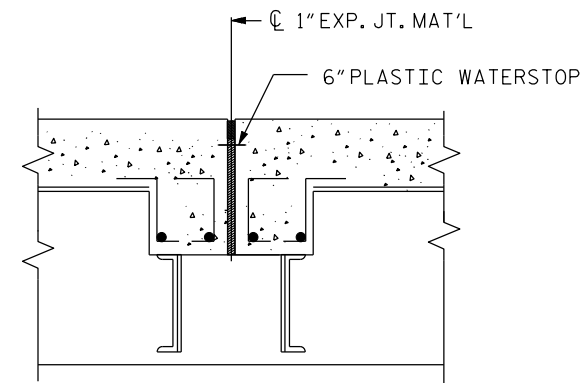
DRAWN BY : S. T. SANDOR
CHECKED BY : A. ABRAHA
DATE : FEB./2010
DATE : FEB./2010

\$\$\$\$\$SYTIME\$\$\$\$\$ \$\$\$USERNAME\$\$\$\$\$ \$\$\$\$\$\$DGN\$\$\$\$\$\$\$\$\$\$\$\$\$

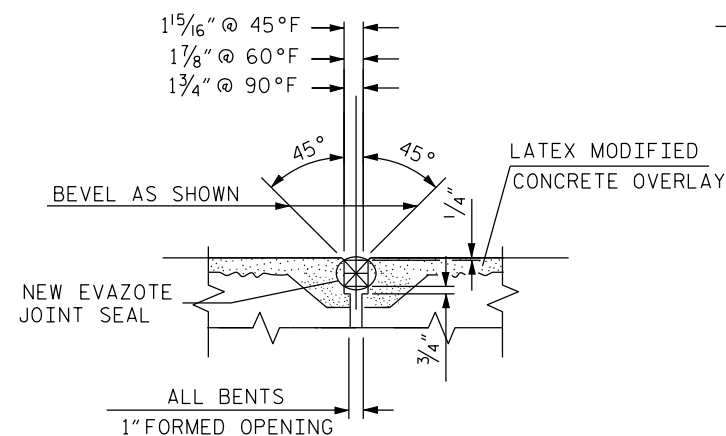


PLAN VIEW OF BRIDGE

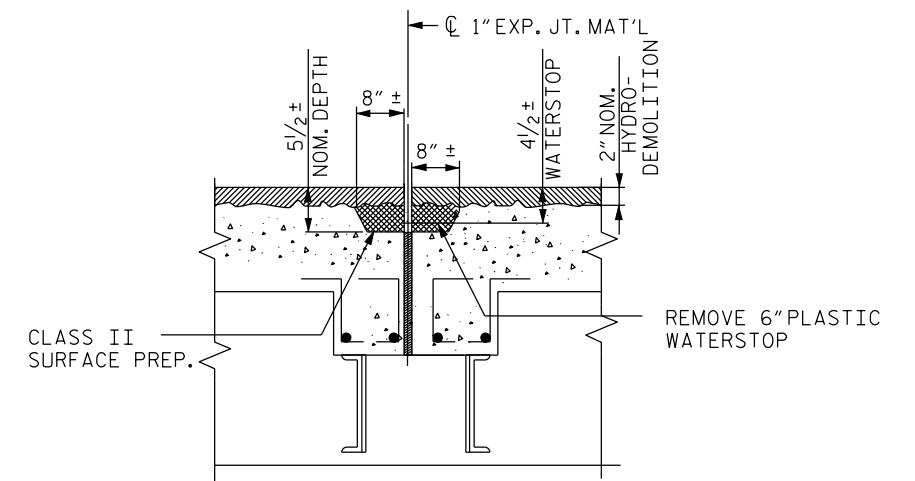
- APPROX. AREA: CLASS II REPAIR
- SPALLS
- APPROX. TEST BORING LOCATION



SECTION H-H
(EXISTING BENT #7)

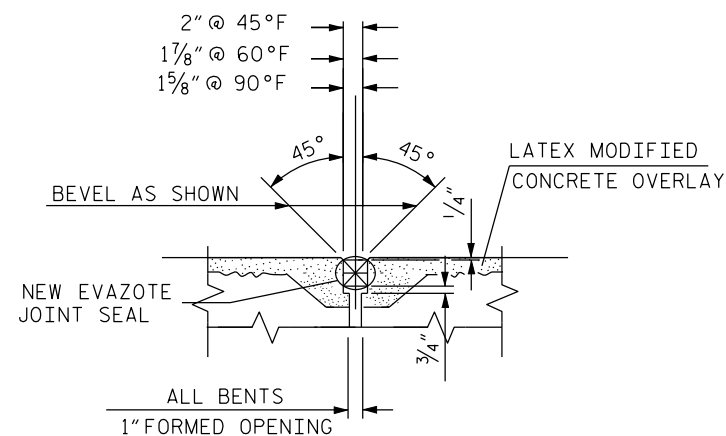


SECTION H-H
(PROPOSED EVAZOTE JT. SEAL)
(BENT NO. 7)

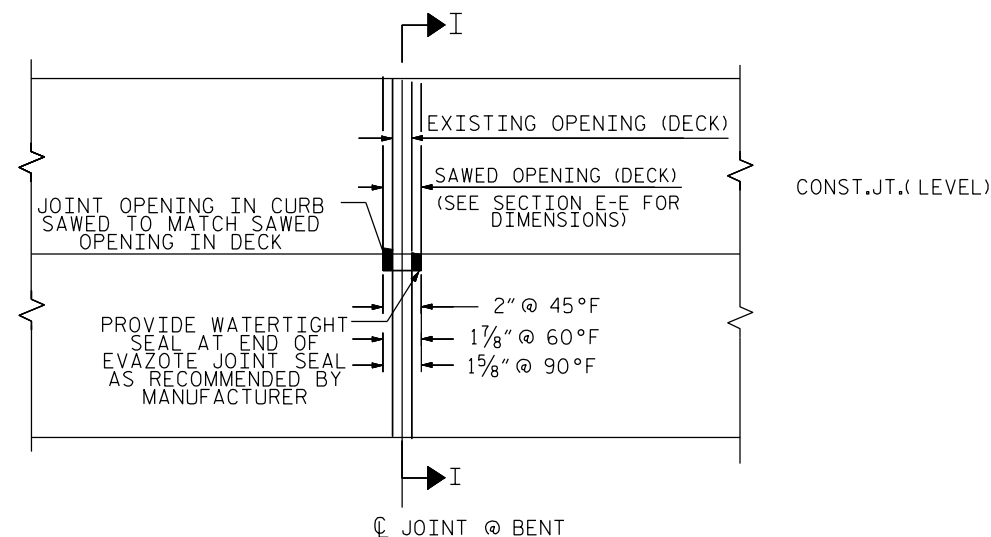


MINIMUM EXISTING JOINT DEMOLITION
(FOR SECTION H-H)
(BENT NO. 7)

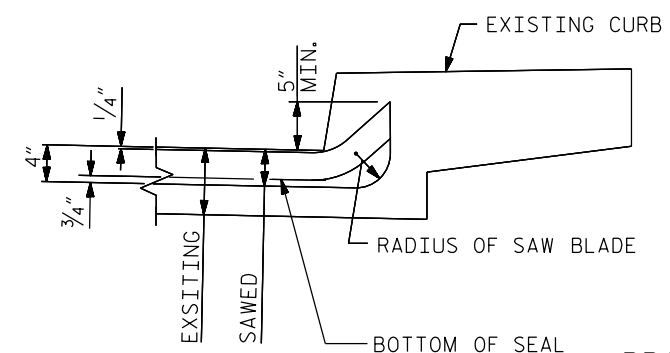
NOTE: RETAIN ALL EXISTING REINF. STEEL. CLEAN AND REPAIR AS REQ'D.



PROPOSED EVAZOTE JT. SEAL



PLAN



SECTION I-I

PROJECT NO. BK-5101F
COUNTY: BURKE
STATION: N/A
DECK REHAB BRIDGE NO. 10

STATE OF NORTH CAROLINA
DEPARTMENT OF TRANSPORTATION
RALEIGH

PLAN VIEW OF BRIDGE
& JOINT DETAIL
28'-0" CLEAR ROADWAY (90°-00' SKEW)

REVISIONS						SHEET NO.
NO.	BY	DATE	NO.	BY	DATE	7
1			3			TOTAL SHEETS 8
2			4			

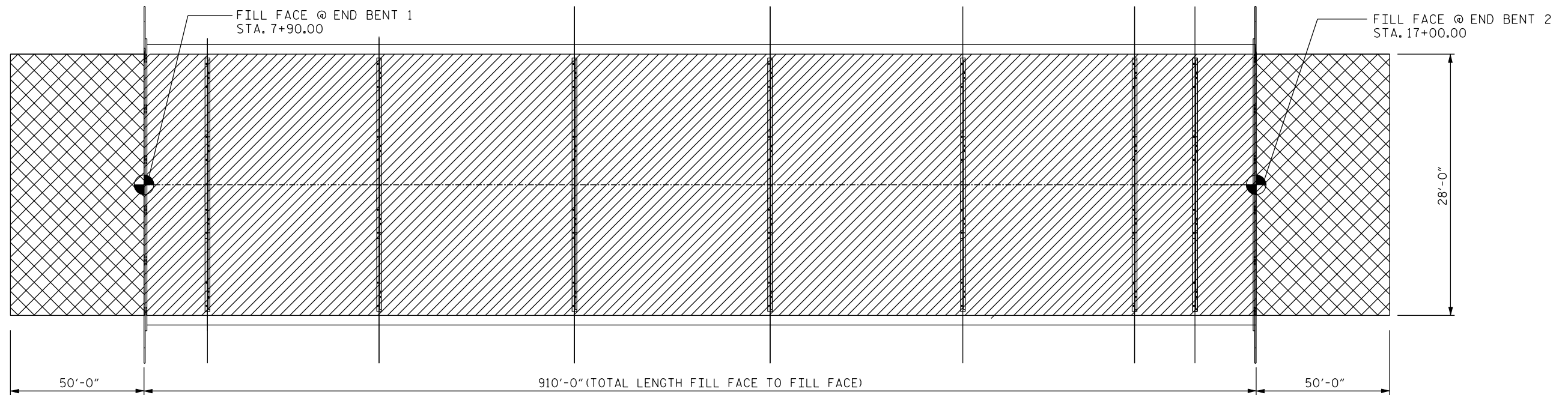
DRAWN BY : S. T. SANDOR DATE : FEB./2010
CHECKED BY : A. ABRAHA DATE : FEB./2010

*****SYSTEM*****

*****USERNAME*****



*****DGN*****

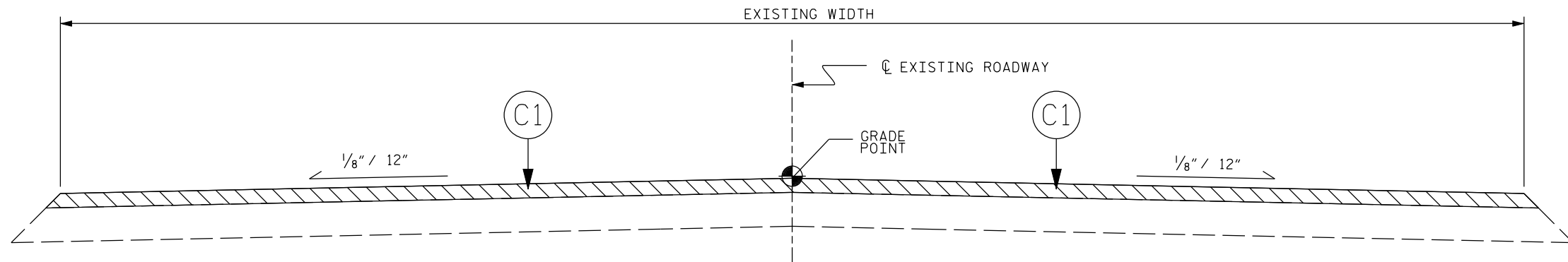
EVAZOTE JOINT SEAL DETAILS
(FOR ALL JT. SECTIONS)



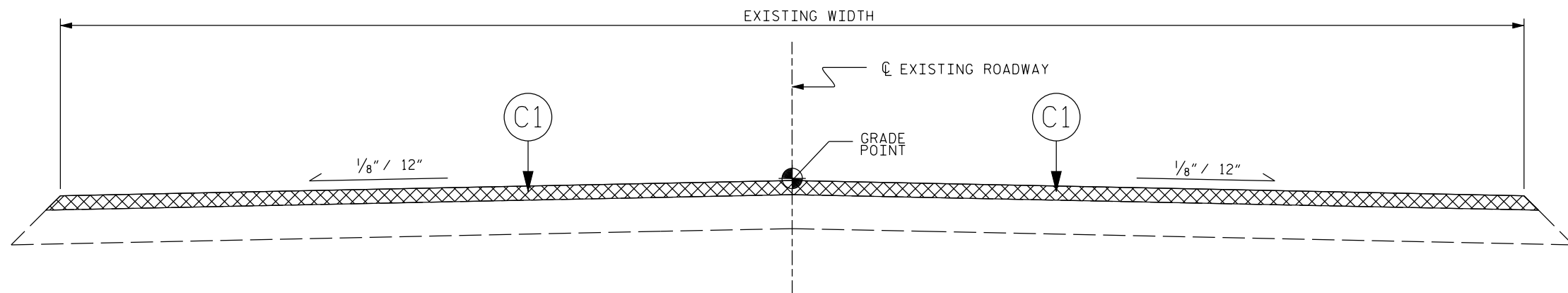
C1
PROPOSED APPROX. 2" MIN. ASPHALT CONCRETE SURFACE COURSE, TYPE SF9.5A, AT AN AVERAGE RATE OF 110 LBS. PER SQ. YD. PER 1" DEPTH TO BE PLACED IN LAYERS NOT LESS THAN 1" IN DEPTH OR GREATER THAN 1 1/2" IN DEPTH

PLAN

 DECK SCARICATION AND HYDRODEMOLITION
 APPROACH MILLING



TYPICAL ROADWAY SECTION



TYPICAL ROADWAY MILLING SECTION

(MILL TO 2" DEPTH)

PROJECT NO. BK-5101F
COUNTY: BURKE
STATION: N/A
DECK REHAB BRIDGE NO. 10

STATE OF NORTH CAROLINA
DEPARTMENT OF TRANSPORTATION
RALEIGH

TYPICAL ROADWAY SECTION
AND MILLING DETAILS
28'-0" CLEAR ROADWAY-(90°-00' SKEW)

REVISIONS						SHEET NO.
NO.	BY	DATE	NO.	BY	DATE	8
1			3			TOTAL SHEETS 8
2			4			

DRAWN BY : S. T. SANDOR
CHECKED BY : A. ABRAHA
DATE : FEB./2010
DATE : FEB./2010

*****SYSTEM*****

*****USERNAME*****

*****DGN*****

3/9/2010 10:41:41 AM C:\projects\bk-5101f\bk-5101f\plan sheets\bk-5101f-tcp.psh.dgn

TIP PROJECT: BK-5101F

WBS 42579.3.6

STATE OF NORTH CAROLINA
DIVISION OF HIGHWAYS

PLAN FOR PROPOSED
TRAFFIC CONTROL

BURKE COUNTY

LOCATION: BRIDGE NO.10 SR 1001 MALCOLM BLVD. OVER LAKE RHODHISS-CATAWBA RIVER
TYPE OF WORK: TRAFFIC CONTROL FOR DECK PRESERVATION

ROADWAY STANDARD DRAWINGS

THE FOLLOWING ROADWAY STANDARDS AS APPEAR IN "ROADWAY STANDARD DRAWINGS" -
PROJECT SERVICES UNIT - N.C. DEPARTMENT OF TRANSPORTATION - RALEIGH, N.C.,
DATED JULY 2006 ARE APPLICABLE TO THIS PROJECT AND BY REFERENCE HEREBY ARE
CONSIDERED A PART OF THESE PLANS:

STD. NO.	TITLE
1101.02	TEMPORARY LANE CLOSURES
1101.03	TEMPORARY ROAD CLOSURES
1101.04	TEMPORARY SHOULDER CLOSURES
1101.11	TRAFFIC CONTROL DESIGN TABLES
1110.01	STATIONARY WORK ZONE SIGNS
1110.02	PORTABLE WORK ZONE SIGNS
1130.01	DRUMS
1135.01	CONES
1145.01	BARRICADES
1150.01	FLAGGING DEVICES
1180.01	SKINNY DRUMS
1205.01	PAVEMENT MARKINGS - LINE TYPES & OFFSETS
1205.02	PAVEMENT MARKINGS - 2 LANE & MULTILANE ROADWAYS

INDEX OF SHEETS

SHEET NO.	TITLE
TCP-1	LIST OF APPLICABLE ROADWAY STANDARD DRAWINGS, LEGEND, AND INDEX OF SHEETS
TCP-2	GENERAL NOTES
TCP-3	TRAFFIC CONTROL PHASING-ROAD CLOSURE
TCP-4	OFFSITE DETOUR ROUTE

STATE PROJECT REFERENCE NO.

BK-5101F

SHEET NO.

TCP-1

LEGEND

GENERAL

- ← DIRECTION OF TRAFFIC FLOW
↑ NORTH ARROW
■ WORK AREA

TRAFFIC CONTROL DEVICES

- ▬ TYPE III BARRICADE
▲ CONE
● DRUM ◎ SKINNY DRUM
⚡ FLASHING ARROW PANEL (TYPE C)
⊥ STATIONARY SIGN
⚡ PORTABLE SIGN
⊖ STATIONARY OR PORTABLE SIGN
◀ CHANGEABLE MESSAGE SIGN
~ TEMPORARY CRASH CUSHION
🚚 TRUCK MOUNTED IMPACT ATTENUATOR (TMIA)
🚔 LAW ENFORCEMENT
🚧 FLAGGER

APPROVED

DATE: 3/9/10



PLAN PREPARED BY:



Stantec Consulting Services Inc.
801 Jones Franklin Road
Suite 300
Raleigh, NC 27606
Tel. (919) 851-6866
Fax. (919) 851-7024
www.stantec.com
License No. F-0572

BETSY L. WATSON, PE

TRAFFIC CONTROL ENGINEER

GEORGE KARAGEORGE

TRAFFIC CONTROL DESIGNER

GENERAL NOTES

CHANGES MAY BE REQUIRED WHEN PHYSICAL DIMENSIONS IN THE DETAIL DRAWINGS, STANDARD DETAILS, AND ROADWAY DETAILS ARE NOT ATTAINABLE TO MEET FIELD CONDITIONS OR RESULT IN DUPLICATE OR UNDESIRED OVERLAPPING OF DEVICES. MODIFICATION MAY INCLUDE: MOVING, SUPPLEMENTING, COVERING, OR REMOVAL OF DEVICES AS DIRECTED BY THE ENGINEER.

THE FOLLOWING GENERAL NOTES APPLY AT ALL TIMES FOR THE DURATION OF THE CONSTRUCTION PROJECT EXCEPT WHEN OTHERWISE NOTED IN THE PLAN OR DIRECTED BY THE ENGINEER.

TIME RESTRICTIONS

A) DO NOT CLOSE OR NARROW TRAVEL LANES AS FOLLOWS:

ROAD NAME	DAY AND TIME RESTRICTIONS
SR 1001	6:00 A.M.-9:00 A.M. MONDAY THROUGH THURSDAY AND 3:00 P.M.-7:00 P.M. MONDAY THROUGH THURSDAY AND 6:00 A.M. FRIDAY THROUGH 7:00 P.M. SUNDAY

B) DO NOT CLOSE ROADS AS FOLLOWS:

ROAD NAME	DAY AND TIME RESTRICTIONS
SR 1001	6:00 A.M.-7:00 P.M. MONDAY THRU THURSDAY (DAILY) 6:00 A.M. FRIDAY THRU 7:00 P.M. THE FOLLOWING SUNDAY

C) DO NOT CLOSE OR NARROW TRAVEL LANES OR CLOSE A ROAD DURING HOLIDAYS AND SPECIAL EVENTS AS FOLLOWS:

ROAD NAME
SR 1001

HOLIDAY

- FOR ANY UNEXPECTED OCCURRENCE THAT CREATES UNUSUALLY HIGH TRAFFIC VOLUMES, AS DIRECTED BY THE ENGINEER.
- FOR NEW YEAR'S, BETWEEN THE HOURS OF 7:00 P.M. DECEMBER 31st TO 6:00 A.M. JANUARY 2nd. IF NEW YEAR'S DAY IS ON A FRIDAY, SATURDAY, SUNDAY, OR MONDAY THEN UNTIL 6:00 A.M. THE FOLLOWING TUESDAY.
- FOR EASTER, BETWEEN THE HOURS OF 7:00 P.M. THURSDAY AND 6:00 A.M. MONDAY.
- FOR MEMORIAL DAY, BETWEEN THE HOURS OF 7:00 P.M. FRIDAY TO 6:00 A.M. TUESDAY.
- FOR INDEPENDENCE DAY, BETWEEN THE HOURS OF 7:00 P.M. THE DAY BEFORE INDEPENDENCE DAY AND 6:00 A.M. THE DAY AFTER INDEPENDENCE DAY. IF INDEPENDENCE DAY IS ON A FRIDAY, SATURDAY, SUNDAY OR MONDAY; THEN BETWEEN THE HOURS OF 7:00 P.M. THE THURSDAY BEFORE INDEPENDENCE DAY AND 6:00 A.M. THE TUESDAY AFTER INDEPENDENCE DAY.
- FOR LABOR DAY, BETWEEN THE HOURS OF 7:00 P.M. FRIDAY AND 6:00 A.M. TUESDAY.
- FOR THANKSGIVING DAY, BETWEEN THE HOURS OF 7:00 P.M. TUESDAY TO 6:00 A.M. MONDAY.
- FOR CHRISTMAS, BETWEEN THE HOURS OF 7:00 P.M. THE FRIDAY BEFORE THE WEEK OF CHRISTMAS DAY AND 6:00 A.M. THE FOLLOWING TUESDAY AFTER THE WEEK OF CHRISTMAS.

LANE AND SHOULDER CLOSURE REQUIREMENTS

- D) REMOVE LANE CLOSURE DEVICES FROM THE LANE WHEN WORK IS NOT BEING PERFORMED BEHIND THE LANE CLOSURE OR WHEN A LANE CLOSURE IS NO LONGER NEEDED, OR AS DIRECTED BY THE ENGINEER.
- E) WHEN PERSONNEL AND/OR EQUIPMENT ARE WORKING WITHIN 15 FT OF AN OPEN TRAVEL LANE, CLOSE THE NEAREST OPEN SHOULDER USING ROADWAY STANDARD DRAWING NO. 1101.04 UNLESS THE WORK AREA IS PROTECTED BY BARRIER OR GUARDRAIL OR A LANE CLOSURE IS INSTALLED.
- F) WHEN PERSONNEL AND/OR EQUIPMENT ARE WORKING ON THE SHOULDER ADJACENT TO AN UNDIVIDED FACILITY AND WITHIN 5 FT OF AN OPEN TRAVEL LANE, CLOSE THE NEAREST OPEN TRAVEL LANE USING ROADWAY STANDARD DRAWING NO. 1101.02 UNLESS THE WORK AREA IS PROTECTED BY BARRIER OR GUARDRAIL.

WHEN PERSONNEL AND/OR EQUIPMENT ARE WORKING ON THE SHOULDER ADJACENT TO A DIVIDED FACILITY AND WITHIN 10 FT OF AN OPEN TRAVEL LANE, CLOSE THE NEAREST OPEN TRAVEL LANE USING ROADWAY STANDARD DRAWING NO. 1101.02 UNLESS THE WORK AREA IS PROTECTED BY BARRIER OR GUARDRAIL.

- G) WHEN PERSONNEL AND/OR EQUIPMENT ARE WORKING WITHIN A LANE OF TRAVEL, CLOSE THE LANE ACCORDING TO THE TRAFFIC CONTROL PLANS, ROADWAY STANDARD DRAWINGS OR AS DIRECTED BY THE ENGINEER. CONDUCT THE WORK SO THAT ALL PERSONNEL AND/OR EQUIPMENT REMAIN WITHIN THE CLOSED TRAVEL LANE.

TRAFFIC PATTERN ALTERATIONS

- H) NOTIFY THE ENGINEER TWENTY ONE (21) CALENDAR DAYS PRIOR TO ANY TRAFFIC PATTERN ALTERATION.

SIGNING

- I) FURNISH AND INSTALL SIGNING AND DEVICES REQUIRED TO CLOSE THE ROAD AS SHOWN IN THE TRAFFIC CONTROL PLAN.
- J) FURNISH AND INSTALL SIGNING REQUIRED FOR THE OFF-SITE DETOUR ROUTE.
- K) COVER OR REMOVE ALL SIGNS AND DEVICES REQUIRED TO CLOSE THE ROAD WHEN ROAD CLOSURE IS NOT IN OPERATION.
- L) OFFSITE DETOUR SIGNS ARE NOT REQUIRED TO BE COVERED ON A DAILY BASIS, UNLESS OTHERWISE DIRECTED BY THE ENGINEER.
- M) ENSURE ALL NECESSARY SIGNING IS IN PLACE PRIOR TO ALTERING ANY TRAFFIC PATTERN.

TRAFFIC CONTROL DEVICES

- N) PLACE TYPE III BARRICADES, WITH "ROAD CLOSED" SIGN R11-2 ATTACHED, OF SUFFICIENT LENGTH TO CLOSE ENTIRE ROADWAY.

PAVEMENT MARKINGS AND MARKERS


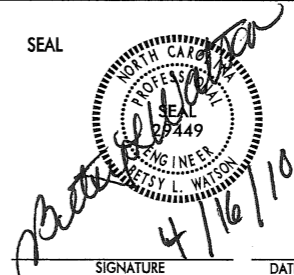



- O) REPLACE OBLITERATED EXISTING MARKINGS WITH PAINT MARKINGS BEFORE OPENING LANES TO TRAFFIC.
- P) UPON COMPLETION OF ALL OTHER CONSTRUCTION OPERATIONS INSTALL FINAL PAVEMENT MARKINGS ON THE FINAL SURFACE AS FOLLOWS:

ROAD NAME	MARKING	MARKER
SR 1001	POLYUREA	NONE

MISCELLANEOUS

- Q) ENSURE THE OVERSIZE/OVERWEIGHT PERMIT UNIT (919) 733-4740 HAS BEEN ADVISED OF THE ONGOING TRAFFIC OPERATIONS THROUGH THE DIVISION OFFICE.
- R) SUBMIT TO THE ENGINEER A WORK AREA QUICK CLEARANCE PLAN TO ALLOW ACCESS FOR EMERGENCY VEHICLES. CONDUCT ALL CONSTRUCTION OPERATIONS IN SUCH A MANNER AS TO ALLOW EMERGENCY VEHICLE PASSAGE THROUGH BRIDGE AT ALL TIMES.

4/16/2010
J:\Traffic\Control\BK-5101F TCP.psh_02.dgn
Division

 Stantec Consulting Services Inc. 801 Jones Franklin Road Suite 300 Raleigh, NC 27606 Tel. (919) 851-6866 Fax. (919) 851-7024 www.stantec.com License No. F-0672	<p>SEAL</p>  <p>SIGNATURE</p> <p>DATE</p>	<p>GENERAL NOTES</p> <table><tr><td>SCALE: NONE</td><td rowspan="5"></td><td>REVISIONS</td></tr><tr><td>DATE: MAR. 2010</td><td></td></tr><tr><td>DWG. BY: GK</td><td></td></tr><tr><td>DESIGN BY: GK</td><td></td></tr><tr><td>REVIEWED BY: BLW</td><td></td></tr></table> <p>CADD FILE</p>	SCALE: NONE		REVISIONS	DATE: MAR. 2010		DWG. BY: GK		DESIGN BY: GK		REVIEWED BY: BLW	
SCALE: NONE		REVISIONS											
DATE: MAR. 2010													
DWG. BY: GK													
DESIGN BY: GK													
REVIEWED BY: BLW													

MARK HAZARDS WITH DEVICES.

TEMPORARY ROAD CLOSURE IN ACCORDANCE WITH
ROADWAY STANDARD DRAWING 1101.03, SHEET 1 OF 9
CLOSURE BEYOND DETOUR POINT

MARINA

Diagram illustrating a Type III Barricade. The barricade is shown as a rectangular structure with diagonal black and white stripes. A sign attached to the barricade reads "ROAD CLOSED" and "48'x30'". The diagram is labeled "TYPE III BARRICADE" and "R11-2".

BRIDGE #10

CATAWBA RIVER

LAKE RHODHISS

TEMPORARY ROAD CLOSURE IN ACCORDANCE WITH
ROADWAY STANDARD DRAWING 1101.03, SHEET 1 OF 9
CLOSURE BEYOND DETOUR POINT

R11-2
48"X30"

ROAD
CLOSED

TYPE III BARRICADE



Stantec

Stantec Consulting Services Inc.
801 Jones Franklin Road
Suite 300
Raleigh, NC 27606
Tel. (919) 851-6866
Fax. (919) 851-7024
www.stantec.com
License No. F-0672

SEAL

SEAL

NORTH CAROLINA
PROFESSIONAL
ENGINEER
JERRY L. WATSON
09449

3/9/10

SIGNATURE

DATE

TRAFFIC CONTROL PHASING
BRIDGE #10
ROAD CLOSURE

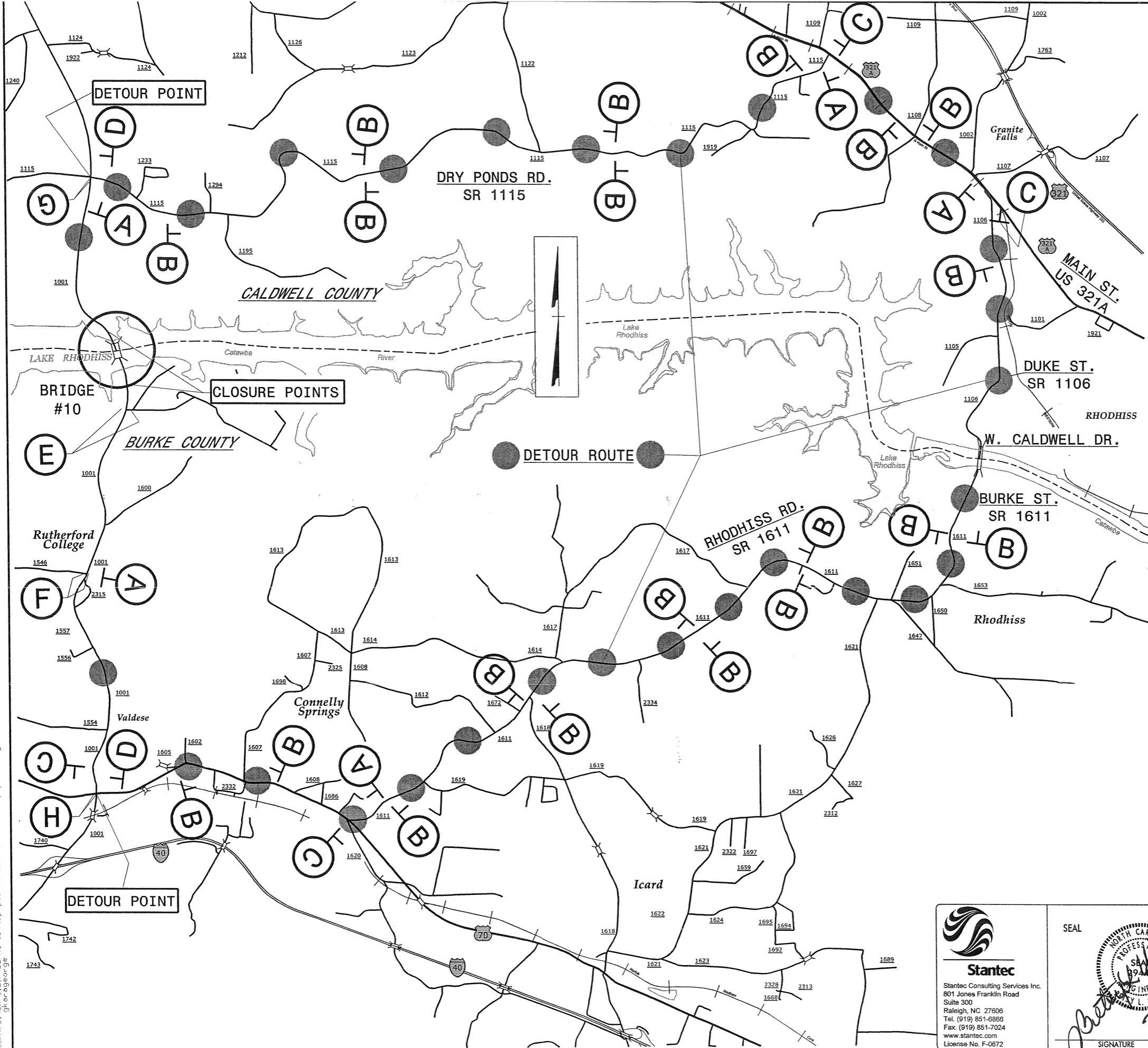
SCALE:	NONE
DATE:	MAR. 2010
DWG. BY:	GK
DESIGN BY:	GK
REVIEWED BY:	BLW

REVISIONS

DD	
----	--

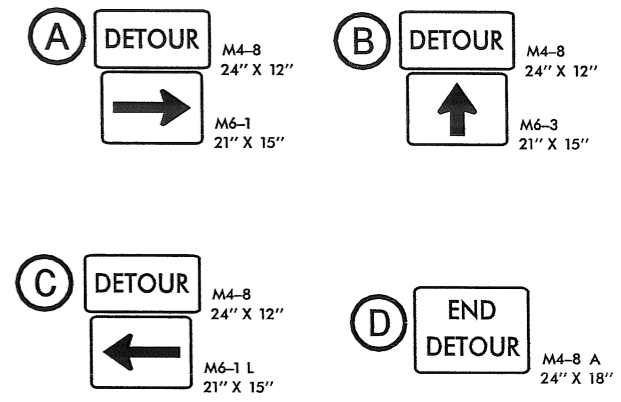
3/9/2010
control\bk-5101f_burke 10\tcp\plan sheets\BK-5101F_tcp-psh_03.dgn
garageorge

\\control\p\2000\Burke 10\top\plan sheets\BK-5101F-top.psh_04.dgn
3/9/2010 3:16:00 PM
George G

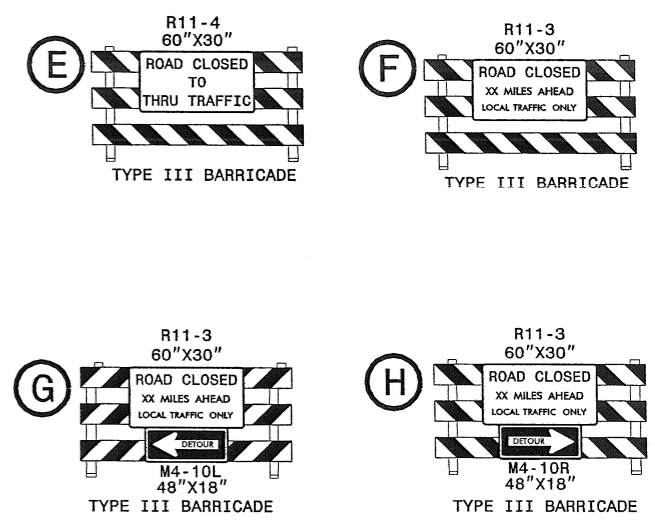


DETOUR ROUTE

DRY PONDS RD.
RIGHT ON US 321A (N. MAIN ST.)
RIGHT ON DUKE ST.
TURNS INTO
W. CALDWELL DR.
TURNS INTO
BURKE ST.
TURNS INTO
RHODHISS RD.
RIGHT ON US 70 WEST
RIGHT ON MALCOLM BLVD SR 1001 CONNELLY SPRINGS RD.
END DETOUR



WING BARRICADES USED FOR TRAFFIC BETWEEN THE
CLOSURE POINT AND DETOUR POINT. USE
ADDITIONAL IF NEEDED, AS DIRECTED BY THE
ENGINEER.



Stantec
Stantec Consulting Services Inc.
801 Jones Franklin Road
Suite 300
Raleigh, NC 27606
Tel. (919) 851-6868
Fax. (919) 851-7024
www.stantec.com
License No. F-0672

SEAL
NORTH CAROLINA
PROFESSIONAL
ENGINEER
SA 449
92449
L. WATSON
3/9/10
SIGNATURE
DATE

SR 1001 DETOUR ROUTE		REVISIONS	
SCALE: NONE	DATE: MAR. 2010	DESIGN BY: GK	REVIEWED BY: BLW
DESIGN BY: GK	REVIEWED BY: BLW	CADD FILE	