

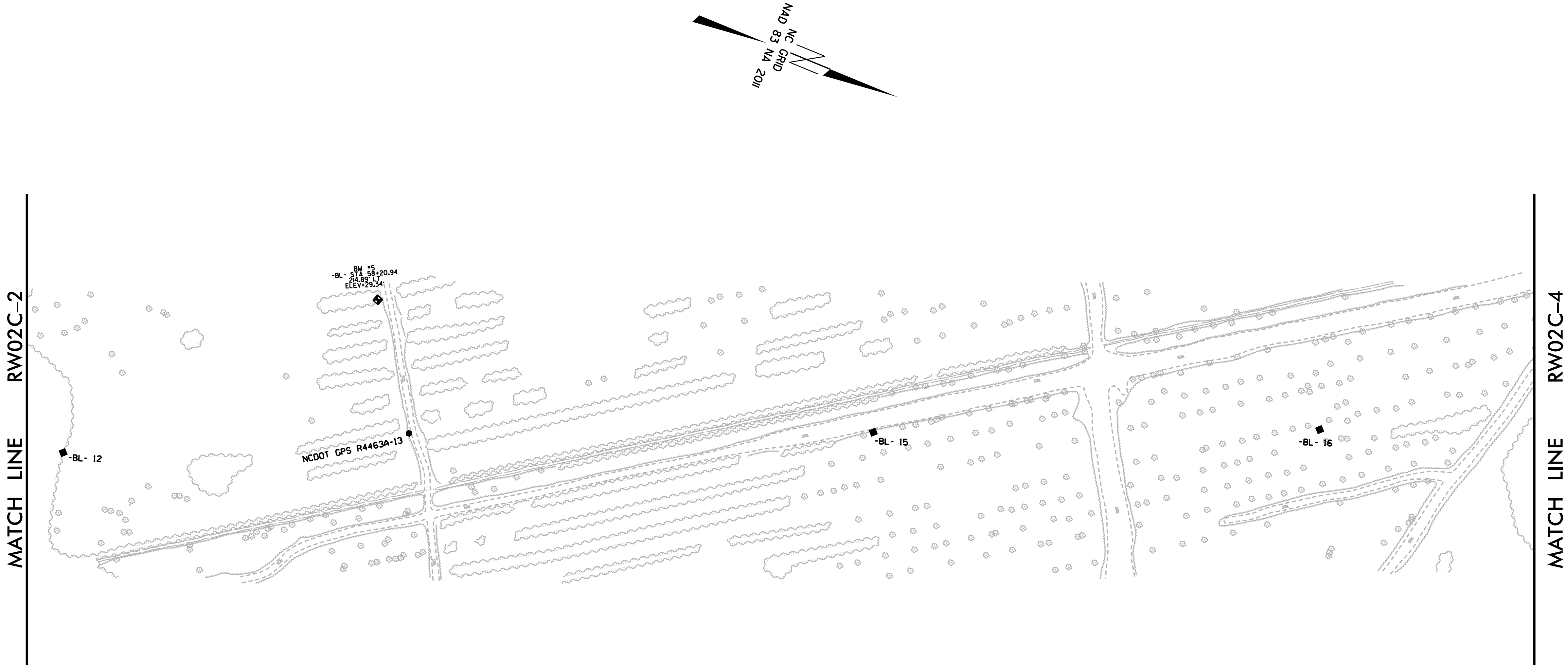
REVISIONS

I3-NOV-2018 15:47
N:\HURFAL\085\R4463A\Control Sheets\R4463A_1s-rw02c-3.dgn
morhodes1 AT LS-299767

6/2/99

SURVEY CONTROL SHEET R-4463A
W/ EXISTING CENTERLINE ALIGNMENTS PRIOR TO CONSTRUCTION

PROJECT REFERENCE NO.	SHEET NO.
R-4463A	RW02C-3
Location and Surveys	
DIVISION 2 LOCATION & SURVEYS	



- NOTES:**
- PROJECT CONTROL WAS ESTABLISHED USING GNSS, THE GLOBAL NAVIGATION SATELLITE SYSTEM.
 - THE SURVEY CONTROL DATA FOR THIS PROJECT HAS BEEN COMPILED FROM VARIOUS SOURCES. IF FURTHER INFORMATION REGARDING PROJECT CONTROL IS NEEDED, PLEASE CONTACT THE LOCATION AND SURVEYS UNIT.