

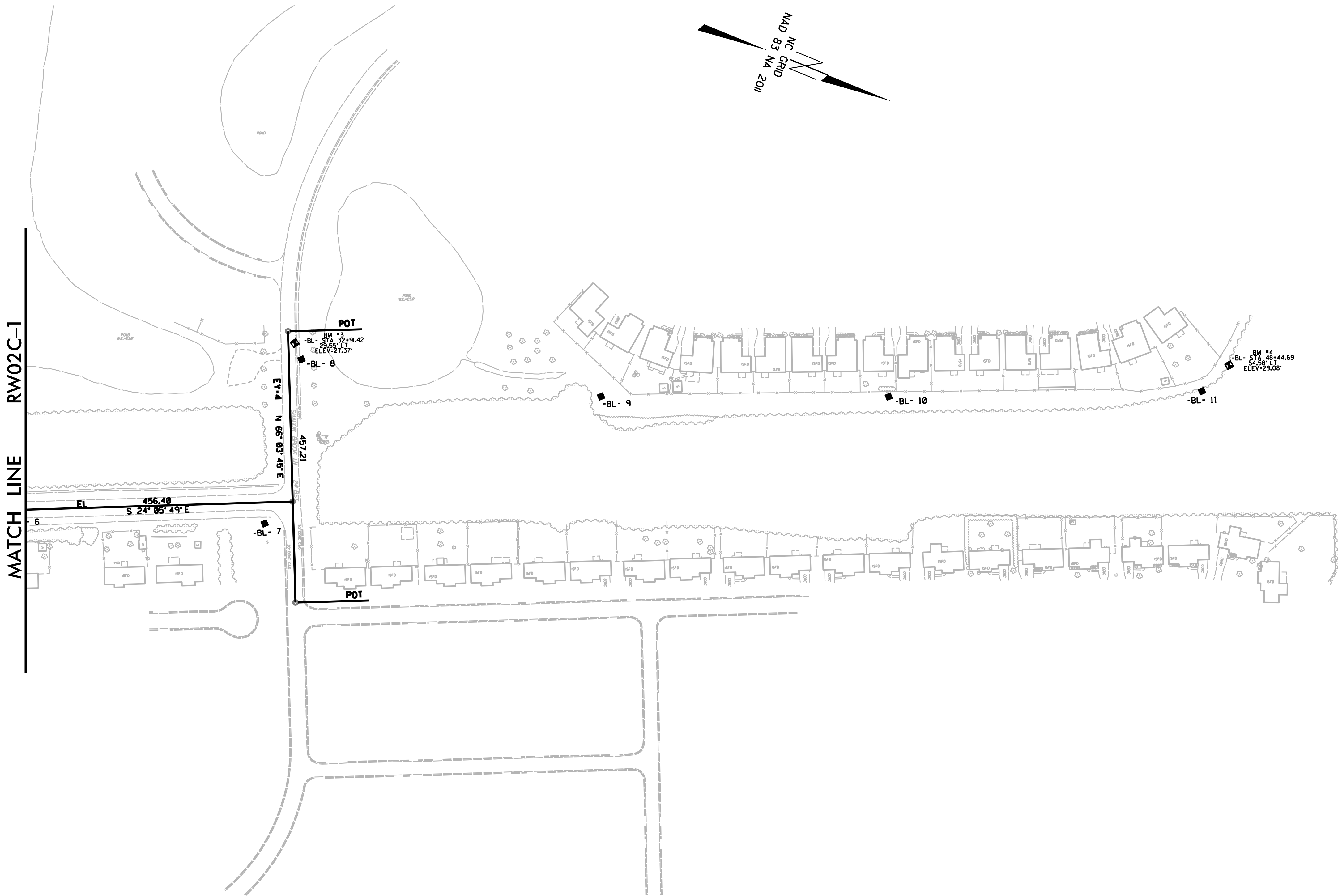
6/2/99

I3-NOV-2018 16:48
N:\HURAL\085\R4463A\Control Sheets\R4463A_1s-rw02c-2.dgn
morhodes1 AT LS-299767

REVISIONS

SURVEY CONTROL SHEET R-4463A
W/ EXISTING CENTERLINE ALIGNMENTS PRIOR TO CONSTRUCTION

PROJECT REFERENCE NO.	SHEET NO.
R-4463A	RW02C-2
Location and Surveys	
DIVISION 2 LOCATION & SURVEYS	



NOTES:

1. PROJECT CONTROL WAS ESTABLISHED USING GNSS, THE GLOBAL NAVIGATION SATELLITE SYSTEM.
2. THE SURVEY CONTROL DATA FOR THIS PROJECT HAS BEEN COMPILED FROM VARIOUS SOURCES. IF FURTHER INFORMATION REGARDING PROJECT CONTROL IS NEEDED, PLEASE CONTACT THE LOCATION AND SURVEYS UNIT.