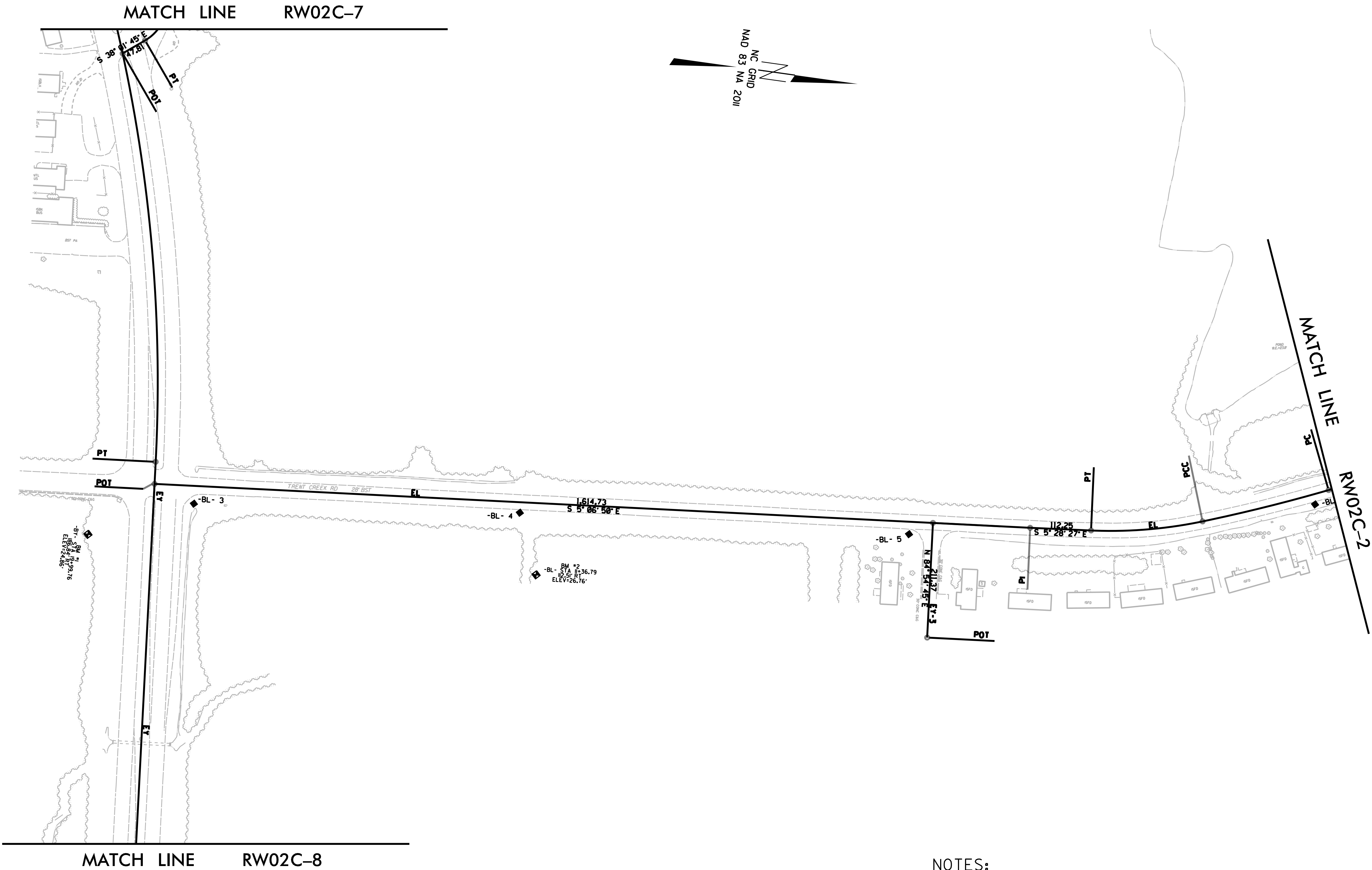


SURVEY CONTROL SHEET R-4463A
W/ EXISTING CENTERLINE ALIGNMENTS PRIOR TO CONSTRUCTION

PROJECT REFERENCE NO.	SHEET NO.
R-4463A	RW02C-1
Location and Surveys	
DIVISION 2 LOCATION & SURVEYS	



- NOTES:
1. PROJECT CONTROL WAS ESTABLISHED USING GNSS, THE GLOBAL NAVIGATION SATELLITE SYSTEM.
 2. THE SURVEY CONTROL DATA FOR THIS PROJECT HAS BEEN COMPILED FROM VARIOUS SOURCES. IF FURTHER INFORMATION REGARDING PROJECT CONTROL IS NEEDED, PLEASE CONTACT THE LOCATION AND SURVEYS UNIT.

6/2/2019

REVISIONS

I4-NOV-2018 06:58
N:\HURFAL\085\4463A\Control\1 Sheets\R4463A_1s-RW02C-1.dgn
morhodes1 AT LS-299767