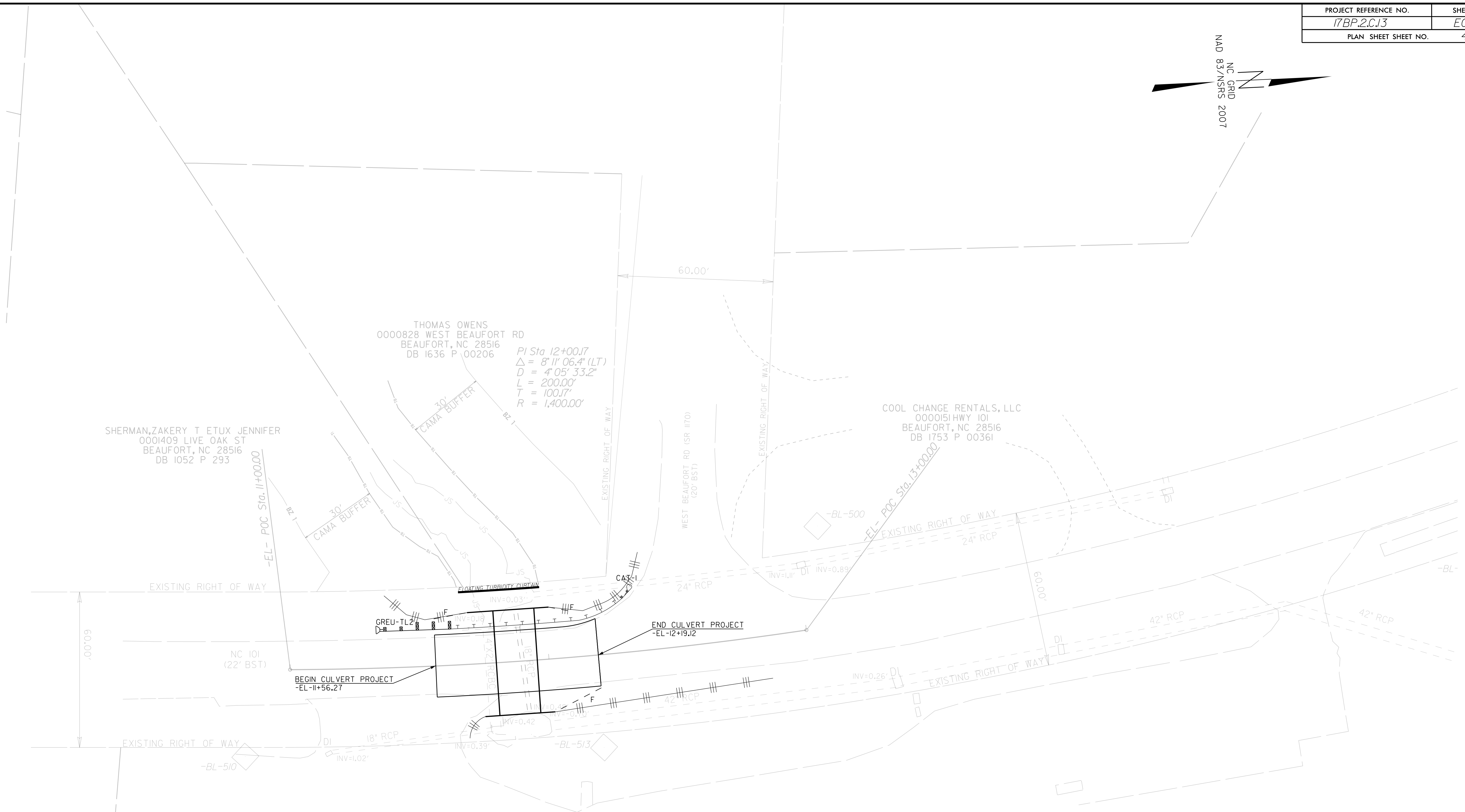


PROJECT REFERENCE NO.	SHEET NO.
17BP.2C.13	EC-4
PLAN SHEET SHEET NO.	4

NC GRID
NAD 83/NSRS 2007



**NOTE: COIR FIBER MAT AND SAFETY FENCE
PLACED AS DIRECTED BY ENGINEER**

Pipe Installation Schedule

1. *Install erosion control devices per plans, including impervious dikes, silt bag and turbidity curtain (if needed).*
2. *Remove material (asphalt, debris, and waste) and existing pipe while limiting, as much as possible, material and sediment from entering the stream and/or escaping from the project.
Stockpile any material that can be reused (contained within silt fence).*
3. *Prepare pipe foundation. The new grade should be one foot below the existing streambed. Bedding material will be cleaned/washed stone.*
4. *Place new pipe and compact fill. Install slope protection on inlet and outlet as permit allows.*
5. *Complete installation of erosion control measures (wattles, silt fences, etc.) and perform maintenance as needed on existing measures.*
6. *Matting with nylon mesh cannot be used within 25' of the top of the stream bank.*
7. *Establishment permanent vegetation as soon as possible. The disturbed areas will be seeded, mulched, crimped, and tacked. Once vegetation has been established and approval given, EC devices will be removed.*

*****Perform weekly NPDES inspections and document using the most recent NPDES inspection form. Inspections are also required within 24 hours of a 1 inch rainfall event that occurs within 24 hours.**

REVISIONS

8/17/99

STD..Central Let\101070pipe_psh ec4.dgn

06-MAY-2025 20:45
G:\PROJECTS\CARTERET\70-101 PIPE\survey\2024
roadleu