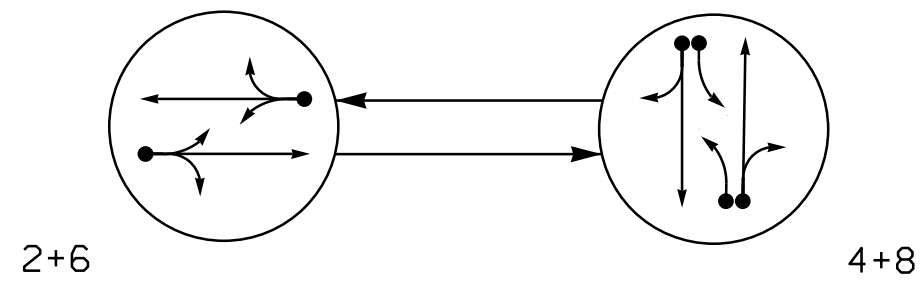


PHASING DIAGRAM



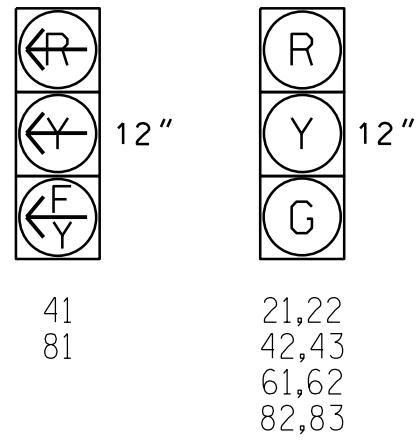
PHASING DIAGRAM DETECTION LEGEND

- ←●→ DETECTED MOVEMENT
- ←○→ UNDETECTED MOVEMENT (OVERLAP)
- ←○→ UNSIGNALIZED MOVEMENT
- ←○→ PEDESTRIAN MOVEMENT

SIGNAL FACE	PHASE		
	2+6	4+8	FLASH
21,22	G	R	R
41	R	G	R
42,43	R	G	R
61,62	G	R	R
81	R	G	R
82,83	R	G	R

SIGNAL FACE I.D.

All Heads L.E.D.



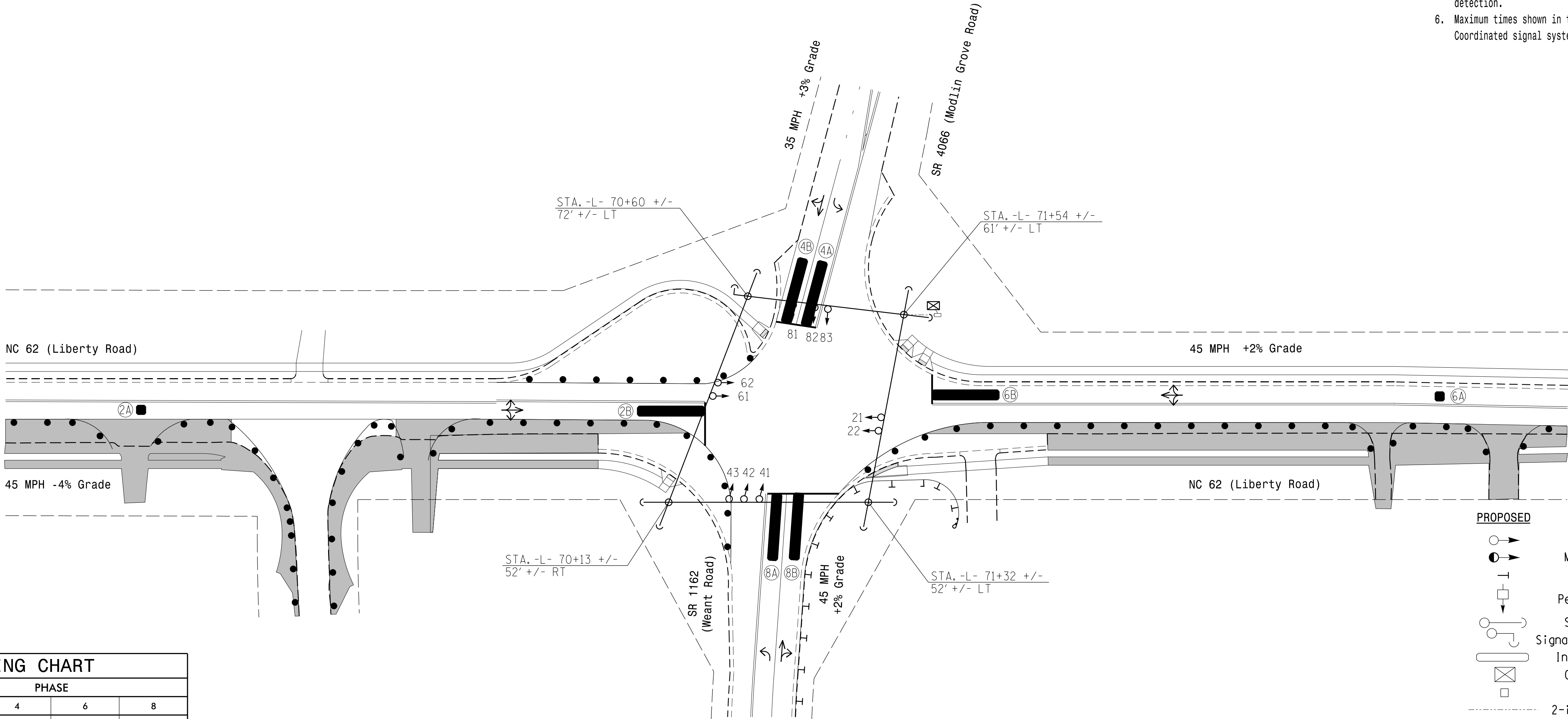
ASC/3 DETECTOR INSTALLATION CHART												
DETECTOR					PROGRAMMING							
ZONE(S)	SIZE (FT)	DISTANCE FROM STOPBAR (FT)	TURNS	NEW LOOP	PHASE	CALLING	EXTEND TIME	DELAY TIME	USE ADDED INITIAL	TYPE	SYSTEM LOOP	NEW CARD
2A	6X6	300	*	*	2	Yes	-	-	-	N	-	*
2B	6X40	0	*	*	2	Yes	2.0	5.0	-	G	-	*
4A	6X40	0	*	*	4	Yes	-	3.0	-	N	-	*
4B	6X40	0	*	*	4	Yes	-	10.0	-	N	-	*
6A	6X6	300	*	*	6	Yes	-	-	-	N	-	*
6B	6X40	0	*	*	6	Yes	2.0	5.0	-	G	-	*
8A	6X40	0	*	*	8	Yes	-	3.0	-	N	-	*
8B	6X40	0	*	*	8	Yes	-	10.0	-	N	-	*

* Multizone Microwave Detection.

2 Phase
Fully Actuated
(High Point Signal System)

NOTES

- Refer to "Roadway Standard Drawings NCDOT" dated January 2024 and "Standard Specifications for Roads and Structures" dated January 2024.
- Do not program signal for late night flashing operation unless otherwise directed by the Engineer.
- Set all detector units to presence mode.
- Locate new cabinet so as not to obstruct sight distance of vehicles turning right on red.
- This intersection uses multi-zone microwave detection. Install detectors according to the manufacturer's instructions to achieve the desired detection.
- Maximum times shown in timing chart are for free-run operation only. Coordinated signal system timing values supersede these values.



LEGEND

PROPOSED	EXISTING

ASC/3 TIMING CHART

FEATURE	PHASE			
	2	4	6	8
Min Green *	12	7	12	7
Walk *	-	-	-	-
Ped Clear	-	-	-	-
Veh. Extension *	6.0	2.0	6.0	2.0
Max 1 *	75	30	75	30
Yellow	4.9	4.3	4.9	4.3
Red Clear	2.0	1.2	2.0	1.2
Actuations B4 Add *	-	-	-	-
Seconds /Actuation *	-	-	-	-
Max Initial *	-	-	-	-
Time Before Reduction *	15	-	15	-
Time To Reduce *	30	-	30	-
Minimum Gap	3.0	-	3.0	-
Locking Detector	-	-	-	-
Recall Position	VEH RECALL	-	VEH RECALL	-
Dual Entry	-	X	-	X
Simultaneous Gap	X	X	X	X

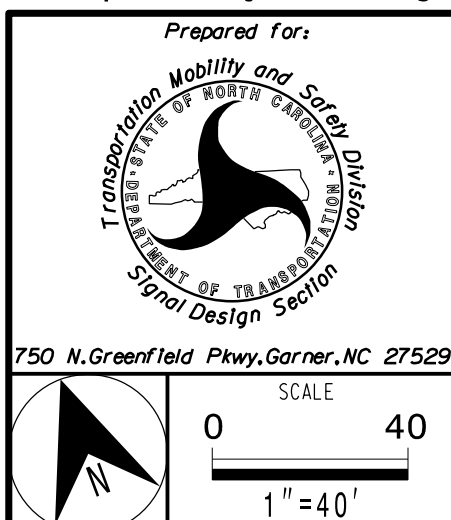
* These values may be field adjusted. Do not adjust Min Green and Extension times for phases 2 and 6 lower than what is shown. Min Green for all other phases should not be lower than 4 seconds.

New Installation -
Temporary Design 1 (TMP Phase II)



DRMP, INC.
8210 UNIVERSITY EXECUTIVE PARK DR.
SUITE 220
CHARLOTTE, NC 28262
PHONE: 704-548-4260

NC LICENSE NO. F-1524
www.drmp.com



NC 62 (Liberty Road) at SR 1162 (Weant Road) / SR 4066 (Modlin Grove Road)			
Division 7	Guilford County	Archdale	
PLAN DATE: March 2025	REVIEWED BY: ZM Esposito	PREPARED BY: AW Poole	RKA PROJ. NO: 17380 (040)
REVISIONS	INIT.	DATE	

DOCUMENT NOT CONSIDERED FINAL UNLESS ALL SIGNATURES COMPLETED	SEAL
	Signed by:
	DATE: 3/17/2025
	SIG. INVENTORY NO. 07-2100T1