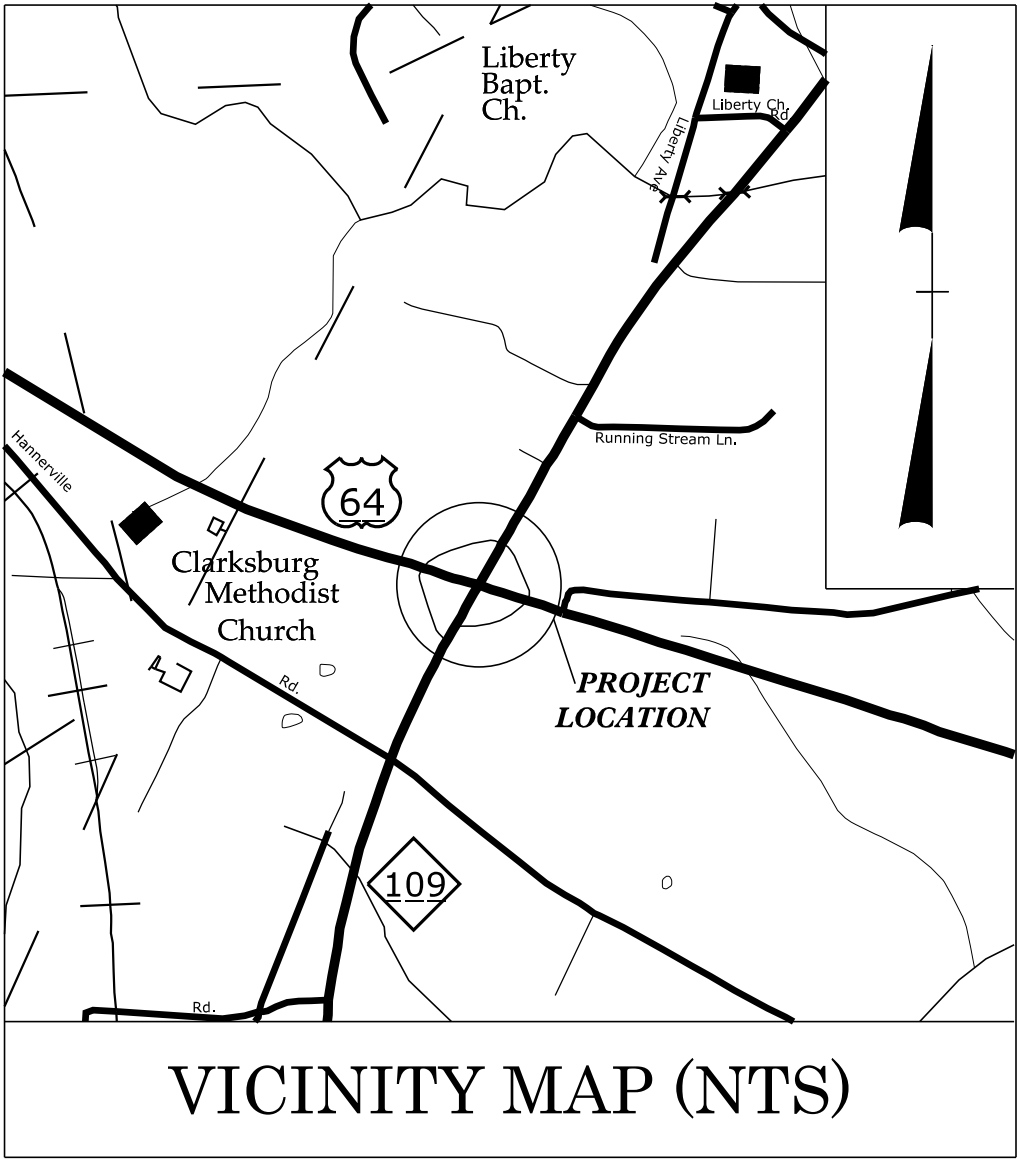


TIP PROJECT: B-5777

CONTRACT: _____



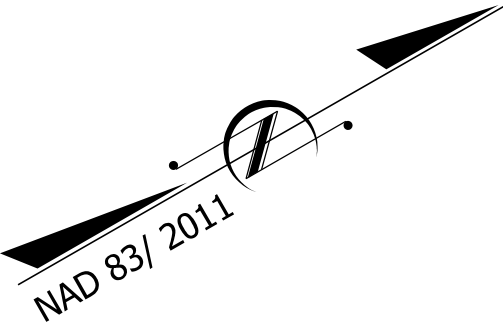
STATE OF NORTH CAROLINA
DIVISION OF HIGHWAYS

UTILITY CONSTRUCTION PLANS
DAVIDSON COUNTY

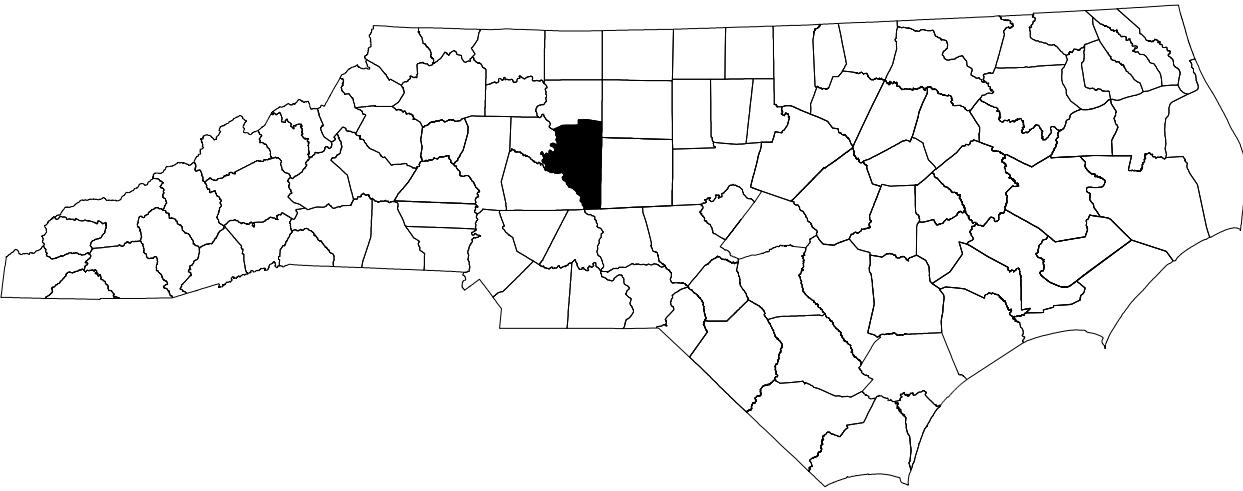
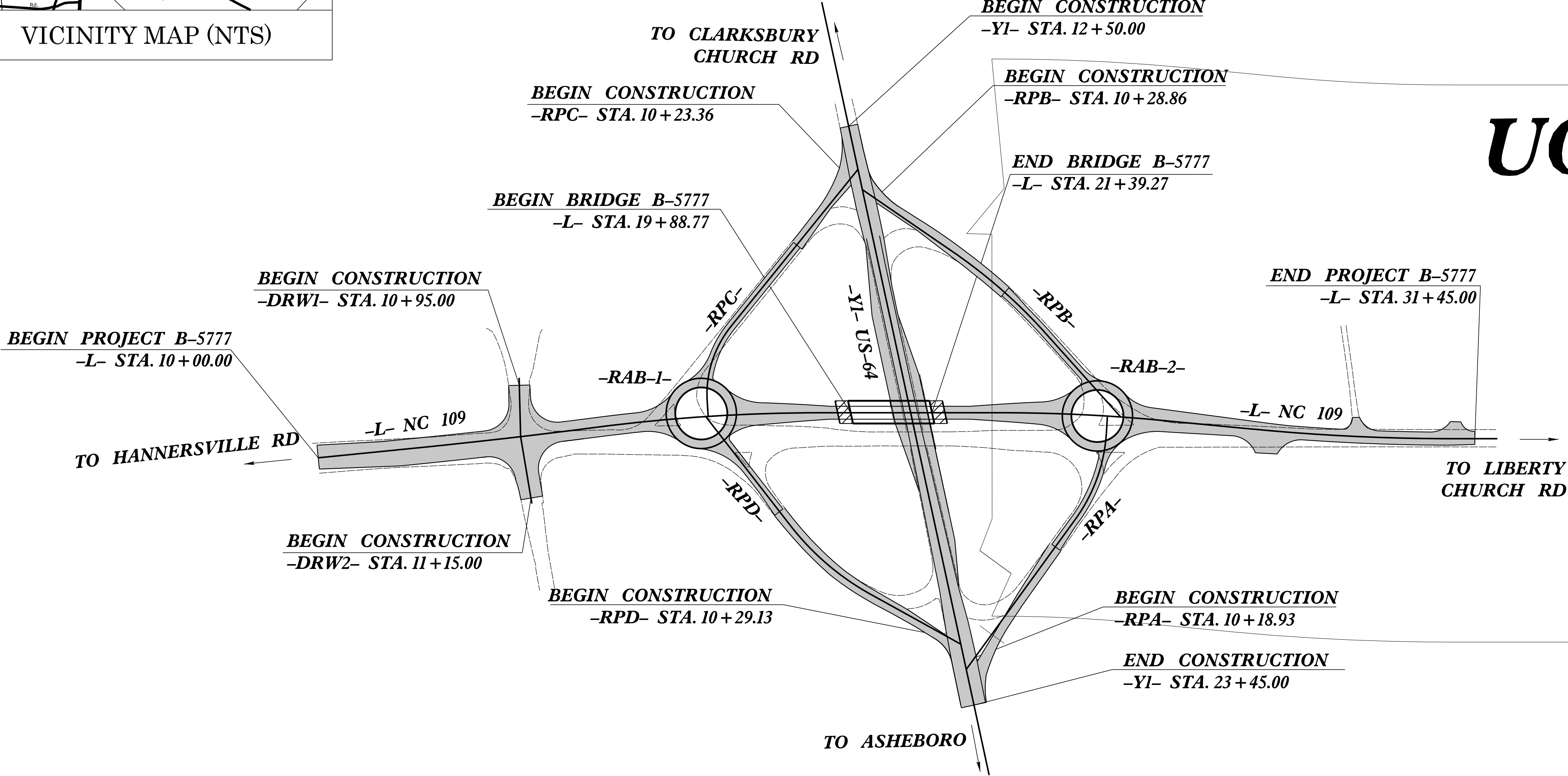
LOCATION: BRIDGE NO. 58 OVER US 64 ON NC 109

TYPE OF WORK: WATER AND SEWER RELOCATION

STATE	STATE PROJECT REFERENCE NO.	SHEET NO.	TOTAL SHEETS
N.C.	B-5777	UC1	9
STATE PROJ. NO.	F. A. PROJ. NO.	DESCRIPTION	
45733.1.1		PE	
45733.1.2		RW, UTIL.	

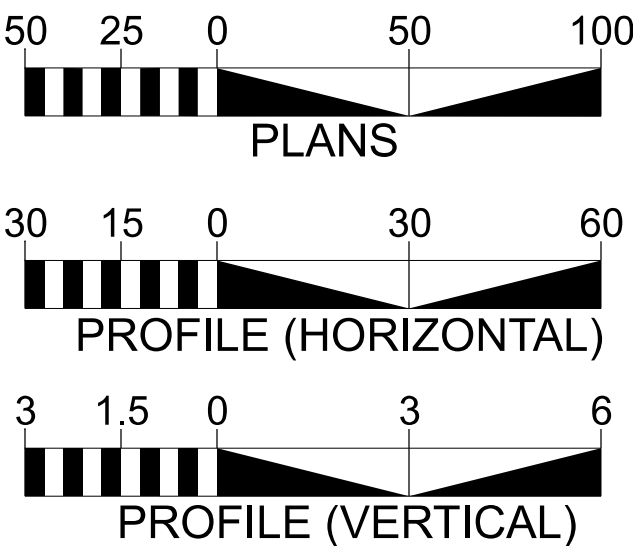


UC4



DOCUMENT NOT CONSIDERED FINAL
UNLESS ALL SIGNATURES COMPLETED

GRAPHIC SCALES



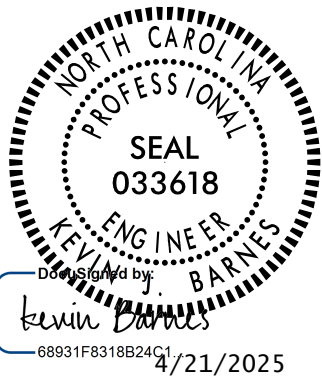
INDEX OF SHEETS

SHEET NO.:	DESCRIPTION:
UC1	TITLE SHEET
UC2	UTILITY SYMBOLOGY
UC3	NOTES
UC4	UC PLAN SHEET
UC5	UC PROFILE SHEET

WATER AND SEWER
OWNERS ON PROJECT

- (A) WATER - DAVIDSON WATER
(B) SEWER - CITY OF THOMASVILLE SEWER

SEAL



PREPARED IN THE OFFICE OF

Mead&Hunt

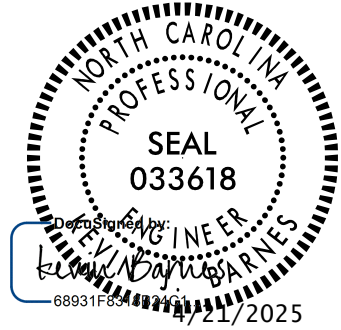
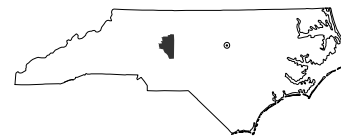
111 E. Hargett Street, Suite 300
Raleigh, North Carolina 27601
919-714-8670 | meadhunt.com
NC License No. F-1235

JENNIFER SMITH-MORTON, PE	UTILITY PROJECT MANAGER
ANDREW BRAME, EI	PROJECT UTILITY DESIGNER
KEVIN BARNES, PE	UTILITY MANAGER



DIVISION OF HIGHWAYS
UTILITIES UNIT
1555 MAIL SERVICES CENTER
RALEIGH, NC 27699-1555
PHONE (919) 707-6690
FAX (919) 250-4151

AMY D. YORK	WESTERN UTILITIES MANAGER
JOSHUA A. MCMAHAN	DIVISION UTILITY ENGINEER
DAYTON C. MARTIN, III	REGIONAL UTILITY COORDINATOR
LOU PORTER	ASSISTANT DIVISION UTILITY ENGINEER



STATE OF NORTH CAROLINA
DIVISION OF HIGHWAYS

UTILITIES PLAN SHEET SYMBOLS

PROPOSED WATER SYMBOLS

Water Line (Sized as Shown)	
11¼ Degree Bend	
22½ Degree Bend	
45 Degree Bend	
90 Degree Bend	
Plug	
Tee	
Cross	
Reducer	
Gate Valve	
Butterfly Valve	
Tapping Valve	
Tapping Sleeve & Valve	
Line Stop	
Line Stop with Bypass	
Blow Off	
Fire Hydrant	
Relocate Fire Hydrant	
Remove Fire Hydrant	
Water Meter	
Relocate Water Meter	
Remove Water Meter	
Water Pump Station	
RPZ Backflow Preventer	
DCV Backflow Preventer	
Relocate RPZ Backflow Preventer	
Relocate DCV Backflow Preventer	

PROPOSED SEWER SYMBOLS

Gravity Sewer Line (Sized as Shown)	
Force Main Sewer Line (Sized as Shown)	
Manhole (Sized per Note)	
Sewer Pump Station	

PROPOSED MISCELLANOUS UTILITIES SYMBOLS

Power Pole	
Telephone Pole	
Joint Use Pole	
Telephone Pedestal	
Utility Line by Others (Type as Shown)	
Trenchless Installation	
Encasement by Open Cut	
Encasement	

Thrust Block	
Air Release Valve	
Utility Vault	
Concrete Pier	
Steel Pier	
Plan Note	
Pay Item Note	

NOTE

PAY ITEM

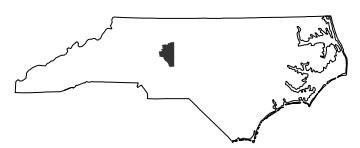
EXISTING UTILITIES SYMBOLS

Power Pole	
Telephone Pole	
Joint Use Pole	
Utility Pole	
Utility Pole with Base	
H-Frame Pole	
Power Transmission Line Tower	
Water Manhole	
Power Manhole	
Telephone Manhole	
Sanitary Sewer Manhole	
Hand Hole for Cable	
Power Transformer	
Telephone Pedestal	
CATV Pedestal	
Gas Valve	
Gas Meter	
Located Miscellaneous Utility Object	
Abandoned According to Utility Records	
End of Information	

*Underground Power Line	
*Underground Telephone Cable	
*Underground Telephone Conduit	
*Underground Fiber Optics Telephone Cable	
*Underground TV Cable	
*Underground Fiber Optics TV Cable	
*Underground Gas Pipeline	
Aboveground Gas Pipeline	
*Underground Water Line	
Aboveground Water Line	
*Underground Gravity Sanitary Sewer Line	
Aboveground Gravity Sanitary Sewer Line	
*Underground SS Forced Main Line	
Underground Unknown Utility Line	
SUE Test Hole	
Water Meter	
Water Valve	
Fire Hydrant	
Sanitary Sewer Cleanout	

*For Existing Utilities

Utility Line Drawn from Record (Type as Shown)	
Designated Utility Line (Type as Shown)	



UTILITY CONSTRUCTION

PROJECT SPECIFIC NOTES:

1. PROPOSED WATER LINE FROM -L- LINE STATION 25+54 TO -L- LINE STATION 25+18 SHALL BE D.I.R.J. (DUCTILE IRON RESTRAINED JOINT) PIPE.

2. PROPOSED SEWER LINE FROM -L- LINE STATION 26+06 TO -L- LINE STATION 26+44 SHALL BE D.I.R.J. (DUCTILE IRON RESTRAINED JOINT) PIPE.

3. CONTRACTOR'S ATTENTION IS DIRECTED TO SECTIONS 102, 107, AND 1550 OF THE STANDARD SPECIFICATIONS CONCERNING TRENCHLESS INSTALLATION. IT IS CONTRACTOR'S RESPONSIBILITY TO HAVE BORE DESIGNED AND SEALED BY A LICENSED NORTH CAROLINA PROFESSIONAL ENGINEER. NO DAMAGE IS ALLOWED TO RIVER, WETLANDS, OR BUFFER ZONES.

4. IF HDPE PIPE IS INSTALLED BY DIRECTIONAL DRILL. IT SHALL BE FILLED WITH WATER AND NOT BE CONNECTED TO ANY OTHER PIPE OR FITTINGS FOR ONE WEEK FROM THE TIME OF INSTALLATION.

LIST OF STANDARD DRAWINGS

NONE

GENERAL NOTES:

1. THE PROPOSED UTILITY CONSTRUCTION SHALL MEET THE APPLICABLE REQUIREMENTS OF THE NC DEPARTMENT OF TRANSPORTATION'S "STANDARD SPECIFICATIONS FOR ROADS AND STRUCTURES" 2024.

2. THE EXISTING WATER UTILITIES BELONG TO DAVIDSON WATER INC. CONTACT: BEN PALMER
PHONE: 336-731-5561
THE EXISTING SEWER UTILITIES BELONG TO THE CITY OF THOMASVILLE, NC. CONTACT: MORGAN HUFFMAN
PHONE: 336-475-4220

3. ALL WATER LINES TO BE INSTALLED WITHIN COMPLIANCE OF THE RULES AND REGULATIONS OF THE NORTH CAROLINA DEPARTMENT OF ENVIRONMENTAL QUALITY, DIVISION OF WATER RESOURCES, PUBLIC WATER SUPPLY SECTION. ALL SEWER LINES TO BE INSTALLED WITHIN COMPLIANCE OF THE RULES AND REGULATIONS OF THE NORTH CAROLINA DEPARTMENT OF ENVIRONMENT QUALITY, DIVISION OF WATER RESOURCES, WATER QUALITY SECTION. PERFORM ALL WORK IN ACCORDANCE WITH THE APPLICABLE PLUMBING CODES.

4. THE UTILITY OWNER OWNS THE EXISTING UTILITY FACILITIES AND WILL OWN THE NEW UTILITY FACILITIES AFTER ACCEPTANCE BY THE DEPARTMENT. THE DEPARTMENT OWNS THE CONSTRUCTION CONTRACT AND HAS ADMINISTRATIVE AUTHORITY. COMMUNICATIONS AND DECISIONS BETWEEN THE CONTRACTOR AND UTILITY OWNER ARE NOT BINDING UPON THE DEPARTMENT OR THIS CONTRACT UNLESS AUTHORIZED BY THE ENGINEER. AGREEMENTS BETWEEN THE UTILITY OWNER AND CONTRACTOR FOR THE WORK THAT IS NOT PART OF THIS CONTRACT OR IS SECONDARY TO THIS CONTRACT ARE ALLOWED, BUT ARE NOT BINDING UPON THE DEPARTMENT.

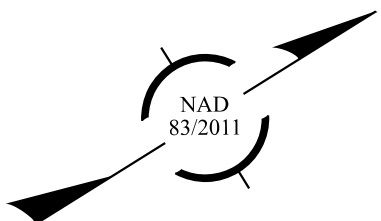
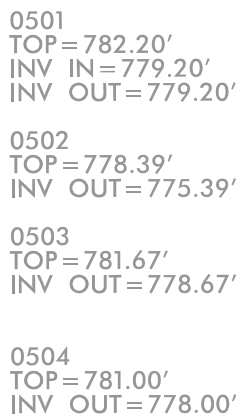
5. PROVIDE ACCESS FOR THE DEPARTMENT PERSONNEL AND THE OWNER'S REPRESENTATIVES TO ALL PHASES OF CONSTRUCTION. NOTIFY DEPARTMENT PERSONNEL AND THE UTILITY OWNER TWO WEEKS PRIOR TO COMMENCEMENT OF ANY WORK AND ONE WEEK PRIOR TO SERVICE INTERRUPTION. KEEP UTILITY OWNERS' REPRESENTATIVES INFORMED OF WORK PROGRESS AND PROVIDE OPPORTUNITY FOR INSPECTION OF CONSTRUCTION AND TESTING.

6. THE PLANS DEPICT THE BEST AVAILABLE INFORMATION FOR THE LOCATION, SIZE, AND TYPE OF MATERIAL FOR ALL EXISTING UTILITIES. MAKE INVESTIGATIONS FOR DETERMINING THE EXACT LOCATION, SIZE, AND TYPE MATERIAL OF THE EXISTING FACILITIES AS NECESSARY FOR THE CONSTRUCTION OF THE PROPOSED UTILITIES AND FOR AVOIDING DAMAGE TO EXISTING FACILITIES. REPAIR ANY DAMAGE INCURRED TO EXISTING FACILITIES TO THE ORIGINAL OR BETTER CONDITION AT NO ADDITIONAL COST TO THE DEPARTMENT.

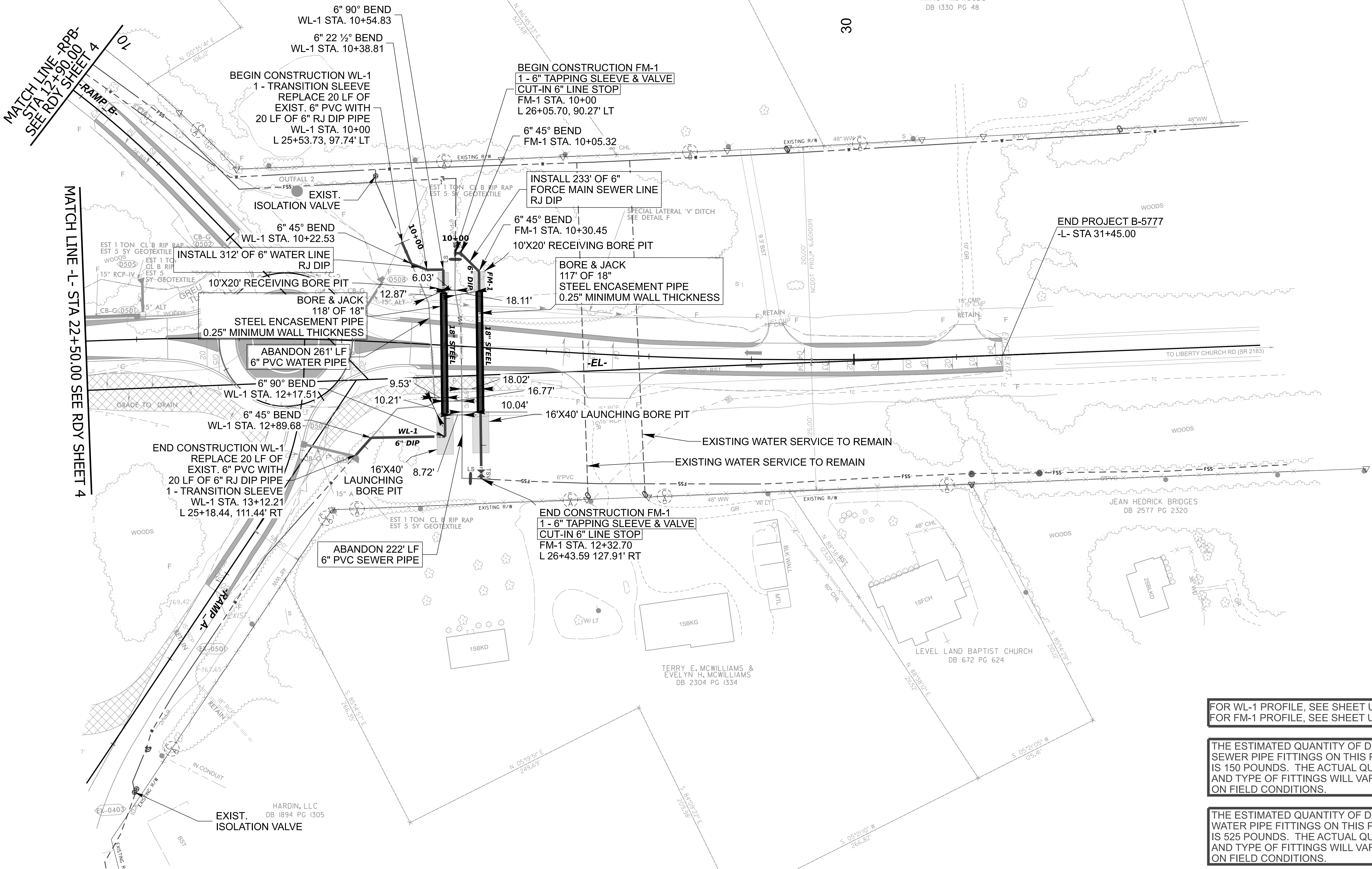
7. MAKE FINAL CONNECTIONS OF THE NEW WORK TO THE EXISTING SYSTEM WHERE INDICATED ON THE PLANS, AS REQUIRED TO FIT THE ACTUAL CONDITIONS, OR AS DIRECTED.

8. MAKE CONNECTIONS BETWEEN EXISTING AND PROPOSED UTILITIES AT TIMES MOST CONVENIENT TO THE PUBLIC, WITHOUT ENDANGERING THE UTILITY SERVICE, AND IN ACCORDANCE WITH THE UTILITY OWNER'S REQUIREMENTS. MAKE CONNECTIONS ON WEEKENDS, AT NIGHT, AND ON HOLIDAYS IF NECESSARY.

9. ALL UTILITY MATERIALS SHALL BE APPROVED PRIOR TO DELIVERY TO THE PROJECT. SEE 1500-7, " SUBMITTALS AND RECORDS" IN SECTION 1500 OF THE STANDARD SPECIFICATIONS.



JOHN A. MARTIN
DB 583 PG 881



FOR WL-1 PROFILE, SEE SHEET UC5
FOR FM-1 PROFILE, SEE SHEET UC5

THE ESTIMATED QUANTITY OF DUCTILE IRON
SEWER PIPE FITTINGS ON THIS PLAN SHEET
IS 150 POUNDS. THE ACTUAL QUANTITY
AND TYPE OF FITTINGS WILL VARY BASED
ON FIELD CONDITIONS.

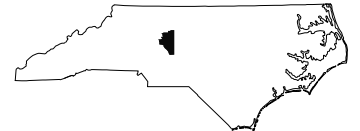
THE ESTIMATED QUANTITY OF DUCTILE IRON
WATER PIPE FITTINGS ON THIS PLAN SHEET
IS 525 POUNDS. THE ACTUAL QUANTITY
AND TYPE OF FITTINGS WILL VARY BASED
ON FIELD CONDITIONS.

UTILITY CONSTRUCTION

B-5777

UC5

NORTH CAROLINA
DEPARTMENT OF TRANSPORTATION
DAVIDSON COUNTY



UTILITY DESIGN UNIT

UTILITY CONSTRUCTION
PLANS ONLY



DESIGNED BY: JENNIFER SMITH-MORTON

DRAWN BY: ANDREW BRAME

CHECKED BY: JENNIFER SMITH-MORTON

APPROVED BY:

REVISED:

MEAD & HUNT INC.

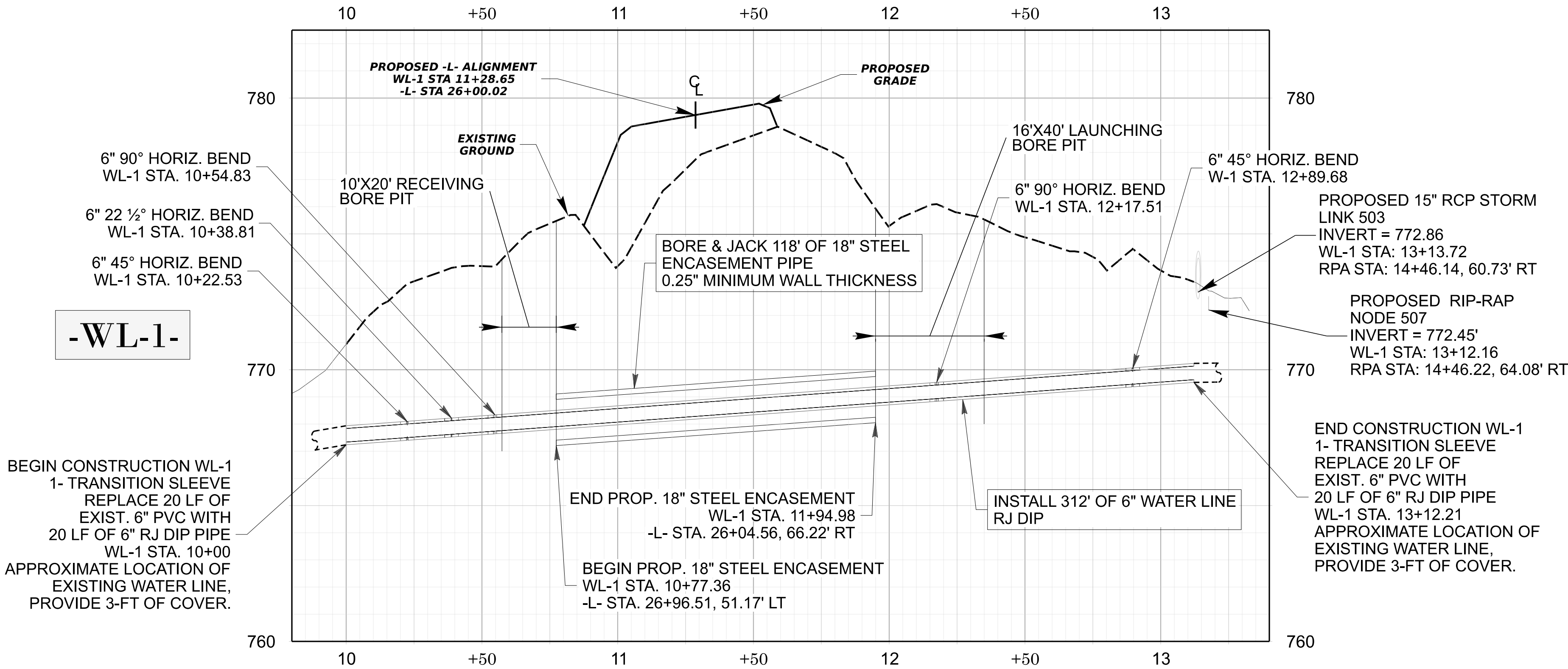
PHONE: (919)-714-8870

Mead&Hunt

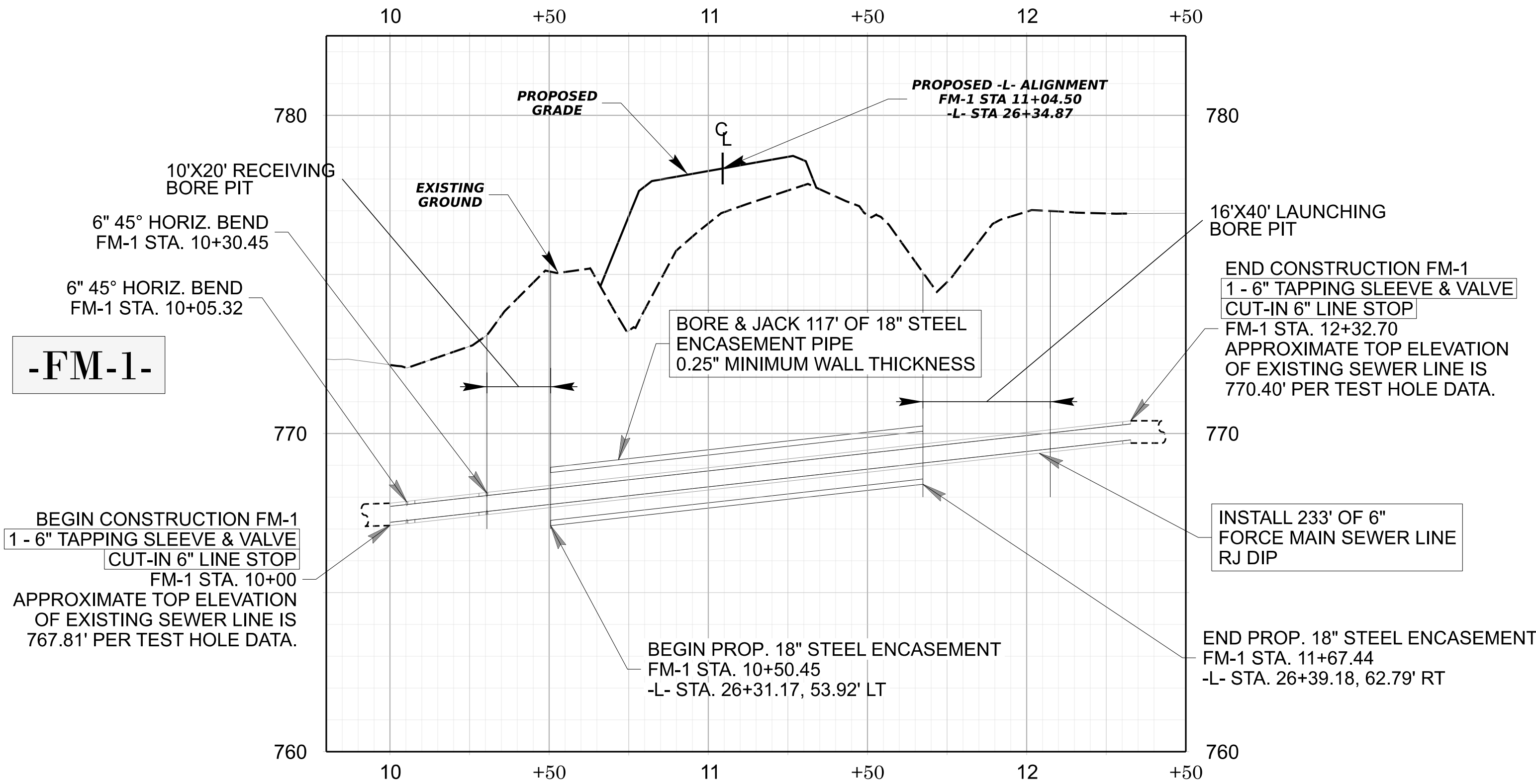
111 E. Hargett Street, Suite 300
Raleigh, North Carolina 27601
919-714-8870 | meadhunt.com
NC License No. F-1235

DOCUMENT NOT CONSIDERED FINAL
UNLESS ALL SIGNATURES COMPLETED

REVISIONS



[FOR WL-1 PLAN, SEE SHEET UC4]



[FOR FM-1 PLAN, SEE SHEET UC4]