

SEE SHEET RW02C-3  
FOR FURTHER ALIGNMENT  
AND CONTROL DETAILS

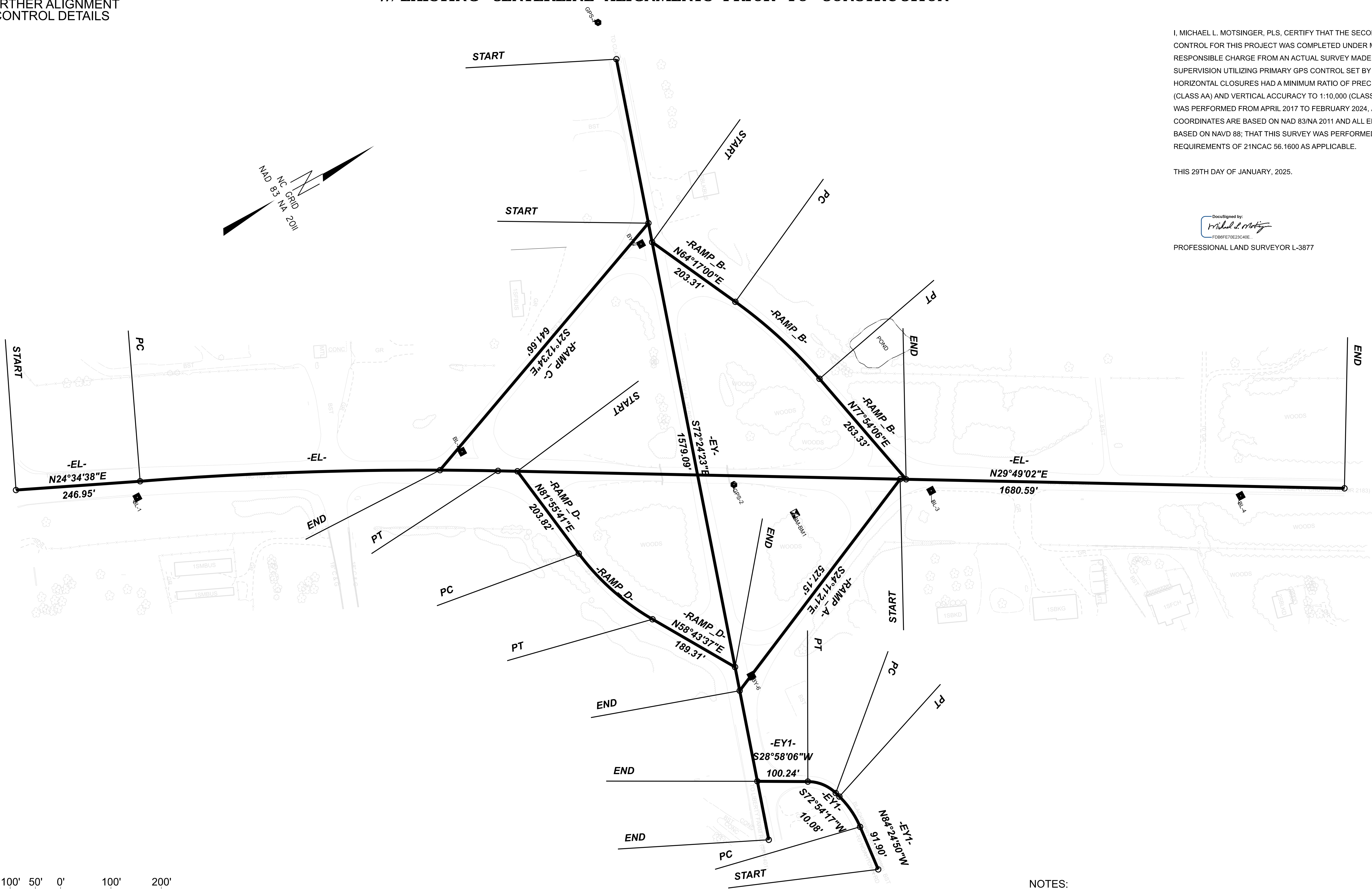
# SECONDARY SURVEY CONTROL SHEET

W/EXISTING CENTERLINE ALIGNMENTS PRIOR TO CONSTRUCTION

I, MICHAEL L. MOTSINGER, PLS, CERTIFY THAT THE SECONDARY BASELINE CONTROL FOR THIS PROJECT WAS COMPLETED UNDER MY DIRECT AND RESPONSIBLE CHARGE FROM AN ACTUAL SURVEY MADE UNDER MY SUPERVISION UTILIZING PRIMARY GPS CONTROL SET BY OTHERS; THAT ALL HORIZONTAL CLOSURES HAD A MINIMUM RATIO OF PRECISION OF 1:20,000 (CLASS AA) AND VERTICAL ACCURACY TO 1:10,000 (CLASS A). FIELD WORK WAS PERFORMED FROM APRIL 2017 TO FEBRUARY 2024, AND ALL COORDINATES ARE BASED ON NAD 83/NA 2011 AND ALL ELEVATIONS ARE BASED ON NAVD 88; THAT THIS SURVEY WAS PERFORMED TO MEET THE REQUIREMENTS OF 21NCAC 56.1600 AS APPLICABLE.

THIS 29TH DAY OF JANUARY, 2025.

DocuSigned by:  
*Michael L. Motsinger*  
F0B8F5E7E23C4E  
PROFESSIONAL LAND SURVEYOR L-3877



NOTES:

1. THE PROPOSED ALIGNMENT CONTROL DATA FOR THIS PROJECT HAS BEEN COMPILED FROM VARIOUS SOURCES. IF FURTHER INFORMATION REGARDING PROJECT CONTROL IS NEEDED, PLEASE CONTACT THE LOCATION AND SURVEYS UNIT.

B-5777

R/W02C-2

NORTH CAROLINA  
DEPARTMENT  
OF TRANSPORTATION

PROFESSIONAL LAND  
SURVEYOR

DOCUMENT NOT CONSIDERED  
FINAL UNLESS ALL SIGNATURES  
ARE COMPLETED

2024 STANDARD  
SPECIFICATIONS

TIP PROJECT: B-5777  
County: DAVIDSON

PREPARED FOR

LOCATION AND  
SURVEYS UNIT

PREPARED BY  
LOCATION AND SURVEYS  
DIVISION 9  
403 POLO ROAD  
WINSTON-SALEM, NC  
27105