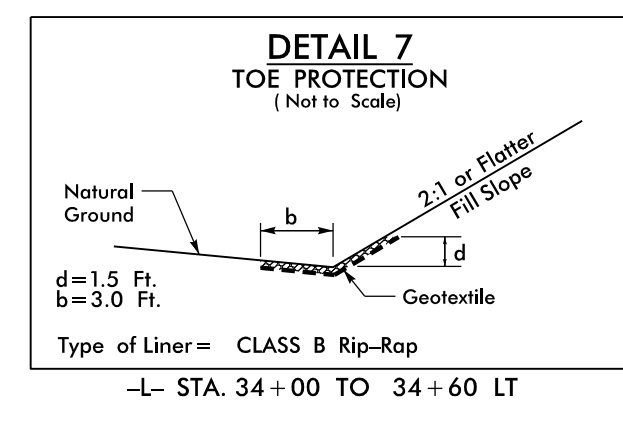
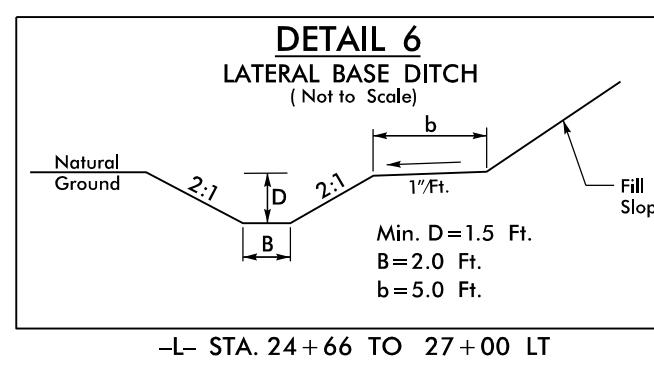
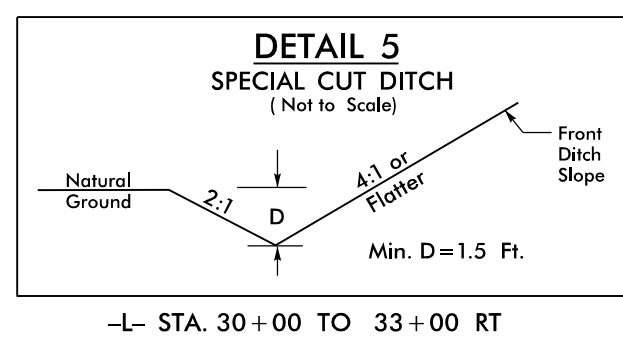
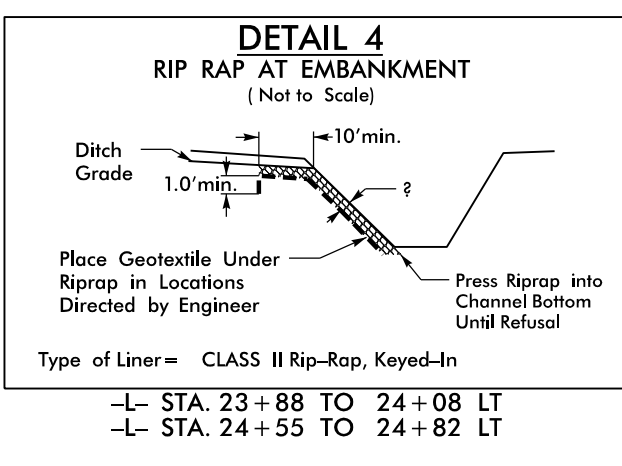
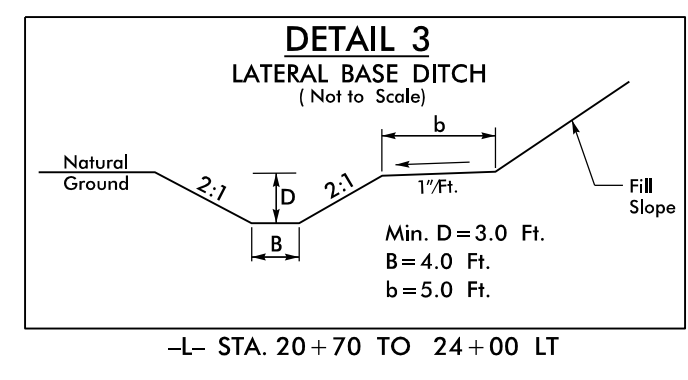


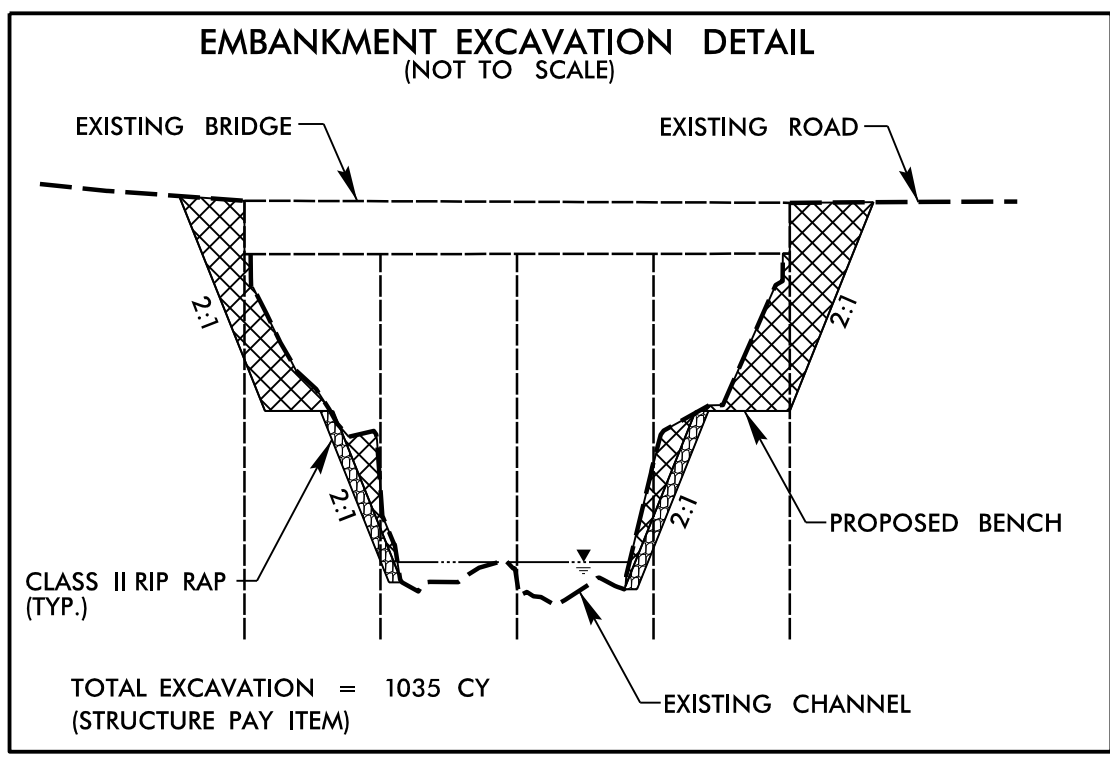
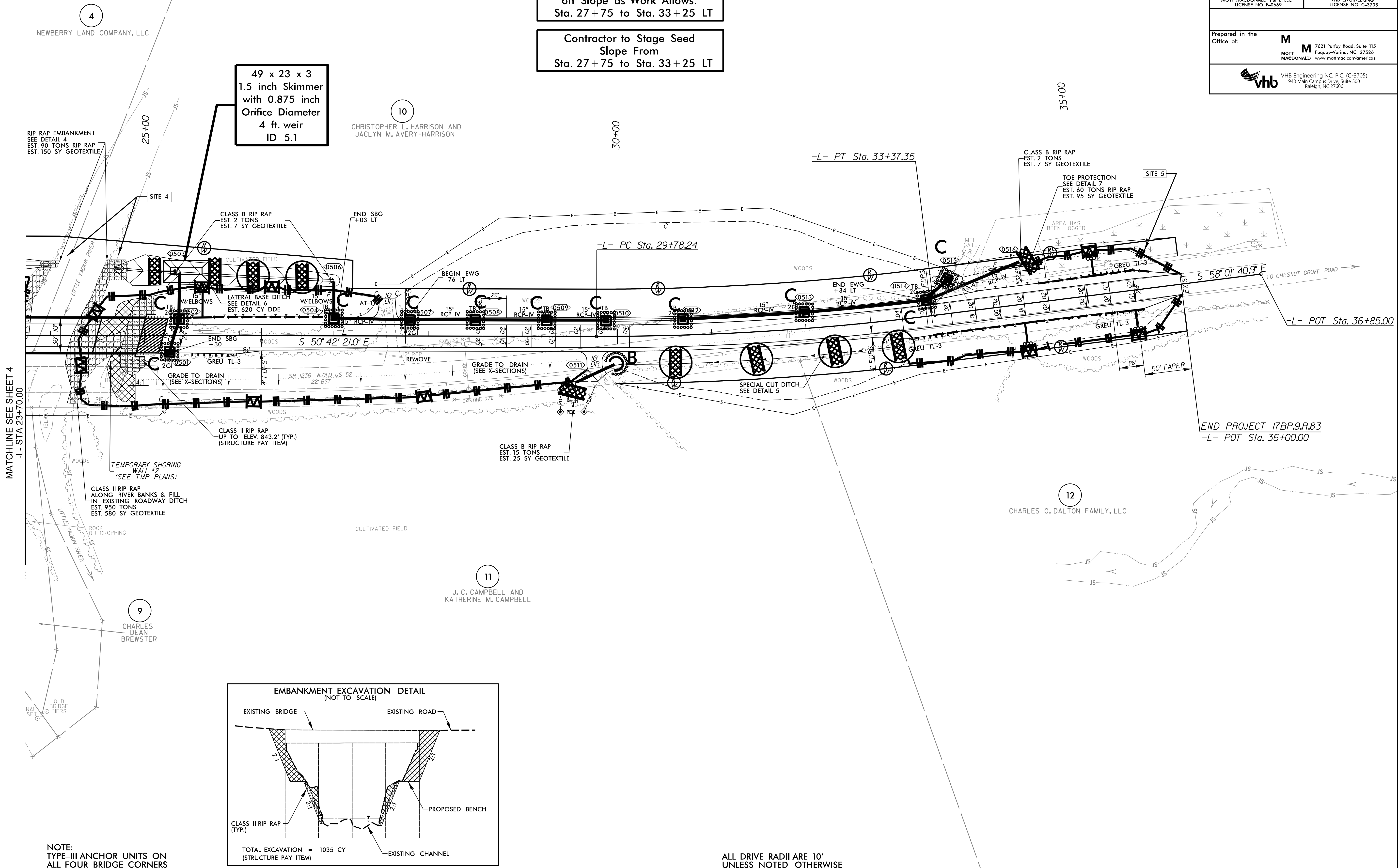
*DESIGN EXCEPTION:
SAG VERTICAL CURVE K
VERTICAL SSD



Place Matting for Erosion Control
on Slope as Work Allows.
Sta. 27+75 to Sta. 33+25 LT

Contractor to Stage Seed
Slope From
Sta. 27+75 to Sta. 33+25 LT

PROJECT REFERENCE 17BP.9.R.83 - STOKES 286	SHEET NO. EC-07/CONST.05
ROADWAY DESIGN ENGINEER	HYDRAULICS ENGINEER
MOTT MACDONALD I & E, LLC LICENSE NO. F-06697	VHB ENGINEERING LICENSE NO. C-3705
Prepared in the Office of:	M MOTT MACDONALD 7621 Purfoy Road, Suite 115 Fuquay-Varina, NC 27526 www.mottmac.com/americas
	vhb VHB Engineering NC, P.C. (C-3705) 940 Main Campus Drive, Suite 500 Raleigh, NC 27606



NOTE:
TYPE-III ANCHOR UNITS ON
ALL FOUR BRIDGE CORNERS

ALL DRIVE RADII ARE 10'
UNLESS NOTED OTHERWISE

USER:default
...S:\stokes286_REU-ps\05_F.mol.dgn
7/31/2024