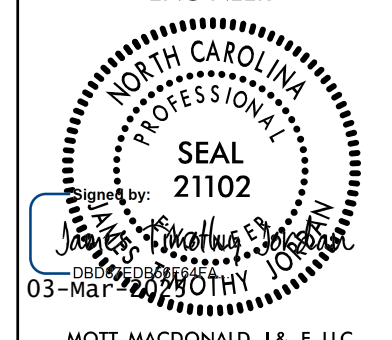
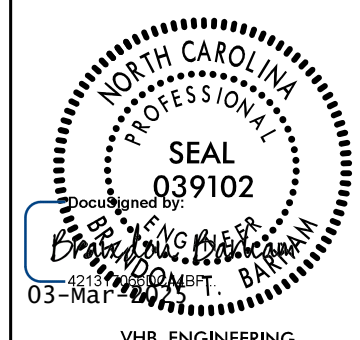

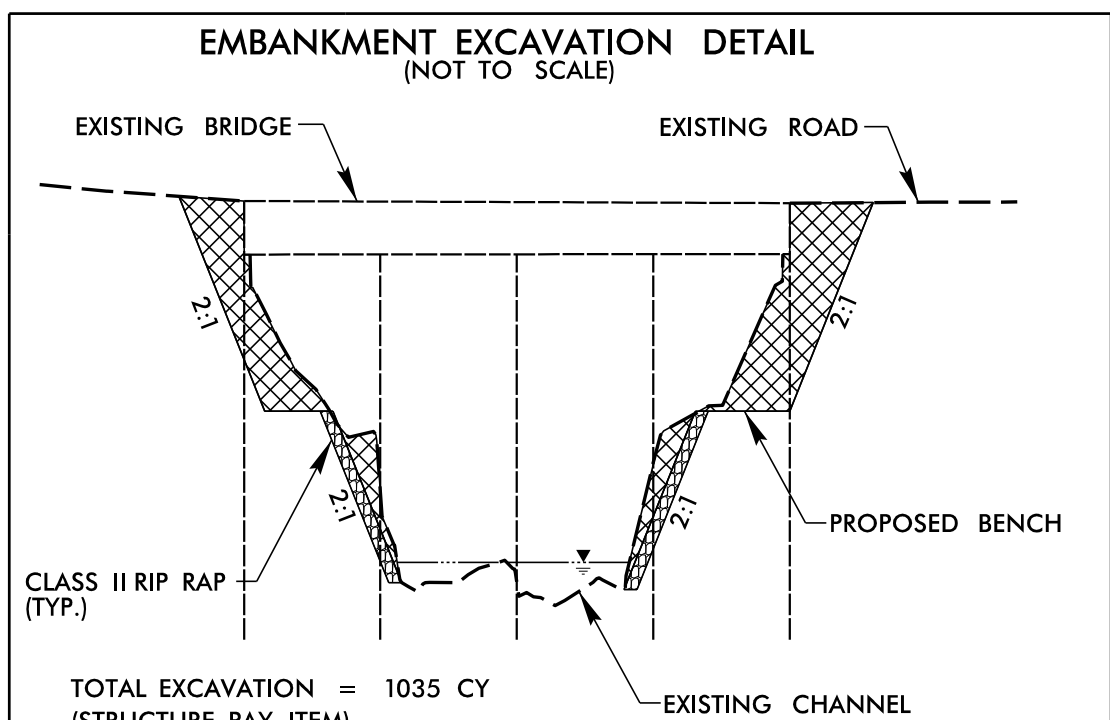
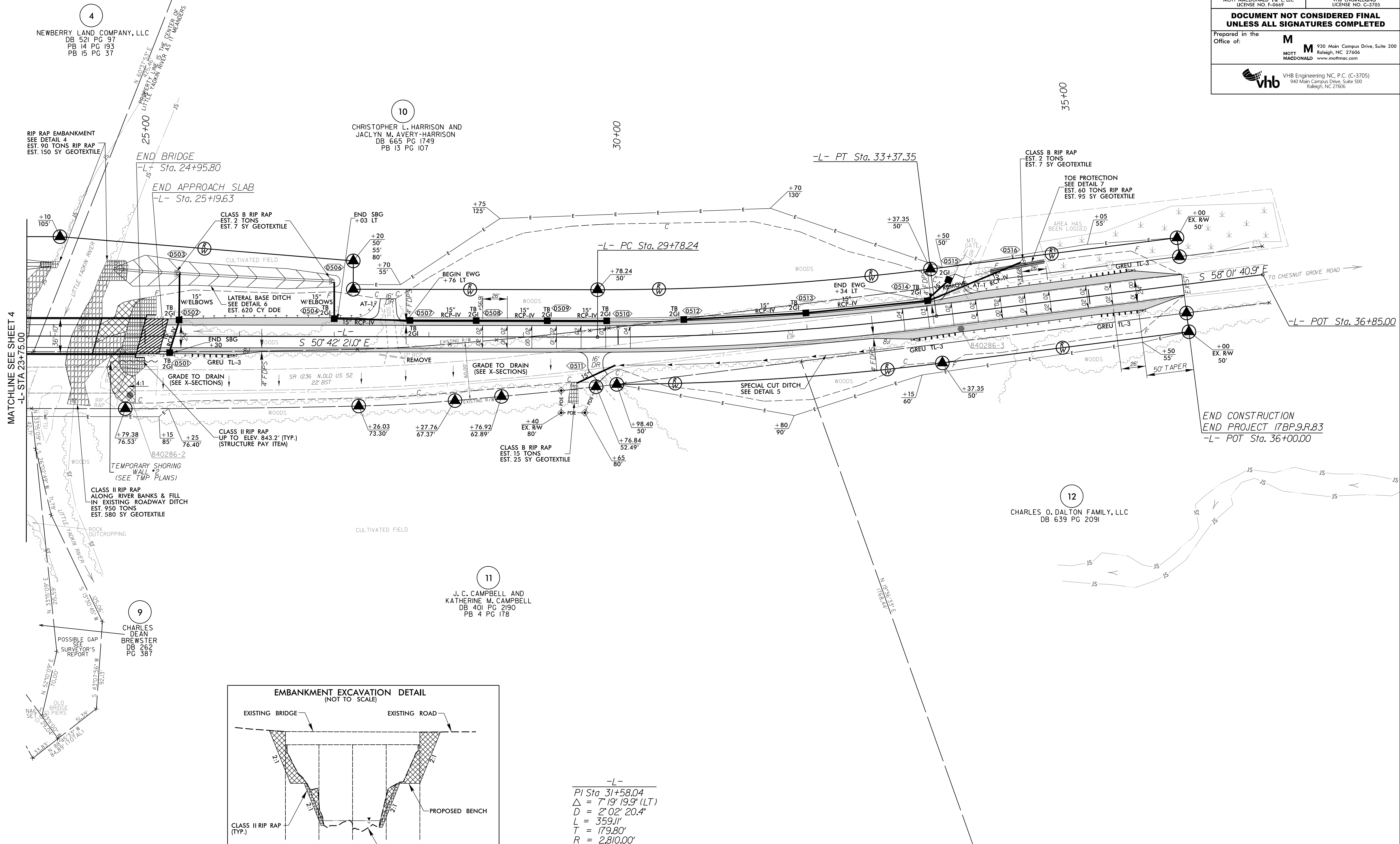
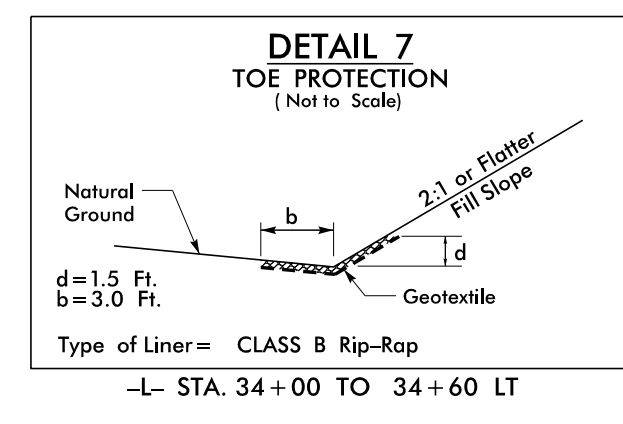
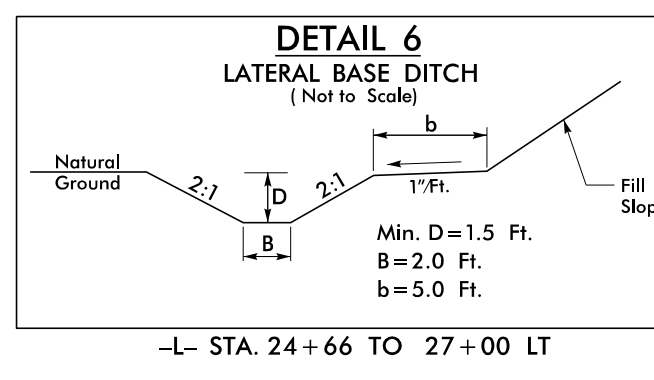
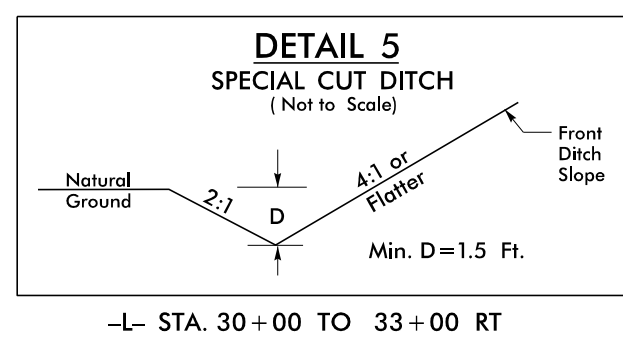
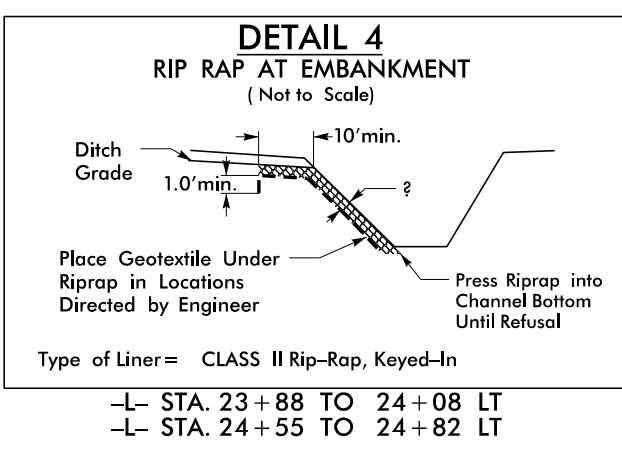
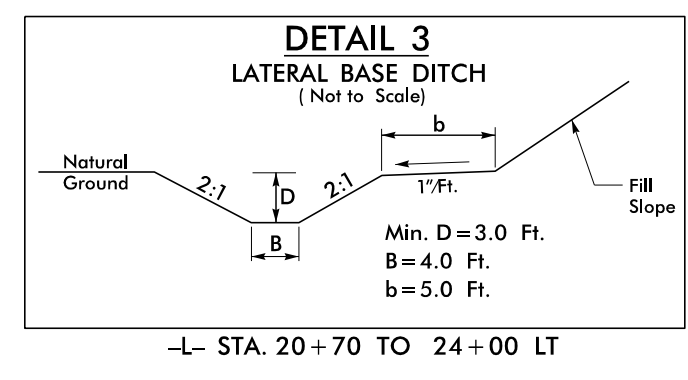


PROJECT REFERENCE		SHEET NO.	
17BP.9.R.83 - STOKES 286		5	
ROADWAY DESIGN ENGINEER		HYDRAULICS ENGINEER	
			
DOCUMENT NOT CONSIDERED FINAL UNLESS ALL SIGNATURES COMPLETED			
Prepared in the Office of:		M MOTT MACDONALD & E. LLC Raleigh, NC 27606 www.mottmac.com	
		 VHB Engineering, Inc. P.C. (C-3705) 940 Main Campus Drive, Suite 500 Raleigh, NC 27606	



-L-
 PI Sta 31+58.04
 $\Delta = 7' 19' 19.9" (LT)$
 $D = 2' 02' 20.4"$
 $L = 359.11'$
 $T = 179.80'$
 $R = 2,810.00'$
 $SE = 04$
 $RO = 104'$

ALL DRIVE RADII ARE 10'
 UNLESS NOTED OTHERWISE

FOR -L- PROFILE SEE SHEET 7

iso-pjordan
 ct:\pwork\king\hmm\real-transit\or66165\vd0176843\840286_r.dwg_psh05.dgn
 9/30/25 AM 9:30:25 AM
 1/6/2025