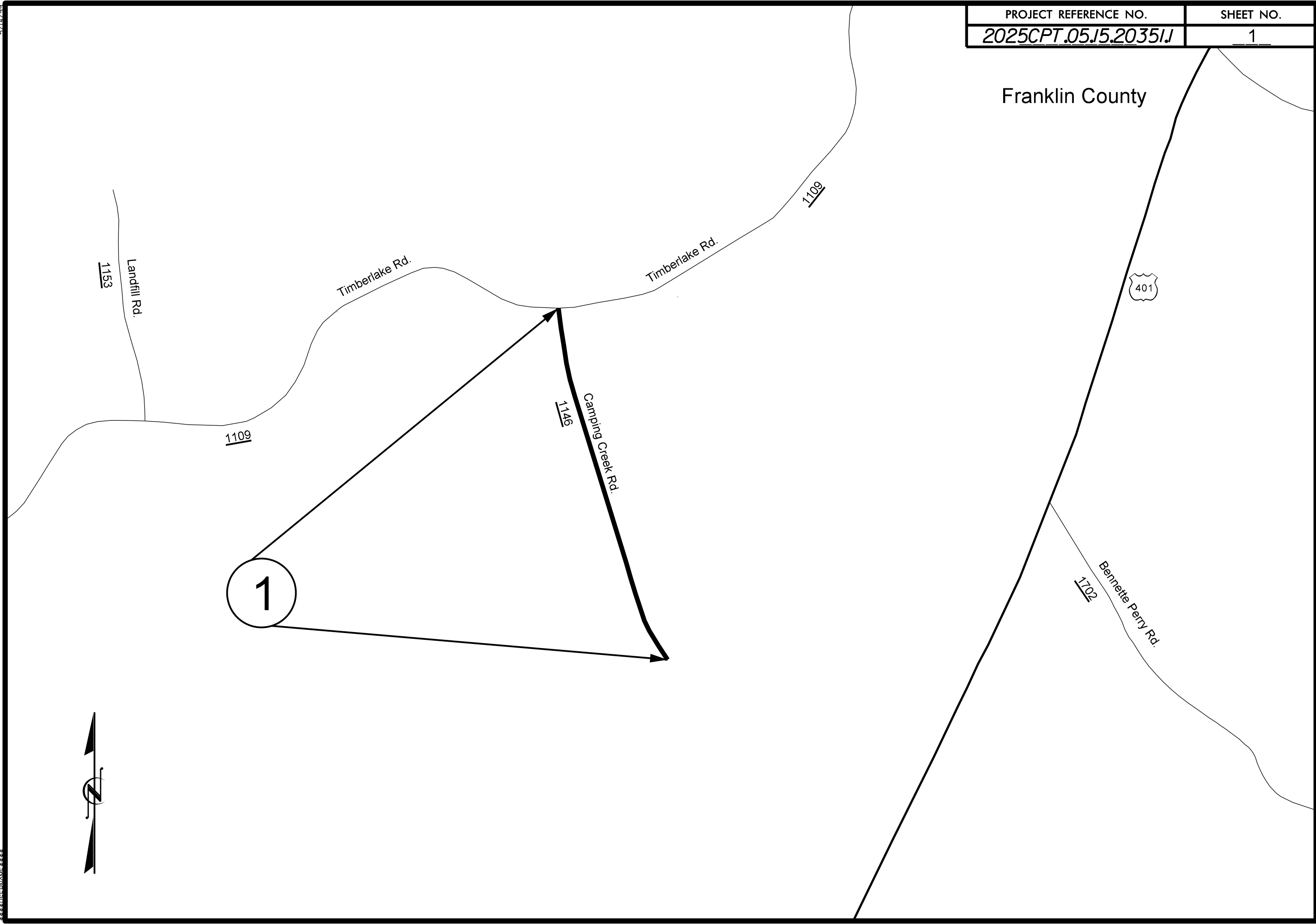


Franklin County



5/14/2025
C:\Users\jason\OneDrive\Documents\2025CPT.05.15.20351J\1149.dwg

Franklin County

T Kemp Rd. 1264

Gayline Dr. 1226

2

Chestnut St.

Grant St. 1228
Hayes St.

Dunston Cir.

1261

S. Main St.

1229

1229

S. Main St.

1229

Bunn Rd.

1230

Transportation

Bunn Rd.

1230

S Bickett Blvd.

S Bickett Blvd.

1762

56
39

CSX

401
S

S Bickett Blvd.

401
S

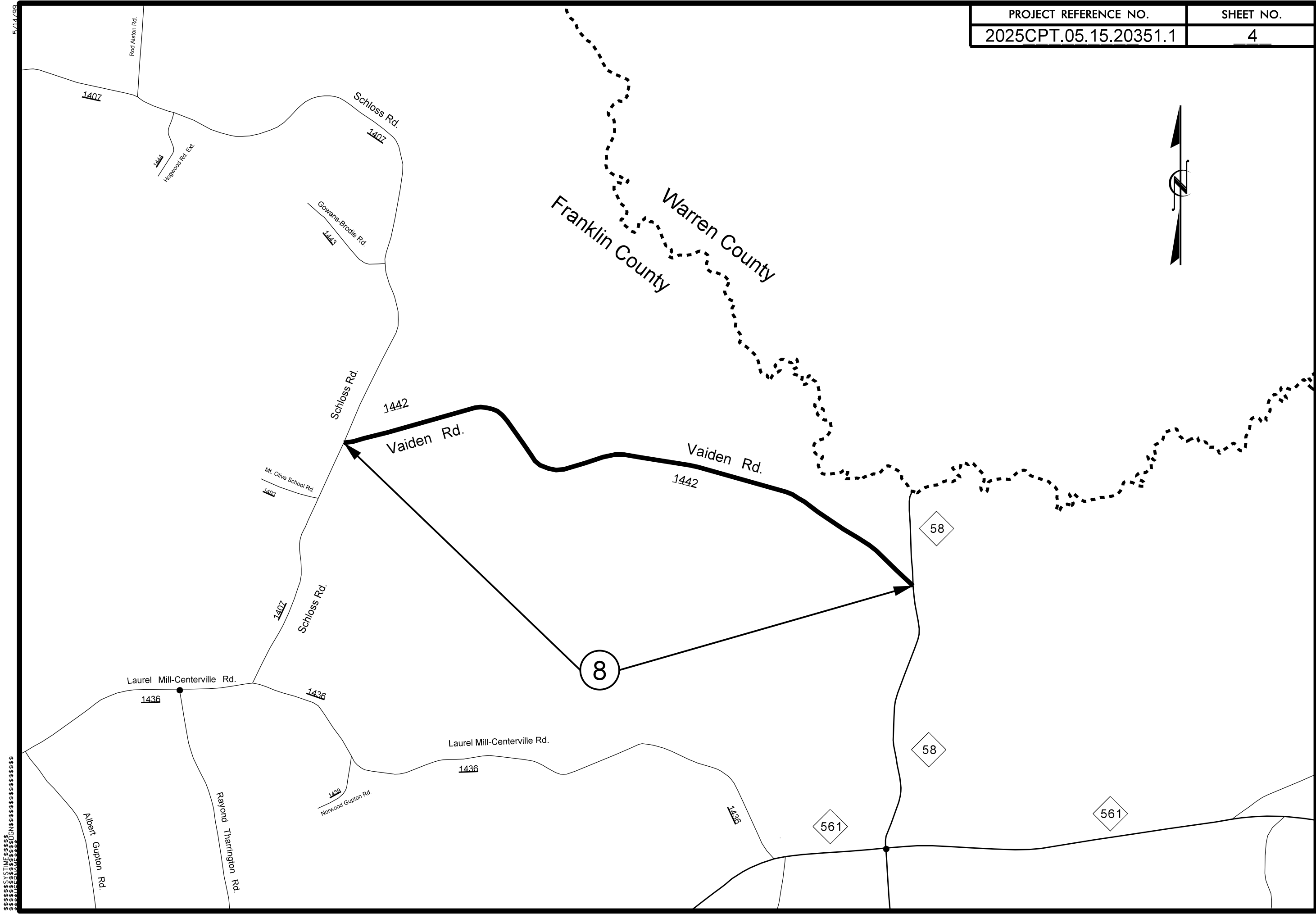
56

401

7

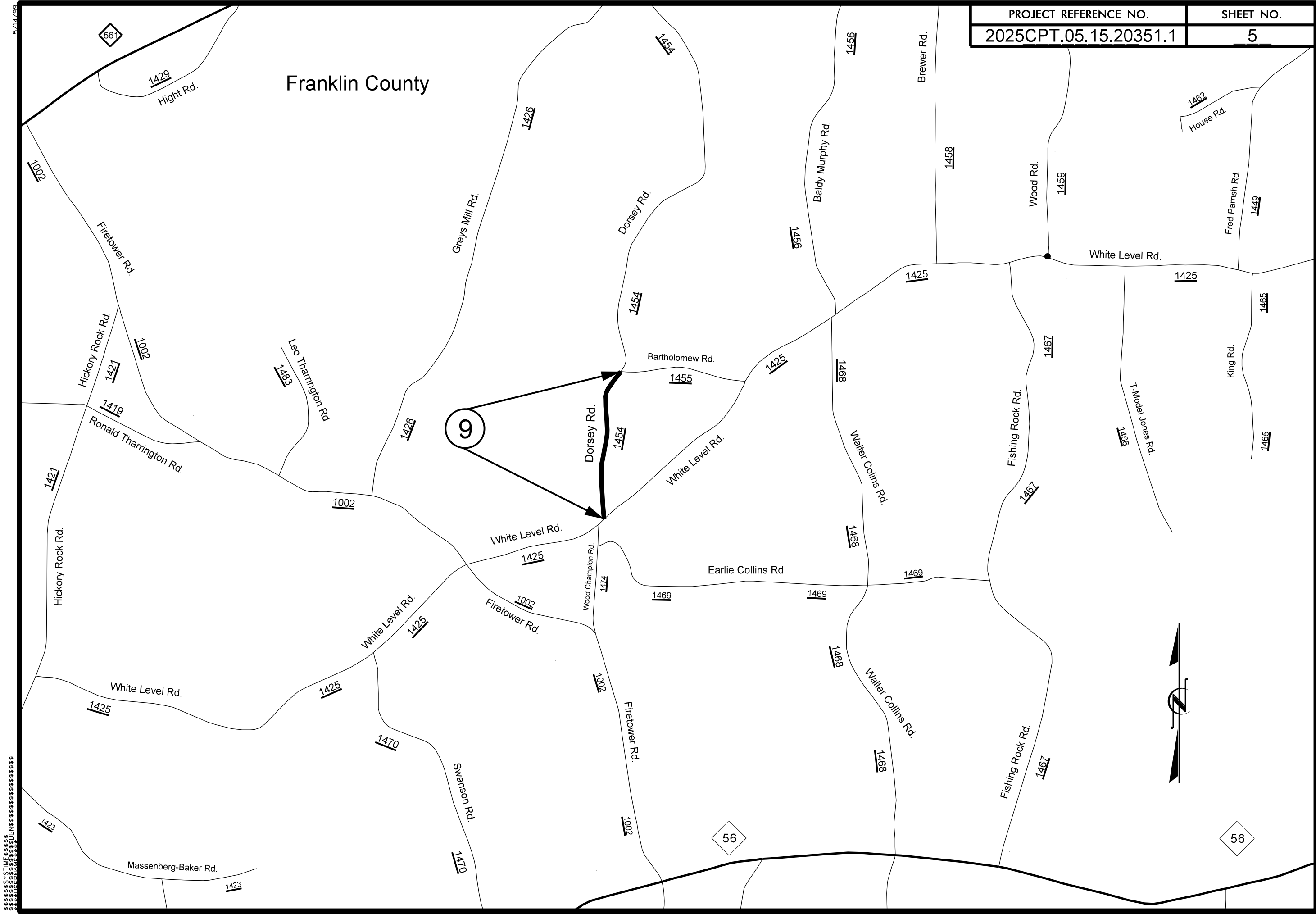


5/14/98
CUSTOMER: 2025CPT.05.15.20351.1



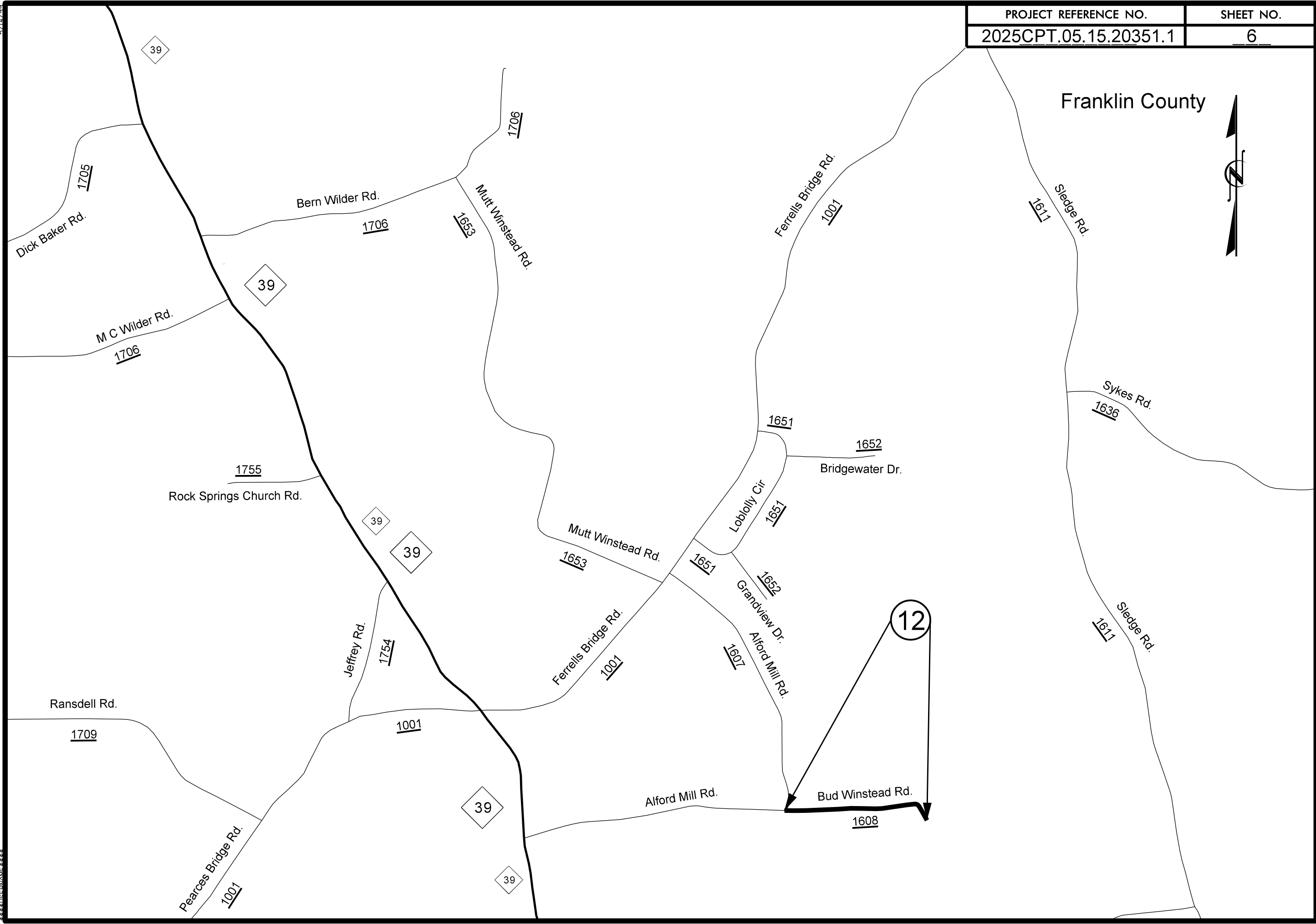
5/14/99
 C:\GIS\PROJECTS\2025CPT\2025CPT.05.15.20351.1\2025CPT.05.15.20351.1.dwg

Franklin County



CUSTOMER SERVICE
 1-800-345-3453
 WWW.STATE.GOV

Franklin County



5/14/99
CUSTOMER'S PROPERTY

PAVEMENT SCHEDULE

PROJECT REFERENCE NO.

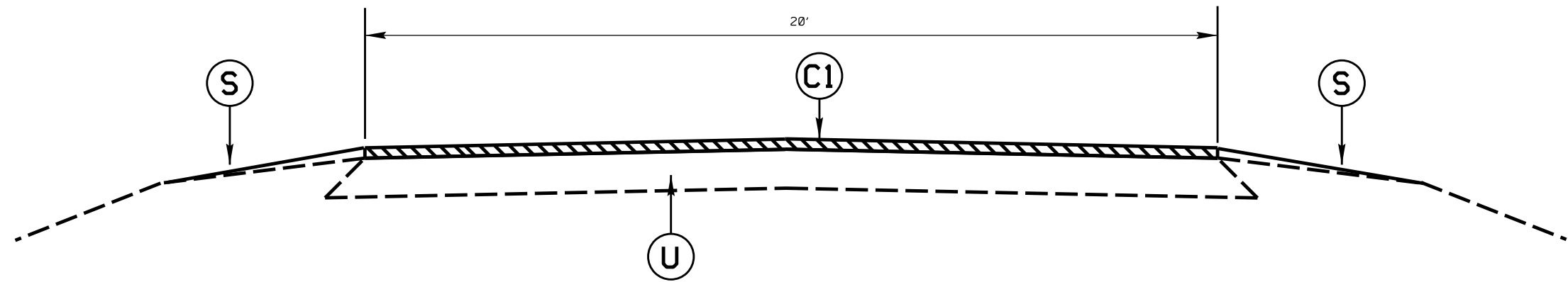
SHEET NO.

2025CPT.05.15.20351.1

8

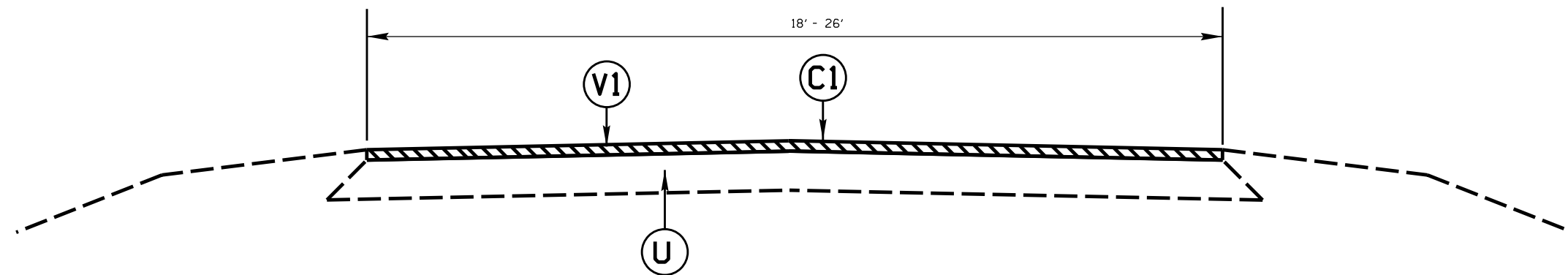
FRANKLIN COUNTY RESURFACING

C1	1 1/2" ASPHALT CONCRETE SURFACE COURSE, TYPE S9.5B AT AN AVERAGE RATE OF 165 LBS. PER SQ. YD.
C2	1 1/4" ASPHALT CONCRETE SURFACE COURSE, TYPE S9.5B AT AN AVERAGE RATE OF 137.5 LBS. PER SQ. YD.
S	SHOULDER RECONSTRUCTION, ASB REQUIRED
U	EXISTING PAVEMENT
V1	MILL ASPHALT PAVEMENT, 1 1/2" DEPTH



TYPICAL SECTION NO. 1

* MILL 1 1/2" +/- ON MAP 1, BRIDGE #151 AND ON MAP 13, BRIDGE #88 AS DIRECTED BY THE ENGINEER TO RESURFACE AND NOT ADD ANY ADDITIONAL WEIGHT ON THE BRIDGE. TO BE PAID FOR AS INCIDENTAL MILLING.

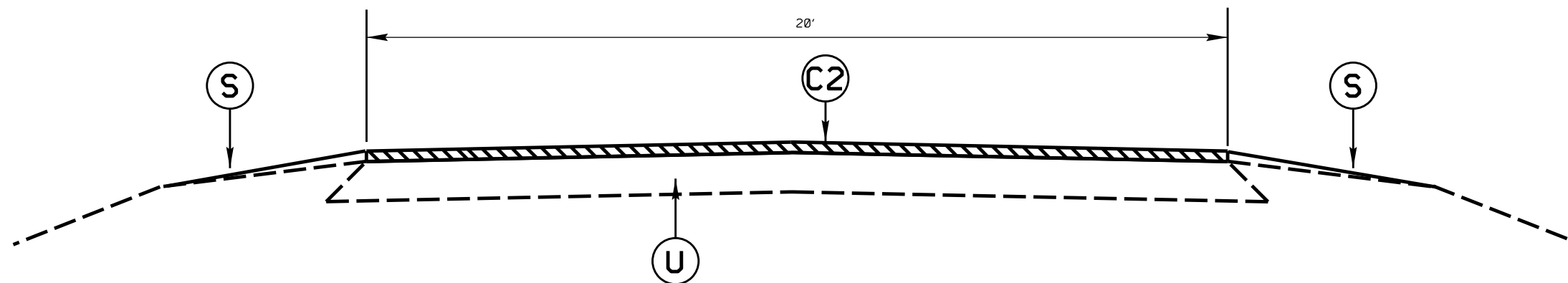


TYPICAL SECTION NO. 2

PAVEMENT SCHEDULE

FRANKLIN COUNTY RESURFACING

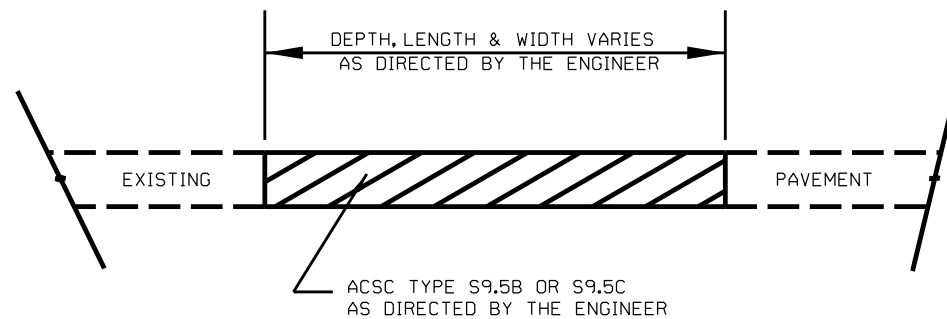
C1	1 1/2" ASPHALT CONCRETE SURFACE COURSE, TYPE S9.5B AT AN AVERAGE RATE OF 165 LBS. PER SQ. YD.
C2	1 1/4" ASPHALT CONCRETE SURFACE COURSE, TYPE S9.5B AT AN AVERAGE RATE OF 137.5 LBS. PER SQ. YD.
S	SHOULDER RECONSTRUCTION, ASB REQUIRED
U	EXISTING PAVEMENT
V1	MILL ASPHALT PAVEMENT, 1 1/2" DEPTH



TYPICAL SECTION NO. 3

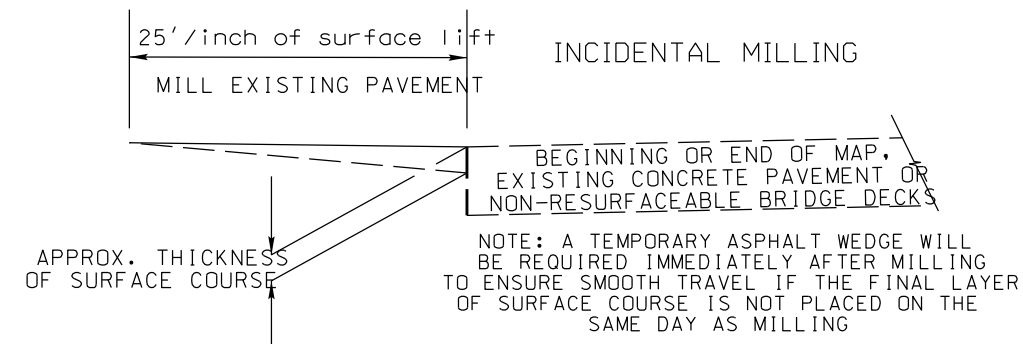
NOTES

ALL UNPAVED S.R. ROADS TO BE RESURFACED 50' FROM EDGE OF PAVEMENT OF MAIN PROJECT
 ALL PAVED S.R. ROADS TO BE RESURFACED TO THE ENDS OF THE RADII, OR AS DIRECTED BY THE ENGINEER.
 EDGES, PAVEMENT WIDENING, INTERSECTIONS AND BRIDGE FLARES ARE INCLUDED IN THE TABLE OF QUANTITIES.
 BRIDGES TO BE RESURFACED AT LOCATIONS AND TO DEPTH AS DIRECTED BY THE ENGINEER.



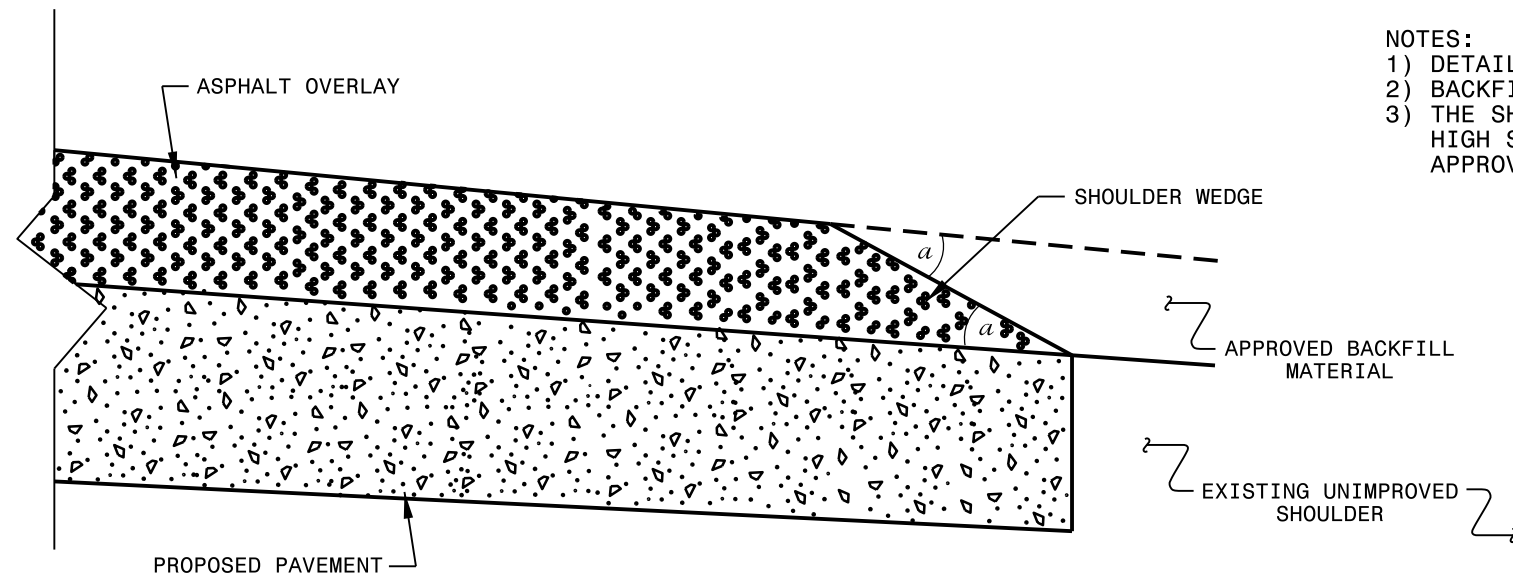
PATCHING EXISTING PAVEMENT

MILLING TO BE PERFORMED PRIOR TO PATCHING



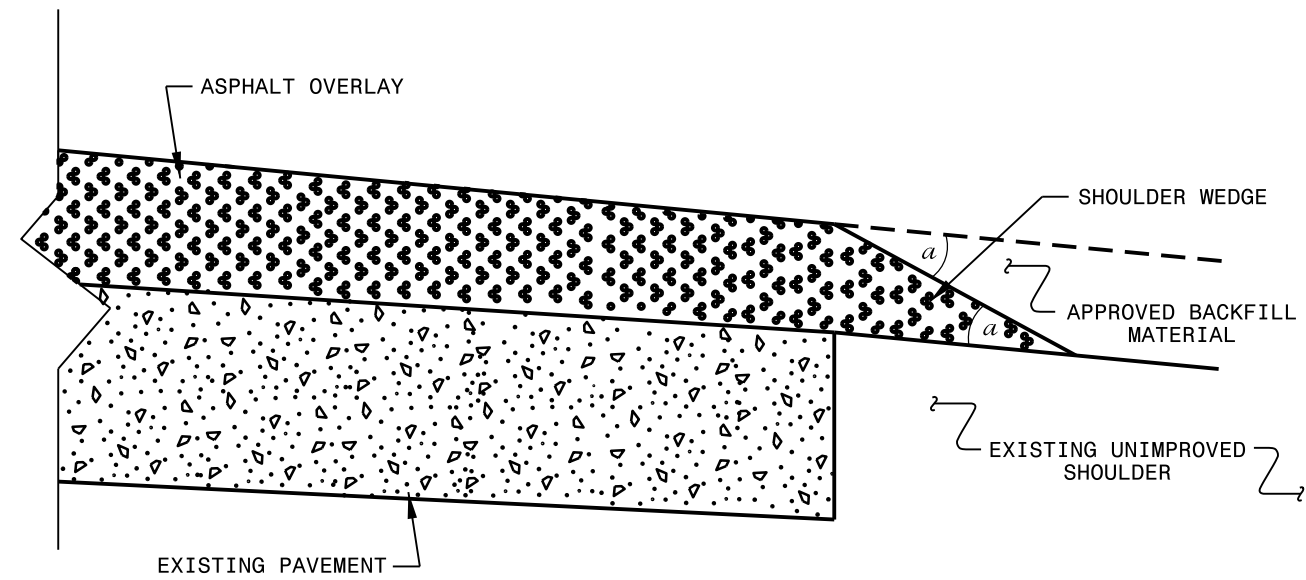
NOTES:

- 1) DETAIL DOES NOT APPLY TO OGAFB AND ULTRA-THIN BONDED WEARING COURSE.
- 2) BACKFILL SHOULDER WITH APPROVED MATERIAL.
- 3) THE SHOULDER WEDGE DEVICE MAY BE DISENGAGED AT PAVED DRIVEWAYS, SIDE STREETS, HIGH SHOULDERS, AND OTHER LOCATIONS NOT FEASIBLE TO CONSTRUCT AS APPROVED BY THE ENGINEER.



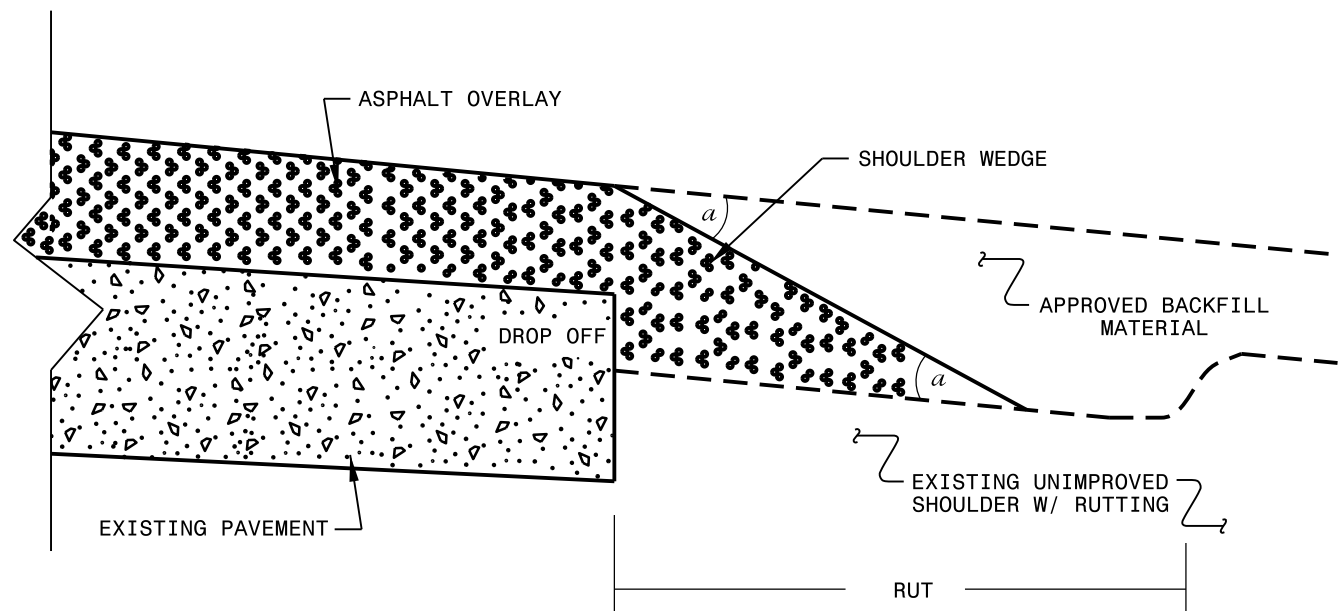
SHOULDER WEDGE DETAIL

(Resurfacing Projects w/ Widening or with Existing Paved Shoulder having no dropoffs)



SHOULDER WEDGE DETAIL

(Resurfacing Projects w/ NO Widening)



SHOULDER WEDGE DETAIL

(Resurfacing Adjacent to Rutted Shoulder)

- SHOULDER WEDGE ANGLE = 30°

CONTRACT STANDARDS AND DEVELOPMENT UNIT		
Office 919-707-6950 FAX 919-250-4119		
SHOULDER WEDGE DETAILS		
ORIGINAL BY: T.SPELL	DATE: 7-19-11	
MODIFIED BY:	DATE: 2/2/16	
CHECKED BY:	DATE:	
FILE SPEC.: szusr/details/stand/shoulderwedgedetail.dgn		

PROJECT NO.	SHEET NO.	TOTAL NO.
2025CPT.05.15.20351.1		12

SUMMARY OF QUANTITIES

PROJECT NO	COUNTY	MAP NO	ROUTE	DESCRIPTION	TYP NO	LANES	LANE TYPE	LENGTH	WIDTH	BEGIN	END	1220000000-E	1245000000-E	1260000000-E	1297000000-E	1330000000-E	1519000000-E	1575000000-E	1704000000-E	2830000000-N	2845000000-N
								MI	FT	MP	MP	TONS	SMI	TON	SY	SY	TONS	TON	TONS	EA	EA
2025CPT.05.15.20351.1	Franklin	1	SR-1146 / CAMPING CREEK RD	FROM SR 1109 TO CUL-DE-SAC	1	2		0.801	20	0	0.801	40	1.60	148		1,106	819	57	69		
2025CPT.05.15.20351.1	Franklin	2	SR-1228 / GRANT ST/HAYES ST	FROM SR 1229 TO SR 1229	2	2		0.48	18	0	0.48				5,099		466	31	7	4	
2025CPT.05.15.20351.1	Franklin	3	SR-1232 / HALIFAX RD	FROM US 401 TO NC 561	2	2		0.3	20	0	0.3				3,520		328	22	6		
2025CPT.05.15.20351.1	Franklin	4	SR-1256 / COTTRELL DR	FROM US 401 TO END MAINT	2	2		0.47	18	0	0.47				4,963		441	29	10		
2025CPT.05.15.20351.1	Franklin	5	SR-1257 / JEFFRESS DR	FROM SR 1256 TO SR 1258	2	2		0.24	18	0	0.24				2,534		232	16	10	1	
2025CPT.05.15.20351.1	Franklin	6	SR-1258 / JEFFRESS DR	FROM SR 1232 TO SR 1257	2	2		0.21	18	0	0.21				2,695		235	16	10		1
2025CPT.05.15.20351.1	Franklin	7	SR-1261 / DUNSTON CIR	FROM SR 1228 TO DEAD END	2	2		0.03	26	0	0.03				458		81	6	10	1	1
2025CPT.05.15.20351.1	Franklin	8	SR-1442 / VAIDEN RD	FROM SR 1407 TO NC 58	3	2		2.81	20	0	2.81	141	5.62	519		167	2,506	164	20		
2025CPT.05.15.20351.1	Franklin	9	SR-1454 / DORSEY RD	FROM SR 1455 TO SR 1425	1	2		0.67	20	2.11	2.78	34	1.34	124		407	706	46	10		
2025CPT.05.15.20351.1	Franklin	10	SR-1489 / STRATFORD DR	FROM SR 1256 TO SR 1490	2	2		0.3	18	0	0.3				3,168		288	19	10		
2025CPT.05.15.20351.1	Franklin	11	SR-1490 / GRIFFORD DR	FROM NC 561 TO SR 1489	2	2		0.34	18	0	0.34				3,590		338	24	33		2
2025CPT.05.15.20351.1	Franklin	12	SR-1608 / BUD WINSTEAD RD	FROM SR 1607 TO DEAD END	3	2		0.66	20	0	0.66	33	1.32	122		334	592	39	10		
2025CPT.05.15.20351.1	Franklin	13	SR-1720 / BRANTLEYTOWN RD/OLD HALIFAX RD	FROM NC 39 TO WAKE CO	1	2		5.971	19	0	5.971	299	11.94	1,103		2,902	6,027	400	167		
2025CPT.05.15.20351.1	Franklin	14	SR-1826 / PERRY LN	FROM SR 1103 TO DEAD END	1	2		0.3	20	0	0.3	15	0.60	55		333	360	24	10		
TOTAL FOR PROJ NO. 2025CPT.05.15.20351.1								13.582				562	22.42	2,071	26,027	5,249	13,419	893	382	6	4
GRAND TOTAL								13.582				562	22.42	2,071	26,027	5,249	13,419	893	382	6	4

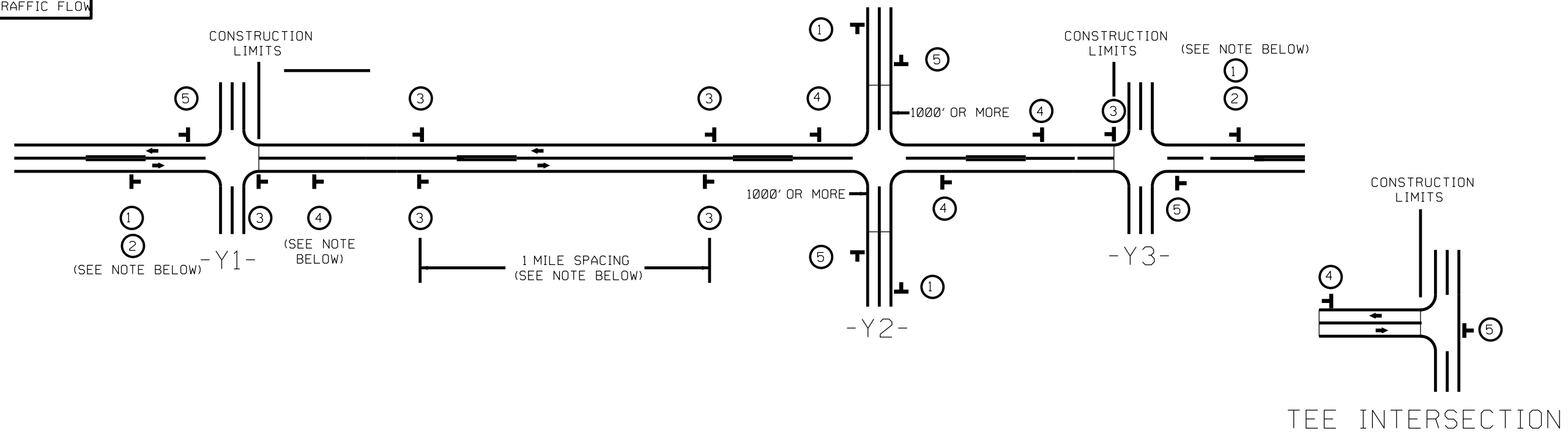
PROJECT NO.	SHEET NO.	TOTAL NO.
2025CPT.05.15.20351.1		13

THERMOPLASTIC AND PAINT QUANTITIES

PROJECT NO	COUNTY	MAP NO	ROUTE	DESCRIPTION	TYP NO	LANES	LANE TYPE	LENGTH		BEGIN MP	END MP	441300000-E	445700000-N	468500000-E		490000000-N	
								MI	FT			WORK ZONE ADVANCE/GENERAL WARNING SIGNING	TEMPORARY TRAFFIC CONTROL	4" X 90 M WHITE THERMO	4" X 90 M YELLOW THERMO	YELLOW & YELLOW MARKERS	
												SF	LS	LF	LF	EA	
2025CPT.05.15.20351.1	Franklin	1	SR-1146 / CAMPING CREEK RD	FROM SR 1109 TO CUL-DE-SAC	1	2		0.801	20	0	0.801	90			8,450	8,450	52
2025CPT.05.15.20351.1	Franklin	2	SR-1228 / GRANT ST/HAYES ST	FROM SR 1229 TO SR 1229	2	2		0.48	18	0	0.48	54					
2025CPT.05.15.20351.1	Franklin	3	SR-1232 / HALIFAX RD	FROM US 401 TO NC 561	2	2		0.3	20	0	0.3	34			3,170	3,170	
2025CPT.05.15.20351.1	Franklin	4	SR-1256 / COTTRELL DR	FROM US 401 TO END MAINT	2	2		0.47	18	0	0.47	53			4,962	4,962	
2025CPT.05.15.20351.1	Franklin	5	SR-1257 / JEFFRESS DR	FROM SR 1256 TO SR 1258	2	2		0.24	18	0	0.24	27			2,534	2,534	
2025CPT.05.15.20351.1	Franklin	6	SR-1258 / JEFFRESS DR	FROM SR 1232 TO SR 1257	2	2		0.21	18	0	0.21	24			2,216	2,216	
2025CPT.05.15.20351.1	Franklin	7	SR-1261 / DUNSTON CIR	FROM SR 1228 TO DEAD END	2	2		0.03	26	0	0.03	4		*			
2025CPT.05.15.20351.1	Franklin	8	SR-1442 / VAIDEN RD	FROM SR 1407 TO NC 58	3	2		2.81	20	0	2.81	315			29,672	29,672	
2025CPT.05.15.20351.1	Franklin	9	SR-1454 / DORSEY RD	FROM SR 1455 TO SR 1425	1	2		0.67	20	2.11	2.78	76			7,075	7,075	
2025CPT.05.15.20351.1	Franklin	10	SR-1489 / STRATFORD DR	FROM SR 1256 TO SR 1490	2	2		0.3	18	0	0.3	34					
2025CPT.05.15.20351.1	Franklin	11	SR-1490 / GRIFFORD DR	FROM NC 561 TO SR 1489	2	2		0.34	18	0	0.34	39					
2025CPT.05.15.20351.1	Franklin	12	SR-1608 / BUD WINSTEAD RD	FROM SR 1607 TO DEAD END	3	2		0.66	20	0	0.66	74			6,968	6,968	
2025CPT.05.15.20351.1	Franklin	13	SR-1720 / BRANTLEYTOWN RD/OLD HALIFAX RD	FROM NC 39 TO WAKE CO	1	2		5.971	19	0	5.971	669			63,052	63,052	
2025CPT.05.15.20351.1	Franklin	14	SR-1826 / PERRY LN	FROM SR 1103 TO DEAD END	1	2		0.3	20	0	0.3	34					
TOTAL FOR PROJ NO. 2025CPT.05.15.20351.1								13.582				1,527	*		128,099	128,099	52
256,198																	







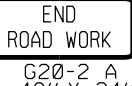
SIGNING FOR RESURFACING PROJECTS

LEGEND
 STATIONARY SIGN
 DIRECTION OF TRAFFIC FLOW



MAINLINE (-L-) SIGNING

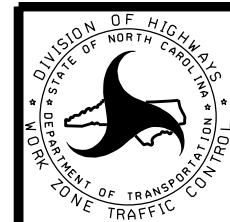
-Y- LINE SIGNING

SIGNING NOTES AND PLACEMENT PER DIRECTION	 	<p>PLACE 1000' PRIOR TO BEGINNING OF CONSTRUCTION LIMITS. ONLY USED ON -Y- LINES IF RESURFACING LIMITS EXTEND 1000' ALONG -Y- LINE.</p> <p>#2 SIGN ONLY USED WHEN CONSTRUCTION LIMITS ARE 2 OR MORE MILES IN LENGTH. (NO FRACTIONAL OR DECIMAL NUMBERS)</p>	<p>NO REQUIRED STATIONARY SIGNING FOR THE FOLLOWING -Y- LINE CONDITIONS:</p> <ol style="list-style-type: none"> 1) LESS THAN 1000' OF RESURFACING ALONG -Y- LINE 2) SUBDIVISION ROADS 3) DEAD END ROADS <p>WHEN PAVING/CONSTRUCTION ACTIVITIES PROCEED ACROSS AN UNSIGNED -Y- LINE, PORTABLE ADVANCE WARNING SIGNS SHALL BE USED ALONG THE -Y- LINE AS SHOWN BELOW. REMOVE UPON COMPLETION OF WORK.</p> <div style="display: flex; justify-content: space-around;"> <div style="text-align: center;">  <small>W20-1 48" X 48"</small> PLACED 500' IN ADVANCE OF FLAGGER. </div> <div style="text-align: center;">  <small>W20-7 A 48" X 48"</small> PLACED 250' IN ADVANCE OF FLAGGER. </div> </div>
		<p>- PLACE INITIALLY AT THE CONSTRUCTION LIMITS AND SPACE 1 MILE APART THEREAFTER.</p> <p>- AT TEE INTERSECTIONS INSTALL INITIALLY 1/2 MILE FROM INTERSECTION AND SPACE 1 MILE APART THEREAFTER.</p>	
		<p>- THESE ARE FOR -Y- LINES THAT ARE "THROUGH" ROADWAYS.</p> <p>- DEAD END AND SUBDIVISION ROADS ARE NOT "THROUGH" ROADWAYS.</p> <p>- INSTALL 500' +/- FROM EACH -Y- LINE APPROACH AS SHOWN ABOVE.</p> <p>- FOR MULTIPLE -Y- LINES THAT ARE SEPARATED BY 0.25 MILES OR LESS, TREAT AS A SINGLE UNIT AND INSTALL WITHIN 500' OF EACH APPROACH.</p> <p>- A MAXIMUM OF 2 SIGN SETS PER MILE. DO NOT INSTALL WHEN -Y- LINES ARE WITHIN 0.5 MILES FROM "END ROAD WORK" SIGN.</p> <p>- FOR TEE INTERSECTIONS, INSTALL WITHIN 500' +/- OF THE INTERSECTION ALONG -L- LINE.</p>	
		<p>PLACE 500' FOLLOWING THE END OF CONSTRUCTION LIMITS OR AS SHOWN WHEN WORK ENDS AT A 3-WAY TEE INTERSECTION.</p>	

THE ABOVE SIGNS ARE ALL THAT ARE REQUIRED FOR A CONTRACTOR TO BEGIN A RESURFACING CONTRACT. ANY ADDITIONAL SIGNS REQUESTED BY NCDOT DIVISIONS SHALL BE INSTALLED WITHIN 7 BUSINESS DAYS OF THE START OF CONTRACT WORK.

MAPS LESS THAN 2 MILES

FOR RESURFACING MAPS WITH CONSTRUCTION LIMITS LESS THAN 2 MILES IN LENGTH, NO STATIONARY SIGNS ARE REQUIRED. USE PORTABLE "ROAD UNDER CONSTRUCTION" OR "ROAD WORK AHEAD" SIGNS IN LIEU OF STATIONARY ADVANCE WARNINGS SIGNS.

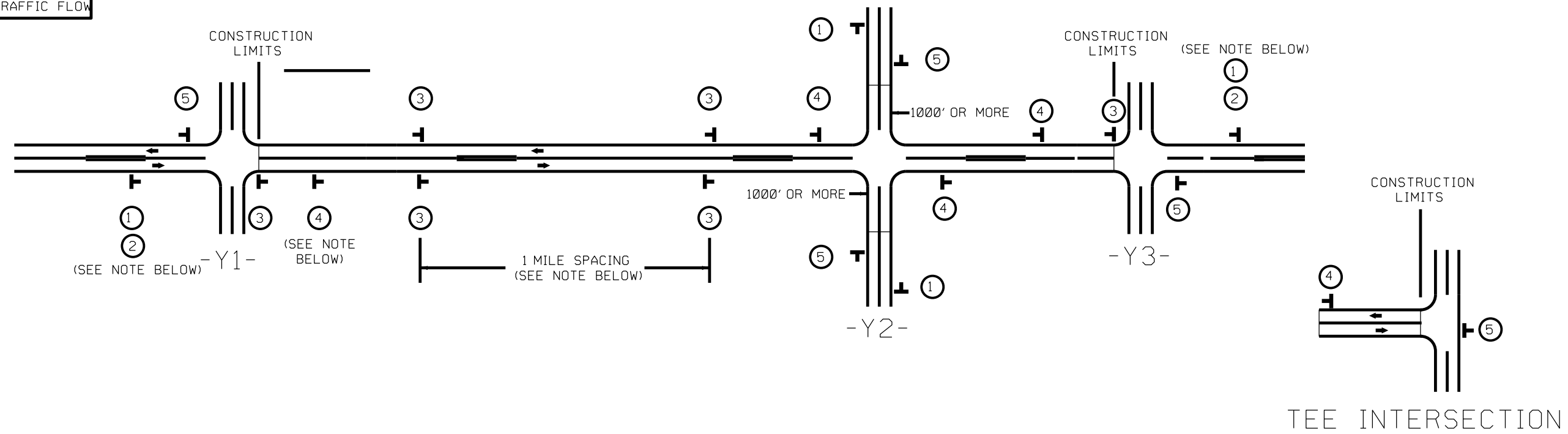


ADVANCE WARNING SIGNS FOR RURAL AND SUBURBAN 2-LANE ROADWAY RESURFACING

\$\$\$\$\$SYTIME\$\$\$\$\$
 \$\$\$SERIAL\$\$\$\$\$
 \$\$\$USERNAME\$\$\$\$\$







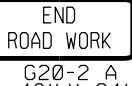
SIGNING FOR RESURFACING PROJECTS

LEGEND
 STATIONARY SIGN
 DIRECTION OF TRAFFIC FLOW



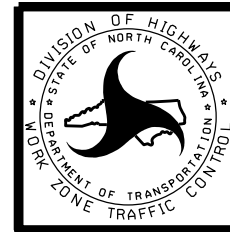
MAINLINE (-L-) SIGNING

-Y- LINE SIGNING

SIGNING NOTES AND PLACEMENT PER DIRECTION	 	<p>PLACE 1000' PRIOR TO BEGINNING OF CONSTRUCTION LIMITS. ONLY USED ON -Y- LINES IF RESURFACING LIMITS EXTEND 1000' ALONG -Y- LINE.</p> <p>#2 SIGN ONLY USED WHEN CONSTRUCTION LIMITS ARE 2 OR MORE MILES IN LENGTH. (NO FRACTIONAL OR DECIMAL NUMBERS)</p>	<p>NO REQUIRED STATIONARY SIGNING FOR THE FOLLOWING -Y- LINE CONDITIONS:</p> <ol style="list-style-type: none"> LESS THAN 1000' OF RESURFACING ALONG -Y- LINE SUBDIVISION ROADS DEAD END ROADS <p>WHEN PAVING/CONSTRUCTION ACTIVITIES PROCEED ACROSS AN UNSIGNED -Y- LINE, PORTABLE ADVANCE WARNING SIGNS SHALL BE USED ALONG THE -Y- LINE AS SHOWN BELOW. REMOVE UPON COMPLETION OF WORK.</p> <div style="display: flex; justify-content: space-around;"> <div style="text-align: center;">  W20-1 48" X 48" PLACED 500' IN ADVANCE OF FLAGGER. </div> <div style="text-align: center;">  W20-7 A 48" X 48" PLACED 250' IN ADVANCE OF FLAGGER. </div> </div>
		<p>- PLACE INITIALLY AT THE CONSTRUCTION LIMITS AND SPACE 1 MILE APART THEREAFTER.</p> <p>- AT TEE INTERSECTIONS INSTALL INITIALLY 1/2 MILE FROM INTERSECTION AND SPACE 1 MILE APART THEREAFTER.</p>	
		<p>- THESE ARE FOR -Y- LINES THAT ARE "THROUGH" ROADWAYS. DEAD END AND SUBDIVISION ROADS ARE NOT "THROUGH" ROADWAYS.</p> <p>- INSTALL 500' +/- FROM EACH -Y- LINE APPROACH AS SHOWN ABOVE.</p> <p>- FOR MULTIPLE -Y- LINES THAT ARE SEPARATED BY 0.25 MILES OR LESS, TREAT AS A SINGLE UNIT AND INSTALL WITHIN 500' OF EACH APPROACH.</p> <p>- A MAXIMUM OF 2 SIGN SETS PER MILE. DO NOT INSTALL WHEN -Y- LINES ARE WITHIN 0.5 MILES FROM "END ROAD WORK" SIGN.</p> <p>- FOR TEE INTERSECTIONS, INSTALL WITHIN 500' +/- OF THE INTERSECTION ALONG -L- LINE.</p>	
		<p>PLACE 500' FOLLOWING THE END OF CONSTRUCTION LIMITS OR AS SHOWN WHEN WORK ENDS AT A 3-WAY TEE INTERSECTION.</p>	
<p>THE ABOVE SIGNS ARE ALL THAT ARE REQUIRED FOR A CONTRACTOR TO BEGIN A RESURFACING CONTRACT. ANY ADDITIONAL SIGNS REQUESTED BY NCDOT DIVISIONS SHALL BE INSTALLED WITHIN 7 BUSINESS DAYS OF THE START OF CONTRACT WORK.</p>			

MAPS LESS THAN 2 MILES

FOR RESURFACING MAPS WITH CONSTRUCTION LIMITS LESS THAN 2 MILES IN LENGTH, NO STATIONARY SIGNS ARE REQUIRED. USE PORTABLE "ROAD UNDER CONSTRUCTION" OR "ROAD WORK AHEAD" SIGNS IN LIEU OF STATIONARY ADVANCE WARNINGS SIGNS.



ADVANCE WARNING SIGNS FOR RURAL AND SUBURBAN 2-LANE ROADWAY RESURFACING

\$\$\$\$\$SYTIME\$\$\$\$\$
\$\$\$\$\$DGN\$\$\$\$\$
\$\$\$\$\$SERNAME\$\$\$\$\$