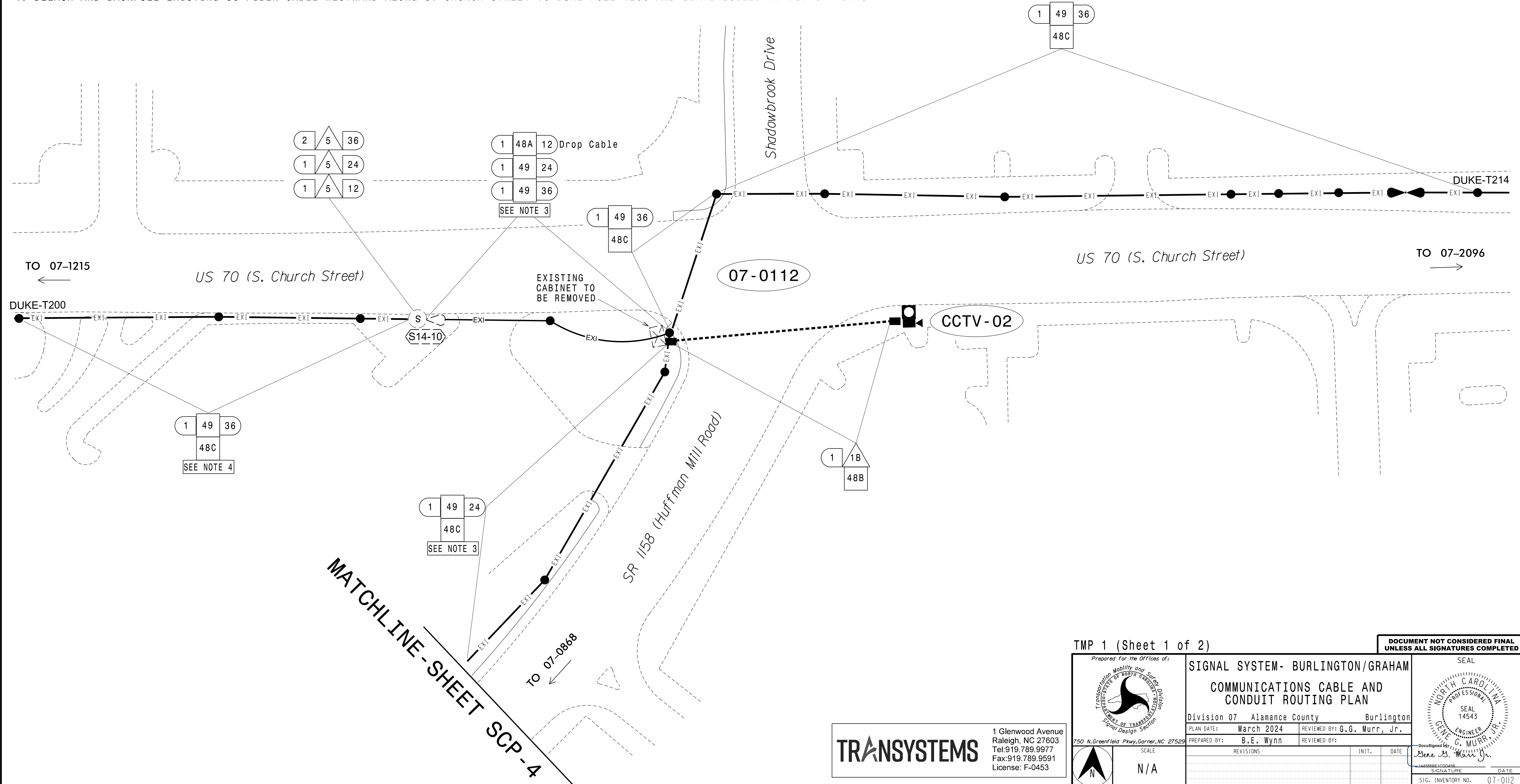


NOTES:

1. FIVE (5) DAYS PRIOR TO BEGINNING WORK ON THE SIGNAL SYSTEM, CONTACT THE BURLINGTON TRAFFIC SYSTEMS MANAGER AT (336) 570-6156 IN CASE IT BECOMES NECESSARY TO RE-PROGRAM THE EXISTING FIELD ETHERNET SWITCHES WITH THE NETWORK CONFIGURATION DATA, INCLUDING BUT NOT LIMITED TO: THE PROJECT IP ADDRESS, DEFAULT GATEWAY, SUBNET MASK AND VLAN ID INFORMATION. NOTIFY THE ENGINEER AFTER ALL WORK IS PERFORMED TO ENSURE THAT ALL FIBER CIRCUITS ARE FUNCTIONING PROPERLY. WORK IS NOT COMPLETE UNTIL THE SIGNAL SYSTEM IS BACK UP AND OPERATIONAL. THE SYSTEM MUST BE BACK UP AND OPERATIONAL IN 48 HOURS (SEE "ICT").
2. CONTRACTOR TO RECORD EXISTING SPLICE ARRANGEMENT FOR COMPARISON TO THE SUPPLIED SPLICE DETAILS. IF DISCREPANCIES EXIST, CONTACT THE ENGINEER TO DETERMINE HOW TO PROCEED WITH RESPLICING. PROVIDE AS-BUILT PLANS TO THE ENGINEER IF FINAL SPLICE ARRANGEMENT DIFFERS FROM THE SUPPLIED SPLICE DETAILS.
3. CUT EXISTING 36-, 24-, AND 12-FIBER CABLES AT EXISTING SPLICE ENCLOSURE S14-10. DELASH AND BACKPULL 24-FIBER CABLE EASTWARD ALONG S. CHURCH STREET AND SOUTHWARD DOWN HUFFMAN MILL ROAD TO DUKE POLE R268 (SEE SCP-4) AND LEAVE COILED AT THE TOP OF THE POLE. DELASH AND BACKPULL 36-FIBER CABLE EASTWARD ALONG S. CHURCH STREET. AND CONTINUE EASTWARD ALONG S. CHURCH STREET TO DUKE POLE T214 AND LEAVE COILED AT TOP OF POLE. AFTER 24- AND 36- FIBER CABLES HAVE BEEN BACKPULLED, REMOVE 12-FIBER CABLE AND MESSENGER CABLE AS SHOWN.
4. DELASH AND BACKPULL EXISTING 36-FIBER CABLE WESTWARD ALONG S. CHURCH STREET TO DUKE POLE T200 AND LEAVE COILED AT TOP OF POLE.



3/7/2024
 X:\2024\948E19-015-02-U-6011 US 70 Shadow Brook Dr\TPT\TrafficSignal\6011_SCP_2.dgn
 jbauman